

U.S. PUBLIC LAND SURVEY MONUMENT RECORD

For Public Land Survey Corners In:
T. 1 N. R. 14 E. 4th P.M.

WI ADMINISTRATIVE CODE A-E 7.08 REQUIREMENT
REV 10/23/2004 USMONREC.DWG

CORNER CODE INDEX

1	2	3	4	5	6	7	8	9	10	11	12	13	14	15	16	17	18	19	20	21	22	23	24	25	
A																									A
B	6																								B
C		5																							C
D			4																						D
E				3																					E
F					2																				F
G						1																			G
H	7																								H
I		8																							I
J			9																						J
K				10																					K
L					11																				L
M						12																			M
N							13																		N
O								14																	O
P									15																P
Q										16															Q
R											17														R
S												18													S
T													19												T
U														20											U
V															21										V
W																22									W
X																	23								X
Y																		24							Y
Z																			25						Z

CLINTON TWP
ROCK COUNTY WI
IF AVAILABLE
ROCK COUNTY COORDINATES PREFERRED

North 199699.39 Elev. _____
East 551779.45
Hor. Datum _____ Vert. Datum _____
LATITUDE _____ ELLIPS. HT. _____
LONGITUDE _____
NAD83(91) _____ NETWORK ADJ. YR _____
GPS (X) _____ TRAVERSE (X) _____
BASED ON THE FOLLOWING CONTROL:

PLACE MONUMENT SYMBOL \blacklozenge AT PROPER LOCATION ON ABOVE INDEX

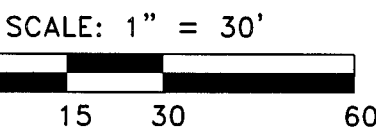
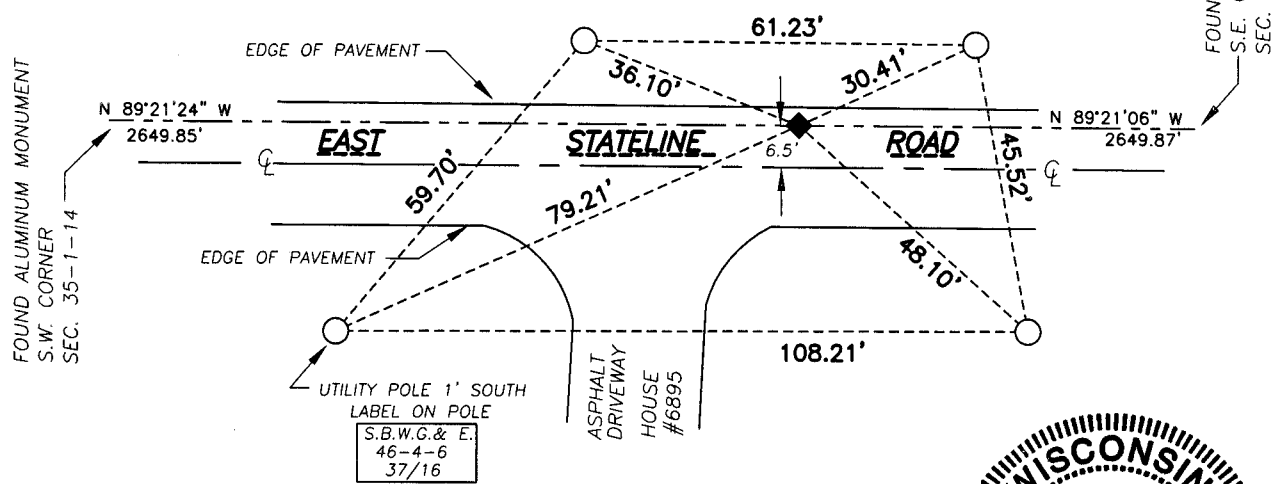
\blacklozenge CORNER MONUMENT \circ WITNESS MONUMENT

BEARINGS ARE BASED ON: ROCK COUNTY COORDINATE SYSTEM
(OCTOBER 2, 2008 ADJUSTMENT)



\circ IRON REBAR SET 5/8" x 36"(1.05 Lbs./Ft.)
 \blacklozenge COTTON PIN SET

NOTE:
A COTTON PIN WAS SET IN PLACE OF THE MASONRY NAIL THAT WAS FOUND IN THE ASPHALT ROAD. THE MASONRY NAIL WAS BADLY CORRODED AND WAS NOT STABLE IN THE BROKEN ASPHALT.



WISCONSIN
JEFFREY R. GARDE
S-2766
ORFORDVILLE
WI
LAND SURVEYOR
Jeffrey R. Garde
OCTOBER 8, 2008

I, Jeffrey R. Garde, hereby certify that the corner location as identified by the corner code index was determined by me under my direction and control and that this U.S. Public Land Survey Monument Record is correct and complete to the best of my knowledge and belief.

FIELD BOOK 527 PAGE # 40-42 SHEET 1 OF 1
SHOW A PLAN VIEW DRAWING DEPICTING THE CORNER MONUMENT AND SURROUNDING PHYSICAL FEATURES, INCLUDING THE EXCAVATION AREA AND DEPTH.
PLANNING & ZONING COMMITTEE ADOPTED THIS FORM ON 12/2/1982

CORNER CODE Z-19 (1)