

Paper weight-110# (minimum)

Black nonfading ink required

U.S. PUBLIC LAND SURVEY MONUMENT RECORD

For Public Land Survey Corners In:
T. 2N. R. 14E. 4th P.M.

WI ADMINISTRATIVE CODE A-E 7.08 REQUIREMENT
REV 10/23/2004 USMONREC.DWG

CORNER CODE INDEX

1	2	3	4	5	6	7	8	9	10	11	12	13	14	15	16	17	18	19	20	21	22	23	24	25	
A																									A
B	6																								B
C		5																							C
D			4																						D
E				3																					E
F					2																				F
G	7																								G
H		8																							H
I			9																						I
J				10																					J
K					11																				K
L	18																								L
M		17																							M
N			16																						N
O				15																					O
P					14																				P
Q	19																								Q
R		20																							R
S			21																						S
T				22																					T
U					23																				U
V						24																			V
W	30																								W
X		29																							X
Y			28																						Y
Z				27																					Z
					26																				
						25																			
							30																		
								31																	
									32																
										33															
											34														
												35													
													36												

1 2 3 4 5 6 7 8 9 10 11 12 13 14 15 16 17 18 19 20 21 22 23 24 25
PLACE MONUMENT SYMBOL AT PROPER LOCATION ON ABOVE INDEX

BRADFORD TWP
ROCK COUNTY WI

IF AVAILABLE
ROCK COUNTY COORDINATES PREFERRED

North _____ Elev. _____

East _____

Hor. Datum _____ Vert. Datum _____

LATITUDE _____ ELLIPS. HT. _____

LONGITUDE _____

NAD83(91) _____ NETWORK ADJ. YR _____

GPS (X) _____ TRAVERSE (X) _____

BASED ON THE FOLLOWING CONTROL:

CORNER MONUMENT WITNESS MONUMENT

BEARINGS ARE BASED ON: _____

FIELD BOOK _____ PAGE # _____

SHEET 1 OF 2

SHOW A PLAN VIEW DRAWING DEPICTING THE CORNER MONUMENT AND SURROUNDING PHYSICAL FEATURES, INCLUDING THE EXCAVATION AREA AND DEPTH.

PLANNING & ZONING COMMITTEE ADOPTED THIS FORM ON 12/2/1982

CORNER CODE E-17(3)

BR529 SECORSEC3

(B) Describe any record evidence, monument evidence, occupational evidence, testimonial evidence or any other material evidence you considered, and whether the monument was found or placed.

- 1871 RUGER VOL 2 PG 64 2651.42 TO E 1/4 COR SEC 3
1971 LEE VOL 4 PG 513 DUG & FD 15X10X5 HH. REFERENCED SAME.
1980 BARNES VOL 6 PG 31 S88-38-10E 2644.51 TO S 1/4 COR SEC 2, S1-28-04E 2643.30 TO E 1/4 COR SEC 10,
1980 BARNES VOL 6 PG 35 SET PK FROM LEE'S TIES
1980 WIDOT VOL 6 PG 45 STATE HWY DEPT. REVISED COORDINATES FOR CONTROL STATIONS. THE FOLLOWING ARE REVISED COORDINATES FOR SEC CORNERS. 240,524.27; 2,318,559.63
1980 WIDOT E-17 FD PK & 4 IP & ALL DIST. CHECKED. SET TIES (DISK)
1981 COMBS MAP #511 FD PK @ SE & S 1/4 CORNERS OF SEC 3. 985.66 WESTERLY ALONG SEC LINE FROM SE COR SEC 3 TO P.O.B.
1982 BARNES TWP PROJ. S87-50E 2644.4X TO S 1/4 COR SEC 2, S0-40E 2643.4X TO E 1/4 COR SEC 10, N0-06-26W 2653.60 TO E 1/4 COR SEC 3.
1982 BARNES E-17(1) SET POLY FROM TIES. FD RECORD TIES.
1990 WIDOT E-17(2) CALLS FOR ALUM. NAD83(91) 240,532.00; 2,287,022.25 CONVERT 258,602.16; 548,939.44
1994 WOOD VOL 6 PG 438 N0-53-55W 2653.69 TO W 1/4 COR SEC 2, S88-37-32E 2644.14 TO S 1/4 COR SEC 2. ANGLE 92-16-23 @ SW COR SEC 2 FROM W 1/4 COR SEC 2 TO S 1/4 SEC 2.
2000 COMBS CSM VOL 24 PG 237 FD ALUM @ S 1/4 & SE CORNERS OF SEC 3. 2644.83 TO S 1/4 COR SEC 3.
2001 LATHROP CSM VOL 25 PG 34 FD ALUM @ S 1/4 COR, SE COR, & E 1/4 COR OF SEC 3. 2644.83 TO S 1/4 COR SEC 3, 2653.69 TO E 1/4 COR SEC 3, & ANGLE 88-17-45 @ SE COR SEC 3 FROM S 1/4 COR SEC 3 TO E 1/4 COR SEC 3.
2002 COMBS MAP #14528 FD ALUM. S89-50-40E 2644.13 TO ALUM @ S 1/4 COR SEC 2, N2-06-50W 2653.70 TO W 1/4 COR SEC 2.

CONTACTED AFTER PVMT WAS MILLED. FD POLY. WITH TOP STILL INTACT. PLACED 2 MAGNETS ON TOP OF POLY, WHICH WAS PAVED OVER. INSTALLED STEEL SURVEY MONUMENT SPIKE AFTER FINAL MATT WAS INSTALLED. STEEL SURVEY SPIKE IS 3" LONG, 3/8" DIAMETER, & TOP IS 1" IN DIAMETER AND STAMPED "SURVEY MARKER". SUB-BASE MONUMENT IS STILL IN. 1.3' SOUTH OF CENTER OF PVMT & ON LINE WITH N/S PVMT.

C) Was the corner restored through acceptance of (1) an obliterated evidence location, or, (2) a found perpetuated location?

ACCEPTED FD POLY. MON.

D) Describe any material discrepancy between the location of the corner as restored or reestablished and the location of that corner as previously restored or reestablished by distance and direction. Show the discrepancy on the plan view drawing under (a), above. Show the distances between the corner as previously restored or reestablished and (1) the corner as restored or reestablished, and (2) to at least 4 of the witness monuments shown on the drawing in (a), above.

NONE

(E) Was the corner reestablished through lost corner proportionate methods? If so, show the method, including the directions and distances to other public land survey corners used as evidence or used for proportioning the corner location.

I, Donald Barnes, hereby certify that the corner location as identified by the corner code index was determined by me under my direction and control and that this U.S. Public Land Survey Monument Record is correct and complete to the best of my knowledge and belief.

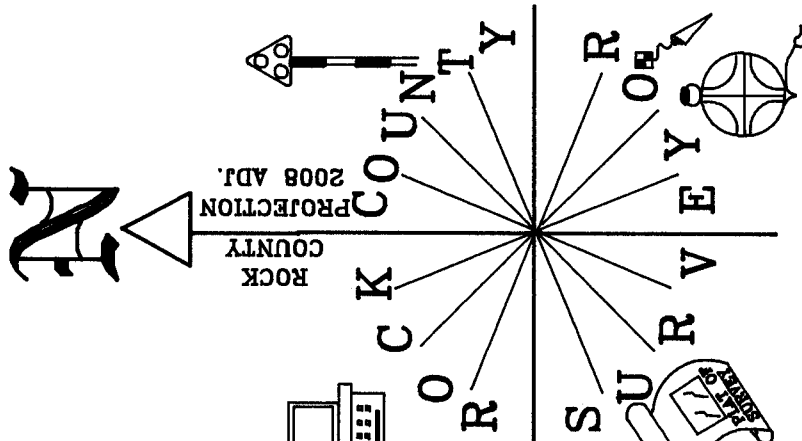

Donald Barnes
Emb933

9/22/08

SHEET 1 OF 2

CORNER CODE E-17(3)

A.E. 7.08 REQUIREMENT



SE COR
SEC 3
BRADFORD TWP
T2N R14E

VERTICAL DATUM BASED ON PHOTOS
WIDDOT-ALUM NAD83(91)
240,532.00; 2,287,022.25
CONVERT - 258,602.16; 548,939.44

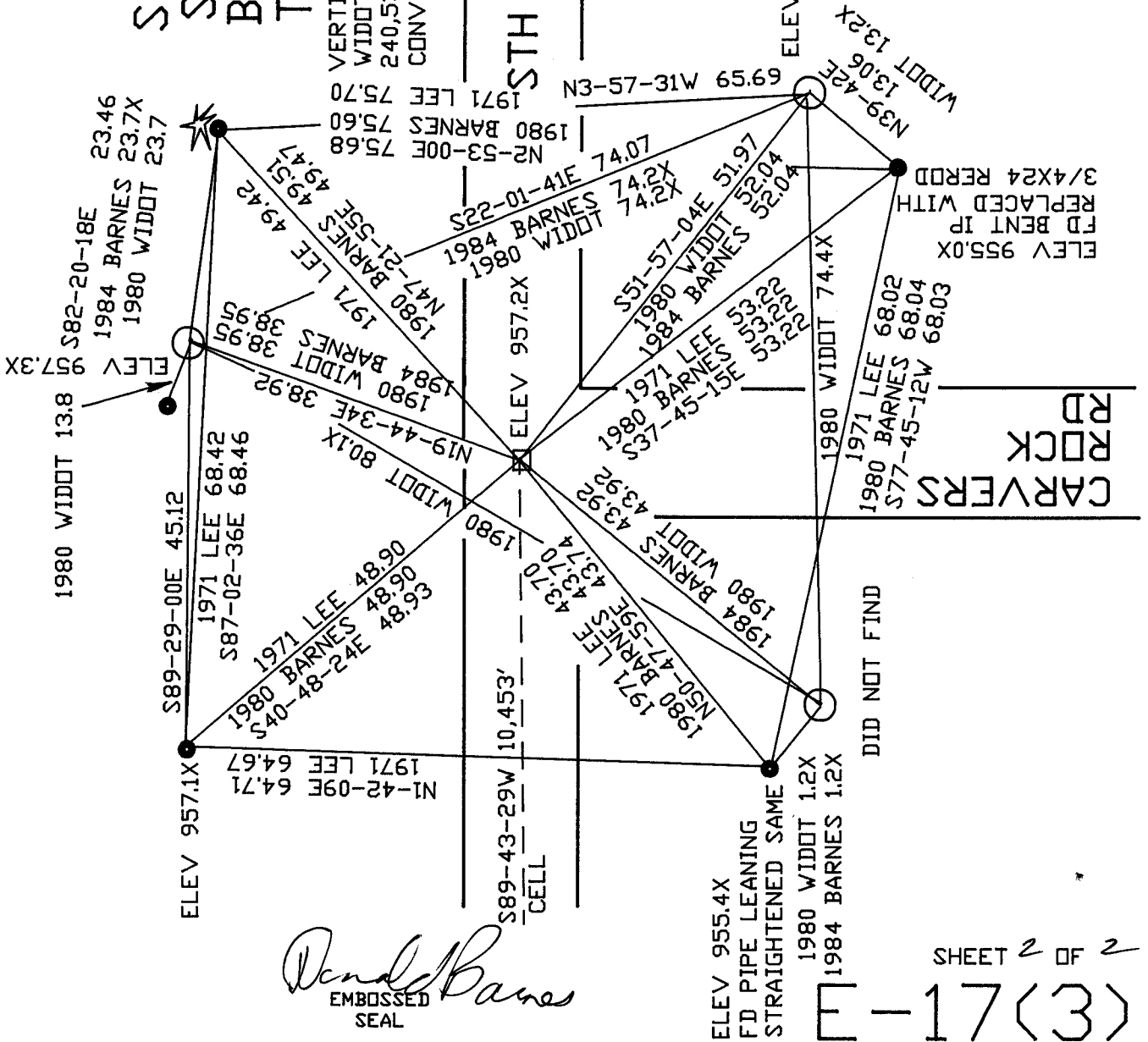
WIDDOT G-1 MON/DISK
FD PIPE

FD POLY, WITH
TOP INTACT. PLACED
2 MAGNETS ON TOP OF CAP
1' SOUTH CENTER OF NEW PVMT,
ON LINE N/S PVMT CENTER
REFERENCED AFTER MILLING &
INSTALLATION OF SUB.
PVMT MATT

NOT TO SCALE

FB #2 PG 21
OBSERVATION SHEET #529
1980 WIDDOT TIES FOR FD PK,
& FD 4 IP & DIST. CHECKED
TIES VOL 4 PG 513

SURVEY SPIKE IS 1.3'
SOUTH OF CENTER OF PVMT
TOP BROKE OFF



Dennis Barnes
EMBOSSED SEAL

9/22/08