

Paper weight-110# (minimum)

Black nonfading ink required

U.S. PUBLIC LAND SURVEY MONUMENT RECORD

For Public Land Survey Corners In:
T. 2N. R. 14E. 4th P.M.

WI ADMINISTRATIVE CODE A-E 7.08 REQUIREMENT
REV 10/23/2004 USMONREC.DWG

CORNER CODE INDEX

	1	2	3	4	5	6	7	8	9	10	11	12	13	14	15	16	17	18	19	20	21	22	23	24	25		
A																											A
B																											B
C																											C
D																											D
E																											E
F																											F
G																											G
H																											H
J																											J
K																											K
L																											L
M																											M
N																											N
O																											O
P																											P
Q																											Q
R																											R
S																											S
T																											T
U																											U
V																											V
W																											W
X																											X
Y																											Y
Z																											Z

BRADFORD TWP
ROCK COUNTY WI

IF AVAILABLE
ROCK COUNTY COORDINATES PREFERRED

North _____ Elev. _____

East _____

Hor. Datum _____ Vert. Datum _____

LATITUDE _____ ELLIPS. HT. _____

LONGITUDE _____

NAD83(91) _____ NETWORK ADJ. YR _____

GPS (X) _____ TRAVERSE (X) _____

BASED ON THE FOLLOWING CONTROL:

PLACE MONUMENT SYMBOL AT PROPER LOCATION ON ABOVE INDEX

CORNER MONUMENT

WITNESS MONUMENT

BEARINGS ARE BASED ON: _____

FIELD BOOK _____ PAGE # _____

SHEET 1 OF 2

SHOW A PLAN VIEW DRAWING DEPICTING THE CORNER MONUMENT AND SURROUNDING PHYSICAL FEATURES, INCLUDING THE EXCAVATION AREA AND DEPTH.

PLANNING & ZONING COMMITTEE ADOPTED THIS FORM ON 12/2/1982

CORNER CODE E-19(3)

BR530 S1/4CORSEC2

(B) Describe any record evidence, monument evidence, occupational evidence, testimonial evidence or any other material evidence you considered, and whether the monument was found or placed.

- 1894 BROWN VOL 2 PG 502 2642.86 TO CEN SEC 2, 5296.77 TO N 1/4 COR SEC 2.
- 1980 WIDOT VOL 6 PG 45 STATE HWY DEPT. REVISED COORDINATES FOR CONTROL STATIONS. THE FOLLOWING ARE REVISED COORDINATES FOR SEC CORNERS. 240,460.66; 2,321,203.29
- 1980 BARNES VOL 6 PG 31 SET 1' IRON PIPE, N88-38-10W 2644.51 TO SW COR SEC 2 & S88-38-10E 2644.50
- 1980 BARNES VOL 6 PG 37. DUG 2.5 DEEP & FOUND OLD GRAVEL ROAD BED. DUG 2" DEEPER & FD NOTHING. SET 1" IRON PIPE ON LINE WITH SE & SW COR SEC 2 AT SINGLE PROPORTIONATE DISTANCE. 1" IRON PIPE IS NORTH OF 2+/- CALLS FOR HOLE AS SOUTH END IS ON LINE WITH E/W CENTER OF PVMT, NORTH END OF HOLE IS 4.5 NORTH OF CENTER OF PVMT, EAST EDGE OF HOLE IS 2" EAST OF CENTER OF PVMT., WEST EDGE OF HOLE IS 2 FROM CENTER OF HOLE.
- 1980 WOOD VOL 6 PG 438 N88-37-32W 2644.14 TO SW COR SEC 2, S88-37-08E 2644.43 TO SE COR SEC 2, NO-53-37W 2648.02 TO CENTER OF SEC 2, & NO-53-37W 5324.89 TO N 1/4 COR SEC 2
- 1981 WIDOT E-19 FD PK & SET TIES.
- 1982 BARNES E-19 SET POLY FROM TIES. FB #2 PG 22
- 1982 BARNES TWP PROJ. S87-50E 2644.5X TO SE COR SEC 2, NB7-50W 2644.4 TO SW COR SEC 2, NO-07W 5325.0 TO N 1/4 COR SEC 2.
- 1994 WOOD VOL 6 PG 438 NO-53-55W 2653.69 TO W 1/4 COR SEC 2, N88-37-32W 2644.14 TO SW COR SEC 2. ANGLE 92-16-23 @ SW COR SEC 2 FROM W 1/4 COR SEC 2 TO S 1/4 SEC 2.
- 1994 WIDOT E-19(2) CALLS FOR ALUM. NAD83(91) 240,468.58; 2,289,665.63
- 2002 COMBS MAP #14582 FD ALUM MON, NB9-50-40W 2644.13 TO ALUM @ SW COR SEC 2, & ANGLE 92-16-00 @ SW COR SEC 2 FROM ALUM @ W 1/4 COR SEC 2 TO S 1/4 COR SEC 2.
- 2007 LATHROP #15898 CALLS FOR PK. S00-50-10E 2645.48 TO CENTER OF SEC 11 & S0-50E 5291.65 TO S 1/4 COR SEC 11.

CONTACTED AFTER PVMT WAS MILLED. FD POLY WITH TOP MILLED OFF. PLACED 2 MAGNETS ON TOP OF POLY, WHICH WAS PAVED OVER. INSTALLED STEEL SURVEY MONUMENT SPIKE AFTER FINAL MATT WAS INSTALLED. STEEL SURVEY SPIKE IS 3" LONG, 3/8" DIAMETER, & TOP IS 1" IN DIAMETER AND STAMPED "SURVEY MARKER". SUB-BASE MONUMENT IS STILL IN. SPIKE IS 2.1' NORTH OF CENTER OF PVMT & ON LINE WITH N/S PVMT.

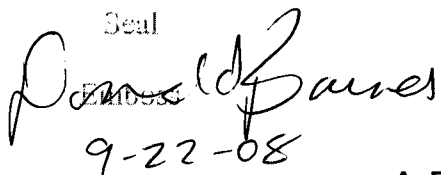
c) Was the corner restored through acceptance of (1) an obliterated evidence location, or, (2) a found perpetuated location?

ACCEPTED FOUND PERPETUATED LOCATION OF POLY.

D) Describe any material discrepancy between the location of the corner as restored or reestablished and the location of that corner as previously restored or reestablished by distance and direction. Show the discrepancy on the plan view drawing under (a), above. Show the distances between the corner as previously restored or reestablished and (1) the corner as restored or reestablished, and (2) to at least 4 of the witness monuments shown on the drawing in (a), above.

NONE

I, **Donald Barnes**, hereby certify that the corner location as identified by the corner code index was determined by me under my direction and control and that this U.S. Public Land Survey Monument Record is correct and complete to the best of my knowledge and belief.

Seal

9-22-08

SHEET 1 OF 2

CORNER CODE E-19(3)

A.E. 7.08 REQUIREMENT

SCHARINE RD

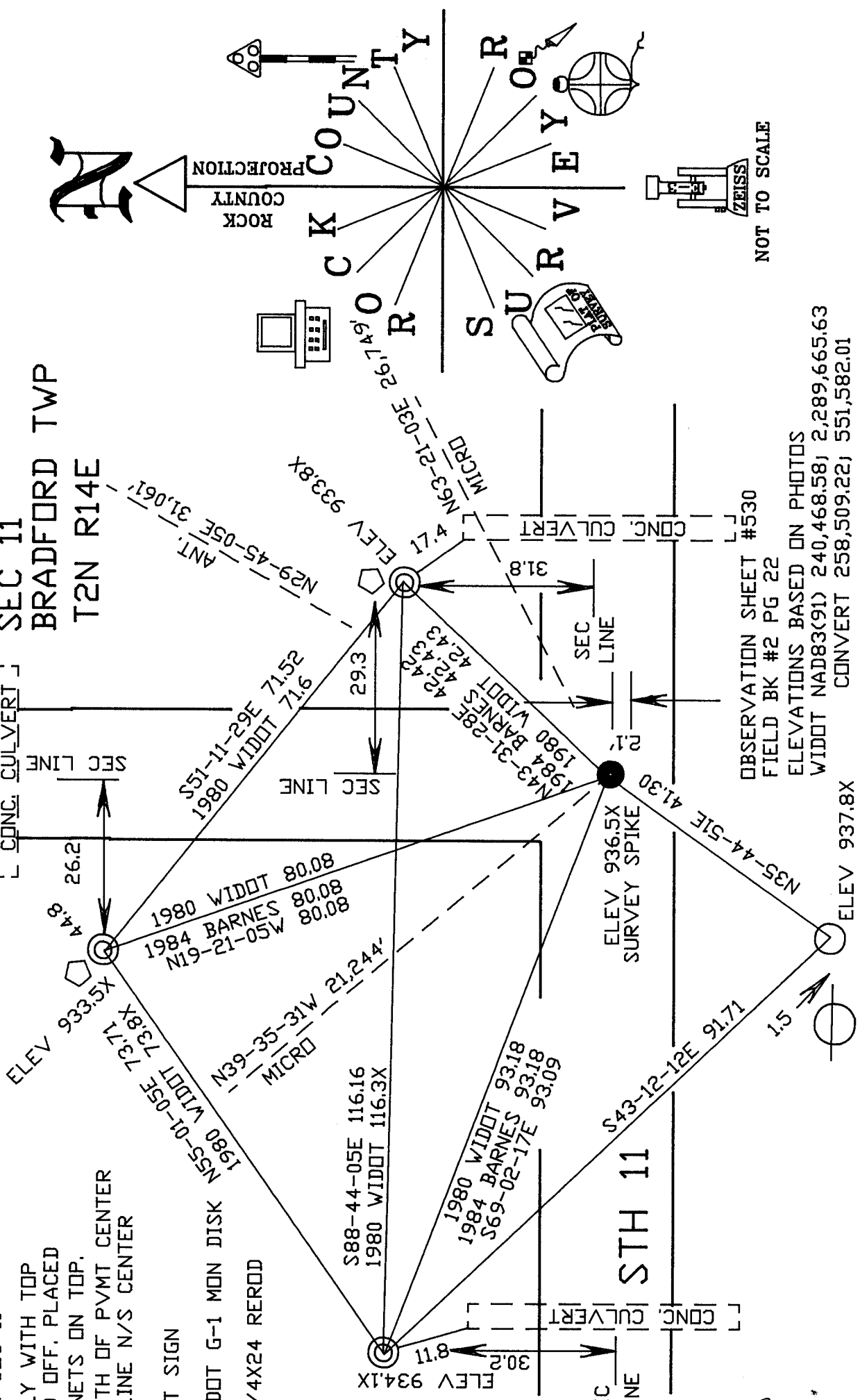
N 1/4 COR
SEC 11
BRADFORD TWP
T2N R14E

S87-58-54E 2644.56 TO POLY @ NE COR SEC 11

FD POLY WITH TOP MILLED OFF, PLACED 2 MAGNETS ON TOP. 2' NORTH OF PVMT CENTER & ON LINE N/S CENTER

- FD DOT SIGN
- FD WIDDT G-1 MON DISK
- SET 3/4X24 REROD

Donald Barnes
EMBOSSSED SEAL
9-22-08



OBSERVATION SHEET #530
FIELD BK #2 PG 22

ELEVATIONS BASED ON PHOTOS
WIDDT NAD83(91) 240,468.58J 2,289,665.63
CONVERT 258,509.22J 551,582.01

SHEET 2 OF 2
-19(3)