

Paper weight-110# (minimum)

Black nonfading ink required

U.S. PUBLIC LAND SURVEY MONUMENT RECORD

For Public Land Survey Corners In:

WI ADMINISTRATIVE CODE A-E 7.08 REQUIREMENT

T. 2 N. R. 14 E. 4th P.M.

REV 10/23/2004

USMONREC.DWG

CORNER CODE INDEX

BRADFORD TWP
ROCK COUNTY WI

IF AVAILABLE
ROCK COUNTY COORDINATES PREFERRED

A	1	2	3	4	5	6	7	8	9	10	11	12	13	14	15	16	17	18	19	20	21	22	23	24	25	A
B																										B
C																										C
D																										D
E																										E
F																										F
G																										G
H																										H
I																										I
J																										J
K																										K
L																										L
M																										M
N																										N
O																										O
P																										P
Q																										Q
R																										R
S																										S
T																										T
U																										U
V																										V
W																										W
X																										X
Y																										Y
Z																										Z

North _____ Elev. _____

East _____

Hor. Datum _____ Vert. Datum _____

LATITUDE _____ ELLIPS. HT. _____

LONGITUDE _____

NAD83(91) _____ NETWORK ADJ. YR _____

GPS (X) _____ TRAVERSE (X) _____

BASED ON THE FOLLOWING CONTROL:

PLACE MONUMENT SYMBOL AT PROPER LOCATION ON ABOVE INDEX

CORNER MONUMENT

WITNESS MONUMENT

(a)

BEARINGS ARE BASED ON: _____

FIELD BOOK _____ PAGE # _____

SHEET 1 OF 3

SHOW A PLAN VIEW DRAWING DEPICTING THE CORNER MONUMENT AND SURROUNDING PHYSICAL FEATURES, INCLUDING THE EXCAVATION AREA AND DEPTH.

PLANNING & ZONING COMMITTEE ADOPTED THIS FORM ON 12/2/1982

CORNER CODE E-7(8)

BR524 S1/4CORSEC5

(B) Describe any record evidence, monument evidence, occupational evidence, testimonial evidence or any other material evidence you considered, and whether the monument was found or placed.

- 1920 BATTERMAN VOL 3 PG 99 & #13210 IRON ROD. 2651.15 TO SW & SE CORNERS OF SEC 5
- 1980 WIDOT E-7 SET REFERENCE MONUMENTS.
- 1982 BARNES VOL 6 PG 254 SET POLYSTYRENE MONUMENT AT MID POINT & ON LINE WITH NE & NW CORNERS OF SEC 8. FD OLD PATCH @ THE PROJECTION OF THE NE COR & THE 1/16TH COR. DUG 2X3X3.5 HOLE @ POINT BY PROJECTING LINE AND DISTANCE BETWEEN THE NE COR AND THE N 1/16 OF THE NE 1/4 OF SEC 8 TO THE WEST & FD NOTHING BUT @ 3.5' FD BEDROCK. DUG 3X3X3 HOLE AT MID-POINT AND ON LINE WITH THE NE & NW CORNERS OF SEC 8 & FD NOTHING. CALLS FOR S88-36-58E 2650.85 TO NE COR SEC 8, N88-36 58W 2650.85 TO NW COR SEC 8, & N 1/16TH COR OF NE 1/4 OF SEC 8 IS 3.6 SOUTH OF LINE BETWEEN THE NE & NW CORNERS OF SEC 8
- 1984 WIDOT E-7(1) BARNES FD & MEASURED TO WIDOT REFERENCE MONUMENTS. FD BROKEN PVC MON. SET 12" CI ON TOP.
- 1985 COMBS MAP# 13210 FD CI MON 4.1' NORTH OF CENTER OF PVMT. SET PIPE 37.12 ON LINE BETWEEN N 1/4 COR SEC 8 & S 1/4 COR SEC 8. SET PIPE N89-25-01W 64.07 FROM AFORESAID PIPE.
- 1994 WIDOT E-9(2) BARNES NOTE: WIDOT PROVIDED THE NAD83(91) STATE PLANE COORDINATES AND DESCRIBED THE MONUMENT THEY FOUND (STEEL IRON MON). THEY ESTABLISHED THE COORDINATES BY TRAVERSING FROM GPS STATIONS THAT THEY ESTABLISHED PRIOR TO THE ROCK COUNTY GPS NETWORK. I TRANSCRIBED THEIR INFORMATION TO THIS SHEET. I ALSO CONVERTED THEIR STATE PLANE COORDINATES TO THE LATITUDE/LONGITUDE AND ROCK COUNTY COORDINATES THAT ARE SHOW. NAD83(91) 240,612.55'; 2,273,776.13'. CONVERT- 258,830.60'; 535,694.77'
- 1994 COMBS GSM VOL 17 PG 199 FD CI. S1-28-50E 5294.06 TO CONC. MON @ S 1/4 COR SEC 8, S1-28-50E 37.12 TO IRON PIPE ON SEC LINE, N89-23-30W 62.73 ON SEC LINE & THENCE S0-34-59W 37.13 TO IRON PIPE. ANGLE 92-05-20 @ N1/4 COR SEC 8 FROM S 1/4 COR SEC 8 TO NW COR SEC 8.
- 1994 COMBS #9856 FD CI. MON. SAID POINT 62.73 BETWEEN N 1/4 COR & NW COR SEC 8. SET PIPE SOUTHERLY 37.13 FROM AFORESAID PIPE.

PVMT SURFACE WAS MILLED. I WAS CONTACTED AFTER THE BASE MATT WAS INSTALLED. UNCOVERED FOUND CI. & REFERENCED SAME. PLACED 2 MAGNETS ON TOP OF CI, WHICH WERE COVERED BY FINAL MATT. INSTALLED @ SURFACE A STEEL SURVEY MONUMENT SPIKE AFTER FINAL MATT WAS INSTALLED. STEEL SURVEY SPIKE IS 3" LONG, 3/8" DIAMETER, & TOP IS 1" IN DIAMETER AND STAMPED "SURVEY MARKER". SUB-BASE MONUMENT IS STILL IN.

Donald Barnes
9/22/08

SHEET 1 OF 3
CORNER CODE E-7(3)

BR524

C) Was the corner restored through acceptance of (1) an obliterated evidence location, or, (2) a found perpetuated location?

ACCEPTED PERPETUATED LOCATION

D) Describe any material discrepancy between the location of the corner as restored or reestablished and the location of that corner as previously restored or reestablished by distance and direction. Show the discrepancy on the plan view drawing under (a), above. Show the distances between the corner as previously restored or reestablished and (1) the corner as restored or reestablished, and (2) to at least 4 of the witness monuments shown on the drawing in (a), above.

NONE

(E) Was the corner reestablished through lost corner proportionate methods? If so, show the method, including the directions and distances to other public land survey corners used as evidence or used for proportioning the corner location.

NO

I, **Donald Barnes**, hereby certify that the corner location as identified by the corner code index was determined by me under my direction and control and that this U.S. Public Land Survey Monument Record is correct and complete to the best of my knowledge and belief.

Donald Barnes

Seal

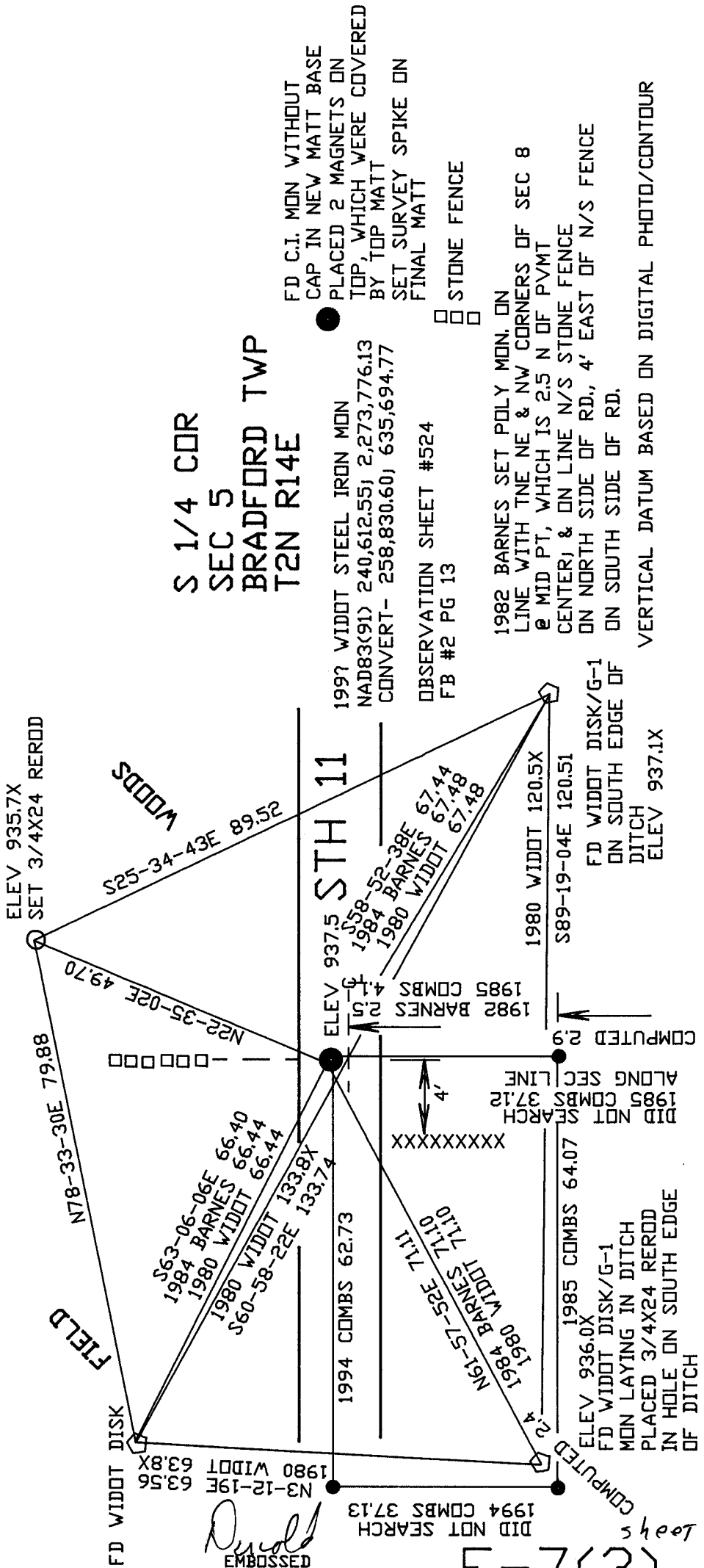
9/22/08

SHEET 2 OF 3

CORNER CODE **E-7(3)**

A.E. 7.08 REQUIREMENT

S 1/4 COR
SEC 5
BRADFORD TWP
T2N R14E



FD C.I. MON WITHOUT
CAP IN NEW MATT BASE
PLACED 2 MAGNETS ON
TOP, WHICH WERE COVERED
BY TOP MATT
SET SURVEY SPIKE ON
FINAL MATT
□ □ STONE FENCE

1997 WIDDOT STEEL IRON MON
NAD83(91) 240,612.55; 2,273,776.13
CONVERT- 258,830.60; 635,694.77
OBSERVATION SHEET #524
FB #2 PG 13

1982 BARNES SET POLY MON. ON
LINE WITH TNE NE & NW CORNERS OF SEC 8
@ MID PT, WHICH IS 2.5 N OF PVMT
CENTERJ & ON LINE N/S STONE FENCE
ON NORTH SIDE OF RD., 4' EAST OF N/S FENCE
ON SOUTH SIDE OF RD.
VERTICAL DATUM BASED ON DIGITAL PHOTO/CONTOUR
ELEV 937.1X

Embossed Seal
D. Arnold
L. Barnes

80/22/08

E-7(3)

Sheet 3 of 3