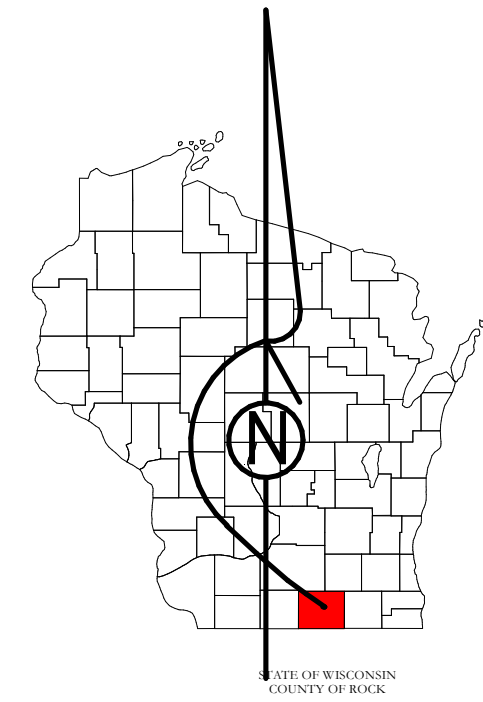


Property Division Map

Town
of
Fulton

T. 4 N. - R. 12 E.

Section 14 SWNW



PREPARED BY

REAL PROPERTY DESCRIPTION
DEPARTMENT

USING

ROCK COUNTY
GEOGRAPHIC INFORMATION SYSTEM

DUPLICATION OF THIS MAP PROHIBITED
WITHOUT THE WRITTEN CONSENT OF THE
REAL PROPERTY DESCRIPTION DEPARTMENT.

THIS MAP WAS PREPARED PURSUANT
TO SECTION 70.09 WIS. STATS.
USING PUBLIC RECORDS. IT IS NOT INTENDED
TO BE A SUBSTITUTE FOR AN
ACTUAL FIELD SURVEY
AND IS ADVISORY ONLY.

DISTANCES SHOWN ON THIS
MAP WERE PRODUCED BY
THE GIS SYSTEM AND ARE
FOR REFERENCE ONLY.
SEE DOCUMENT OF RECORD
FOR ACTUAL DISTANCE.

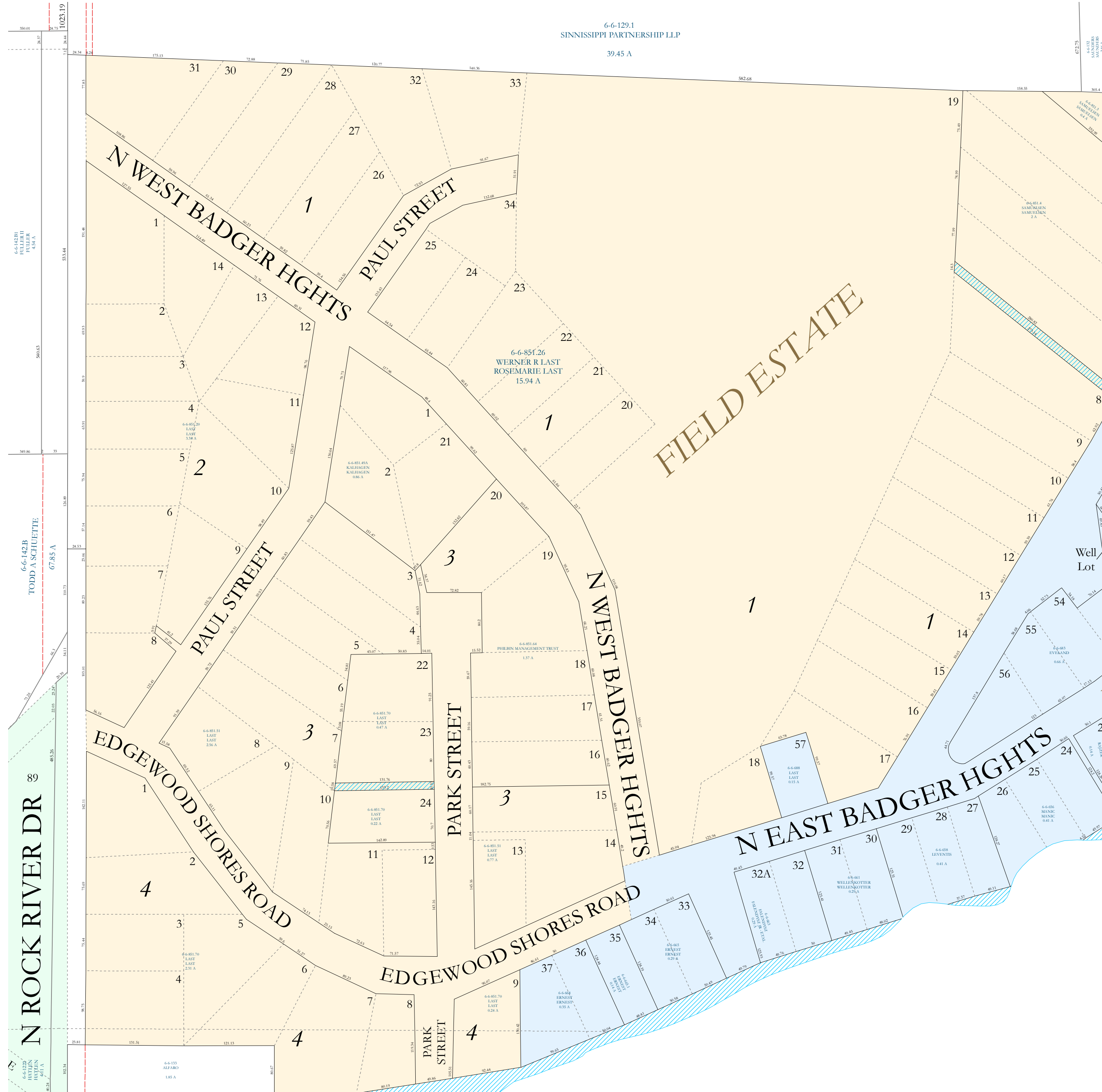
0 12.5 25 50 75 100
Feet

- | | | | |
|--|------------------|--|--------------|
| | Gap | | dam |
| | Overlap | | easement |
| | City of Edgerton | | hydro |
| | CSM | | lots |
| | CSMHYDRO | | parcels |
| | CSMLOT | | parcelshydro |
| | CSMLOTHYDRO | | roadrw |
| | MFL | | |

See Pages

January 1, 2022

14 SWNW



14 NW SW