



**Groundwater Nitrate Work Group
Monday January 21, 2019 @ 8:00 AM
UWEX Building, Conference Room
3506 N. Highway 51, Building A
Janesville WI**

AGENDA

1. Call Meeting to Order.
2. Approval of Agenda.
3. Approval of Minutes from the December 10, 2018 meeting.
4. Communications.
5. Monitoring Well Sampling Update.
6. DNR Proposed Project.
7. Discussion on long term strategies regarding GW Nitrate issues.
8. Cover Crop Conference – Registration (Land Conservation Committee approved spending).
9. Next Meeting Date, Time, and Location.
10. Adjourn.

The County of Rock will provide reasonable accommodations to people with disabilities. Please contact us at 608-757-5510 or e-mail countyadmin@co.rock.wi.us at least 48 hours prior to a public meeting to discuss any accommodations that may be necessary.

YOU'RE INVITED

WISCONSIN COVER CROP CONFERENCE

February 20, 2019

Stevens Point, WI • Holiday Inn

Farmers and agricultural professionals from around the state are coming together again to share and learn about all things cover crops. Whether you're a seasoned cover crop expert or an absolute beginner, there will be something for everyone!

Keynote Speaker: Blake Vince

Nuffield Scholar and long-time no-till & cover crop farmer from southwestern Ontario

Join us for a pre-conference dinner and discussion:

- Bugging Out on Soil Health -

The diversity & function of soil microbes

February 19, 2019 • 5:00 PM

Taking place after the DATCP Producer-Led Workshop

REGISTRATION

	Early Bird Rate (Before February 6)	Regular Rate (After February 6)
Conference ONLY	\$50.00	\$60.00
Conference PLUS Soil Health Dinner	\$70.00	\$85.00

For more information & registration: <http://fyi.uwex.edu/covercrop/>

cover crops
in WISCONSIN

WISCONSIN COVER CROP CONFERENCE

AGENDA

Tuesday, February 19th

10:00 - 4:00 Producer-led Watershed Conference

5:00 - 8:00 *Bugging Out on Soil Health* with Thea Whitman

Wednesday, February 20th

8:00 - 9:00 Early Riser Farmers Figuring it Out Discussions

- Relay cropping
- Planting green
- Spring seeding
- Interseeding

9:00 - 9:30 Break and Registration for Conference attendees

9:30 - 10:30 Keynote Speaker: Blake Vince - *#RootsNotIron*

10:45 - 12:00 Concurrent Sessions: *Select a session*

Session 1: Breaking the tillage cycle

Session 2: Managing manure with cover crops

Session 3: Cover crop species selection & planting in WI

12:00 - 1:00 Lunch and time to visit with exhibitors

1:00 - 2:15 Concurrent Sessions: *Select a session*

Session 4: Pest considerations with cover crops - weeds & insects

Session 5: Using a roller crimper with cover crops

Session 6: Using cover crops as a forage

2:45 - 4:00 Concurrent Sessions: *Select a session*

Session 7: Machinery modifications for no-till and covers

Session 8: Nitrogen management with cover crops

Producer-Led Watershed Protection Grants Program Basics

The Wisconsin Department of Agriculture, Trade and Consumer Protection (DATCP) will award grants to producer-led groups that focus on ways to prevent and reduce runoff from farm fields and farmsteads through the **Producer-Led Watershed Protection Grant Program**.

GOAL: Improve Wisconsin's soil and water quality by encouraging producer-led conservation decision making and solutions

GRANT AWARDS?

- \$750,000 is available each fiscal year.
- Grants cannot exceed \$40,000 per group per year.

WHO CAN APPLY?

- A group of at least 5 eligible producers working to improve water quality through conservation activities. An "eligible producer" means the operator of a farm that produced at least \$6,000 in gross farm revenues during the taxable year or a total of at least \$18,000 in gross farm revenues during 3 taxable years.

WHEN?

- Applications will be accepted once annually. Check the DATCP producer-led webpage for Request for Proposals (RFP) announcements and application deadlines.

REQUIREMENTS?

- Assist other agricultural producers in a watershed to voluntarily conduct water quality improvement efforts.
- Group must work with and form a Memorandum of Understanding (MOU) with a collaborator listed on the right.
- Grant funding must be accepted and administered by a producer-led group that is a legal entity, or has a legal entity acting on behalf of the group. The definition of a legal entity is provided in the RFP.
- Group must provide matching funds at least equal to their grant request.

COLLABORATORS

The following collaborating entities may provide technical or other assistance to producer-led groups:

- DATCP
- DNR
- COUNTY LAND CONSERVATION COMMITTEES
- UW EXTENSION
- DISCOVERY FARMS
- NONPROFIT CONSERVATION ORGANIZATIONS

WEBPAGE RESOURCES & ALL GRANT INFORMATION

[https://datcp.wi.gov/
Pages/Programs_Services/
ProducerLedProjects.aspx](https://datcp.wi.gov/Pages/Programs_Services/ProducerLedProjects.aspx)



QUESTIONS?

608-224-4622, rachel.rushmann@wisconsin.gov

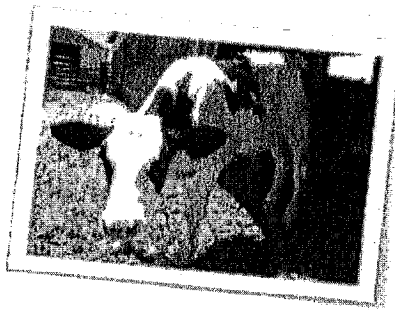
Wisconsin Department of Agriculture, Trade and Consumer Protection

PROJECT COSTS THAT MAY BE ELIGIBLE FOR FUNDING

Please note: These are not exhaustive lists. We encourage innovative ideas and highly recommend reaching out to the program manager to discuss the suitability of your project.

START-UP COSTS

- Work planning
- Mission statement development
- Goal setting

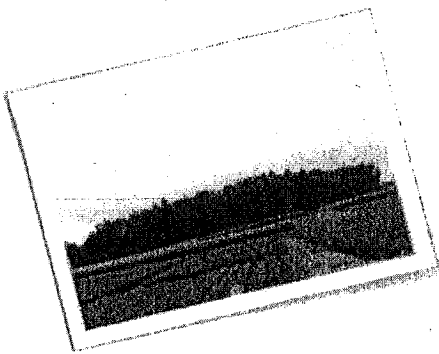


IMPLEMENTATION & OUTREACH

- Learning/field days
- Bringing in experts to discuss relevant topics such as soil health, nutrient management and existing water quality monitoring data
- Measuring and promoting the economic and environmental benefits of conservation practices
- Developing innovative approaches to manure storage/stacking or sharing conservation equipment to increase or identify economic and environmental benefits of these practices
- Outreach activities such as conferences, workshops or field days to increase voluntary producer and agribusiness participation in your watershed project
- On-farm research with your collaborator to identify economic and environmental benefits and opportunities for conservation practices
- Cost-effective edge-of-field and/or in-stream water quality monitoring
- Farm assessments to evaluate farm, erosion control, manure and nutrient management practices and identify solutions to resource concerns

INCENTIVE PAYMENTS TO PRODUCERS

- Soil testing
- Cover crops
- Nutrient and manure management planning
- No-till or reduced tillage
- Buffer strips
- Grassed waterways
- Manure composting
- Low-disturbance manure injection
- Other non-traditional conservation practices



STEPS TO SUCCESS

These steps have been critical to the success of existing producer-led groups:

1. Identify your watershed's specific resource concerns and develop a baseline.
2. Identify potential changes or improvements your group would like to make in your watershed to address those resource concerns.
3. Organize a leadership structure within your producer-led group.
4. Develop a vision, goals and work/watershed plan for your project.
5. Execute your plan through education, outreach, and conservation practices and strategies.
6. Track and reward progress, participation, and success.

WEBPAGE RESOURCES & ALL GRANT INFORMATION

https://datcp.wi.gov/Pages/Programs_Services/ProducerLedProjects.aspx

QUESTIONS?

608-224-4622, rachel.rushmann@wisconsin.gov

Wisconsin Department of Agriculture, Trade and Consumer Protection