

PLAT AND RECORD

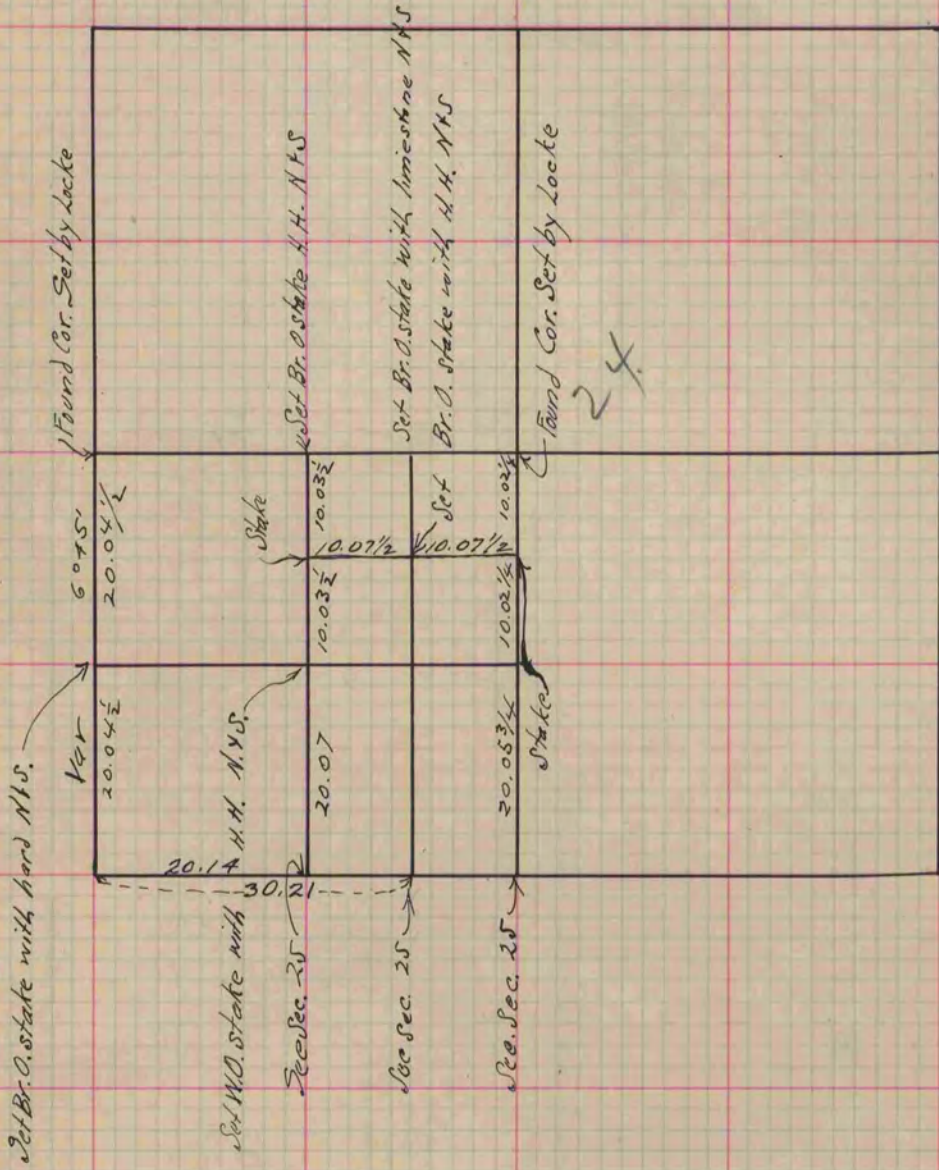
Of a Survey on Section 24 T 1 R 13 E. of the 4 P. M. in Turtle Township

Rock County, Wisconsin, made June the 12th 1869

I hereby certify that the following is a correct record of said survey as made by me.

COUNTY BUILDING
IN CITY OF BELOIT

(Signed) R. R. Lee
R.H.B. Dep. County Surveyor.



Copied from P. 282 Vol. 1 County Surveyor's Record.