

PLAT AND RECORD

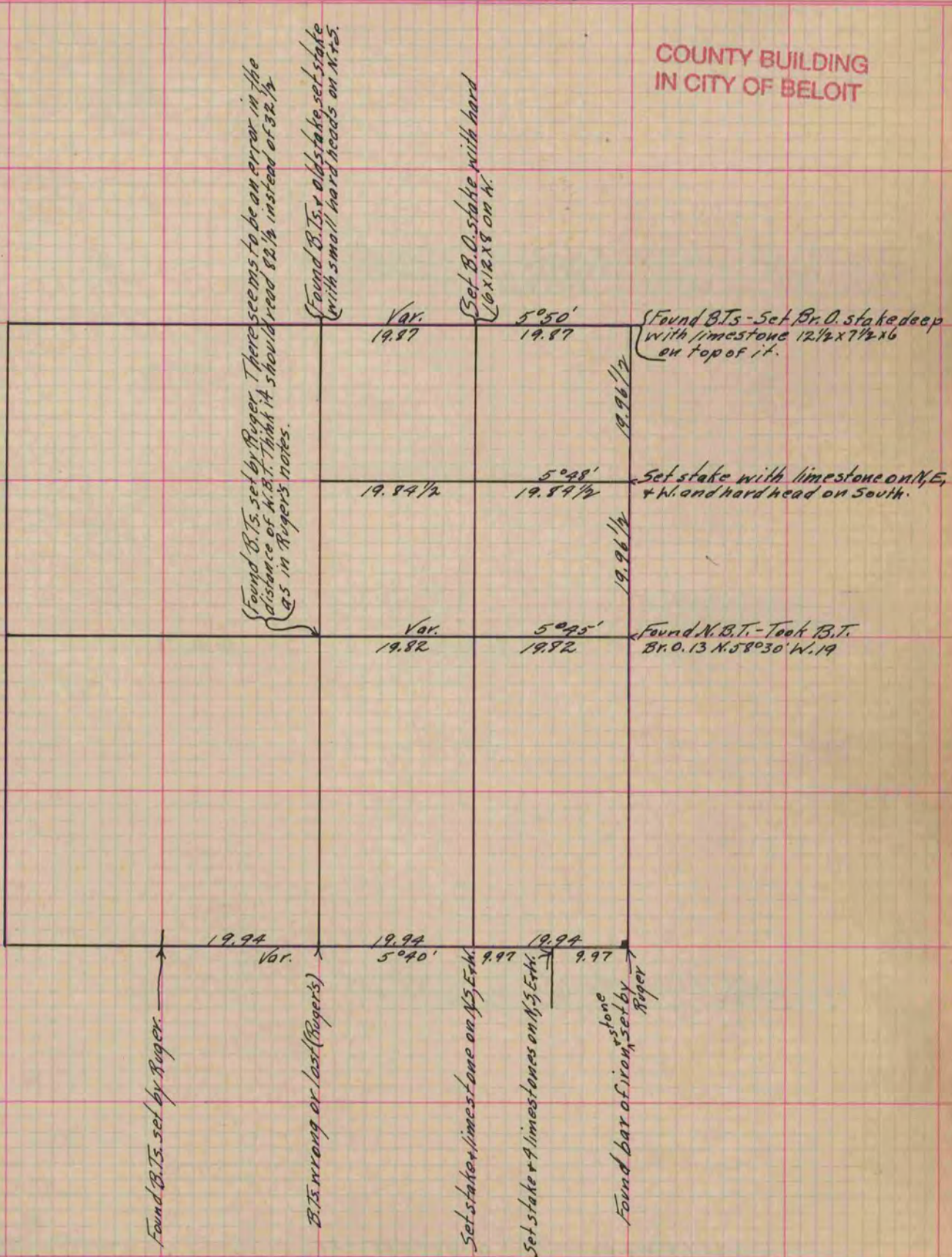
211

Of a Survey on Section 24 T 3 R 13 E. of the 4 P. M. in Harmony Township
 Rock County, Wisconsin, made June the 23rd 1864

I hereby certify that the following is a correct record of said survey as made by me.

(Signed) S. D. Locke
S. D. Locke

County Surveyor.



Copied from Upper 1/2 of Page 206 Vol. 1. Original County Surveyor's Record.