

# PLAT AND RECORD

121

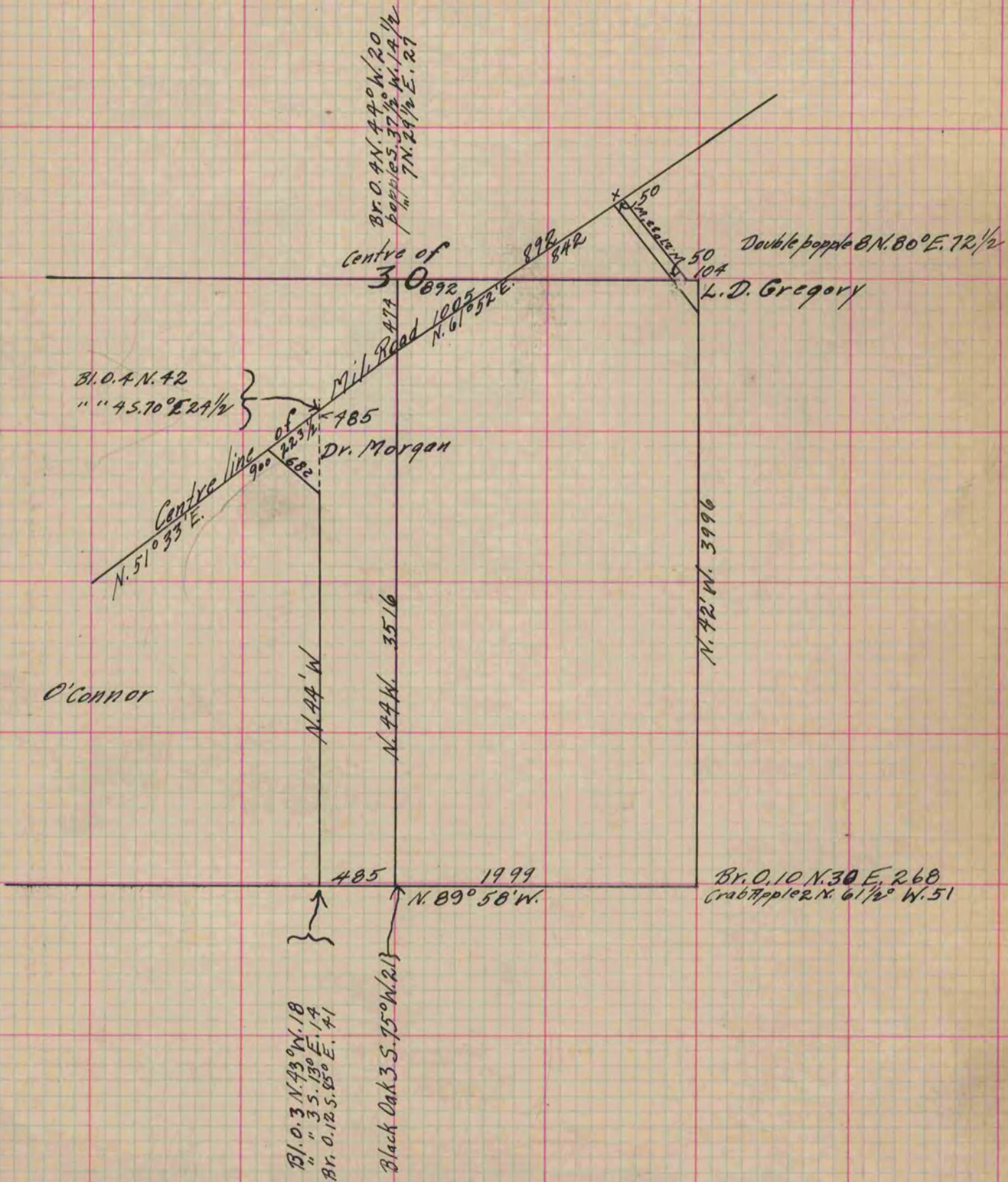
Of a Survey on Section 30 T 1 R 13 E. of the 4 P. M. in Turtle Township  
Rock County, Wisconsin, made October the 1st 1859

I hereby certify that the following is a correct record of said survey as made by me.

COUNTY BUILDING  
IN CITY OF BELOIT

(Signed) E. F. Hobart  
DWS

Deputy  
County Surveyor.



Copied from Page 130 Vol. 1. Original County Surveyor's Record.