

PLAT AND RECORD

Of a Survey on Sections 26 + 35 T 2 R 12 E. of the 4 P. M. in Rock Township

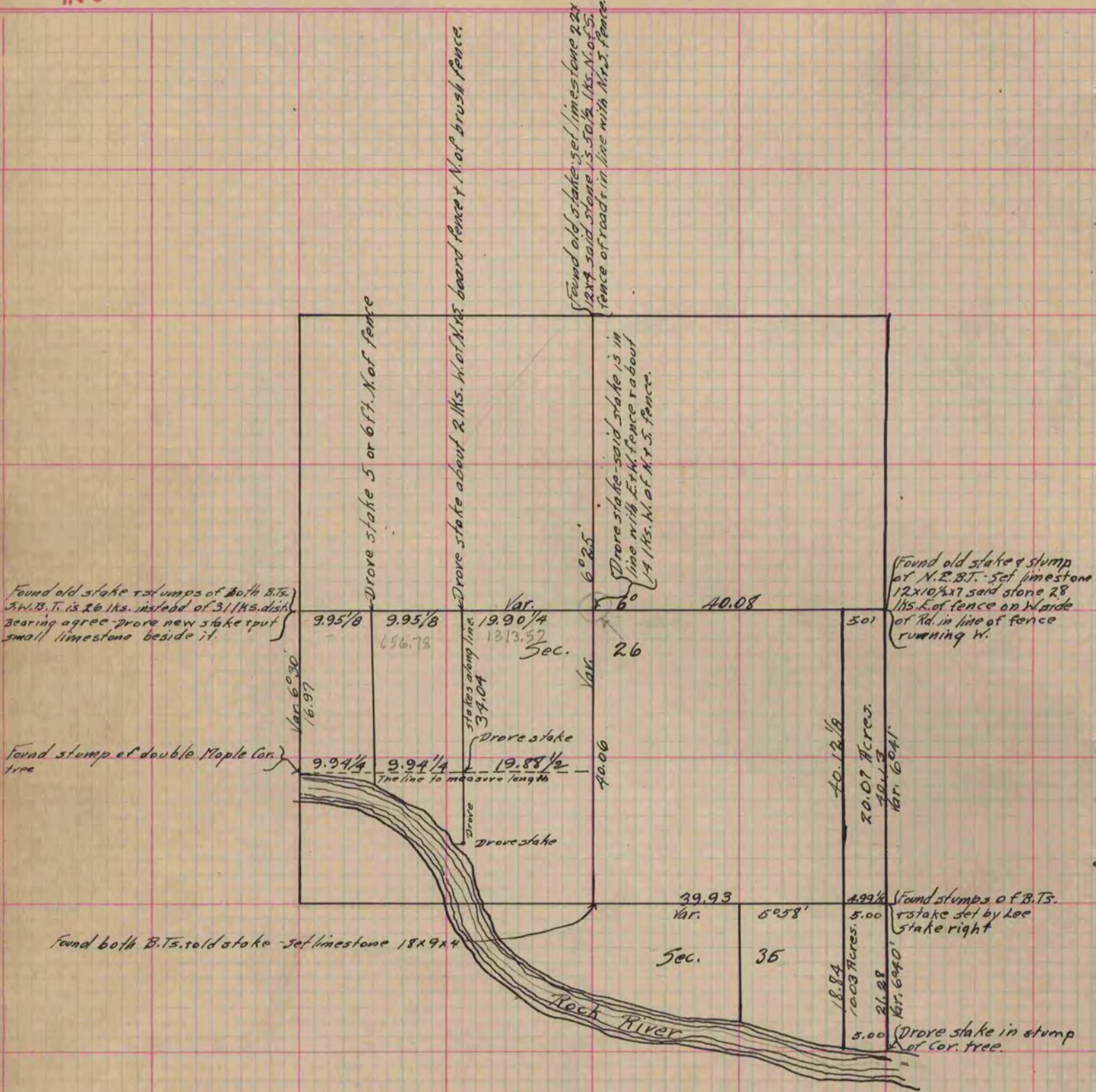
Rock County, Wisconsin, made October the 13 + 14 1873

I hereby certify that the following is a correct record of said survey as made by me.

COUNTY BUILDING
IN CITY OF BELOIT

(Signed) Edward Roger
R.M.B.

County Surveyor.



Copied from Page 68 Vol. 2 Original County Surveyor's Record.