

PLAT AND RECORD

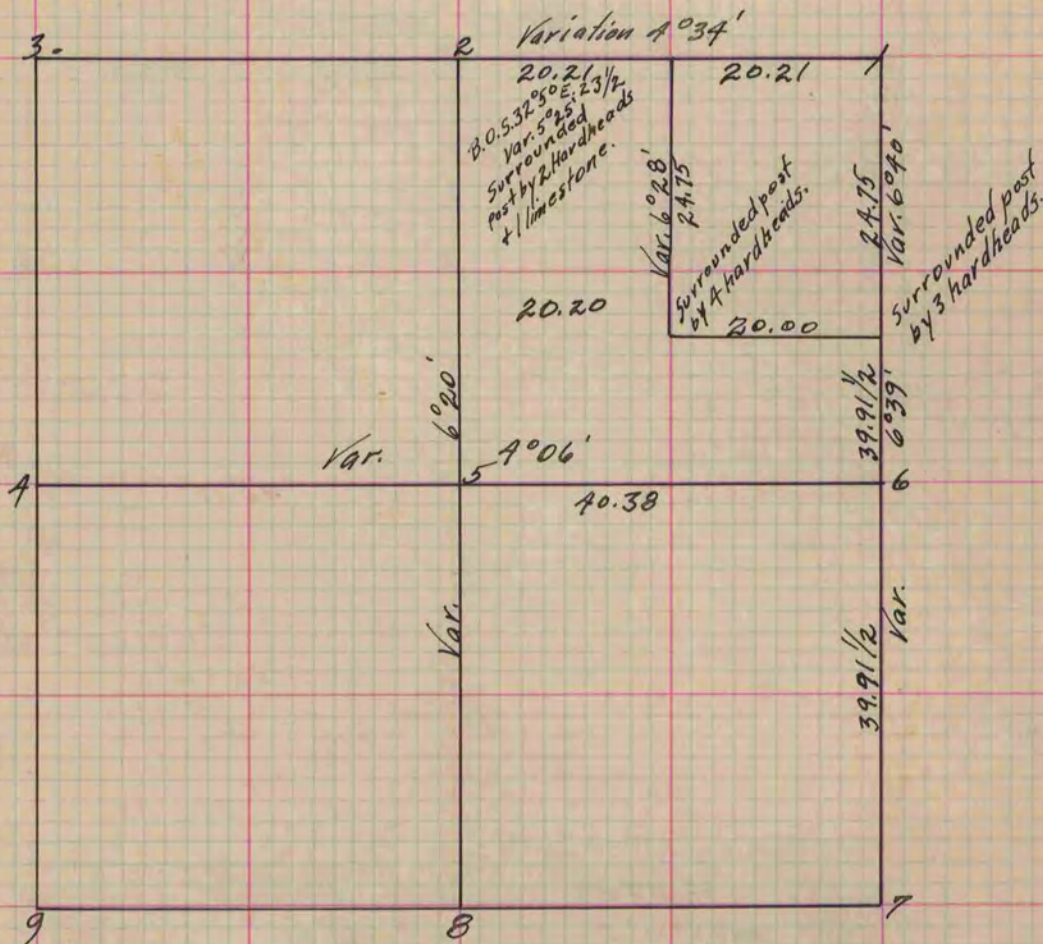
Of a Survey on Section 22 T 4 R 14 E. of the 4 P. M. in Wima Township
 Rock County, Wisconsin, made June the 22nd 1859

I hereby certify that the following is a correct record of said survey as made by me.

COUNTY BUILDING
 IN CITY OF BELOIT

(Signed) Edward Ruger
 County Surveyor.

Distances given in chains.
 Variations marked on the lines.



Surrounded post by 3 hard heads { At Fig. 2 took witness trees - White Oak 20 S. 41° 40' W. 71
 Burr Oak 16 S. 73° 25' E. 117
 Sec. P. by 3 hard heads { Fig. 4 Burr Oak 18 S. 0° 20' E. 86 Var. 6° 20'
 Run the East & West Mile through the Section on a Var. 4° 06'
 by Forward & Back sights.
 Fig. 5 Black Oak 5.82° 40' E. 51 Black Oak 5 N. 30° W. 101 1/2
 Surrounded post by 3 hard heads. Var 6° 20'
 Fig. 6 Surrounded post by 3 hard heads.
 " 7 " " " " " "
 " 8 " " " " " "

All traces of East 1/4 Post being gone put it in from Sec. Corners.

Copied from Page 113 Vol. 1 Original County Surveyors Record.