

PLAT AND RECORD

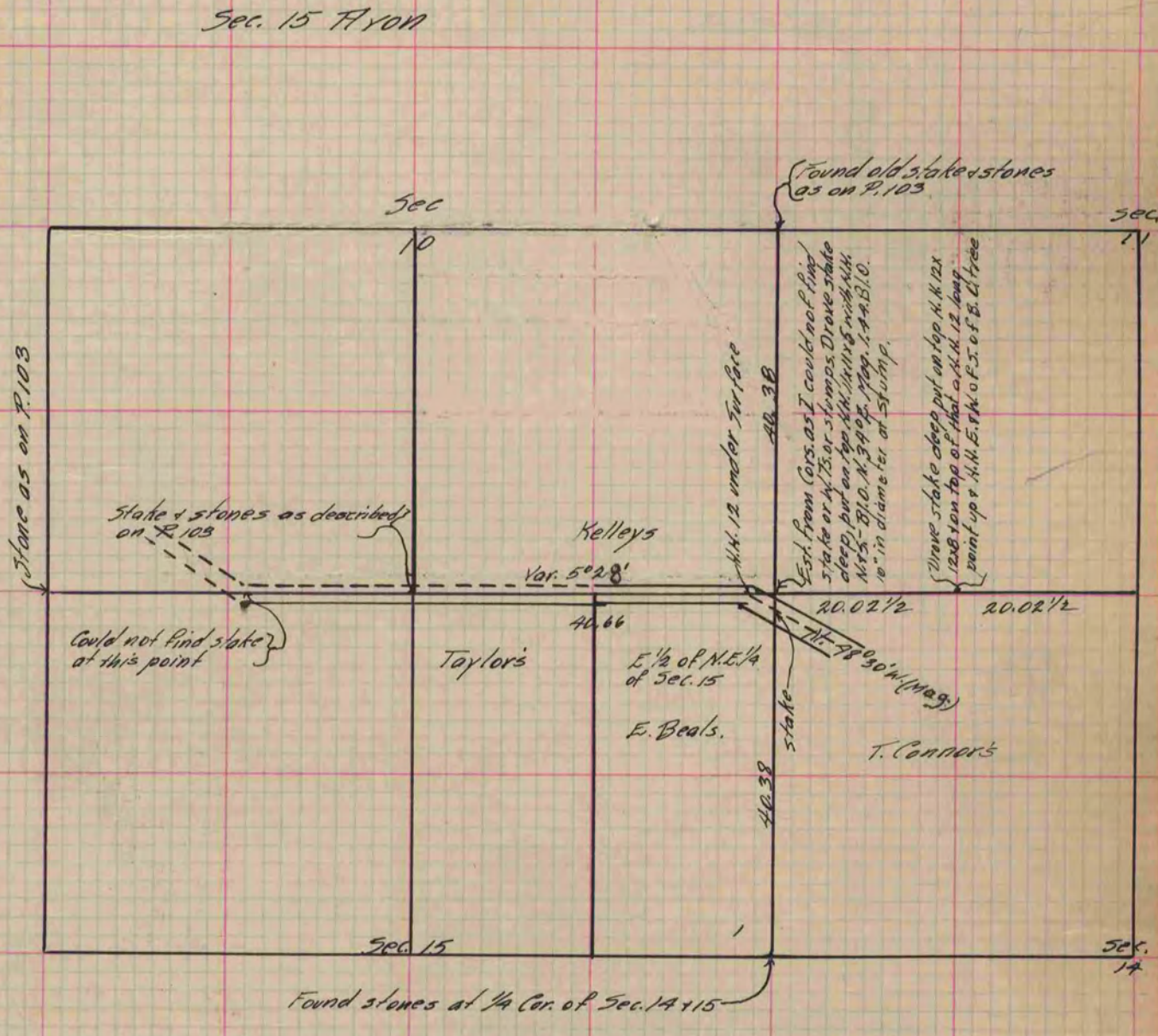
Of a Survey on Section 15 T 1 R 10 E. of the 4 P. M. in Avon Township
Rock County, Wisconsin, made December the 14, 15 + 16 1881

I hereby certify that the following is a correct record of said survey as made by me.

COUNTY BUILDING
IN CITY OF BELOIT

(Signed) J. F. Holmes
R.H.B.

County Surveyor.



To locate the N.E. Cor. of Sec. 15 Avon & the Beloit & Monroe Rd.
across the E. 1/2, of N.E. 1/4

Copied from P. 279 Vol. 2 County Surveyors Record.