

PLAT AND RECORD

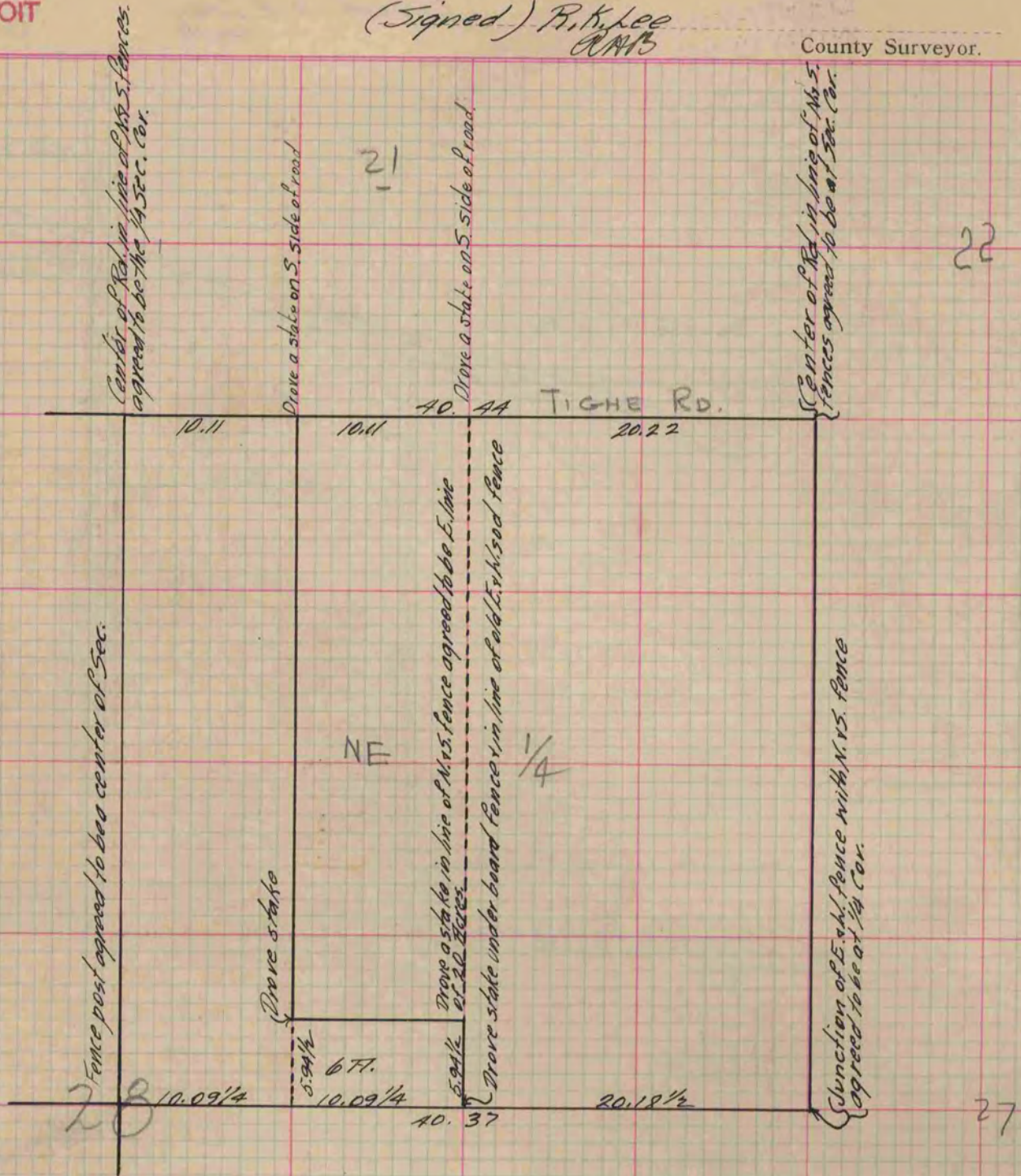
Of a Survey on Section 28 T 1 R 14 E. of the 4 P. M. in Clinton Township
Rock County, Wisconsin, made September the 20th 1881

I hereby certify that the following is a correct record of said survey as made by me.

COUNTY BUILDING
IN CITY OF БЕЛОIT

(Signed) P. Kylee
P.M.S.

County Surveyor.



Copied from P. 272 Vol. 2 County Surveyor's Record.