

# PLAT AND RECORD

Of a Survey on Section 35 T 4 R 13 E. of the 4 P. M. in Milton Township

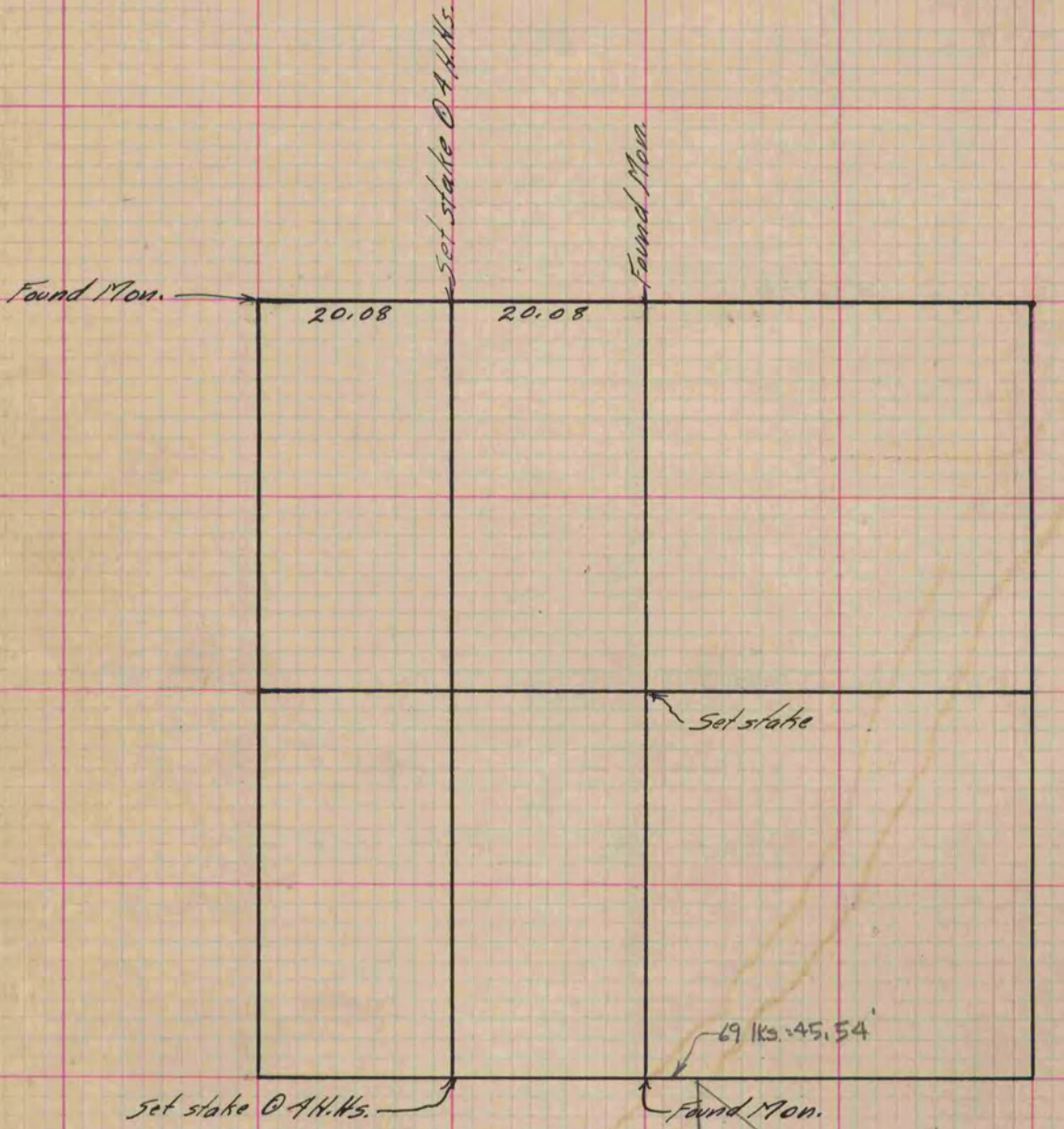
Rock County, Wisconsin, made May the 28<sup>th</sup> 1073

I hereby certify that the following is a correct record of said survey as made by me.

COUNTY BUILDING  
IN CITY OF BELOIT

(Signed) R. H. Lee  
R.H.B.

{ Deputy  
County Surveyor.



See Vol. 4, P. 198

HARMONY  
2

*Copied from Page 60 Vol. 2. Original County Surveyor's Record.*