

# PLAT AND RECORD

Of a Survey on Section 9 T 3 R 12 E. of the 4 P. M. in Janesville Township

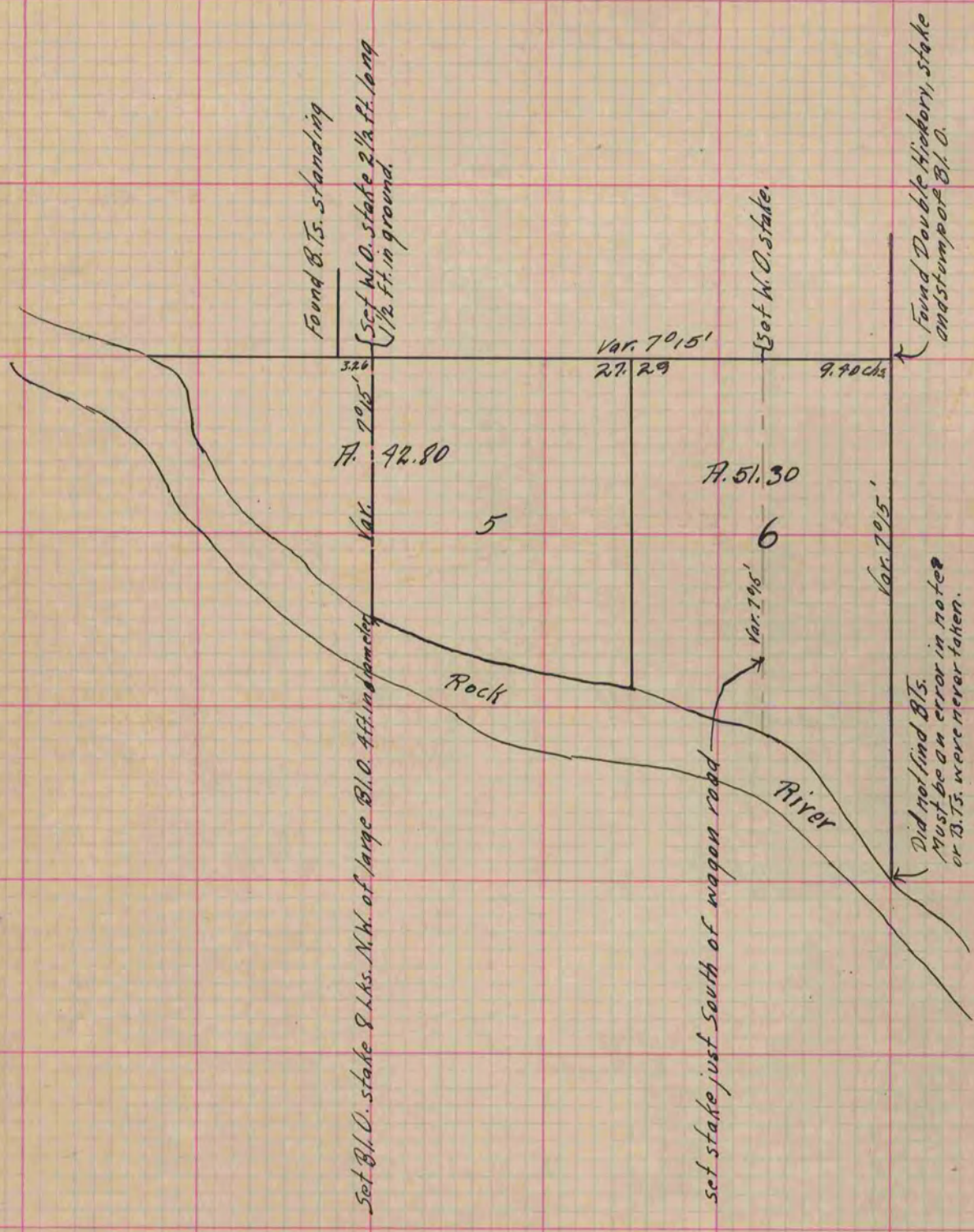
Rock County, Wisconsin, made February the 29<sup>th</sup> 1864

I hereby certify that the following is a correct record of said survey as made by me.

COUNTY BUILDING  
IN CITY OF BELOIT

(Signed) S. D. Locke  
S. D. Locke

County Surveyor.



Copied from lower part of Page 200 Vol. 1. Original County Surveyor's Record