

U.S. PUBLIC LAND SURVEY MONUMENT RECORD

For Public Land Survey Corners In: WI ADMINISTRATIVE CODE A-E 7.08 REQUIREMENT

T. 3 N. - R. 11 E. of the 4th P.M.

CORNER CODE INDEX

(PLACE "◆" SYMBOL AT PROPER PLSS CORNER LOCATION)

A	2	3	4	5	6	7	8	9	10	11	12	13	14	15	16	17	18	19	20	21	22	23	24	25
B																								
C																								
D																								
E																								
F																								
G	7	8	9	◆	10	11	12																	
H																								
J																								
K	18	17	16	15	14	13																		
L																								
M																								
N																								
O																								
P	19	20	21	22	23	24																		
Q																								
R																								
S	30	29	28	27	26	25																		
T																								
U																								
V																								
W																								
X	31	32	33	34	35	36																		
Y																								
Z																								

CENTER TWP
ROCK COUNTY WI

COORDINATES

(GNSS DERIVED VIA WISCORS)

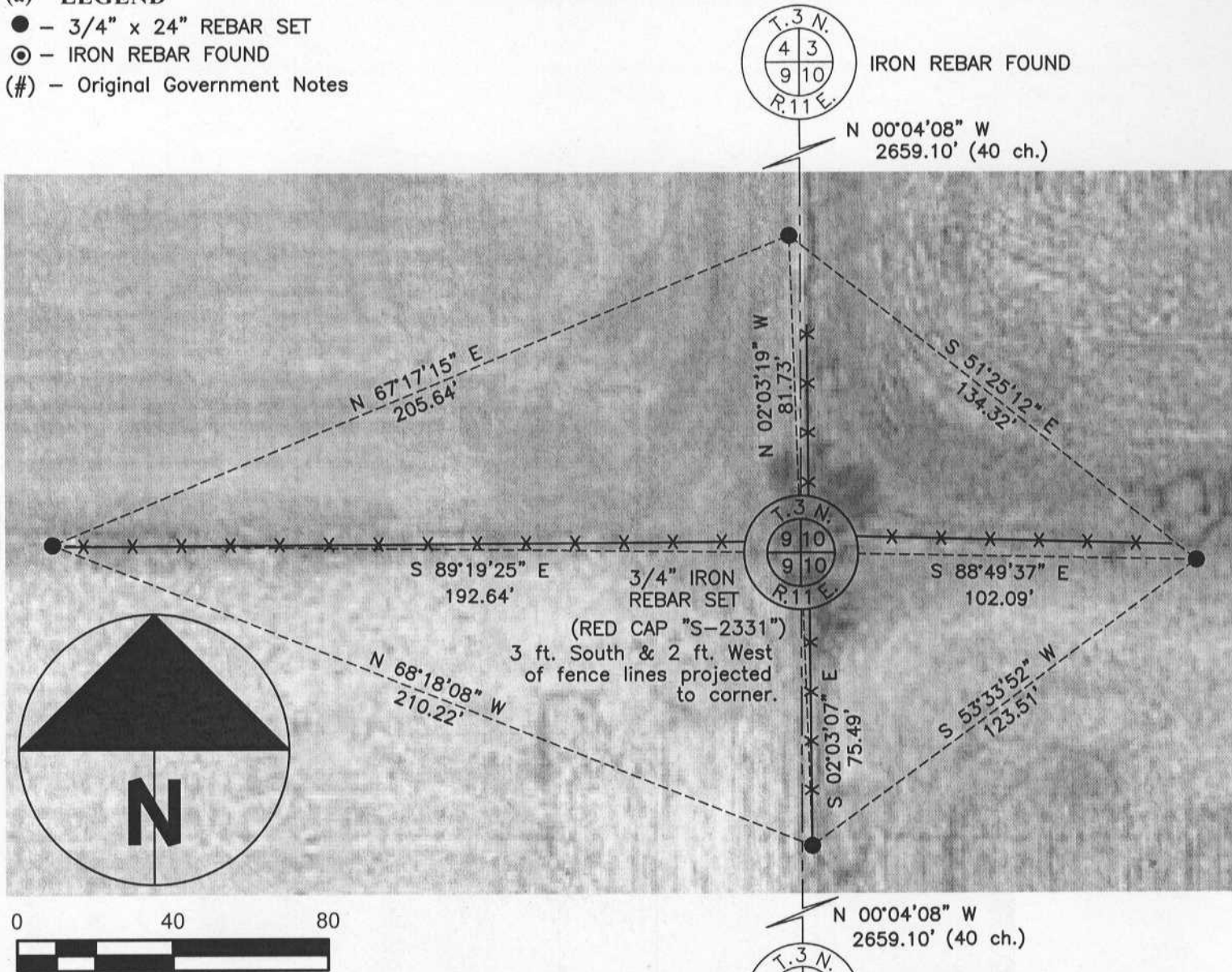
NORTHING: 289155.89 ELEV: N/A
EASTING: 448168.78

Hor. Datum: WCCS-ROCK, (NA2011)

Vertical Datum: NAVD 88, (If applicable)

(a) LEGEND

- - 3/4" x 24" REBAR SET
- ⊙ - IRON REBAR FOUND
- (#) - Original Government Notes



B) Describe any record evidence, monument evidence, occupational evidence, testimonial evidence or any other material evidence you considered, and whether the monument was found or placed.

No modern era tie-sheet exists for this corner and the only record for the same is in the original Government notes. I computed the corner at the split between the NW and SW corners of Section 10. A cast-iron monument was found at the Southwest corner and an iron rebar, (Set by Combs & Assoc., Inc.), was the basis for the Northwest corner. This project was done in conjunction with a Combs project and we shared survey data. The NW corner was computed by me and set by Combs due to Railroad Company and geographic restrictions. The corners surveyed and mapped are all a minimum of ¼ mile off-road requiring substantial walking and/or driving across fields. This project was completed during the winter with much snow that hampered efforts.

C) Was the corner restored through acceptance of (1) an obliterated evidence location, or, (2) a found perpetuated location?

The corner was obliterated and restored through acceptance of existing PLSS monuments supported by the proximity of existing fencing. The monument falls roughly 3 feet south and 2 feet west of the nearby fence lines projected to the PLSS corner location. Nearby snow has drifted 3-5 feet deep in all areas within 20-25 feet of the corner.

D) Describe any material discrepancy between the location of the corner as restored or reestablished and the location of that corner as previously restored or reestablished by distance and direction. Show the discrepancy on the plan view drawing under (a), above. Show the distances between the corner as previously restored or reestablished and (1) the corner as restored or reestablished, and (2) to at least 4 of the witness monuments shown on the drawing in (a), above.

I did not find a discrepancy between the corner restored and a previously documented corner location; the only prior information is that contained with the original Government notes.

(E) Was the corner reestablished through lost corner proportionate methods? If so, show the method, including the directions and distances to other public land survey corners used as evidence or used for proportioning the corner location.

N/A

I, **Jason R. Houle**, hereby certify that the corner location as identified by the corner code index was determined by me under my direction and control and that this U.S. Public Land Survey Monument Record is correct and complete to the best of my knowledge and belief.

CORNER CODE: G-13
(A.E. 7.08 REQUIREMENT)

