

# U.S. PUBLIC LAND SURVEY MONUMENT RECORD

For Public Land Survey Corners in the

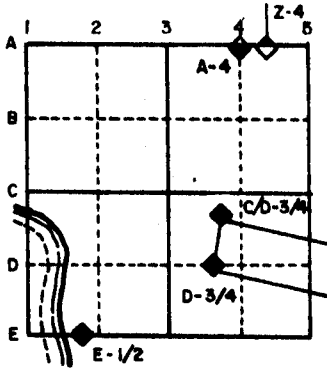
T. 7 N., R. 12 E.

## CORNER CODE INDEX

	1	2	3	4	5	6	7	8	9	10	11	12	13	14	15	16	17	18	19	20	21	22	23	24	25
A																									
B																									
C	6																								
D																									
E																									
F																									
G																									
H																									
I																									
J																									
K																									
L																									
M																									
N																									
O																									
P																									
Q																									
R																									
S																									
T																									
U																									
V																									
W																									
X																									
Y																									
Z																									

PLACE MONUMENT SYMBOL (◆) AT PROPER LOCATION ON ABOVE INDEX

### EXAMPLE



CITY OF EDGERTON TWP  
 ROCK COUNTY WI

IF AVAILABLE  
 STATE PLANE COORDINATES

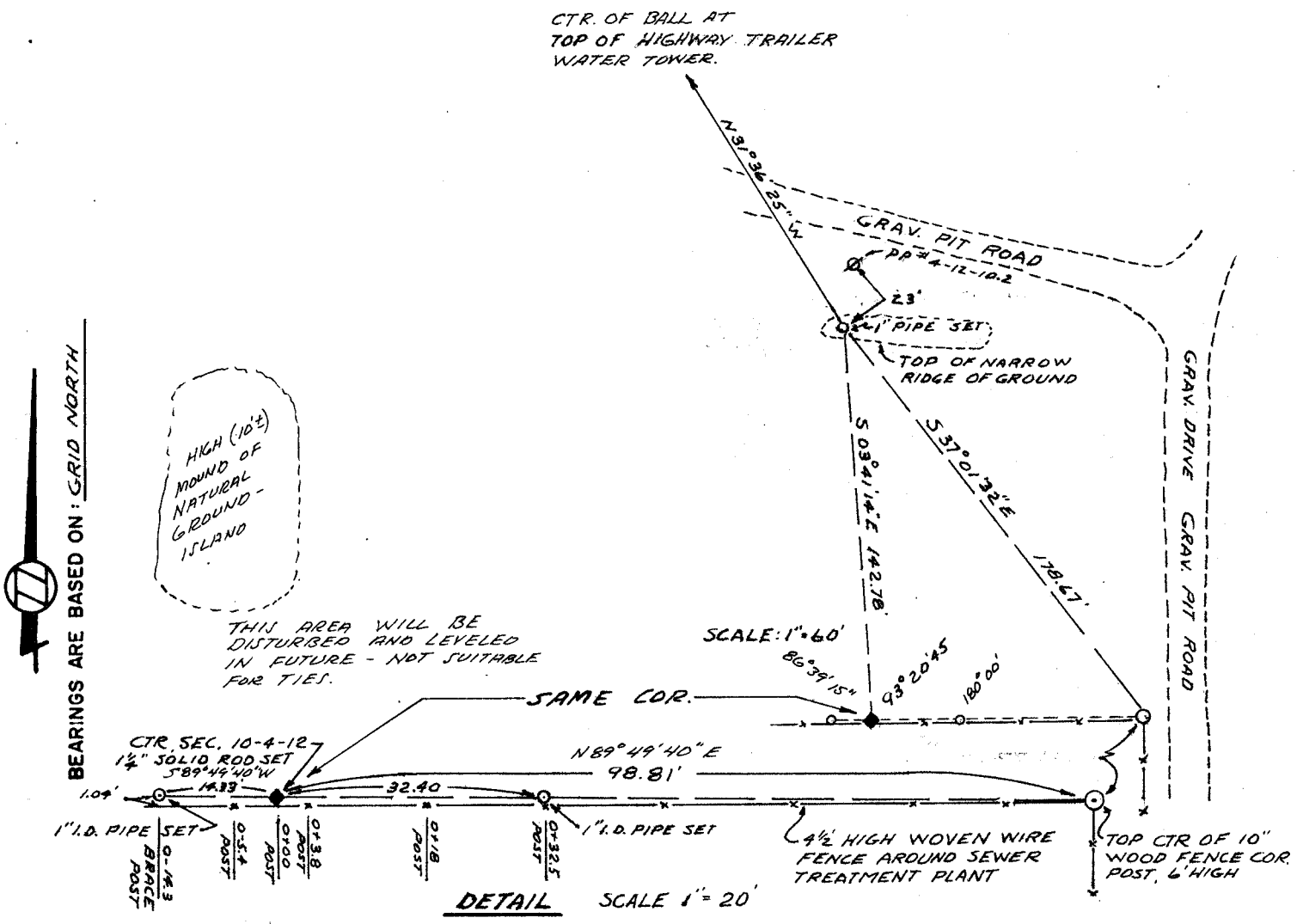
North (Y) 302,326.292 Eleve. (Z) \_\_\_\_\_

East (X) 2,251,651.443 Zone \_\_\_\_\_

Hor. Datum GRID NORTH Vert. Datum \_\_\_\_\_

STATE PLANE COORD. SYSTEM, SOUTH ZONE

(a) ◆ CORNER MONUMENT ○ WITNESS MONUMENT



FIELD BOOK \_\_\_\_\_ PAGE # \_\_\_\_\_

**MICROFILMED**

SHOW A PLAN VIEW DRAWING DEPICTING THE CORNER MONUMENT AND SURROUNDING PHYSICAL FEATURES, INCLUDING THE EXCAVATION AREA AND DEPTH. THE CORNER MONUMENT SHALL HAVE THE FOLLOWING CHARACTERISTICS: 1) HAVE AT LEAST TWO PREDETERMINED BREAK-OFF POINTS. 2) IF BROKEN, LEAVE A PERMANENTLY MAGNETIZED REMNANT AT THE ORIGINAL POINT. 3) MUST BE EXTENDABLE. 4) THE CAP IS INSCRIBED: ROCK COUNTY SURVEY MONUMENT - PENALTY FOR DISTURBING MARKER. 5) OR AN EXISTING CUT LIMESTONE. AN IRON PIPE 1 1/2" x 4'0" (MINIMUM) MAY BE USED IN AREAS WHERE GROUND WATER IS WITHIN ONE FOOT OF THE SURFACE. IF THE CORNER IS OCCUPIED BY AN IMPROVEMENT (MANHOLE, BURIED CABLE, ETC.) ANY DURABLE, DISTINCT MONUMENT MAY BE USED. CORNERS SHALL BE REFERENCED WITH AT LEAST 4 DURABLE WITNESS MONUMENTS. WITNESS MONUMENTS SHALL BE MADE OF CONCRETE, NATURAL STONE, IRON OR OTHER EQUALLY DURABLE MATERIAL, EXCEPT WOOD. DESCRIBE THE CORNER AND THE WITNESS MONUMENTS.

CORNER CODE:

G-15

(b.) Describe any record evidence, monument evidence, occupational evidence, testimonial evidence or any other material evidence you considered, and whether the monument was found or placed. The 1 1/4" smooth round solid iron rod set at the corner described hereon was re-set from previous surveys of record in the County Surveyors Office listed as follows: 1. Brown survey in 1900, Vol. 2, P. 515 of C.S. books shows a railroad rail; 2. Numerous deed descriptions after this date commence at this point; 3. B.J. Sunny survey still shows and uses railroad rail in 1942 on Plat of Survey of O.L. 270 and part of O.L. 272; 4. V. 3, P. 40 of C.S. books, undated survey by Kerch makes reference to railroad rail by Brown and B.T. Stump from a Ruger survey; 5. B.J. Sunny survey made in 1939, Vol. 3, P. 427 C.S. Books; 6. 1975 City of Edgerton Control survey by George A. Weir, Land Surveyor, Royal Oaks Engineering giving state plane coordinates to this corner.

(c.) Was the corner restored through acceptance of (1) an obliterated evidence location, or, (2) a found perpetuated location?

Corner was restored using state plane coordinates for an obliterated monument in place about 1975 and prior to then.

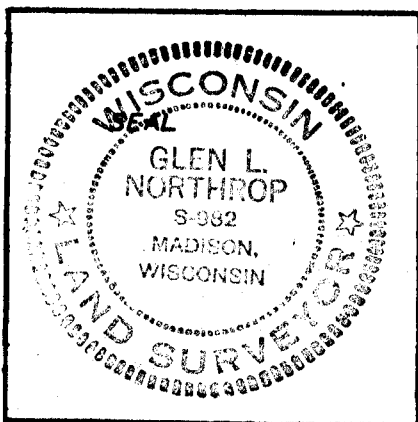
(d.) Describe any material discrepancy between the location of the corner as restored or reestablished and the location of that corner as previously restored or reestablished by distance and direction. Show the discrepancy on the plan view drawing under (a), above. Show the distances between the corner as previously restored or reestablished and (1) the corner as restored or reestablished, and (2) to at least 4 of the witness monuments shown on the drawing in (a), above.

NONE

(e.) Was the corner reestablished through lost corner proportionate methods? If so, show the method, including the directions and distances to other public land survey corners used as evidence or used for proportioning in determining the corner location.

NO

*Glen L. Northrop*  
I, Glen L. Northrop, hereby certify that the corner points as identified by the corner code index were, in a field survey on April 7, 1988, ~~established~~, re-established, ~~monumented~~, re-monumented, recovered or restored as expressed above and in conformance with the regulations and rules as required in the current manual of survey instructions of the United States Department of Interior, Bureau of Land Management.



COUNTY SURVEYOR FILING DATA

Date of Computer Entry \_\_\_\_\_

Date Received \_\_\_\_\_

Date Microfilmed \_\_\_\_\_

Treasurer's Receipt No. \_\_\_\_\_

Number of Included Sheets \_\_\_\_\_

AFFIX YOUR LAND SURVEYOR SEAL. *G-15*