

U.S. PUBLIC LAND SURVEY MONUMENT RECORD

For Public Land Survey Corners In:
T. A N. R. 12 E. 4th P.M.
CORNER CODE INDEX

WI ADMINISTRATIVE CODE A-E 7.08 REQUIREMENT
REV 10/23/2004 USMONREC.DWG

A	1	2	3	4	5	6	7	8	9	10	11	12	13	14	15	16	17	18	19	20	21	22	23	24	25	A	
B																										B	
C	6						5								3						2					C	
D																											D
E																											E
F																											F
G	7						8								10						11						G
H																											H
J																											J
K	18						17								15						14						K
L																											L
M																											M
N																											N
O																											O
P	19						20								22						23						P
Q																											Q
R																											R
S																											S
T	30						29								27						26						T
U																											U
V																											V
W																											W
X	31						32								34						35						X
Y																											Y
Z																											Z

FULTON TWP
ROCK COUNTY WI

IF AVAILABLE
ROCK COUNTY COORDINATES PREFERRED

North _____ Elev. _____

East _____

Hor. Datum _____ Vert. Datum _____

LATITUDE _____ ELLIPS. HT. _____

LONGITUDE _____

NAD83(91) _____ NETWORK ADJ. YR _____

GPS (X) _____ TRAVERSE (X) _____

BASED ON THE FOLLOWING CONTROL:

PLACE MONUMENT SYMBOL AT PROPER LOCATION ON ABOVE INDEX

CORNER MONUMENT WITNESS MONUMENT

BEARINGS ARE BASED ON: _____

FIELD BOOK _____ PAGE # _____ SHEET 1 OF 3

SHOW A PLAN VIEW DRAWING DEPICTING THE CORNER MONUMENT AND SURROUNDING PHYSICAL FEATURES, INCLUDING THE EXCAVATION AREA AND DEPTH.

PLANNING & ZONING COMMITTEE ADOPTED THIS FORM ON 12/2/1982

CORNER CODE G-5

FU535 ^

(B) Describe any record evidence, monument evidence, occupational evidence, testimonial evidence or any other material evidence you considered, and whether the monument was found or placed.

1834 (APR) HARRISON NORTH BET SECS 7 & 8

2376 LEAVE PRAIRIE
2640 QUARTER SEC COR {BURR O 20 N10E 81.18' BURR
O 20 N89E 112.2' BURR O 20 BURR O 20 } MARKED
3220.8 BURR O 12 IN DIAM
4070.88 BURR O 18 IN DIAM
5280 COR TO SEC 5,6,7,8 {BURR O 12 S38W 44.22' W.O.
20 S48E 58.08' BURR O 12 N50E 60.72' BURR O
12 N52W 77.22' LAND ROLLING 2ND RATE WITH
WHITE & BURR OAK TIMBER - PRAIRIE SAME AS
BEFORE

1871 RUGER #1079 & VOL 2 PG 57 FD FENCE POST AT COR.
ALSO FD STUMP OF NE BEARING TREE ALSO FD STUMP IN
THE RIGHT COURSE FOR EAST BEARING TREE BUT IT IS
149.16' INSTEAD OF 112.2' AS GIVEN IN FIELD NOTES. SET
IRREGULAR POINTED HARD HEAD STONE 19X17X11 &
SURROUNDED IT WITH STONES. VAR 8-12 TO E 1/4 COR SEC 8

1871 RUGER VOL 2 PG 79 & 1069 SEE SEC 8 FULTON PAGE 36.
VAR 7-18 2657.82 TO CEN SEC 7 & VAR 7-18 5344.68 TO W
1/4 COR SEC 7

1882 HOLMES VOL 2 PG 351 & 1077 SKETCH WITH
2697.42 2641.06

EAST & WEST 1/4 LINE SEC 8

AT D. FD STONES & STUMP AS DESCRIBED ON PAGE 36. RUN
LINE ON A VAR 7-15 PASSING 2 FT NORTH OF I AND AT H
4.29' NORTH OF STONE AT THE NORTH SIDE OF FENCE
POST. THE POINT H BEING NOT REGARDED AS
SATISFACTORY, FURTHER INVESTIGATION WAS DEFERRED,
BUT SHOWS THE MONUMENTS VERY NEARLY IN A DIRECT
LINE JUNE 22

1975 WPL #1076 302,077.70; 2,238,344.74 N1-57-41W 2646.07
TO NW COR SEC 8, S1-46-50E 2666.38 TO SW COR SEC 8 &
N88-49-32E 2700.19 CENTER SEC 8,

1975 BATTERMAN VOL 4 PG 279 WPL 302,077.70; 2,238,344.74
FD STONE.

1978 SANDSNES VOL 5 PG 447 302,077.70; 2,238,344.74

1983 BARNES VOL 6 PG 303 RECORD DATA. WP&L 302,077.70;
2,238,344.74. N88-49-32E 2700.19 TO CEN SEC 8, S1-46-
50E 2666.37 TO SW COR SEC 8, N1-57-41W 2646.08 TO NW
COR SEC 8. 5347.65 TO E 1/4 COR SEC 8

FD STONE OF RECORD 19X17X11 WITH HH ON EAST & WEST.
SLIPPED TWO MAGNETS UNDER STONE. STONE WAS TOO HEAVY TO
REMOVE AND REPLACE WITH A POLY. USED THE TOP CENTER FOR
THE LOCATION. THE TOP CENTER IS NOT THE CENTER OF THE
STONE. THIS POINT IS PROBABLY 0.3' +/- N/S AND 0.5' +/- E/W.
IT IS 0.3' SOUTH OF E/W FENCE & 0.6' EAST OF N/S FENCE LINE

SHEET 1 OF 3

CORNER CODE **G-5**

Donald Barnes
June 13, 2006

FU535

C) Was the corner restored through acceptance of (1) an obliterated evidence location, or, (2) a found perpetuated location?

ACCEPTED FOUND PERPETUATED LOCATION. THIS IS IN HARMONY WITH WPL COORDINATES.

D) Describe any material discrepancy between the location of the corner as restored or reestablished and the location of that corner as previously restored or reestablished by distance and direction. Show the discrepancy on the plan view drawing under (a), above. Show the distances between the corner as previously restored or reestablished and (1) the corner as restored or reestablished, and (2) to at least 4 of the witness monuments shown on the drawing in (a), above.

NONE

(E) Was the corner reestablished through lost corner proportionate methods? If so, show the method, including the directions and distances to other public land survey corners used as evidence or used for proportioning the corner location.

NO

I, **Donald Barnes**, hereby certify that the corner location as identified by the corner code index was determined by me under my direction and control and that this U.S. Public Land Survey Monument Record is correct and complete to the best of my knowledge and belief.

Seal

SHEET 2 OF 3

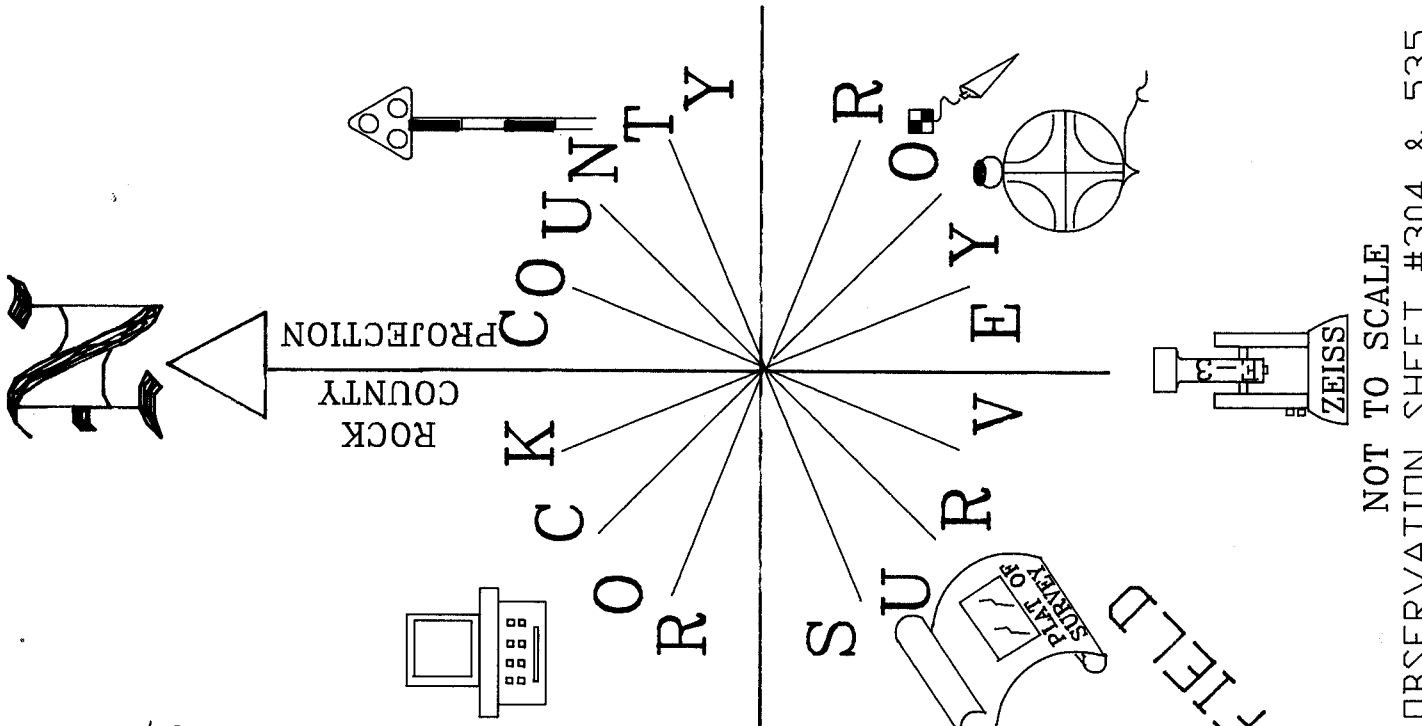
Emboss

Donald Barnes
June 13, 2006

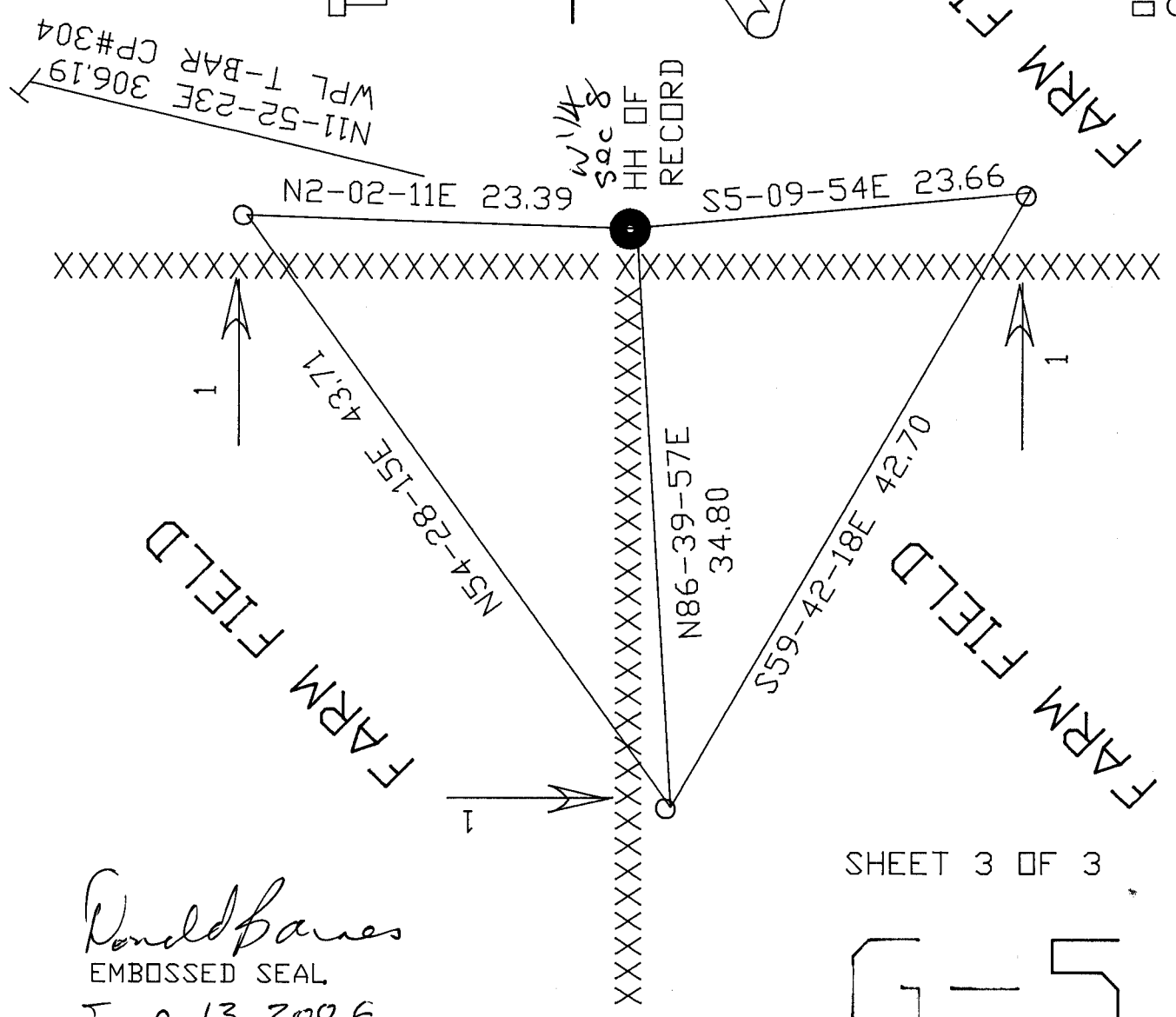
CORNER CODE

G-5

A.E. 7.08 REQUIREMENT



NOT TO SCALE
 OBSERVATION SHEET #304 & 535
 O 3/4X24 REDD/PLASTIC CAP



Donald Barnes
 EMBOSSED SEAL
 June 13 2006

SHEET 3 OF 3
 G-5