

# U.S. PUBLIC LAND SURVEY MONUMENT RECORD

For Public Land Survey Corners In:  
T. A N. R. 12 E. 4th P.M.  
CORNER CODE INDEX

WI ADMINISTRATIVE CODE A-E 7.08 REQUIREMENT  
REV 10/23/2004 USMONREC.DWG

	1	2	3	4	5	6	7	8	9	10	11	12	13	14	15	16	17	18	19	20	21	22	23	24	25		
A																											A
B																											B
C																											C
D																											D
E																											E
F																											F
G																											G
H																											H
J																											J
K																											K
L																											L
M																											M
N																											N
O																											O
P																											P
Q																											Q
R																											R
S																											S
T																											T
U																											U
V																											V
W																											W
X																											X
Y																											Y
Z																											Z

FULTON TWP  
ROCK COUNTY WI

IF AVAILABLE  
ROCK COUNTY COORDINATES PREFERRED

North \_\_\_\_\_ Elev. \_\_\_\_\_

East \_\_\_\_\_

Hor. Datum \_\_\_\_\_ Vert. Datum \_\_\_\_\_

LATITUDE \_\_\_\_\_ ELLIPS. HT. \_\_\_\_\_

LONGITUDE \_\_\_\_\_

NAD83(91) \_\_\_\_\_ NETWORK ADJ. YR \_\_\_\_\_

GPS (X) \_\_\_\_\_ TRAVERSE (X) \_\_\_\_\_

BASED ON THE FOLLOWING CONTROL:  
\_\_\_\_\_

◆ CORNER MONUMENT

○ WITNESS MONUMENT

BEARINGS ARE BASED ON: \_\_\_\_\_

FIELD BOOK \_\_\_\_\_ PAGE # \_\_\_\_\_

SHEET 1 OF 3

SHOW A PLAN VIEW DRAWING DEPICTING THE CORNER MONUMENT AND SURROUNDING PHYSICAL FEATURES, INCLUDING THE EXCAVATION AREA AND DEPTH.

PLANNING & ZONING COMMITTEE ADOPTED THIS FORM ON 12/2/1982

CORNER CODE R-15

FU588 ^

(B) Describe any record evidence, monument evidence, occupational evidence, testimonial evidence or any other material evidence you considered, and whether the monument was found or placed.

- 1836 (AUG) BURNHAM EAST RANDOM BETWEEN SECS 22 & 27  
5287.26 INT EAST BOUNDARY 36.96' N GOOD 2<sup>ND</sup> RATE W &  
BUR OAK OPENINGS BROKEN  
WEST CORRECTED BETWN SECS 22 & 27  
NO STATIONS  
2643.30 SET 1/4 SEC POST BUR OAK 14 S3E 528'? NO OTHER  
BEARING  
5058.9 BUR OAK 12 IN DIA  
5287.26 TO CORNERS
- 1858 CHURH VOL 1 PG 77 CALLS FOR BUT STATES NOTHING ABOUT MON.  
VAR 7 1/2 2645.94 TO SW COR SEC 22, VAR 7 2623.50 TO CEN  
SEC 22, & VAR 7 5247 TO N 1/4 COR SEC 22
- 1861 RUGER VOL 1 PG 154 TOOK NEW WITNESS TREE 9" OAK 17 N71 3/4E  
56.43', VAR 7-04 2627.79 TO CEN SEC 22, 5255.58 TO N 1/4 COR  
SEC 22
- 1867 LOCKE VOL 1 PG 282 FD BT & STAKE. 2640 TO NW COR SEC 27,  
2644.95 TO CEN SEC 27, 5289.90 TO S 1/4 COR SEC 27
- 1972 LEE VOL 4 PG 576 SET C.I. MON. SOUTH SIDE OF FENCE INT.  
EAST 1330 TO N/S FENCE LINE & 2660 TO SE COR SEC 22.
- 1974 SCHROEDER #1404 1987 SCHROEDER #12843 CALLS FOR  
COR BUT STATES NOTHING ABOUT MON. ANGLE 91-34-XX @  
NW COR SEC 27 FROM N 1/4 COR SEC 27 TO W 1/4 COR SEC 27.
- 1974 LEE VOL 5 PG 20 CI MON. VOL 4 PG 576 2653.18 TO NE COR  
SEC 27, 2627.96 TO NW COR SEC 27, 5300.19 TO S 1/4 COR  
SEC 27, ANGLE 90-30-33 @ N 1/4 COR SEC 27 FROM NE COR  
SEC 27 TO S 1/4 COR SEC 27, & ANGLE 88-46-34 @ N 1/4 COR  
SEC 27 FROM S 1/4 COR SEC 27 TO NW COR SEC 27.
- 1975 NORTHROP CSM VOL 5 PG 18 C.I. ANGLE 89-12-53 @ CEN OF  
SEC 27 FROM N 1/4 COR SEC 27 TO E 1/4 COR SEC 27
- 1976 WOODMAN "TOCOHO TIMBERS" BK 28 PG 12 ANGLE 89-13-03  
@ CEN SEC 27 FROM N 1/4 COR SEC 27 TO S 1/16<sup>TH</sup> COR OF NE  
1/4 SEC 27
- 1977 SCHROEDER #1324 CALLS FOR CALLS FOR STATES NOTHING  
ABOUT MON. 2628.00 TO SW COR SEC 22, ANGLE OF 90-19-  
43 @ S 1/4 COR SEC 22 FROM SW COR SEC 22 TO N/S 1/4 LINE  
SEC 22
- 1980 WOODMAN CSM VOL 10 PG 119 C.I.  
1988 WOODMAN CSM VOL 21 PG 70 C.I.  
1990 SCHROEDER CSM VOL 14 PG 215 STATES NOTHING ABOUT  
MON.

FD CI. MON ON WEST SIDE OF N/S FENCE AND SOUTH OF E/W FENCE.  
PLACED CARSONITE POST NEXT TO MON.

C) Was the corner restored through acceptance of (1) an obliterated evidence location, or, (2) a found perpetuated location?

ACCEPTED FD C.I. MON.

SHEET 1 OF 3  
CORNER CODE R-15

Dodd Barnes  
1/23/07

FU588

*D) Describe any material discrepancy between the location of the corner as restored or reestablished and the location of that corner as previously restored or reestablished by distance and direction. Show the discrepancy on the plan view drawing under (a), above. Show the distances between the corner as previously restored or reestablished and (1) the corner as restored or reestablished, and (2) to at least 4 of the witness monuments shown on the drawing in (a), above.*

NO

*(E) Was the corner reestablished through lost corner proportionate methods? If so, show the method, including the directions and distances to other public land survey corners used as evidence or used for proportioning the corner location.*

NO

I, **Donald Barnes**, hereby certify that the corner location as identified by the corner code index was determined by me under my direction and control and that this U.S. Public Land Survey Monument Record is correct and complete to the best of my knowledge and belief.

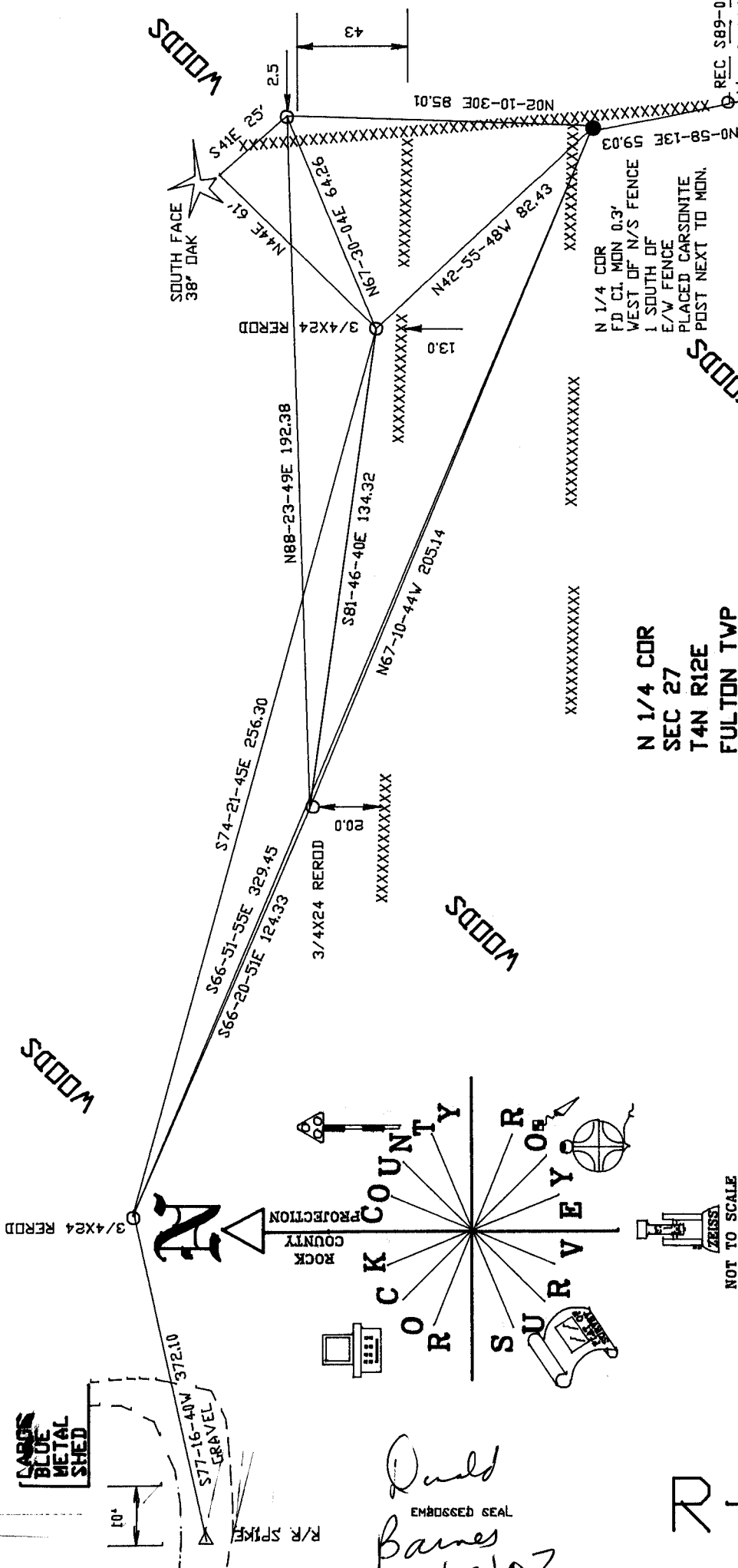
Seal  
*Donald Barnes*  
Emboss  
1/23/07

SHEET 2 OF 3

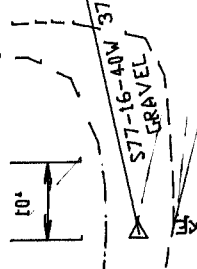
CORNER CODE

**R-15**

A.E. 7.08 REQUIREMENT



LARGE BLUE METAL SHED



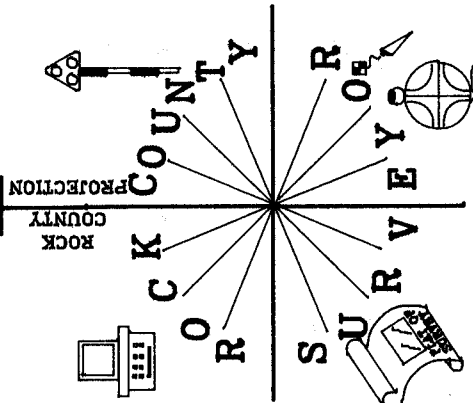
*Quaid*  
 BAMES  
 1/23/07

EMBOSSSED SEAL

N 1/4 COR  
 SEC 27  
 T4N R12E  
 FULTON TWP

N 1/4 COR  
 FD CL MON 0.3'  
 WEST OF N/S FENCE  
 1 SOUTH OF  
 E/W FENCE  
 PLACED CARBONITE  
 POST NEXT TO MON.

REC NO-58-13E 59.03  
 REC NO-10-30E 95.01  
 REC S89-01-47E 805.00  
 TCCOHO TIMBERS  
 BK 28 PG 12  
 LOT 7  
 WOODS



NOT TO SCALE  
 OBSERVATION SHEET #1157