

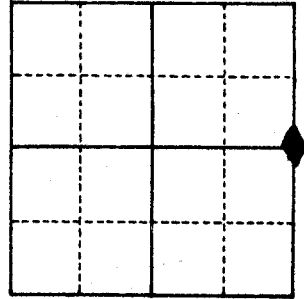
# U.S. PUBLIC LAND SURVEY MONUMENT RECORD

For Public Land Survey Corners in  
FULTON TWP. T. 4 N., R. 12 E.

For Miscellaneous Corners within  
 Sec. 19, T. 4 N., R. 12 E.

## CORNER CODE INDEX

	1	2	3	4	5	6	7	8	9	10	11	12	13	14	15	16	17	18	19	20	21	22	23	24	25
A																									
B																									
C	6																								
D		5																							
E			4																						
F				3																					
G					2																				
H																									
J																									
K																									
L																									
M	18																								
N		17																							
O			16																						
P				15																					
Q					14																				
R						13																			
S							12																		
T								11																	
U									10																
V										9															
W											8														
X												7													
Y													6												
Z														5											
															4										
																3									
																	2								
																		1							



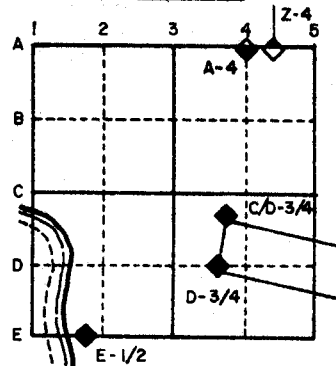
1. Above code numbers are positioned Meander, Claim, or Fractional corners of the section.
2. Township corner code numbers shall be applied to the corners of above typical section.

PLACE MONUMENT SYMBOL (◆) AT PROPER LOCATION ON ABOVE INDEX

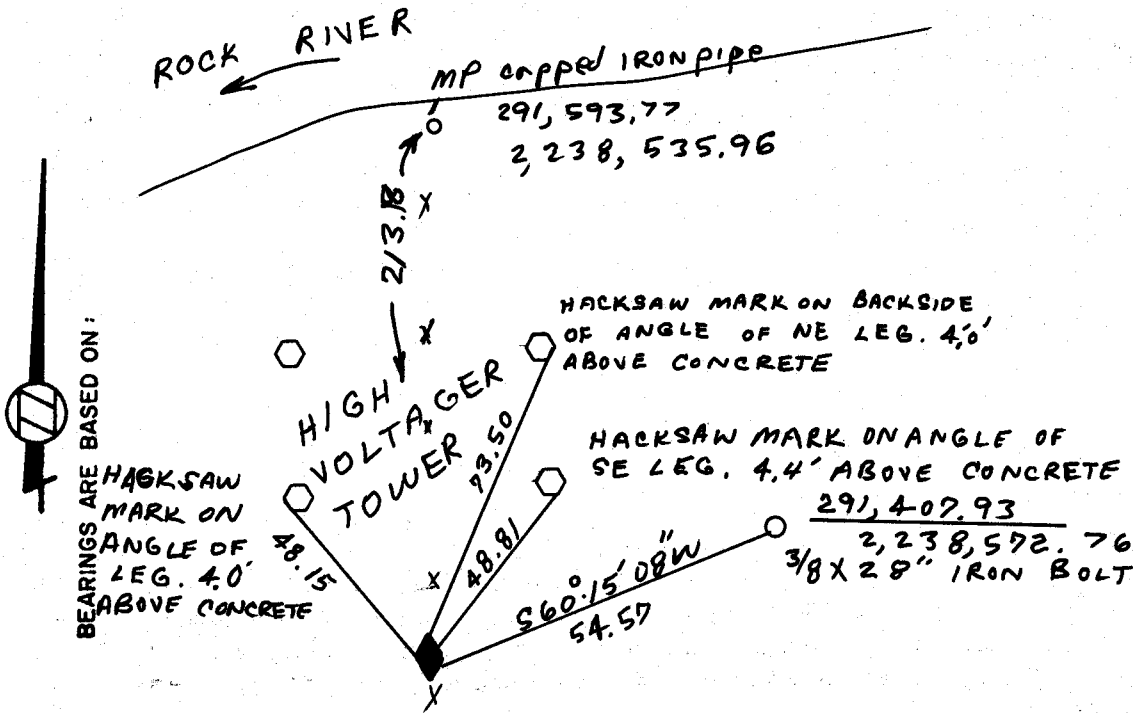
IF AVAILABLE  
 STATE PLANE COORDINATES

North (Y) 291,380.85 Eleve. (Z) \_\_\_\_\_  
 East (X) 2,238,525.38 Zone \_\_\_\_\_  
 Hor. Datum \_\_\_\_\_ Vert. Datum \_\_\_\_\_

### EXAMPLE



(a)  CORNER MONUMENT  WITNESS MONUMENT



DUG 1'x1' HOLE & FOUND NOTHING  
 SET Poly MONUMENT

FIELD BOOK \_\_\_\_\_ PAGE # 41

**MICROFILMED**

SHOW A PLAN VIEW DRAWING DEPICTING THE CORNER MONUMENT AND SURROUNDING PHYSICAL FEATURES, INCLUDING THE EXCAVATION AREA AND DEPTH. THE CORNER MONUMENT SHALL HAVE THE FOLLOWING CHARACTERISTICS: 1) HAVE AT LEAST TWO PREDETERMINED BREAK-OFF POINTS. 2) IF BROKEN, LEAVE A PERMANENTLY MAGNETIZED REMNANT AT THE ORIGINAL POINT. 3) MUST BE EXTENDABLE. 4) THE CAP IS INSCRIBED: ROCK COUNTY SURVEY MONUMENT - PENALTY FOR DISTURBING MARKER. 5) OR AN EXISTING CUT LIMESTONE. AN IRON PIPE 1 1/2" x 4" (MINIMUM) MAY BE USED IN AREAS WHERE GROUND WATER IS WITHIN ONE FOOT OF THE SURFACE. IF THE CORNER IS OCCUPIED BY AN IMPROVEMENT (MANHOLE, BURIED CABLE, ETC.) ANY DURABLE, DISTINCT MONUMENT MAY BE USED. CORNERS SHALL BE REFERENCED WITH AT LEAST 4 DURABLE WITNESS MONUMENTS. WITNESS MONUMENTS SHALL BE MADE OF CONCRETE, NATURAL STONE, IRON OR OTHER EQUALLY DURABLE MATERIAL, EXCEPT WOOD. DESCRIBE THE CORNER AND THE WITNESS MONUMENTS.

CORNER CODE: P 5

(b.) Describe any record evidence, monument evidence, occupational evidence, testimonial evidence or any other material evidence you considered, and whether the monument was found or placed.

FOUND & ACCEPTED THE MP ON THE SOUTH SIDE OF THE RIVER. & THE SE CORNER OF SEC 19.

(c.) Was the corner restored through acceptance of (1) an obliterated evidence location, or, (2) a found perpetuated location?

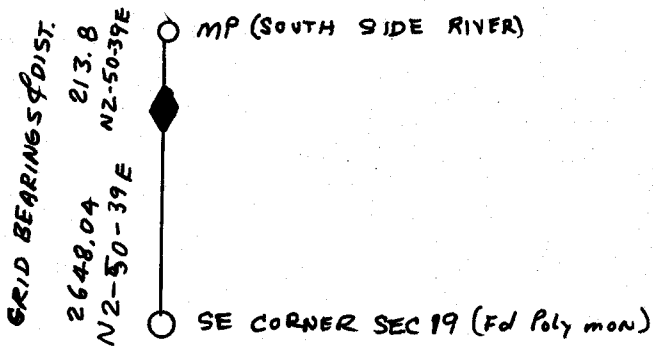
Neither

(d.) Describe any material discrepancy between the location of the corner as restored or reestablished and the location of that corner as previously restored or reestablished by distance and direction. Show the discrepancy on the plan view drawing under (a), above. Show the distances between the corner as previously restored or reestablished and (1) the corner as restored or reestablished, and (2) to at least 4 of the witness monuments shown on the drawing in (a), above.

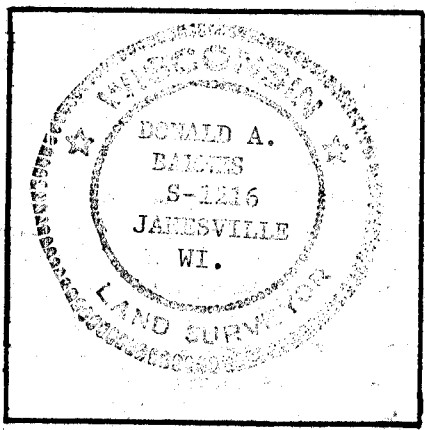
SEE FOLLOWING PAGES

(e.) Was the corner reestablished through lost corner proportionate methods? If so, show the method, including the directions and distances to other public land survey corners used as evidence or used for proportioning in determining the corner location.

THE CORNER WAS REESTABLISHED THROUGH LOST CORNER PROPORTIONATE METHODS.



I, Donald Barnes, hereby certify that the corner points as identified by the corner code index were, in a field survey on April 6, 1983, established, re-established, monumented, re-monumented, recovered or restored as expressed below and in conformance with the regulations and rules as required in the current manual of survey instructions of the United States Department of Interior, Bureau of Land Management.



COUNTY SURVEYOR FILING DATA

Date of Computer Entry \_\_\_\_\_

Date Received \_\_\_\_\_

Date Microfilmed OCT 15 1984

Treasurer's Receipt No. \_\_\_\_\_

Number of Included Sheets 1

AFFIX YOUR LAND SURVEYOR SEAL. P5

# U.S. PUBLIC LAND SURVEY MONUMENT RECORD

For Public Land Survey Corners in the  
T. 4 N., R. 12 E.

## CORNER CODE INDEX

	1	2	3	4	5	6	7	8	9	10	11	12	13	14	15	16	17	18	19	20	21	22	23	24	25
A																									
B																									
C																									
D																									
E																									
F																									
G																									
H																									
J																									
K																									
L																									
M																									
N																									
O																									
P																									
Q																									
R																									
S																									
T																									
U																									
V																									
W																									
X																									
Y																									
Z																									

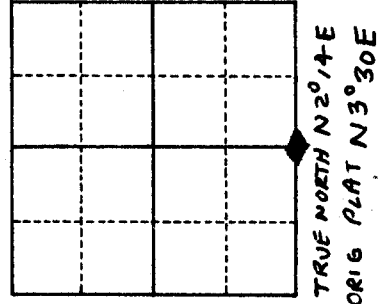
PLACE MONUMENT SYMBOL (◆) AT PROPER LOCATION ON ABOVE INDEX

IF AVAILABLE  
 STATE PLANE COORDINATES

North (Y) _____	Elev. (Z) _____
East (X) _____	Zone _____
Hor. Datum _____	Vert. Datum _____

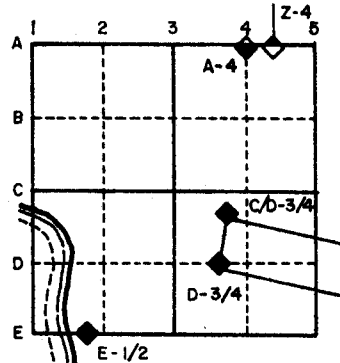
For Miscellaneous Corners within Sec.  
19, T. 4 N., R. 12 E.

*FULTON TWP*



1. Above code numbers are positioned Meander, Claim, or Fractional corners of the section.
2. Township corner code numbers shall be applied to the corners of above typical section.

**EXAMPLE**



THERE APPEARS TO BE A MAJOR DISCREPANCY WITH THE ORIGINAL GOVERNMENT FIELD NOTES. LEO W. HARRISON SURVEYED THE FRACTIONAL TOWNSHIPS FROM MARCH 31 TO APRIL 4 1834. IT WAS ACCEPTED AND APPROVED BY THE SURVEYOR GENERAL ON JULY 21, 1835. BURNHAM SURVEYED THE INTERIOR SECTIONS OF FULTON TOWNSHIP FROM JULY 10 TO AUGUST 5 1836. IT WAS ACCEPTED AND APPROVED BY THE SURVEYOR GENERAL IN 1837.

HARRISON'S FIELD NOTES SHOW THE FOLLOWING:

NORTH BETWEEN 19 & 20

51.67 LEAVE ROCK RIVER AND SET MEANDER POST ON RIGHT BANK OF SAME

WHITE 0 20 N73W 221  
 BURR 0 20 N4E 140

75.00 TRAIL NE

80.00 SET COR TO SEC 17, 18, 19, 20

"THEN HE STATED THE BTs & LAND CHARACTERISTICS"

NOTE: THE SE CORNER OF SECTION 19 & THE E 1/2 CORNER OF SEC 30 WAS NOT SET UNTIL AUG 2, 1836 BY BURHAM. HOW HARRISON ARRIVED AT LINE AND A DISTANCE OF 51.67 IS UNEXPLAINABLE.

SEE FOLLOWING PAGE

MICROFILMED

SHEET 2 OF 2

CORNER CODE: p-5

ON AUGUST 2, 1836 BURHAM SET THE E 1/4 CORNER OF SECTION 30 AND THE SE CORNER OF SEC 19. HIS FIELD NOTES STATE THE FOLLOWING:

NORTH BETWEEN SEC 19 & 20

- 42.00 TRAIL NE & SW
  - 43.00 TO LEFT BANK OF ROCK RIVER
  - 52.68 INT RIGHT BANK 3.20 L W OF MP
- FIRST RATE W, Y, BURR OAK OPENINGS

SOUTH CORRECTED BETWEEN 20 & 19

- 9.45 SET MP ON LEFT BANK
  - BURR OAK 18 S65W .25
  - W OAK 16 S51E 1.26
  - 12.68 SET 1/4 POST
  - Y OAK 12N32 1/2 E 25
  - DO 12S25W 38
- TO CORNERS

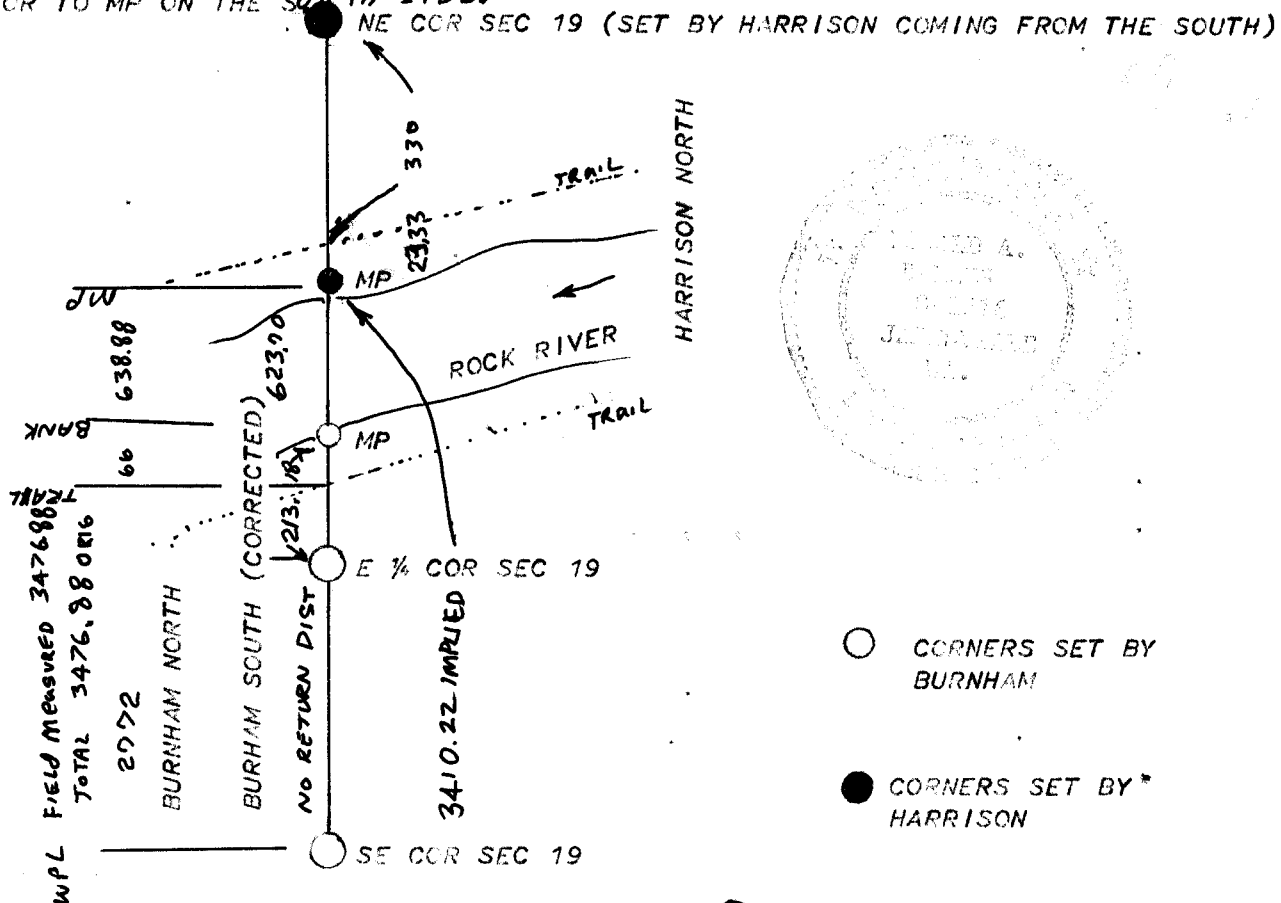
BURHAM'S NOTES INDICATES HE NEVER WENT TO THE NE CORNER OF SECTION 19 OR CLOSED & MEASURED BACK TO THE SE CORNER OF SECTION 19.

THE DISTANCE FROM THE SE CORNER OF SECTION 19 TO THE MP ON THE RIGHT BANK IS AS FOLLOWS:

HARRISON (1834)	51.67
BURNHAM (1836)	52.68
DIFFERENCE	1.01 (66.66')

SINCE THE E 1/4 CORNER OF SECTION 19 WAS SET BY ONLY BURNHAM I USED HIS FIELD NOTE DISTANCES FOR PRORATION.

THE ORIGINAL PLAT BOOK SHOWS N3°30'E 2838' WHEREAS THE FIELD NOTES SHOW 2853.19 FROM THE SE COR TO MP ON THE SOUTH SIDE.



MICROFILMED