

U.S. PUBLIC LAND SURVEY MONUMENT RECORD

For Public Land Survey Corners In:
T. 4 N. R. 12 E. 4th P.M.
CORNER CODE INDEX

WI ADMINISTRATIVE CODE A-E 7.08 REQUIREMENT
REV 10/23/2004 USMONREC.DWG

	1	2	3	4	5	6	7	8	9	10	11	12	13	14	15	16	17	18	19	20	21	22	23	24	25		
A																											A
B																											B
C																											C
D																											D
E																											E
F																											F
G																											G
H																											H
J																											J
K																											K
L																											L
M																											M
N																											N
O																											O
P																											P
Q																											Q
R																											R
S																											S
T																											T
U																											U
V																											V
W																											W
X																											X
Y																											Y
Z																											Z

FULTON TWP
ROCK COUNTY WI

IF AVAILABLE
ROCK COUNTY COORDINATES PREFERRED

North _____ Elev. _____

East _____

Hor. Datum _____ Vert. Datum _____

LATITUDE _____ ELLIPS. HT. _____

LONGITUDE _____

NAD83(91) _____ NETWORK ADJ. YR _____

GPS (X) _____ TRAVERSE (X) _____

BASED ON THE FOLLOWING CONTROL:

PLACE MONUMENT SYMBOL AT PROPER LOCATION ON ABOVE INDEX

CORNER MONUMENT WITNESS MONUMENT

BEARINGS ARE BASED ON: _____

FIELD BOOK _____ PAGE # _____

SHEET 1 OF 2

SHOW A PLAN VIEW DRAWING DEPICTING THE CORNER MONUMENT AND SURROUNDING PHYSICAL FEATURES, INCLUDING THE EXCAVATION AREA AND DEPTH.

PLANNING & ZONING COMMITTEE ADOPTED THIS FORM ON 12/2/1982

CORNER CODE 0-5

FU_M.P.648

(B) Describe any record evidence, monument evidence, occupational evidence, testimonial evidence or any other material evidence you considered, and whether the monument was found or placed.

1834 (MAR/APR) HARRISON NORTH BETWEEN SECS 19 & 20
3410.22 LEAVE ROCK RIVER AND SET MEANDER POST ON
RIGHT BANK OF SAME. {WHITE O 20 N73W 145.86'
BURR O 20 N4E 92.4'
4950 TRAIL N.E.
5280 SET COR TO SECS 17 18 19 20
RED O 18 S78W 33' BURR O 8 S30E 36.3' RED O 12
N86E 33' BURR O 10 N14W 44.88' LAND ROLLING
2ND RATE TIMBER RED O & BURR O ? GRASS &
WEEDS
1836 (AUG 2) BURNHAM NORTH BETWEEN SECS 19 & 20
2772 TRAIL @ NE & SW
2838 TO LEFT BANK OF ROCK RIVER
3476.88 INT. RIGHT BANK 213.84'? ?W. OF THE M.P. FIRST
RATE W, Y, & BUR OAK OPENINGS
SOUTH CORRECTED BETWN SECS 20 & 19
623.7 SET MP ON LEFT BANK BUR OAK 18 S65W 16.5' W
OAK 16 S51E 83.16'
836.88 SET 1/4 SEC POST Y OAK 12 N32 1/2E 16.5' Y OAK
12 S25W 25.08'
TO CORNERS AUG. 2 1836
1960 BATTERMAN VOL 4 PG 13 FD STONE AT MP. REPLACED WITH
CONC. MON. 1852.06 TO NE COR SEC 19, ANGLE 89-53 @ NE
COR SEC 19 FROM MP TO N 1/4 COR SEC 19
1960 BATTERMAN #1293 FD POINTED STONE. RESET WITH CONC.
MON
1961 ELY #1297 & 1307 CONC. 1856.06 TO NW COR SEC 20
1971 LEE VOL 4 PG 536 CONC. MON. MEANDER 292,263.48;
2,238,545.00 WP&L
1975 WPL #1295 & VOL 6 PG 301 290,263.48; 2,238,545.00 NO-
47-33W 1851.91 TO NE COR SEC 19, SO-49-18W 671.57 TO
M.C.

FD CONC. MONUMENT WITH CARSON INT. 1.5' ABOVE GROUND.

C) Was the corner restored through acceptance of (1) an obliterated evidence location, or, (2) a found perpetuated location?

ACCEPTED FD PERPETUATED LOCATION

D) Describe any material discrepancy between the location of the corner as restored or reestablished and the location of that corner as previously restored or reestablished by distance and direction. Show the discrepancy on the plan view drawing under (a), above. Show the distances between the corner as previously restored or reestablished and (1) the corner as restored or reestablished, and (2) to at least 4 of the witness monuments shown on the drawing in (a), above.

NONE

(E) Was the corner reestablished through lost corner proportionate methods? If so, show the method, including the directions and distances to other public land survey corners used as evidence or used for proportioning the corner location.

MP

I, Donald Barnes, hereby certify that the corner location as identified by the corner code index was determined by me under my direction and control and that this U.S. Public Land Survey Monument Record is correct and complete to the best of my knowledge and belief.

Seal

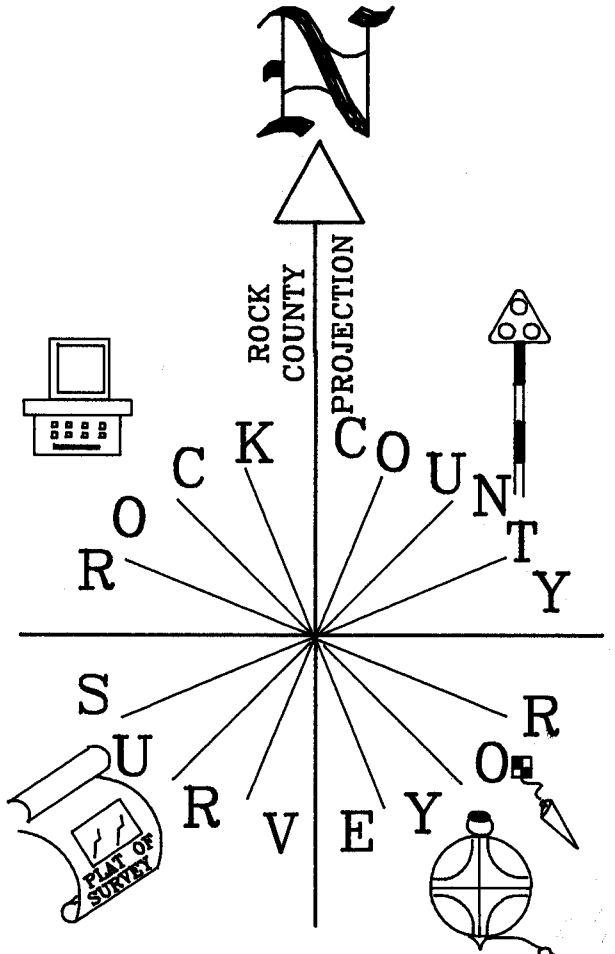
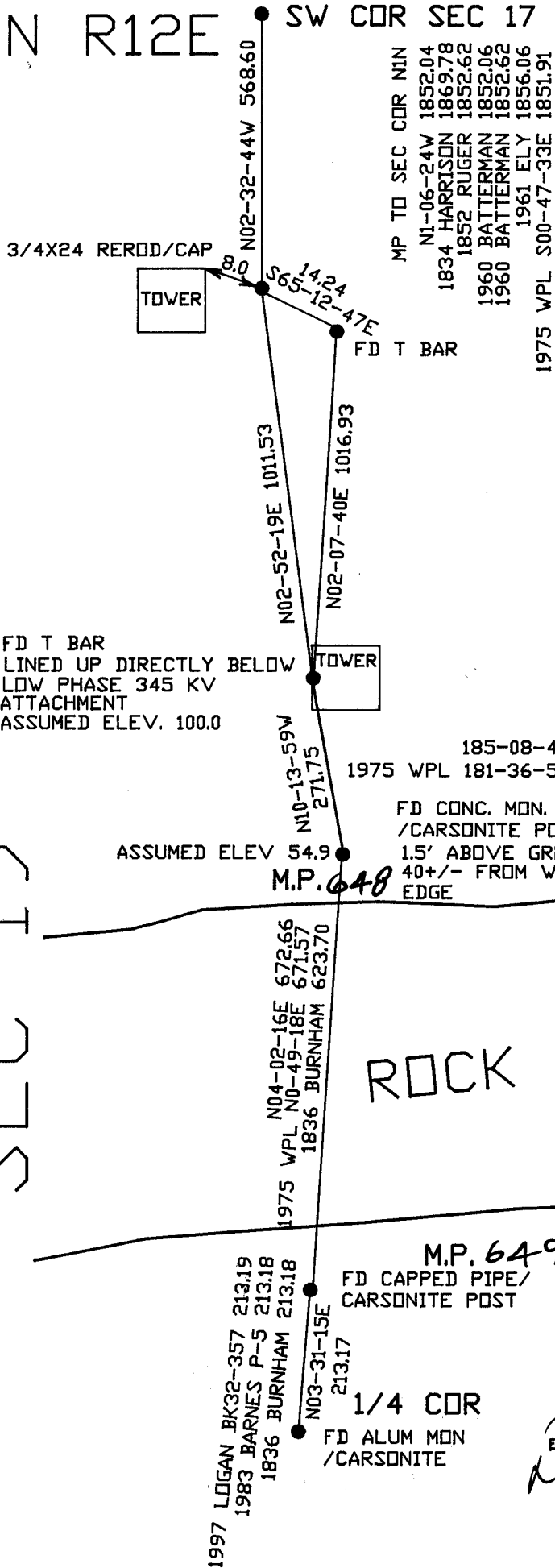
Donald Barnes

SHEET 1 OF 2

3/22/06

CORNER CODE **0-5**

FULTON TWP CTH M
T4N R12E SW COR SEC 17



NOT TO SCALE

OBSERVATION SHEET #212

SEC 19

ROCK RIVER

SEC 20

EMBOSSED SEAL
Donald Barnes
SHEET 2 OF 2

3/22/06

0-5