

Paper weight-110# (minimum)

Black nonfading ink required

# U.S. PUBLIC LAND SURVEY MONUMENT RECORD

For Public Land Survey Corners In:

WI ADMINISTRATIVE CODE A-E 7.08 REQUIREMENT

T. 4 N. R. 12 E. 4th P.M.

REV 10/23/2004

USMONREC.DWG

CORNER CODE INDEX

FULTON TWP  
ROCK COUNTY WI

IF AVAILABLE  
ROCK COUNTY COORDINATES PREFERRED

North \_\_\_\_\_ Elev. \_\_\_\_\_

East \_\_\_\_\_

Hor. Datum \_\_\_\_\_ Vert. Datum \_\_\_\_\_

LATITUDE \_\_\_\_\_ ELLIPS. HT. \_\_\_\_\_

LONGITUDE \_\_\_\_\_

NAD83(91) \_\_\_\_\_ NETWORK ADJ. YR \_\_\_\_\_

GPS (X) \_\_\_\_\_ TRAVERSE (X) \_\_\_\_\_

BASED ON THE FOLLOWING CONTROL:

|   |   |   |   |   |   |   |   |   |   |    |    |    |    |    |    |    |    |    |    |    |    |    |    |    |    |  |   |
|---|---|---|---|---|---|---|---|---|---|----|----|----|----|----|----|----|----|----|----|----|----|----|----|----|----|--|---|
|   | 1 | 2 | 3 | 4 | 5 | 6 | 7 | 8 | 9 | 10 | 11 | 12 | 13 | 14 | 15 | 16 | 17 | 18 | 19 | 20 | 21 | 22 | 23 | 24 | 25 |  |   |
| A |   |   |   |   |   |   |   |   |   |    |    |    |    |    |    |    |    |    |    |    |    |    |    |    |    |  | A |
| B |   |   |   |   |   |   |   |   |   |    |    |    |    |    |    |    |    |    |    |    |    |    |    |    |    |  | B |
| C |   |   |   |   |   |   |   |   |   |    |    |    |    |    |    |    |    |    |    |    |    |    |    |    |    |  | C |
| D |   |   |   |   |   |   |   |   |   |    |    |    |    |    |    |    |    |    |    |    |    |    |    |    |    |  | D |
| E |   |   |   |   |   |   |   |   |   |    |    |    |    |    |    |    |    |    |    |    |    |    |    |    |    |  | E |
| F |   |   |   |   |   |   |   |   |   |    |    |    |    |    |    |    |    |    |    |    |    |    |    |    |    |  | F |
| G |   |   |   |   |   |   |   |   |   |    |    |    |    |    |    |    |    |    |    |    |    |    |    |    |    |  | G |
| H |   |   |   |   |   |   |   |   |   |    |    |    |    |    |    |    |    |    |    |    |    |    |    |    |    |  | H |
| J |   |   |   |   |   |   |   |   |   |    |    |    |    |    |    |    |    |    |    |    |    |    |    |    |    |  | J |
| K |   |   |   |   |   |   |   |   |   |    |    |    |    |    |    |    |    |    |    |    |    |    |    |    |    |  | K |
| L |   |   |   |   |   |   |   |   |   |    |    |    |    |    |    |    |    |    |    |    |    |    |    |    |    |  | L |
| M |   |   |   |   |   |   |   |   |   |    |    |    |    |    |    |    |    |    |    |    |    |    |    |    |    |  | M |
| N |   |   |   |   |   |   |   |   |   |    |    |    |    |    |    |    |    |    |    |    |    |    |    |    |    |  | N |
| O |   |   |   |   |   |   |   |   |   |    |    |    |    |    |    |    |    |    |    |    |    |    |    |    |    |  | O |
| P |   |   |   |   |   |   |   |   |   |    |    |    |    |    |    |    |    |    |    |    |    |    |    |    |    |  | P |
| Q |   |   |   |   |   |   |   |   |   |    |    |    |    |    |    |    |    |    |    |    |    |    |    |    |    |  | Q |
| R |   |   |   |   |   |   |   |   |   |    |    |    |    |    |    |    |    |    |    |    |    |    |    |    |    |  | R |
| S |   |   |   |   |   |   |   |   |   |    |    |    |    |    |    |    |    |    |    |    |    |    |    |    |    |  | S |
| T |   |   |   |   |   |   |   |   |   |    |    |    |    |    |    |    |    |    |    |    |    |    |    |    |    |  | T |
| U |   |   |   |   |   |   |   |   |   |    |    |    |    |    |    |    |    |    |    |    |    |    |    |    |    |  | U |
| V |   |   |   |   |   |   |   |   |   |    |    |    |    |    |    |    |    |    |    |    |    |    |    |    |    |  | V |
| W |   |   |   |   |   |   |   |   |   |    |    |    |    |    |    |    |    |    |    |    |    |    |    |    |    |  | W |
| X |   |   |   |   |   |   |   |   |   |    |    |    |    |    |    |    |    |    |    |    |    |    |    |    |    |  | X |
| Y |   |   |   |   |   |   |   |   |   |    |    |    |    |    |    |    |    |    |    |    |    |    |    |    |    |  | Y |
| Z |   |   |   |   |   |   |   |   |   |    |    |    |    |    |    |    |    |    |    |    |    |    |    |    |    |  | Z |

PLACE MONUMENT SYMBOL  AT PROPER LOCATION ON ABOVE INDEX

CORNER MONUMENT

WITNESS MONUMENT

BEARINGS ARE BASED ON: \_\_\_\_\_

FIELD BOOK \_\_\_\_\_ PAGE # \_\_\_\_\_

SHEET 1 OF 4

SHOW A PLAN VIEW DRAWING DEPICTING THE CORNER MONUMENT AND SURROUNDING PHYSICAL FEATURES, INCLUDING THE EXCAVATION AREA AND DEPTH.

PLANNING & ZONING COMMITTEE ADOPTED THIS FORM ON 12/2/1982

CORNER CODE N-5

FU563^

(B) Describe any record evidence, monument evidence, occupational evidence, testimonial evidence or any other material evidence you considered, and whether the monument was found or placed.

- 1834 (MAR/APR) HARRISON NORTH BETWEEN SECS 19 & 20  
3410.22 LEAVE ROCK RIVER AND SET MEANDER POST ON  
RIGHT BANK OF SAME. {WHITE O 20 N73W 145.86'  
BURR O 20 N4E 92.4'  
4950 TRAIL N.E.  
5280 SET COR TO SECS 17, 18, 19, 20  
RED O 18 S78W 33' BURR O 8 S30E 36.3' RED O 12  
N86E 33' BURR O 10 N14W 44.88' LAND ROLLING  
2<sup>ND</sup> RATE TIMBER RED O & BURR O ? GRASS &  
WEEDS
- 1834 (APR) HARRISON WEST ON RANDOM BET 18 & 19  
1773.42 ROAD N.E.  
2467.08 TRAIL N  
2640 TEMPY 1/4 SEC COR & ENTER BOTTOM OF CREEK  
3729 INT. LEFT BANK OF CATFISH CREEK SET GUIDE P  
3861 LEAVE SAME SET GUIDE P & LEAVE BOTTOM  
4712.4 TRAIL N.E.  
5295.84 INT. WEST BDY 11.88' N OF P  
LAND & SAME AS BEFORE  
COR EAST BET 18 & 19  
1419 SET MEAN POST RIGHT BANK OF CATFISH {BURR O  
12 S44W 143.88' RED O 8 N20W 126.72'  
1551 LEAVE SAME SET MEAND P. ON LEFT BANK {BURR O  
18 S45E 143.88'  
2655.84 QUARTER SEC. CORNER {BUR O 8 N9E 66' BURR O  
12 S72E 126.72'  
5295.84 INT. SEC COR.
- 1834 (MAR/APR) HARRISON NORTH BETWEEN SECS 17 & 18  
858 ROAD NE  
1987.92 BURR O 8 IN DIAM  
2383.92 BURR O 12  
2640 QUARTER SEC COR. {BURR O 18 N42E 62.7' BURR O  
10 N57W 9.9'  
3541.56 BURR O 12  
4983 ENTER PRAIRIE  
5280 COR TO SEC S 7,8,17,18 {BURR O 20 S52W 271.26'  
BURR O 18 S15E (NO DIST)  
LAND ROLLING 2<sup>ND</sup> RATE TIMBER BURR & RED O
- 1834 (MAR/APR) HARRISON EAST ON RANDOM BET. 17 & 20 PG 24  
369.6 TRAIL N.E.  
2640 TEMPY 1/4 SEC COR.  
5291.88 INT. E. BOUNDARY 13.2' N. O POST LAND ROLLING  
2<sup>ND</sup> RATE TIMBER RED BURR & WHITE OAK. GRASS &  
WEEDS  
WEST COR. WEST BET. 17 & 20  
2645.94 QUARTER SEC. COIR. {RED OAK 12 N35W 11.88'  
RED OAK 18 S70E 15.18'} {RED OAK 12 RED OAK  
1} MARKED  
5291.88 SEC COR
- 1836 (AUG 2) BURNHAM NORTH BETWEEN SECS 19 & 20  
2772 TRAIL @ NE & SW  
2838 TO LEFT BANK OF ROCK RIVER  
3476.88 INT. RIGHT BANK 213.84'? ?W. OF THE M.P. FIRST  
RATE W, Y, & BUR OAK OPENINGS  
SOUTH CORRECTED BETWN SECS 20 & 19  
623.7 SET MP ON LEFT BANK BUR OAK 18 S65W 16.5' W  
OAK 16 S51E 83.16'  
836.88 SET 1/4 SEC POST Y OAK 12 N32 1/2E 16.5' Y OAK  
12 S25W 25.08'  
TO CORNERS AUG. 2 1836

SHEET 1 OF 4  
CORNER CODE N-5

Donald  
Barnes  
11/07/07

FU563

- 1886 RUGER VOL 2 PG 275 FD ROOTS OF NE BT SET IN PLACE OF OLD STUMP LIMESTONE 10X6 1/2X6. ALSO FD REMAINS OF SE BT SET IN ITS PLACE TWO LIMESTONES ONE ON TOP OF THE OTHER. ALSO FD STUMP OF NW BT. AT NW COR SET LIMESTONE 22X10X7 2637.69 TO N 1/4 COR SEC 20, VAR 6-12 1852.62' TO MP
- 1940 SUNNY VOL 3 PG 460 DUG 6'X6' HOLE 2' DEEP FD NOTHING. ON LINE WITH N/S FENCE ON NORTH SIDE OF RD.
- 1950 DOT CTH M #655 STATES NOTHING ABOUT MON.
- 1960 BATTERMAN VOL 4 PG 13 SET RR & REF SAME. 5298.44 TO FD PIPE AT NE COR SEC 18. 294,115.21; 2,238,519.39 WPL, 1852.06 TO FD STONE AT MP ON NORTH SIDE OF ROCK RIVER, 1319.30 TO N 1/16<sup>TH</sup> COR OF NE 1/4 SEC 19, 2638.6 TO N 1/4 COR SEC 19
- 1960 BATTERMAN #1293 SET R/R SPIKE & SET TIES TO PIPES. 2638.60 TO N 1/4 COR SEC 19, 5298.44 TO NE COR SEC 18, 5287.08 TO NE COR SEC 20, & 1852.62 TO MP ON RIGHT BANK OF RIVER
- 1960 ELY #1296 CALLS FOR COR BUT STATES NOTHING ABOUT IT., 1319.30 EAST OF STEEL SPIKE
- 1961 ELY #1297 & 1307 R/R SPIKE S89-19E 2643.60 TO N 1/4 COR SEC 20, S0-13W 1856.06 TO CONC. MON. @ MP, S89-53W 1319.30 TO 1/16<sup>TH</sup> COR
- 1966 BATTERMAN VOL 4 PG 293 2638.6 TO N 1/4 COR SEC 19.
- 1970 BATTERMAN VOL 4 PG 467 R/R SPIKE. & REF. SAME. SHOWS CORNER IN CTH M.
- 1971 SCHROEDER CSM VOL 2 PG 65 STATES NOTHING ABOUT MON. 77.00' NORTH OF SEC COR IS SE COR OF LOT. LOT IS 320.00 WIDE & 680.70' DEEP
- 1971 LEE VOL 4 PG 536 & VOL 6 PG 301 294,115.21; 2,238,519.39 WPL
- 1973 LEE #1286 SET PIPE. 2638.60 TO S 1/4 COR SEC 18
- 1974 SCHROEDER CSM VOL 4 PG 114 STATES NOTHING ABOUT MON.
- 1975 WPL #1267 294,115.21; 2,238,519.39 N88-45-52E 2642.94 TO S 1/4 COR SEC 17, N0-50-36W 2632.66 TO W 1/4 COR SEC 17
- 1975 WPL #1287,1306 & 1267 294,115.21; 2,238,519.39 S88-09-49W 1319.32 TO S 1/16<sup>TH</sup> COR OF SE 1/4 OF SEC 18, S0-47-33E 1851.91 TO M.C., N88-45-52E 2642.94 TO N 1/4 COR SEC 20
- 1978 BARNES #1275 SHOWS RECORD DISTANCES.
- 1982 SCHROEDER #1277 STATES NOTHING ABOUT MON. 2648.70 TO E 1/4 COR SEC 18 & ANGLE 90-00-14 FROM S 1/4 COR SEC 18 TO E 1/4 COR SEC 18

SHEET 2 OF 4  
CORNER CODE N-5

*Ronald Barnes*  
11/07/07

FU563

FD 3/4" REROD. IS NOT IN HARMONY WITH TWO REFERENCE TIES TO THE NORTH & MP TO THE SOUTH. USED RECORD DISTANCE TO THE SOUTH MP, REFERENCE PIPES, & 1/16<sup>TH</sup> CORNER TO THE WEST. THE MEASURED AND RECORD DISTANCES FROM THE FD REROD TO THE FD PIPE @ SCHROEDER'S GSM ARE IN HARMONY WHICH INDICATES THAT SCHROEDER PROBABLY PLACED THE REROD FOR HIS 1971 GSM.

C) Was the corner restored through acceptance of (1) an obliterated evidence location, or, (2) a found perpetuated location?

CORNER WAS RESTORED THROUGH ACCEPTANCE OF OBLITERATED EVIDENCE LOCATION.

D) Describe any material discrepancy between the location of the corner as restored or reestablished and the location of that corner as previously restored or reestablished by distance and direction. Show the discrepancy on the plan view drawing under (a), above. Show the distances between the corner as previously restored or reestablished and (1) the corner as restored or reestablished, and (2) to at least 4 of the witness monuments shown on the drawing in (a), above.

THE OBLITERATED LOCATION IS S67-37-30E 0.29 OF THE FD REROD

(E) Was the corner reestablished through lost corner proportionate methods? If so, show the method, including the directions and distances to other public land survey corners used as evidence or used for proportioning the corner location.

NO

I, **Donald Barnes**, hereby certify that the corner location as identified by the corner code index was determined by me under my direction and control and that this U.S. Public Land Survey Monument Record is correct and complete to the best of my knowledge and belief.

Seal

Emboss

*Donald Barnes*

11/07/07

SHEET 3 OF 4

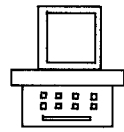
CORNER CODE **N-5**

A.E. 7.08 REQUIREMENT

SE COR  
SEC 18  
FULTON TWP



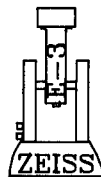
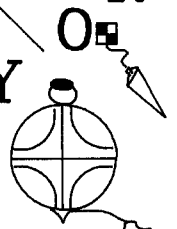
ROCK COUNTY PROJECTION



ROCK COUNTY



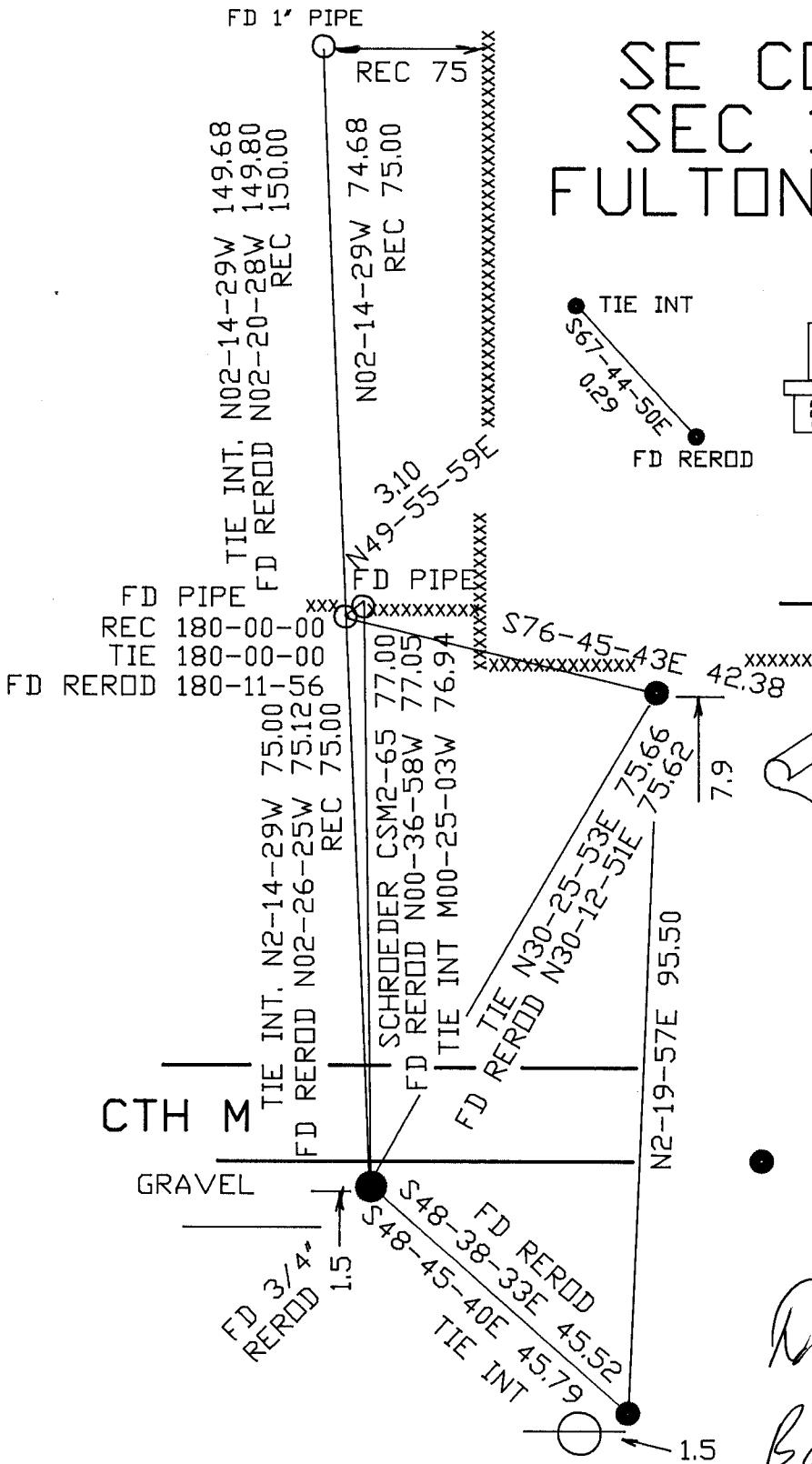
SURVEY



NOT TO SCALE

OBSERVATION SHEET #563

● SET 3/4X24" REROD/PLASTIC CAP



*Ronald Barnes*  
EMBOSSSED SEAL  
11/07/07

SHEET 4 OF 4

N-5