

FU555 ^

(B) Describe any record evidence, monument evidence, occupational evidence, testimonial evidence or any other material evidence you considered, and whether the monument was found or placed.

- 1834 (MAR/APR) HARRISON NORTH BETWEEN SECS 17 & 18
858 ROAD NE
1987.92 BURR O 8 IN DIAM
2383.92 BURR O 12
2640 QUARTER SEC COR. {BURR O 18 N42E 62.7' BURR O
10 N57W 9.9'
3541.56 BURR O 12
4983 ENTER PRAIRIE
5280 COR TO SEC S 7,8,17,18 {BURR O 20 S52W 271.26'
BURR O 18 S15E (NO DIST)
LAND ROLLING 2ND RATE TIMBER BURR & RED O
- 1882 LEE VOL 2 PG 371 CALLS FOR E/W & N/S FENCE 1328.58
NORTH TO E/W FENCE, 2002.44 WEST TO NORTHEASTERLY RD.
TO DETERMINE AREA OF PEASE ESTATE. A PLAT WAS
FURNISHED THE ADMINISTRATOR O.F. SAYRE
- 1973 LEE #1286 STATES NOTHING ABOUT MON. ON LINE WITH NE &
SE CORNERS SEC 18, 2648.71 TO NE & SE CORNERS SEC 18,
& 2642.20 TO CEN SEC 18, & 5330.02 TO W 1/4 COR SEC 18
- 1975 WPL #1287 296,747.58; 2,238,480.64 R.R. RAIL
- 1975 WPL #1267 296,747.58; 2,238,480.64 N1-08-25W 2665.55
TO NW COR SEC 17, S0-50-36E 2632.66 TO SW COR SEC 17
- 1977 WOODMAN CSM VOL 7 PG 147 FD RAILROAD TIE. 2665.56 TO
NE COR SEC 18
- 1978 BARNES #13772 STATES NOTHING ABOUT TYPE OF MON.
- 1978 BARNES #1275 SET ALUM
- 1978 BARNES VOL 5 PG 444 DUG & FD NOTHING. SET ALUM ON
LINE WITH THE SE & NE COR AT SINGLE PROPORTIONATE
DISTANCE. CSM VOL 2 PG 65 & VOL 3 PG 167 USED THE
CORNER BUT IT WAS NOT MONUMENTED. A PLAT OF SURVEY
BY LEE (1973) ALSO USED THIS COR. INFORMATION SUPPLIED
BY WPL & CSM VOL 7 PG 147 INDICATES THAT THE R/R WAS
ACCEPTED AS COR. REF. SAME. R/W POST ON NW SIDE OF
MON. 2' WEST OF OLD N/S FENCE. 7' WEST OF STANDING N/S
FENCE. ALUM. 296,763.91; 2,238,473.49 RAIL ROAD RAIL
296,747.64; 2,238,480.77
- 1979 BARNES #6182 FD PIPE WITH CAP
- 1981 BARNES 6-201 FD 1" PIPE. REPLACED WITH ALUM. MON.
REFERENCED SAME.
- 1982 SCHROEDER #1277 CALLS FOR COR BUT STATES NOTHING
ABOUT IT. 1324.35 NORTH OF 1/16TH COR., 2648.70 TO SE
COR SEC 18, ANGLE 90-50-44 @ SE COR SEC 18 FROM SOUTH
LINE OF SE 1/4 SEC 18 TO E 1/4 COR SEC 18
- 1987 NORTHROP CSM VOL 12 PG 588 ALUM. MON. 2037.88 TO
CENTER OF STAFF RD. 2649.5 TO NE COR SEC 18.
- 1987 BARNES VOL 6 PG 201 FD ALUM. MON.
- 1987 BARNES VOL 6 PG 373 FD ALUM. MON.
- 1991 NORTHROP #11911 EXIST ALUM. MON. FOUND OF RECORD.
ANGLE 90-34-02 @ E 1/4 COR SEC 18 FROM E/W 1/4 LINE SEC
18 ALONG E. LINE OF SEC 18, 2298.65 EAST OF CENTERLINE
STAFF RD
- 1991 NORTHROP #11912 FD ALUM. 2037.88 TO CENTER OF STAFF
RD.

11/07/07

Donald Barnes

FU555

FD ALUM. MON. & REFERENCE MONUMENTS.

©) Was the corner restored through acceptance of (1) an obliterated evidence location, or, (2) a found perpetuated location?

ACCEPTED FD ALUM.

D) Describe any material discrepancy between the location of the corner as restored or reestablished and the location of that corner as previously restored or reestablished by distance and direction. Show the discrepancy on the plan view drawing under (a), above. Show the distances between the corner as previously restored or reestablished and (1) the corner as restored or reestablished, and (2) to at least 4 of the witness monuments shown on the drawing in (a), above.

THE R/R RAIL THAT WAS ONCE USED AS THE CORNER IS SHOWN IN THE DIAGRAM. IT IS S22-49E 17.4 FROM THE ALUM.

(E) Was the corner reestablished through lost corner proportionate methods? If so, show the method, including the directions and distances to other public land survey corners used as evidence or used for proportioning the corner location.

I, **Donald Barnes**, hereby certify that the corner location as identified by the corner code index was determined by me under my direction and control and that this U.S. Public Land Survey Monument Record is correct and complete to the best of my knowledge and belief.

Seal

11/07/07

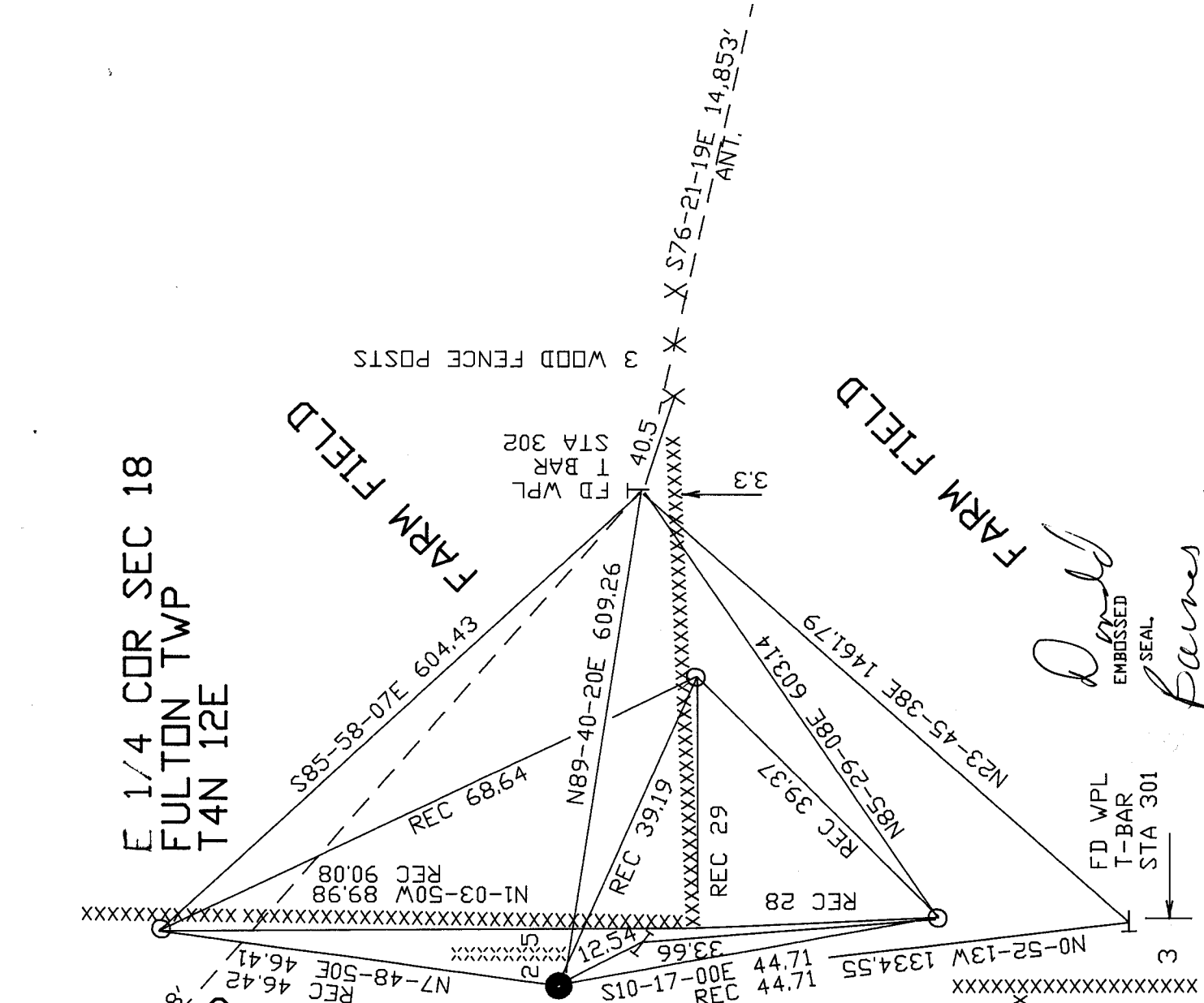
Emboss

SHEET 2 OF 3

Donald
Barnes

CORNER CODE **L-5**

A.E. 7.08 REQUIREMENT

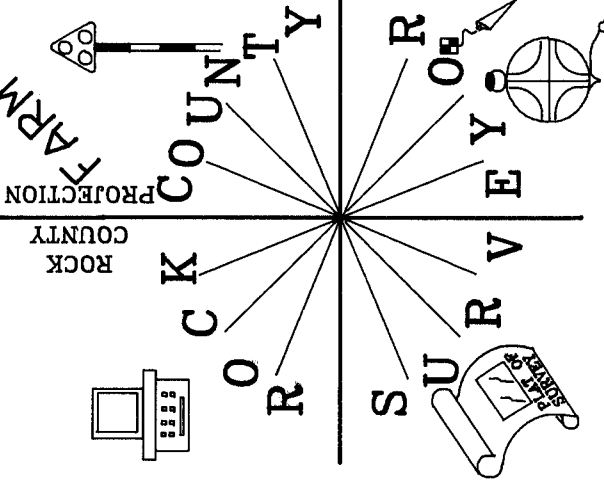


E 1/4 COR SEC 18
 FULTON TWP
 T4N 12E

FARM FIELD

FARM FIELD

N



N43-50-58W 134.48'
 RED/WHITE ANT.

FARM FIELD

ROCK COUNTY

COUNTY

SURVEY

OR

ZEISS

NOT TO SCALE

○ FD 1" PIPE

● FD ALUM. MON. XXXXXXXXXXXX
 E 1/4 COR
 SEC 18

∧ FD WPL IN VERTICAL
 IN 1977 (USED OLD
 OBSERVATIONS)

OBSERVATION SHEET #302

D. J. James
 EMBOSSED SEAL
 STA 301

11/07/07