

U.S. PUBLIC LAND SURVEY MONUMENT RECORD

For Public Land Survey Corners In:
T. 4 N. R. 12 E. 4th P.M.
CORNER CODE INDEX

WI ADMINISTRATIVE CODE A-E 7.08 REQUIREMENT
REV 10/23/2004 USMONRECDWG

	1	2	3	4	5	6	7	8	9	10	11	12	13	14	15	16	17	18	19	20	21	22	23	24	25
A																									
B																									
C																									
D																									
E																									
F																									
G																									
H																									
J																									
K																									
L																									
M																									
N																									
O																									
P																									
Q																									
R																									
S																									
T																									
U																									
V																									
W																									
X																									
Y																									
Z																									

1 2 3 4 5 6 7 8 9 10 11 12 13 14 15 16 17 18 19 20 21 22 23 24 25
PLACE MONUMENT SYMBOL AT PROPER LOCATION ON ABOVE INDEX

FULTON TWP
ROCK COUNTY WI

IF AVAILABLE
ROCK COUNTY COORDINATES PREFERRED

North _____ Elev. _____

East _____

Hor. Datum _____ Vert. Datum _____

LATITUDE _____ ELLIPS. HT. _____

LONGITUDE _____

NAD83(91) _____ NETWORK ADJ. YR _____

GPS (X) _____ TRAVERSE (X) _____

BASED ON THE FOLLOWING CONTROL:

CORNER MONUMENT

WITNESS MONUMENT

BEARINGS ARE BASED ON: _____

FIELD BOOK _____ PAGE # _____

SHEET 1 OF 3

SHOW A PLAN VIEW DRAWING DEPICTING THE CORNER MONUMENT AND SURROUNDING PHYSICAL FEATURES, INCLUDING THE EXCAVATION AREA AND DEPTH.

PLANNING & ZONING COMMITTEE ADOPTED THIS FORM ON 12/2/1982

CORNER CODE J-5

FU543

(B) Describe any record evidence, monument evidence, occupational evidence, testimonial evidence or any other material evidence you considered, and whether the monument was found or placed.

- 1834 (APR) HARRISON WEST ON A RANDOM BET 7 & 18
1320 LEAVE PRAIRIE
2640 TEMPY ¼ SEC COR.
3884.1 TRAIL NW TO FOUR LAKES
5338.74 WEST BOUNDARY 19.14' N OF P LAND ROLLING 2ND
RATE WITH BUR OAK TIMBER FOR LAST ¾ OF MILE
1ST ¼ LEVEL 2ND RATE PRAIRIE
COR EAST BET 7 & 18
2698.74 QUARTER SEC COR {BURR O 10 N76W 213.18'
BURR O 10 S10E 83.92' BURR O 10 BURR O
10} MARKED
5338.74 INT. SEC COR
- 1834 (APR) HARRISON NORTH BET SECS 7 & 8
2376 LEAVE PRAIRIE
2640 QUARTER SEC COR {BURR O 20 N10E 81.18' BURR
O 20 N89E 112.2' BURR O 20 BURR O 20 } MARKED
3220.8 BURR O 12 IN DIAM
4070.88 BURR O 18 IN DIAM
5280 COR TO SEC 5,6,7,8 {BURR O 12 S38W 44.22' W.O.
20 S48E 58.08' BURR O 12 N50E 60.72' BURR O
12 N52W 77.22' LAND ROLLING 2ND RATE WITH
WHITE & BURR OAK TIMBER - PRAIRIE SAME AS
BEFORE
- 1834 (MAR/APR) HARRISON NORTH BETWEEN SECS 17 & 18
858 ROAD NE
1987.92 BURR O 8 IN DIAM
2383.92 BURR O 12
2640 QUARTER SEC COR. {BURR O 18 N42E 62.7' BURR O
10 N57W 9.9'
3541.56 BURR O 12
4983 ENTER PRAIRIE
5280 COR TO SEC S 7,8,17,18 {BURR O 20 S52W 271.26'
BURR O 18 S15E (NO DIST)
LAND ROLLING 2ND RATE TIMBER BURR & RED O
- 1834 (MAR/APR) HARRISON EAST ON RANDOM BET. SECS 8 & 17
2640 TEMPY ¼ POST
3228.06 WAGON ROAD NE
4113.12 TRAIL NE
4488 LEAVE PRAIRIE & ENTER TIMBER
5323.56 INT. E BDY 18 N OF P LAND GENTLY ROLLING 1ST
RATE PRAIRIE COVERED WITH WILD GRASS & WEEDS
COR WEST BET SEC 8 & 17
2661.78 QUARTER SEC COR {SET POST & RAISED MOUND OF
EARTH & SODS
5323.56 INT SEC COR
- 1855 TWP RD BK 1 PG 31 BEGINNING IN THE CENTER OF THE
PUBLIC HIGHWAY RUNNING 462' FROM THE EAST END OF THE
BRIDGE OVER THE CATFISH RIVER; THENCE N63E 9306';
THENCE 13W 330'; THENCE 26E 3270.3; TO THE CENTER OF A
RD ON THE NORTH LINE OF SEC 18 254.76' FROM THE NE
COR OF SAID SEC, AND NOW THEREFORE " " " " A PUBLIC
HIGHWAY 66' WIDE " " " "
- 1871 RUGER VOL 2 PG 57 & #1079 FD SE BEARING TREE &
STUMP OF SW BEARING TREE. SET LIMESTONE 22X7X6.
VAR 8-02 2673.82 TO S ¼ COR SEC 8. S ¼ COR ON
STRAIGHT LINE & MID WAY BETWEEN SW & SE CORNERS
SEC 8
- 1937 SUNNY VOL 3 PG 359 FD L.S. MON. SET 1 ½"X15"
CAPPED PIPE ON TOP REF. SAME. IN PVMT.
- 1959 BAPTIST #1279 CAPPED PIPE
- 1960 BATTERMAN VOL 4 PG 13 FD PIPE 5298.44 TO SE COR
SEC 18.

Donald Barnes
May 17, 2006

FU543

1960 BATTERMAN #1293 5298.44 GO NE COR SEC 19. STATES NOTHING ABOUT TYPE OF MON.
1964 LEE #1280 CAPPED PIPE 249.10 EAST OF CENTERLINE OF STAFF RD.
1969 CARRINGTON #1282 FOUND IRON PIPE EAST OF CENTER OF STAFF RD
1972 BATTERMAN VOL 4 PG 279 DUG AT SW COR. FD 2" CAPPED PIPE. REF SAME. IN PVMT & WEST OF STONE CULVERT. WPL 299,412.61; 2,238,427.59
1972 LEE VOL 4 PG 553 DU & FD 2" CAPPED PIPE 4" DOWN. REF SAME.
1973 LEE #1286 FD PIN SO-03-37E 2648.71 TO E 1/4 COR SEC 18 & SO-03-37E 5297.42 TO SE COR SEC 18
1975 WPL #1076 299,412.61; 2,238,427.59 N88-40-13E 2677.96 TO S 1/4 COR SEC 8, N1-46-50W 2666.38 TO W 1/4 COR SEC 8, S1-08-25E 2665.55 TO W 1/4 COR SEC 17
1975 WPL #1287 & 1267 299,412.61; 2,238,427.59 PREVIOUS BEARING & DISTANCE TO N 1/4 COR SEC 18 IS CROSSED OUT & NEW IS: S88-34-22W 2645.82 TO N 1/4 COR SEC 18
1977 WOODMAN CSM VOL 7 PG 147 FD SPIKE 2665.56 TO E 1/4 COR SEC 18
1978 BARNES #1275 SHOWS RECORD DISTANCES.
1978 SANDSNES VOL 5 PG 448 299,412.61; 2,238,427.59
1979 COMBS #12982 CALLS FOR COR BUT STATES NOTHING ABOUT IT. 249.20 EAST OF CENTERLINE OF STAFF RD
1982 BARNES VOL 6 PG 261 FD CAPPED IP 0.3' DEEP. TIED INTO AERO-METRIC PHOTO CONTROL. 299,413.13; 2,238,427.39
1983 BARNES VOL 6 PG 303 WPL 299,412.61; 2,238,427.59 N1-46-50W 2666.37 TO W 1/4 COR SEC 8, N88-40-13E 2677.96 TO S 1/4 COR SEC 8.
1985 COMBS #13085 CALLS FOR MON BUT IT IS CUT OFF MAP
1986 COMBS #13401 CALLS FOR MON BUT IT IS CUT OFF MAP
1986 COMBS #13403 CALLS FOR COR BUT STATES NOTHING ABOUT IT.
1987 BARNES VOL 6 PG 373 FD CAPPED PIPE
1987 NORTHROP CSM VOL 12 PG 588 STATES NOTHING ABOUT MON. 2649.5 TO E 1/4 COR SEC 18

FD CAPPED PIPE 0.7' DEEP & PIPE LAYING HORIZONTALLY 0.2' DEEP. FD MAG NAIL 2.00' TO THE NORTH & MAG NAIL 1.93 TO THE WEST.

C) Was the corner restored through acceptance of (1) an obliterated evidence location, or, (2) a found perpetuated location?

ACCEPTED PERPETUATED LOCATION.

D) Describe any material discrepancy between the location of the corner as restored or reestablished and the location of that corner as previously restored or reestablished by distance and direction. Show the discrepancy on the plan view drawing under (a), above. Show the distances between the corner as previously restored or reestablished and (1) the corner as restored or reestablished, and (2) to at least 4 of the witness monuments shown on the drawing in (a), above.

I, Donald Barnes, hereby certify that the corner location as identified by the corner code index was determined by me under my direction and control and that this U.S. Public Land Survey Monument Record is correct and complete to the best of my knowledge and belief.

Seal

Donald Barnes
May 17 2006

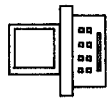
SHEET 2 OF 3

CORNER CODE **J-5**

A.E. 7.08 REQUIREMENT

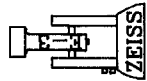
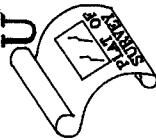
A

ROCK COUNTY PROJECTION



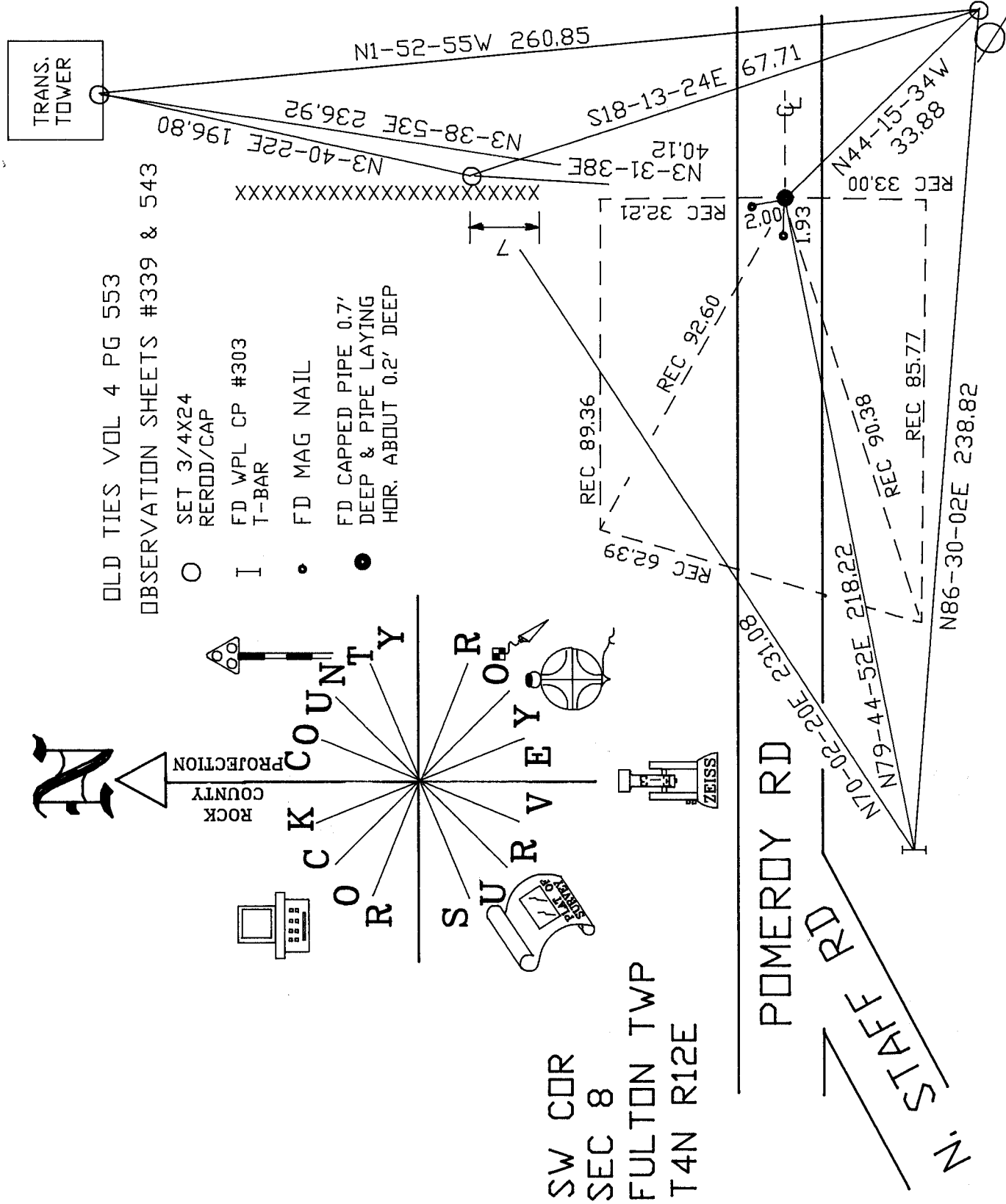
ROCK COUNTY

SURVEY



OLD TIES VOL 4 PG 553
OBSERVATION SHEETS #339 & 543

- SET 3/4X24 REROD/CAP
- I FD WPL CP #303 T-BAR
- FD MAG NAIL
- FD CAPPED PIPE 0.7' DEEP & PIPE LAYING HOR. ABOUT 0.2' DEEP



SW COR
SEC 8
FULTON TWP
T4N R12E

SHEET 3 OF 3

EMBOSSED SEAL

Donald Barnes

May 17 2006

