

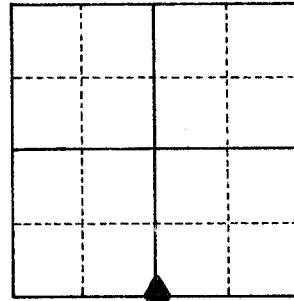
U.S. PUBLIC LAND SURVEY MONUMENT RECORD

For Public Land Survey Corners in the
T. 4 N., R. 13 E. MILTON TWP.

For Miscellaneous Corners within Sec.
10, T. 4 N., R. 13 E.

CORNER CODE INDEX

	1	2	3	4	5	6	7	8	9	10	11	12	13	14	15	16	17	18	19	20	21	22	23	24	25
A																									
B																									
C	6																								
D		5																							
E			4																						
F				3																					
G	7																								
H		8																							
I			9																						
J				10																					
K					11																				
L	18																								
M		17																							
N			16																						
O				15																					
P					14																				
Q						13																			
R							12																		
S								11																	
T									10																
U										9															
V											8														
W												7													
X													6												
Y														5											
Z															4										



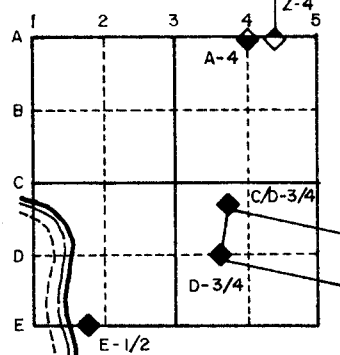
1. Above code numbers are positioned Meander, Claim, or Fractional corners of the section.
2. Township corner code numbers shall be applied to the corners of above typical section.

PLACE MONUMENT SYMBOL (◆) AT PROPER
 LOCATION ON ABOVE INDEX

IF AVAILABLE
 STATE PLANE COORDINATES

North (Y) _____ Eleve. (Z) _____
 East (X) _____ Zone _____
 Hor. Datum _____ Vert. Datum _____

EXAMPLE

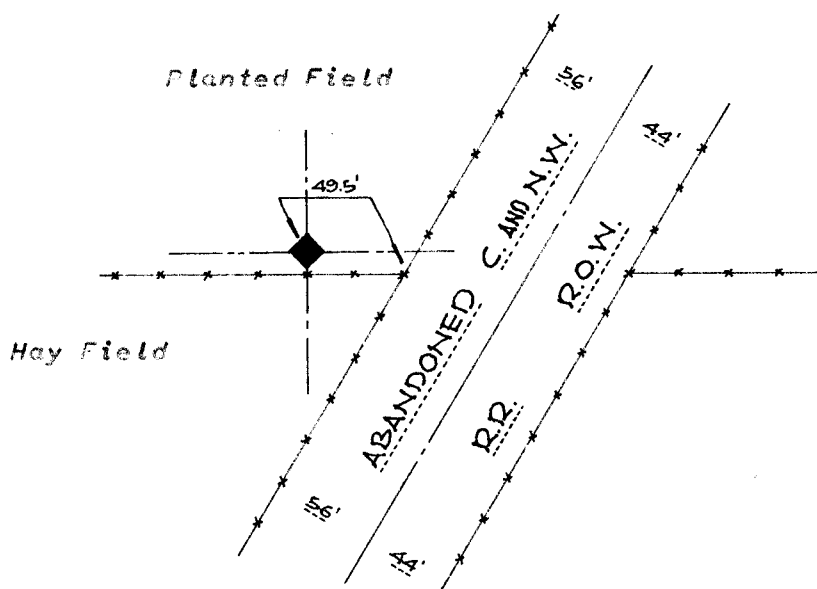


◆ CORNER MONUMENT

○ WITNESS MONUMENT



BEARINGS ARE BASED ON :



Found Cut Limestone Monument at corner. Monument
 is 1.0 feet North of fence and 0.2 feet below ground
 level. Field Book: MILTON No. 13 Page 49
 SET CARSONITE WITH SIGN ON EAST SIDE OF STONE

MICROFILMED

SHOW A PLAN VIEW DRAWING DEPICTING THE CORNER MONUMENT AND SURROUNDING PHYSICAL FEATURES, INCLUDING THE EXCAVATION AREA AND DEPTH. THE CORNER MONUMENT SHALL HAVE THE FOLLOWING CHARACTERISTICS: 1) HAVE AT LEAST TWO PREDETERMINED BREAK-OFF POINTS. 2) IF BROKEN, LEAVE A PERMANENTLY MAGNETIZED REMNANT AT THE ORIGINAL POINT. 3) MUST BE EXTENDABLE. 4) THE CAP IS INSCRIBED: ROCK COUNTY SURVEY MONUMENT - PENALTY FOR DISTURBING MARKER. 5) OR AN EXISTING CUT LIMESTONE. AN IRON PIPE 1 1/2" x 4'0" (MINIMUM) WITH AT LEAST 4 DURABLE WITNESS MONUMENTS MAY BE USED IN AREAS WHERE GROUND WATER IS WITHIN 1.0' OF THE SURFACE. IF THE CORNER IS OCCUPIED BY AN IMPROVEMENT (MANHOLE, BURIED CABLE, ETC.), ANY DURABLE, DISTINCT MONUMENT MAY BE USED AND REFERENCED WITH AT LEAST 4 DURABLE WITNESS MONUMENTS.

1. Describe any record evidence, monument evidence, occupational evidence, testimonial evidence or any other material evidence you considered and whether the monument was found or set.

Found Cut Limestone Monument at corner. Monument is

1.0 feet North of fence and 0.2 feet below ground level.

2. Describe any material discrepancy between the location of the corner as restored or re-established and the location of that corner as previously restored or re-established.

None

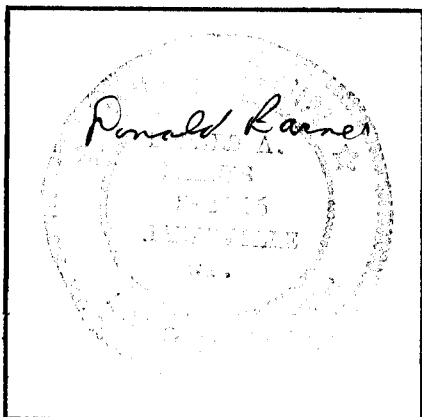
3. Was the corner restored through acceptance of an obliterated evidence location or a found perpetuated location.

Found perpetuated location

4. Was the corner re-established through lost corner proportionate methods? If so, show the method, including directions and distances to other public land survey corners used as evidence or used for proportioning in determination of the corner location.

No

I, Donald A. Barnes, hereby certify that the corner points as identified by the corner code index were, in a field survey on May 13 1982, established, re-established, monumented, re-monumented, recovered or restored as expressed below and in conformance with the regulations and rules as required in the current manual of survey instructions of the United States Department of Interior, Bureau of Land Management.



COUNTY SURVEYOR FILING DATA

Date of Computer Entry _____

Date Received _____

Date Microfilmed _____

Treasurer's Receipt No. _____

Number of Included Sheets _____

AFFIX YOUR LAND SURVEYOR SEAL.

J 15