

U.S. PUBLIC LAND SURVEY MONUMENT RECORD

For Public Land Survey Corners in:
T. 1N., R. 2E

WI ADMINISTRATIVE CODE A-E 7.08 REQUIREMENT

BELOIT TWP

CORNER CODE INDEX

A	2	3	4	5	6	7	8	9	10	11	12	13	14	15	16	17	18	19	20	21	22	23	24	25
B	6																							
C																								
D																								
E																								
F	1																							
G																								
H																								
I																								
J																								
K	18																							
L																								
M																								
N																								
O																								
P	19																							
Q																								
R																								
S																								
T	30																							
U																								
V																								
W																								
X	31																							
Y																								
Z																								

TWP
ROCK COUNTY WI

IF AVAILABLE
ROCK COUNTY COORDINATES PREFERRED

North 21,813.06 Elev. _____

East 477,675.96

Hor. Datum COUNTY Vert. Datum _____

LATITUDE _____ ELLIPS. HT. _____

LONGITUDE _____

GPS (X) _____ TRAVERSE (X) _____

BASED ON THE FOLLOWING CONTROL:

PLACE MONUMENT SYMBOL AT PROPER LOCATION ON ABOVE INDEX

CORNER MONUMENT

WITNESS MONUMENT

BEARINGS ARE BASED ON: _____

FIELD BOOK _____ PAGE # _____

SHEET 1 OF 2

SHOW A PLAN VIEW DRAWING DEPICTING THE CORNER MONUMENT AND SURROUNDING PHYSICAL FEATURES, INCLUDING THE EXCAVATION AREA AND DEPTH.

PLANNING & ZONING COMMITTEE ADOPTED THE ABOVE FORM ON 12/2/1982

CORNER CODE R-11

BE586

(B) Describe any record evidence, monument evidence, occupational evidence, testimonial evidence or any other material evidence you considered, and whether the monument was found or placed.

1834 HARRISON EAST ON RAND. BET SECS 21 & 28
1320 LEFT TIMBER & ENTER PRAIRIE
2640 TEMPY 1/4 SEC COR.
5098.5 RAVEN CRS S.S.
5263.5 INT. EAST BOUNDARY 19.8' SOUTH OF POST
COR. WEST
2631.75 QUARTER SEC COR. SET POST & RAISED MOUND ON HIGH LEVEL
LAND.
5263.56 SEC COR.
1859 RUGER VOL 6 PG 314 SURROUNDED BY 4 HH. 2640 VAR 6-58 TO SW COR SEC
21, & 2627.30 VAR 6-33 TO CENTER OF SEC 21.
1943 BATTERMAN MAP #445 FOUND MONUMENT BUT STATED NOTHING ABOUT IT.
2635.44 TO CENTER SEC 21 & ANGLE OF 89-43-40 FROM CENTER OF SEC 21
TO SW CORNER OF SEC 21.
1976 LEUENBERGER CSM V6 PG 42 FOUND PIPE.
1979 LEE CSM V 9 PG 85 FOUND PIPE
1983 WIDOT STH 213 PROJECT 5571-01-21; FOUND 1" IRON PIPE. N/S
192,944.38; E/W 2,247,820.33
1984 WIDOT PROJ #5571-01-21 REV 8-02-84 FD 1" PIN. N/S 192,944.38; E/W
2,247,820.33
1989 KREBS MAP #12151 FOUND PIPE
1994 KREBS MAP #9801 FOUND CAST IRON MONUMENT.

FOUND C.I. MONUMENT.

C) Was the corner restored through acceptance of (1) an obliterated evidence location, or, (2) a found perpetuated location?
ACCEPTED FOUND LOCATION.

D) Describe any material discrepancy between the location of the corner as restored or reestablished and the location of that corner as previously restored or reestablished by distance and direction. Show the discrepancy on the plan view drawing under (a), above. Show the distances between the corner as previously restored or reestablished and (1) the corner as restored or reestablished, and (2) to at least 4 of the witness monuments shown on the drawing in (a), above.

(E) Was the corner reestablished through lost corner proportionate methods? If so, show the method, including the directions and distances to other public land survey corners used as evidence or used for proportioning the corner location.
NO

I, Donald Barnes, hereby certify that the corner points as identified by the corner code index were, in a field survey on, established, re-established, monumented, re-monumented, recovered or restored as expressed below and in conformance with the regulations and rules as required in the current manual of survey instructions of the United States Department of Interior, Bureau of Land Management.

seal

Donald Barnes
Oct 16, 1998

EMBOSS LAND SURVEYOR SEAL

COUNTY SURVEYOR FILING DATA

Date of computer entry _____

Date microfilmed _____

Number of included sheets _____

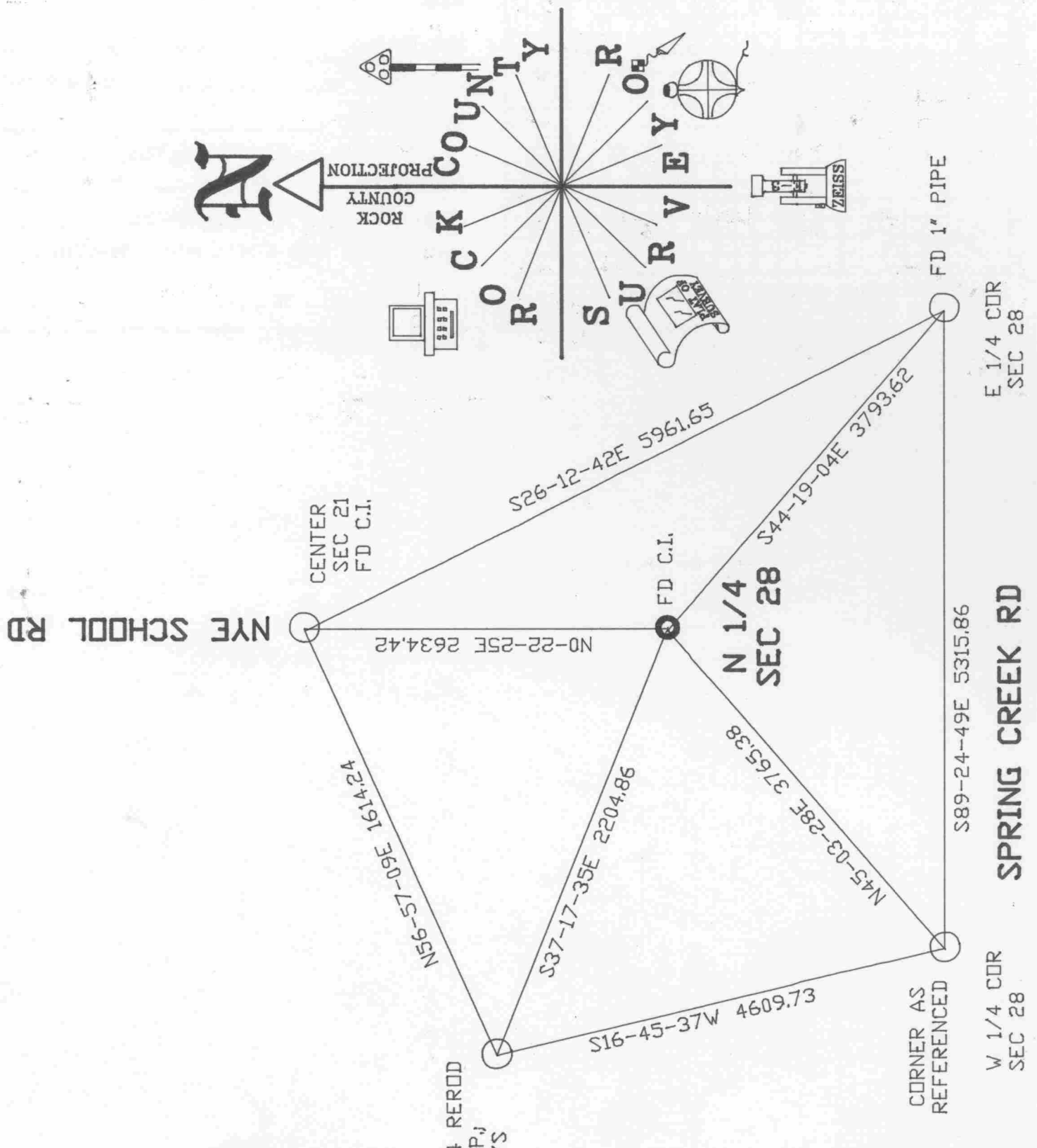
CORNER CODE

A-E 7.08 REQUIREMENT

R-11

Donald Barnes
Oct 16, 1998

STA #222 3/4X24 REROD
94 +/- NORTH U.P.J
13.5 WEST OF N/S
FENCE.



R-11

