

# U.S. PUBLIC LAND SURVEY MONUMENT RECORD

For Public Land Survey Corners in:

T. 1N., R. 12E

CORNER CODE INDEX

WI ADMINISTRATIVE CODE A-E 7.08 REQUIREMENT

## BELOIT TWP TWP

### ROCK COUNTY WI

IF AVAILABLE

ROCK COUNTY COORDINATES PREFERRED

A	1	2	3	4	5	6	7	8	9	10	11	12	13	14	15	16	17	18	19	20	21	22	23	24	25
B																									
C	6																								
D																									
E																									
F	1																								
G		8																							
H			9																						
J				10																					
K					11																				
L	18					16																			
M																									
N																									
O																									
P	19					20																			
Q																									
R																									
S																									
T	30					29																			
U																									
V																									
W																									
X	31					32																			
Y																									
Z																									

North 217,113.77 Elev. \_\_\_\_\_

East 477,710.58

Hor. Datum COUNTY Vert. Datum \_\_\_\_\_

LATITUDE \_\_\_\_\_ ELLIPS. HT. \_\_\_\_\_

LONGITUDE \_\_\_\_\_

GPS (X) \_\_\_\_\_ TRAVERSE (X) \_\_\_\_\_

BASED ON THE FOLLOWING CONTROL:

PLACE MONUMENT SYMBOL  AT PROPER LOCATION ON ABOVE INDEX

CORNER MONUMENT

WITNESS MONUMENT

(a)

BEARINGS ARE BASED ON:

FIELD BOOK \_\_\_\_\_ PAGE # \_\_\_\_\_

SHEET 1 OF 2

SHOW A PLAN VIEW DRAWING DEPICTING THE CORNER MONUMENT AND SURROUNDING PHYSICAL FEATURES, INCLUDING THE EXCAVATION AREA AND DEPTH.

PLANNING & ZONING COMMITTEE ADOPTED THE ABOVE FORM ON 12/2/1982

CORNER CODE N-11

BE566

(B) Describe any record evidence, monument evidence, occupational evidence, testimonial evidence or any other material evidence you considered, and whether the monument was found or placed.

- 1834 HARRISON EAST ON RAND. BET SECS 16 & 21
  - 660 ENTER BOTTOM
  - 1254 BROOK 1.32' CRS S. (NEAR THE HEAD)
  - 1782 TO A TRAIL LEADING TO TURTLE VILLAGE
  - 2112 LEFT BOTTOM CRS S.W.
  - 2640 TEMPY 1/4 SEC COR.
  - 5258.88 INT. EAST BOUNDARY 66' SOUTH OF POST COR. WEST
  - 2629.44 QUARTER SEC COR. SET A POST & RAISED MOUND ON GROUND DESCENDING S.W.
  - 5258.88 SEC COR.
- 1929 BATTERMAN VOL 3 PG 157 FD 4 HH SET R/R AT SURFACE RD. & TIES.
- 1949 BATTERMAN MAP #43619 ANGLE 89-52 @ CENTER OF SEC 21 FROM W 1/4 TO N 1/4 CORNERS OF SEC 21
- 1956 BATTERMAN MAP #442 1328.22 TO N 1/16TH COR OF NE 1/4 SEC 21
- 1963 BATTERMAN VOL 4 PG 182 SET TIES. 1328.65 TO S 1/16TH COR OF THE SE 1/4 OF SEC 16, 2657.05 TO NE COR SEC 21. SET MON BOX
- 1963 WIDOT CTH Q PROJECT 2688.79 TO NW COR SEC 21 & 2657.05 TO NE COR SEC 21.
- 1965 BATTERMAN VOL 4 PG 175 FD R/R AT SURFACE.
- 1984 WIDOT PROJ 5571-01-21 REV 8-2-84 198,245.20; E/W 2,247,796.80 2667.92 TO NW COR SEC 21.

FOUND PIPE IN MONUMENT BOX.

C) Was the corner restored through acceptance of (1) an obliterated evidence location, or, (2) a found perpetuated location?  
ACCEPTED FOUND LOCATION. PIPE IS WITHIN .02' OF LINE BETWEEN S 1/4 AND N 1/4 CORNERS OF SEC 21 AND .21' OF A LINE BETWEEN THE N 1/4 AND SOUTH 1/4 CORNERS OF SEC 16.

D) Describe any material discrepancy between the location of the corner as restored or reestablished and the location of that corner as previously restored or reestablished by distance and direction. Show the discrepancy on the plan view drawing under (a), above. Show the distances between the corner as previously restored or reestablished and (1) the corner as restored or reestablished, and (2) to at least 4 of the witness monuments shown on the drawing in (a), above.

(E) Was the corner reestablished through lost corner proportionate methods? If so, show the method, including the directions and distances to other public land survey corners used as evidence or used for proportioning the corner location.  
NO

I, Donald Barnes, hereby certify that the corner points as identified by the corner code index were, in a field survey on established, re-established, monumented, re-monumented, recovered or restored as expressed below and in conformance with the regulations and rules as required in the current manual of survey instructions of the United States Department of Interior, Bureau of Land Management.

*Donald Barnes*  
OCT 9, 1998

COUNTY SURVEYOR FILING DATA

Date of computer entry \_\_\_\_\_

Date microfilmed \_\_\_\_\_

Number of included sheets \_\_\_\_\_

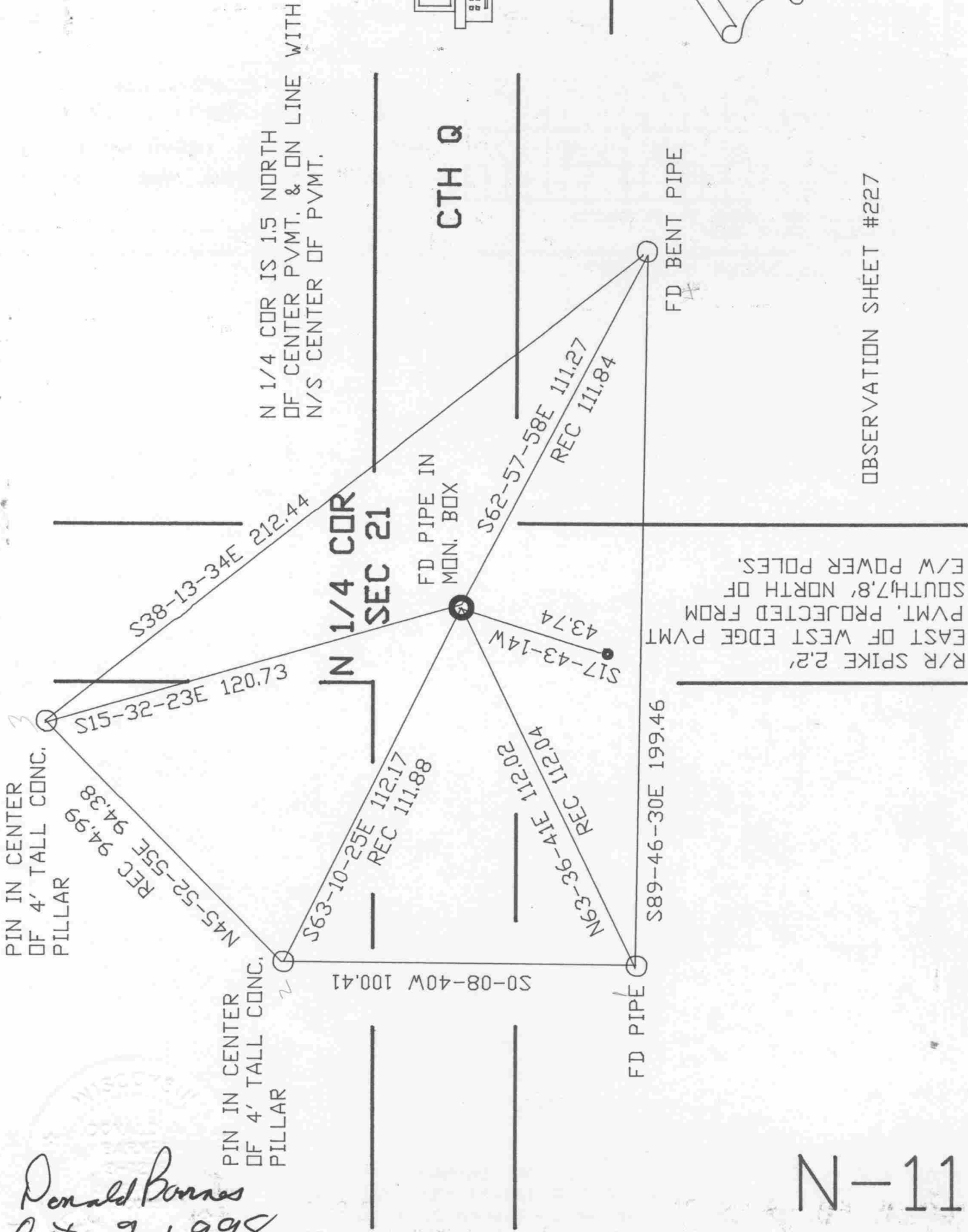
CORNER CODE

EMBOSS LAND SURVEYOR SEAL

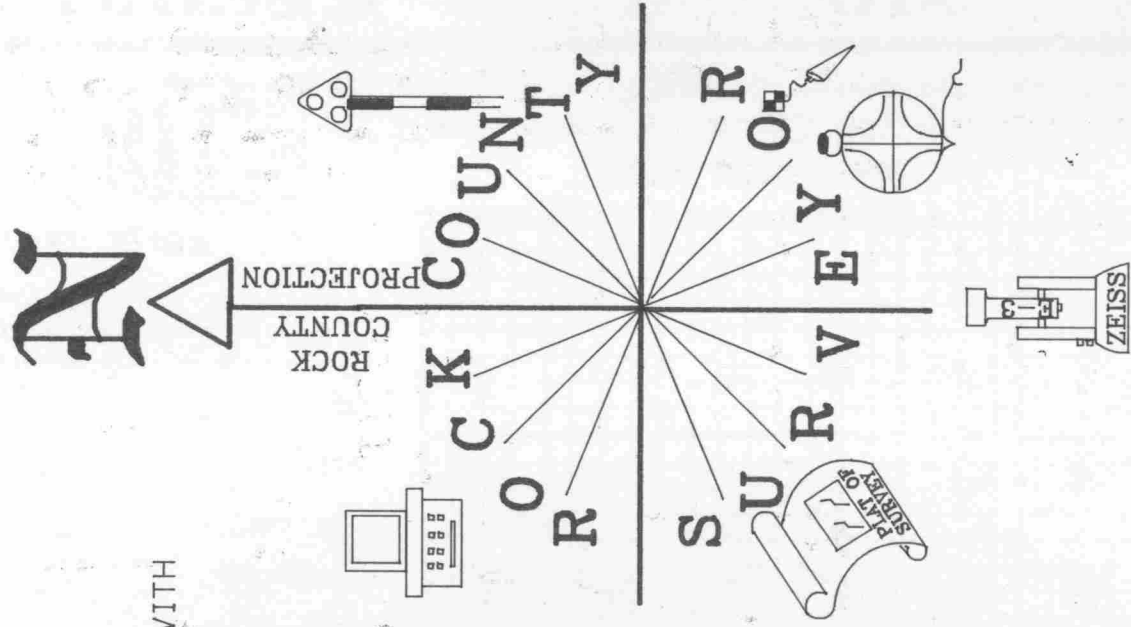
A-E 7.08 REQUIREMENT

N-11

NYE SCHOOL RD.



OBSERVATION SHEET #227



*Donald Barnes*  
86916 20  
Oct 9, 1998

N-11