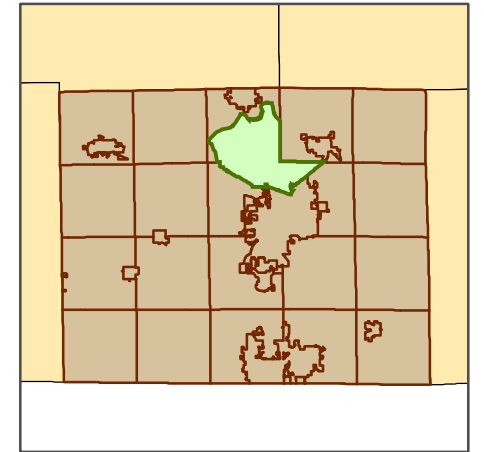
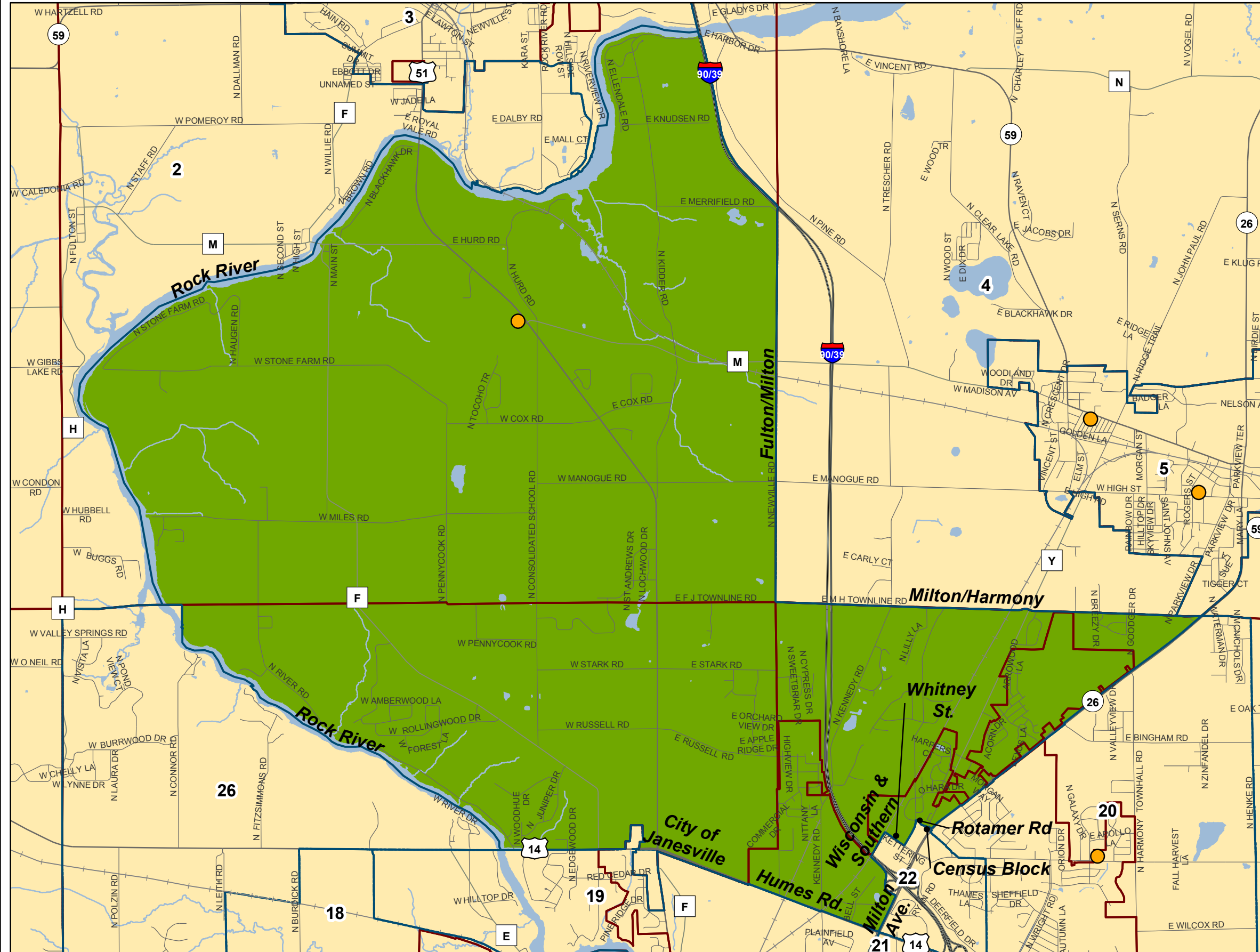






Supervisory District 9

Rock County, Wisconsin



Adopted: 9/8/2011

-  Polling Places
-  Supervisory District 9
-  Surrounding Supervisory Districts
-  Town Boundaries

0 0.5 1 1.5 2 2.5 3 3.5 4 Miles

Data Sources: Rock County Planning and Development, Rock County Clerk, US Census Bureau
 This map is not intended to be a substitute for an actual field survey and is an advisory reference only.



Rock County Geographic Information Systems (GIS)

Planning, Economic and Community
 Development Agency
 51 S Main St, Janesville, WI 53545
 (TEL) 608-757-5587, (FAX) 608-757-5586
 email: Planning@co.rock.wi.us