

PUBLIC LAND SURVEY MONUMENT RECORD

For Public Land Survey Corners in the

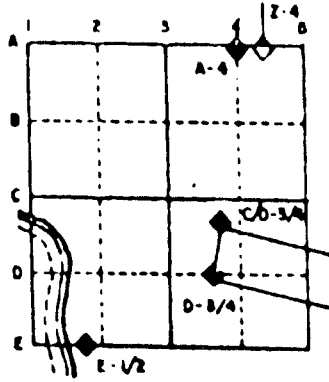
T. 1 N., R. 13 E.

CORNER CODE INDEX

	1	2	3	4	5	6	7	8	9	10	11	12	13	14	15	16	17	18	19	20	21	22	23	24	25
A																									
B																									
C																									
D																									
E																									
F																									
G																									
H																									
I																									
J																									
K																									
L																									
M																									
N																									
O																									
P																									
Q																									
R																									
S																									
T																									
U																									
V																									
W																									
X																									
Y																									
Z																									

PLACE MONUMENT SYMBOL (●) AT PROPER LOCATION ON ABOVE INDEX

EXAMPLE



TURTLE TWP
ROCK COUNTY WI

IF AVAILABLE
STATE PLANE COORDINATES

North (Y) 21,561.45 Elev. (Z) _____

East (X) 503,991.85 Zone _____

Hor. Datum COUNTY Vert. Datum _____

◆ CORNER MONUMENT

○ WITNESS MONUMENT

BEARINGS ARE BASED ON:

SHEET _____ OF _____

CORNER CODE: R7(1)

(B) Describe any record evidence, monument evidence, occupational evidence, testimonial evidence or any other material evidence you considered, and whether the monument was found or placed.

1836 LYONS SET QUARTER SECTION POST & MADE MOUND OF EARTH & SOD. CALLS FOR 2640 TO SE & SW CORNERS OF SECTION 20.
1859 HOBART VOL 1 PG 108 APPLE 7 S64E 47 & APPLE 4 S46W 54. STATES NOTHING ABOUT CORNER. USED TO SUBDIVIDE SEC 29. 2657.16 FROM W 1/4 TO CENTER OF SEC 29.
1911 KERCH VOL 3 PG 64 SET GAS PIPE. 2647.8 TO SW COR SEC 20, 2647.8 TO SE COR SEC 20, ANGLE OF 89-38-15 AT SW COR SEC 20 FROM W 1/4 TO S 1/4 CORNERS OF SEC 20, 89-53-30 AT SE COR FROM S 1/4 COR TO E 1/4 CORNERS OF SEC 20, & ANGLE OF 89-04 AT NW COR FROM N 1/4 COR TO W 1/4 CORNERS OF SECTION 29.
1911 KERCH "MORGAN FARM" P7 PG 47.
1930 BATTERMAN VOL 3 PG 186 CALLS FOR 1/4 COR BUT STATES NOTHING ABOUT IT.
1968 POTTRYKUS "CANTERBURY HILLS" P24 PG 8
1984 COMBS CSM VOL 12 PG 17.
1985 LEE CSM VOL 12 PG 97
1989 LEE CSM VOL 14 PG 133
1989 LEE CSM VOL 14 PG 164.
1992 COMBS CSM VOL 16 PG 80.
1992 COMBS CSM VOL 16 PG 75
1992 COMBS CSM VOL 16 PG 194
1993 LEUENBURGER "FULLER'S WOODS" P32 PG 165 CALLS FOR 2647.71 TO SE COR SEC 20.

FOUND PK THAT WAS IN HARMONY WITH RECORD DISTANCES. 2647.82 (REC 2647.80 TO SW & 2647.74 (REC 2647.74; 2647.71) TO SE CORNERS OF SEC 20, 89-37-45 (REC 89-37-15) AT SW COR SEC 20 FROM W 1/4 TO S 1/4 CORNERS OF SEC 20, & 89-03-34 (REC 89-04) AT NW COR FROM N 1/4 COR TO W 1/4 CORNERS OF SEC 29.

C) Was the corner restored through acceptance of (1) an obliterated evidence location, or, (2) a found perpetuated location?
ACCEPTED FOUND PERPETUATED LOCATION.

D) Describe any material discrepancy between the location of the corner as restored or reestablished and the location of that corner as previously restored or reestablished by distance and direction. Show the discrepancy on the plan view drawing under (a), above. Show the distances between the corner as previously restored or reestablished and (1) the corner as restored or reestablished, and (2) to at least 4 of the witness monuments shown on the drawing in (a), above.

I, Donald Barnes, hereby certify that the corner points as identified by the corner code index were, in a field survey on, JAN 9, 1992, established, re-established, monumented, re-monumented, recovered or restored as expressed below and in conformance with the regulations and rules as required in the current manual of survey instructions of the United States Department of Interior, Bureau of Land Management.

seal

Donald Barnes
3/16/95

EMBOSS LAND SURVEYOR SEAL

COUNTY SURVEYOR FILING DATA

Date of computer entry _____

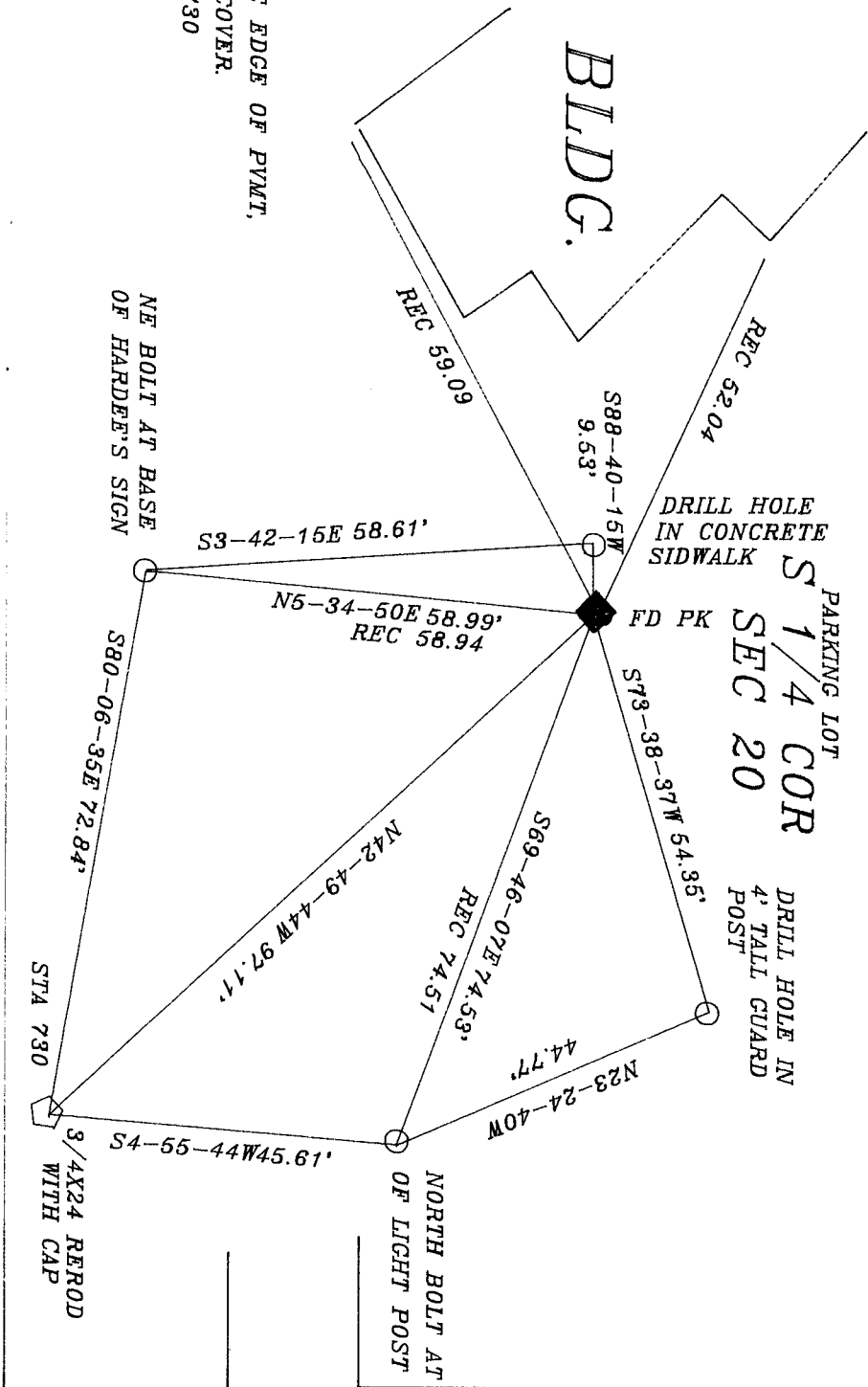
Date microfilmed _____

Number of included sheets _____
CORNER CODE

R7(1)

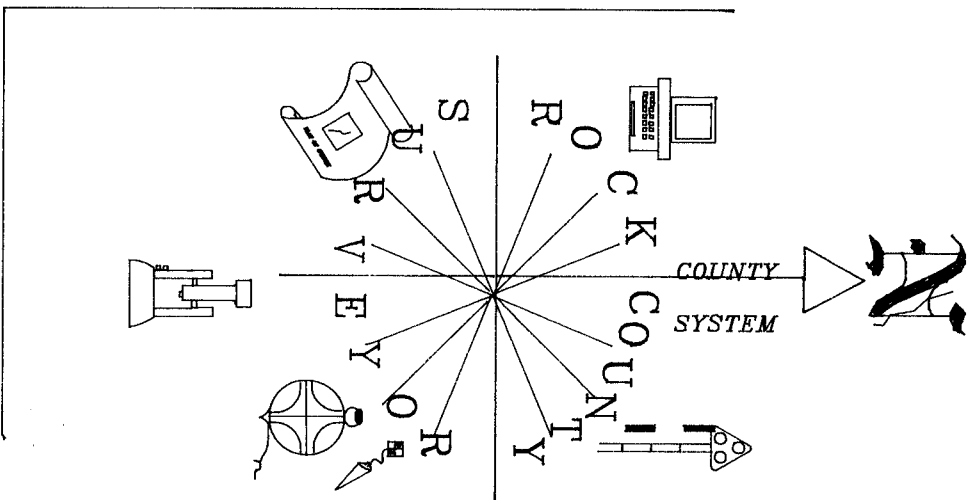
HARDEE'S BLDG.

2.9 N OF CONCRETE EDGE OF PYMT.
18' WEST OF M.H. COVER.
ANGLE SHEET, STA 730



MILWAUKEE AVE

BRANIGAN ST.



Donald Barnes
3/10/95
R7(1)