

# U.S. PUBLIC LAND SURVEY MONUMENT RECORD

For Public Land Survey Corners In:  
T. 1 N. R. 13 E. 4th P.M.  
CORNER CODE INDEX

WI ADMINISTRATIVE CODE A-E 7.08 REQUIREMENT  
REV 10/23/2004 USMONREC.DWG

1	2	3	4	5	6	7	8	9	10	11	12	13	14	15	16	17	18	19	20	21	22	23	24	25	
A																									A
B	6																								B
C		5																							C
D			4																						D
E				3																					E
F					2																				F
G	7																								G
H		8																							H
I			9																						I
J				10																					J
K					11																				K
L	18					16																			L
M		17					15																		M
N			18					14																	N
O				19					13																O
P					20					12															P
Q						21					11														Q
R							22					10													R
S								23					9												S
T									24					8											T
U										25					7										U
V											26					6									V
W												27					5								W
X													28					4							X
Y														29					3						Y
Z															30					2					Z
																31					1				

TURTLE TWP

ROCK COUNTY WI

IF AVAILABLE  
ROCK COUNTY COORDINATES PREFERRED

North \_\_\_\_\_ Elev. \_\_\_\_\_

East \_\_\_\_\_

Hor. Datum \_\_\_\_\_ Vert. Datum \_\_\_\_\_

LATITUDE \_\_\_\_\_ ELLIPS. HT. \_\_\_\_\_

LONGITUDE \_\_\_\_\_

NAD83(91) \_\_\_\_\_ NETWORK ADJ. YR \_\_\_\_\_

GPS (X) \_\_\_\_\_ TRAVERSE (X) \_\_\_\_\_

BASED ON THE FOLLOWING CONTROL:

PLACE MONUMENT SYMBOL  AT PROPER LOCATION ON ABOVE INDEX

CORNER MONUMENT

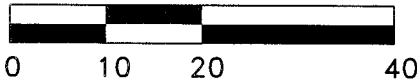
WITNESS MONUMENT

NOTE:

A COTTON PIN WAS SET IN NEW ASPHALT PAVEMENT AT THE SOUTHEAST CORNER OF SECTION 20-1-13. THE PREVIOUS PK NAIL AND CORRESPONDING TIES WERE DESTROYED DURING CONSTRUCTION OF THE KERRY AMERICAS PROJECT.

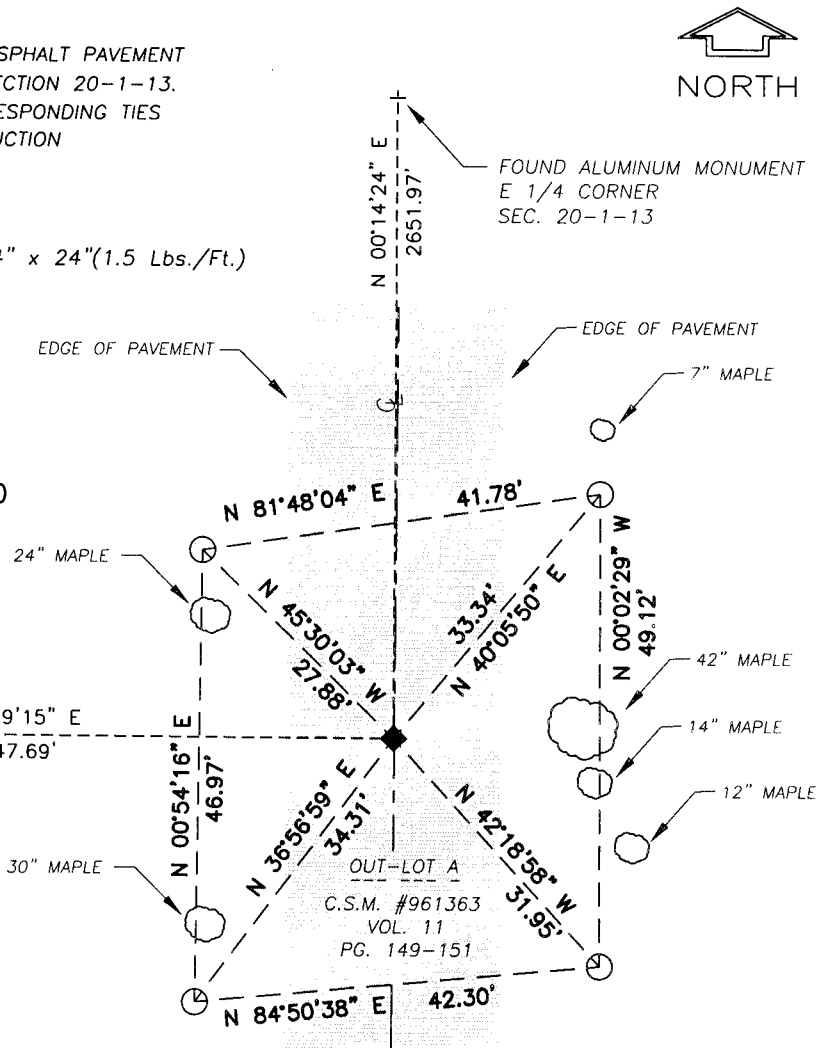
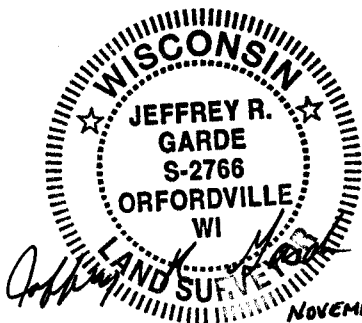
- IRON REBAR SET 3/4" x 24"(1.5 Lbs./Ft.)
- COTTON PIN SET

SCALE: 1" = 20'



BEARINGS ARE BASED ON: Wisconsin County Coordinate System  
Rock Datum

FOUND COTTON PIN  
S 1/4 CORNER  
SEC. 20-1-13



I, Jeffrey R. Garde, hereby certify that the corner location as identified by the corner code index was determined by me under my direction and control and that this U.S. Public Land Survey Monument Record is correct and complete to the best of my knowledge and belief.

FIELD BOOK \_\_\_\_\_ PAGE # \_\_\_\_\_

SHEET 1 OF 2

SHOW A PLAN VIEW DRAWING DEPICTING THE CORNER MONUMENT AND SURROUNDING PHYSICAL FEATURES, INCLUDING THE EXCAVATION AREA AND DEPTH.

PLANNING & ZONING COMMITTEE ADOPTED THIS FORM ON 12/2/1982

CORNER CODE R-9(1)

585T

(B) Describe any record evidence, monument evidence, occupational evidence, testimonial evidence or any other material evidence you considered, and whether the monument was found or placed.

PK Nail found in good condition at the Southeast Corner of Section 20-1-13. (3) of the witness ties for the corner found are in very close proximity to tree trunks and are leaning away from the respective trees, giving the appearance of being disturbed. The fourth witness tie was found at the edge of a tilled field, bent and leaning.

C) Was the corner restored through acceptance of (1) an obliterated evidence location, or, (2) a found perpetuated location?

Location as found was accepted, referenced and perpetuated.

D) Describe any material discrepancy between the location of the corner as restored or reestablished and the location of that corner as previously restored or reestablished by distance and direction. Show the discrepancy on the plan view drawing under (a), above. Show the distances between the corner as previously restored or reestablished and (1) the corner as restored or reestablished, and (2) to at least 4 of the witness monuments shown on the drawing in (a), above.

The PK Nail location was referenced out prior to its removal during a construction project and replaced with a cotton gin pin after the completion of the project. New witness ties were also set. (See Map)

(E) Was the corner reestablished through lost corner proportionate methods? If so, show the method, including the directions and distances to other public land survey corners used as evidence or used for proportioning the corner location.

Lost corner proportionate methods not used in this instance

I, Jeffrey R. Garde, hereby certify that the corner location as identified by the corner code index was determined by me under my direction and control and that this U.S. Public Land Survey Monument Record is correct and complete to the best of my knowledge and belief.

SHEET 2 OF 2

CORNER CODE **R-9(1)**



A.E. 7.08 REQUIREMENT

NOVEMBER 3, 2008