

U.S. PUBLIC LAND SURVEY MONUMENT RECORD

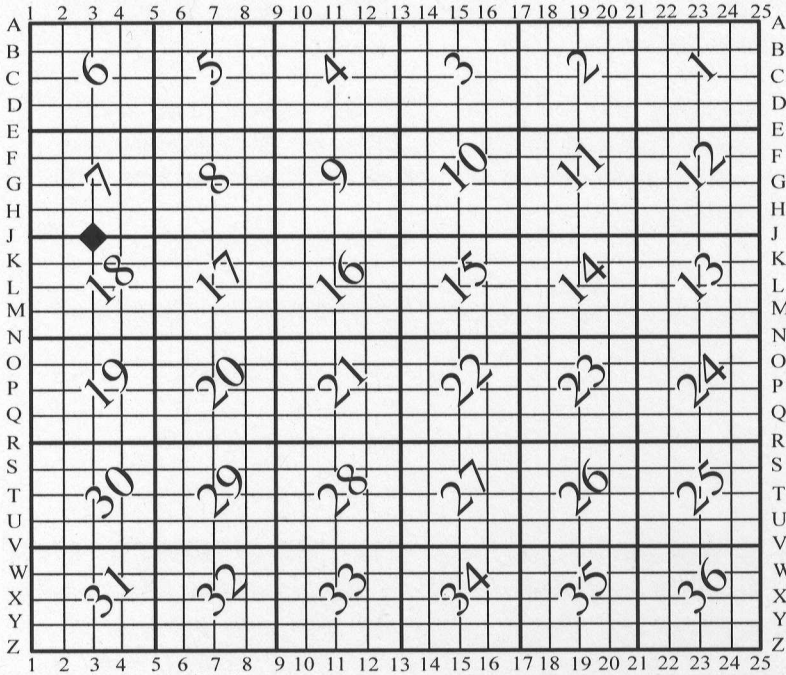
For Public Land Survey Corners In:

WI ADMINISTRATIVE CODE A-E 7.08 REQUIREMENT

T. 1 N. - R. 13 E. of the 4th P.M.

CORNER CODE INDEX

(PLACE "◆" SYMBOL AT PROPER PLSS CORNER LOCATION)



TURTLE TWP
ROCK COUNTY WI

COORDINATES

(GNSS DERIVED VIA WISCORS)

NORTHING: 222184.65 ELEV: N/A
EASTING: 498756.21

Hor. Datum: WISCRS, ROCK DATUM, (NA2011)

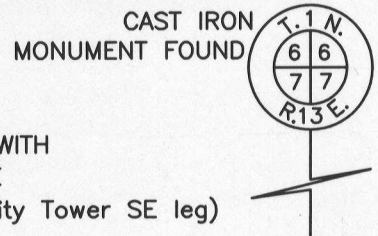
Vertical Datum: NAVD 88, (If applicable)

(a) LEGEND

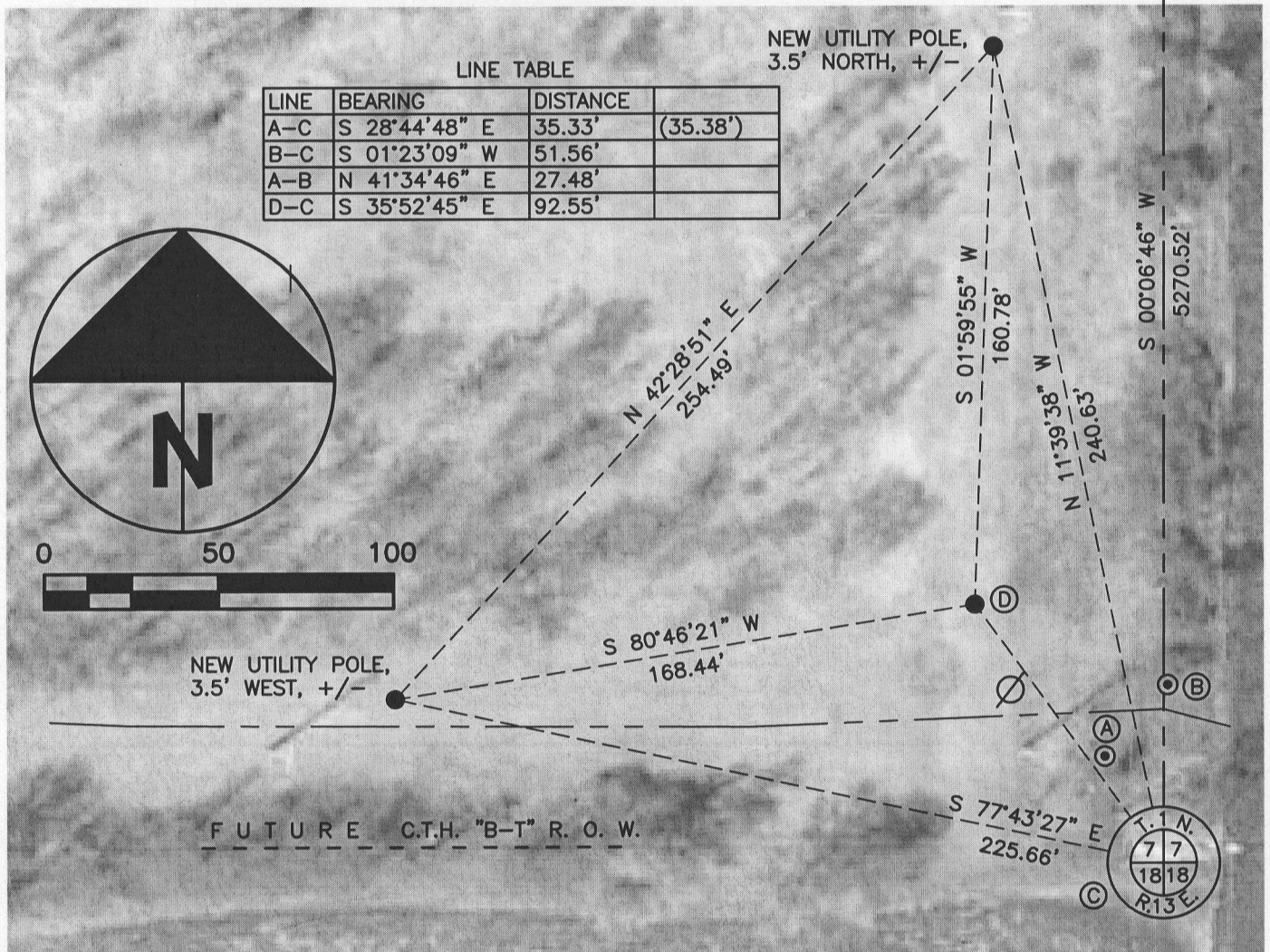
- - 3/4" x 24" REBAR SET W/RED CAP
- ⊙ - IRON REBAR FOUND
- (#) - PREVIOUS TIE-SHEET DIMENSION
- ⊘ - UTILITY POLE, (NEW AS OF 2014)



- FOUND 2" IRON PIPE WITH AN IRON REBAR INSIDE (1.5', +/-, SE of Utility Tower SE leg)



FUTURE R.O.W. LIMITS



B) Describe any record evidence, monument evidence, occupational evidence, testimonial evidence or any other material evidence you considered, and whether the monument was found or placed.

I found the pipe and two additional witnesses per the J-3 tie-sheet, (Barnes-1995). A ¾" rebar is inside and near the center of the 2" pipe. The witnesses are ¾" rebar not capped as indicated on Barnes tie-sheet however, the dimensions match those called by Barnes within expected tolerances. In addition, the N/S centerline of the section matches that as shown on the Town of Turtle E-3(1) tie-sheet, (Barnes-1995), within a second and 0.01'. I accepted the pipe, witnesses and set 3 additional ties per the map.

This location will see substantial construction beginning 2015 with the CTH BT project, aka, Inman Extension. The Consultant preparing the plans has coordinated with the office to assure the PLSS monument is perpetuated. The contract/pay items for the project will call for witness monuments being cast-in-place with disks. I will replace/reference the PLSS corner post-construction.

C) Was the corner restored through acceptance of (1) an obliterated evidence location, or, (2) a found perpetuated location?

Found perpetuated location.

D) Describe any material discrepancy between the location of the corner as restored or reestablished and the location of that corner as previously restored or reestablished by distance and direction. Show the discrepancy on the plan view drawing under (a), above. Show the distances between the corner as previously restored or reestablished and (1) the corner as restored or reestablished, and (2) to at least 4 of the witness monuments shown on the drawing in (a), above.

I did not find a discrepancy between the corner restored and a previously documented corner location. Discrepancy being defined as *disagreeing* with a corner location, *not* as noting dimensional differences between current/former tie sheets due to measuring methods. The current and *most recent* tie-sheet dimensions filed for the corner are noted.

(E) Was the corner reestablished through lost corner proportionate methods? If so, show the method, including the directions and distances to other public land survey corners used as evidence or used for proportioning the corner location.

N/A

I, Jason R. Houle, hereby certify that the corner location as identified by the corner code index was determined by me under my direction and control and that this U.S. Public Land Survey Monument Record is correct and complete to the best of my knowledge and belief.

CORNER CODE: J-3
(A.E. 7.08 REQUIREMENT)

