

PUBLIC LAND SURVEY MONUMENT RECORD

For Public Land Survey Corners in the

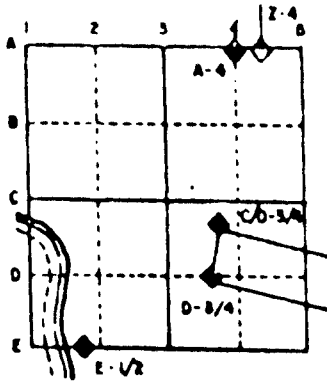
T. 1 N., R. 13 E.

CORNER CODE INDEX

	1	2	3	4	5	6	7	8	9	10	11	12	13	14	15	16	17	18	19	20	21	22	23	24	25	
A																										
B																										
C																										
D																										
E																										
F																										
G																										
H																										
I																										
J																										
K																										
L																										
M																										
N																										
O																										
P																										
Q																										
R																										
S																										
T																										
U																										
V																										
W																										
X																										
Y																										
Z																										

PLACE MONUMENT SYMBOL (◆) AT PROPER LOCATION ON ABOVE INDEX

EXAMPLE



TURTLE TWP
ROCK COUNTY WI

IF AVAILABLE
STATE PLANE COORDINATES

North (Y) 226,953,09 Elev. (Z) _____

East (X) 525,335,13 Zone _____

Hor. Datum COUNTY Vert. Datum _____

◆ CORNER MONUMENT

○ WITNESS MONUMENT

BEARINGS ARE BASED ON:

SHEET 1 OF 2
E23

CORNER CODE: _____

TU 532

(B) Describe any record evidence, monument evidence, occupational evidence, testimonial evidence or any other material evidence you considered, and whether the monument was found or placed.

- 1836 LYON SET QUARTER SECTION POST. BUR OAK 6 N49 1/2E 78 & BUR OAK 6 N55 1/2W 118. CALLS FOR 2628.45 TO SE & SW CORNERS OF SECTION 1.
- 1867 LOCKE VOL 1 PG 294 FOUND E. BT & STUMP OF W BT & OLD STAKE. BTS ARE RED OAK INSTEAD OF BR OAK. USED CORNER TO SUBDIVIDE SECTION 1. 2649.24 FROM CENTER OF SEC 1 TO W 1/4 COR OF SEC 1.
- 1882 HOLMES VOL 2 PG 354 FOUND NE BT & REMAINS OF STAKE SET NEW STAKE VAR 5-5 2653.2 TO CENTER OF SEC 1 & 2624.82 TO SW CORNER OF SEC 1. USED CORNER TO SUBDIVIDE SEC 1.
- 1970 BATTERMAN VOL 4 PG 476 FOUND ROTTED STAKE. SET 4"X30" C.I. IN PLACE & REFERENCED SAME.
- 1974 WI DOT R/W PLAT VOL 6 PG 55 & 120 CALLS FOR C.I. & NAD 27 COORDINATES OF 208,611.22;2,295,312.55

FOUND PK AND REFERENCE DISKS.

C) Was the corner restored through acceptance of (1) an obliterated evidence location, or, (2) a found perpetuated location?
ACCEPTED FOUND MONUMENT.

D) Describe any material discrepancy between the location of the corner as restored or reestablished and the location of that corner as previously restored or reestablished by distance and direction. Show the discrepancy on the plan view drawing under (a), above. Show the distances between the corner as previously restored or reestablished and (1) the corner as restored or reestablished, and (2) to at least 4 of the witness monuments shown on the drawing in (a), above.

(E) Was the corner reestablished through lost corner proportionate methods? If so, show the method, including the directions and distances to other public land survey corners used as evidence or used for proportioning the corner location.
NO

I, Donald Barnes, hereby certify that the corner points as identified by the corner code index were, in a field survey on, _____, 199____, established, re-established, monumented, re-monumented, recovered or restored as expressed below and in conformance with the regulations and rules as required in the current manual of survey instructions of the United States Department of Interior, Bureau of Land Management.

COUNTY SURVEYOR FILING DATA

Date of computer entry _____

Date microfilmed _____

Number of included sheets _____
CORNER CODE

seal

Donald Barnes
6/24/95

EMBOSS LAND SURVEYOR SEAL

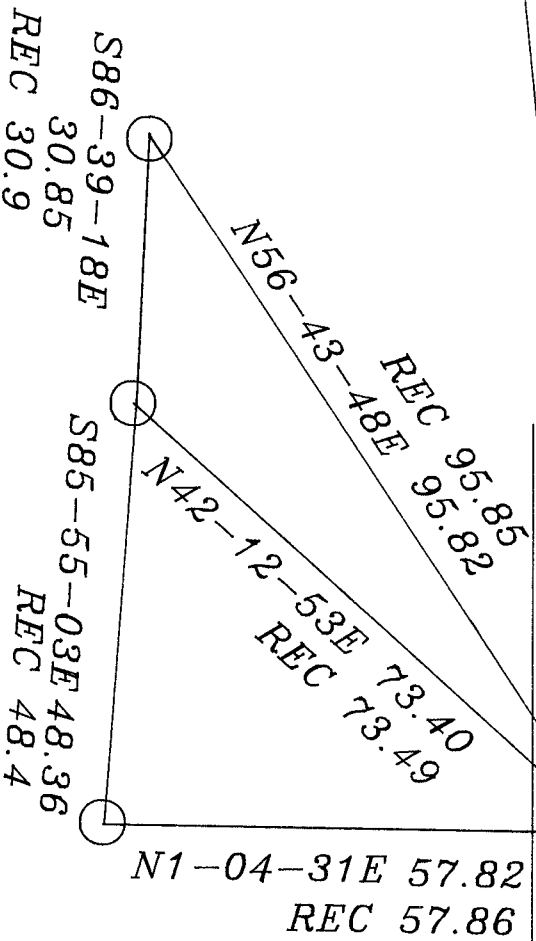
DISK SE COR BRIDGE
 B-53-109
 REC 922.06

I 43

BUSS RD

S84-32-43W 435.00

FD PK



Donald Barnes
 6/12/95

FD DISK IN CONC.
 POST

OBSERVATION SHEET #532

