

PUBLIC LAND SURVEY MONUMENT RECORD

For Public Land Survey Corners in the

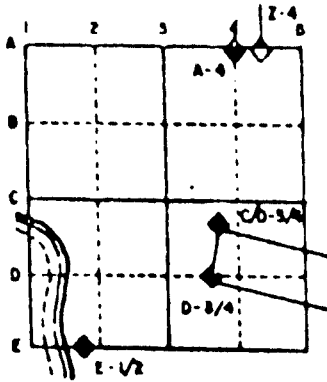
T. 1 N., R. 13 E.

CORNER CODE INDEX

	1	2	3	4	5	6	7	8	9	10	11	12	13	14	15	16	17	18	19	20	21	22	23	24	25
A																									
B																									
C																									
D																									
E																									
F																									
G																									
H																									
I																									
J																									
K																									
L																									
M																									
N																									
O																									
P																									
Q																									
R																									
S																									
T																									
U																									
V																									
W																									
X																									
Y																									
Z																									

PLACE MONUMENT SYMBOL (◈) AT PROPER LOCATION ON ABOVE INDEX

EXAMPLE



TURTLE TWP
ROCK COUNTY WI

IF AVAILABLE
STATE PLANE COORDINATES

North (Y) 216,338.26 Elev. (Z) _____

East (X) 525,277.87 Zone _____

Hor. Datum COUNTY Vert. Datum _____

◈ CORNER MONUMENT

○ WITNESS MONUMENT

BEARINGS ARE BASED ON:

TU572 S 1/4 13

(B) Describe any record evidence, monument evidence, occupational evidence, testimonial evidence or any other material evidence you considered, and whether the monument was found or placed.

1867 LOCKE VOL 1 PG 283 FOUND STUMPS OF BTS. SET ~~RED~~ ^{BUR} OAK STAKE. 2645.28 TO CENTER OF SECTION 24.

1876 RUGER VOL 2 PG 215 FOUND OLD STAKE & STUMPS OF BOTH BTS. STAKE CORRECT. DROVE NEW STAKE IN PLACE OF THE OLD ONE & SURROUNDED IT WITH 4 HH. 2664.42 TO SW 13, 2645.28 TO CENTER OF SECTION 24.

1914 CALDWELL VOL 3 PG 73 STATES NOTHING ABOUT MONUMENT. CALLS FOR 2650 TO SW CORNER OF SECTION 13. USED TO ESTABLISH CENTER OF SECTION 13 (HH 8X15X24). 1361.25 CENTER OF 13 SOUTH TO HH 6X8X8.

1975 BICKEL MAP #4724 SET 2 PIPE. 2664.84' TO SE & SW CORNERS OF SECTION 13. ANGLE 91-32-06 AT SW FROM W 1/4 TO S 1/4, ANGLE 88-02-53 AT S 1/4 FROM SW TO N 1/4, & ANGLE 88-45-45 AT W 1/4 FROM CENTER TO SW CORNERS OF SECTION 13. MAPS SHOWS CORNER IS 128' SOUTH OF FENCE INTERSECTION & 10' WEST OF N/S FENCE.

1976 LUENBERGER PLAT OF SURVEY. ANGLE 91-32-05 AT SW FROM W 1/4 TO S 1/4 CORNERS OF SECTION 13.

FOUND 2" PIPE. REPLACED WITH POLY. MON. PLACED CARSONITE POST ON WEST SIDE.

C) Was the corner restored through acceptance of (1) an obliterated evidence location, or, (2) a found perpetuated location?
ACCEPTED FOUND PERPETUATED LOCATION

D) Describe any material discrepancy between the location of the corner as restored or reestablished and the location of that corner as previously restored or reestablished by distance and direction. Show the discrepancy on the plan view drawing under (a), above. Show the distances between the corner as previously restored or reestablished and (1) the corner as restored or reestablished, and (2) to at least 4 of the witness monuments shown on the drawing in (a), above.

(E) Was the corner reestablished through lost corner proportionate methods? If so, show the method, including the directions and distances to other public land survey corners used as evidence or used for proportioning the corner location.
NO

I, Donald Barnes, hereby certify that the corner points as identified by the corner code index were, in a field survey on, _____, 1994, established, re-established, monumented, re-monumented, recovered or restored as expressed below and in conformance with the regulations and rules as required in the current manual of survey instructions of the United States Department of Interior, Bureau of Land Management.

seal

Donald Barnes
6/12/95

AFFIX YOUR LAND SURVEYOR SEAL

COUNTY SURVEYOR FILING DATA

Date of computer entry _____

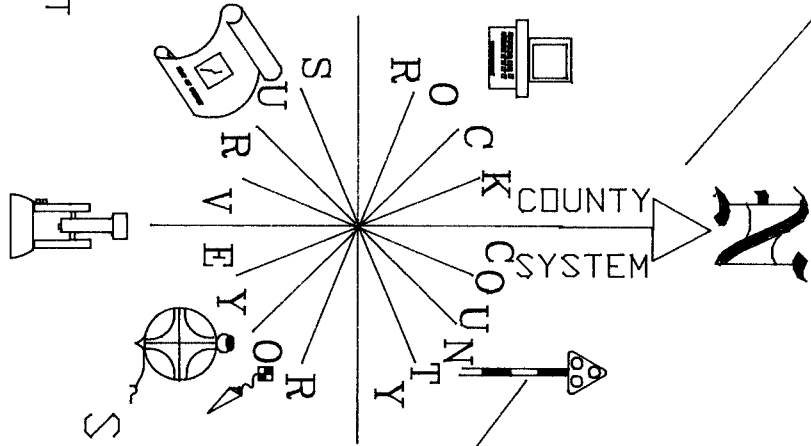
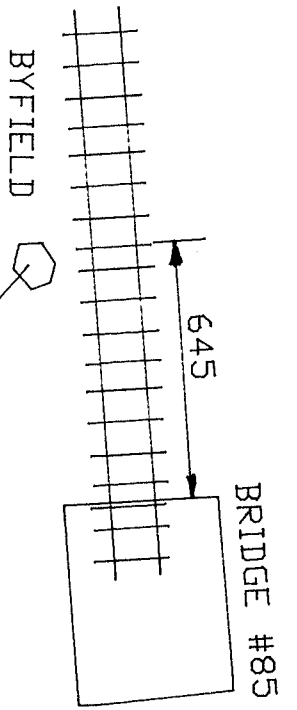
Date microfilmed _____

Number of included sheets _____
CORNER CODE

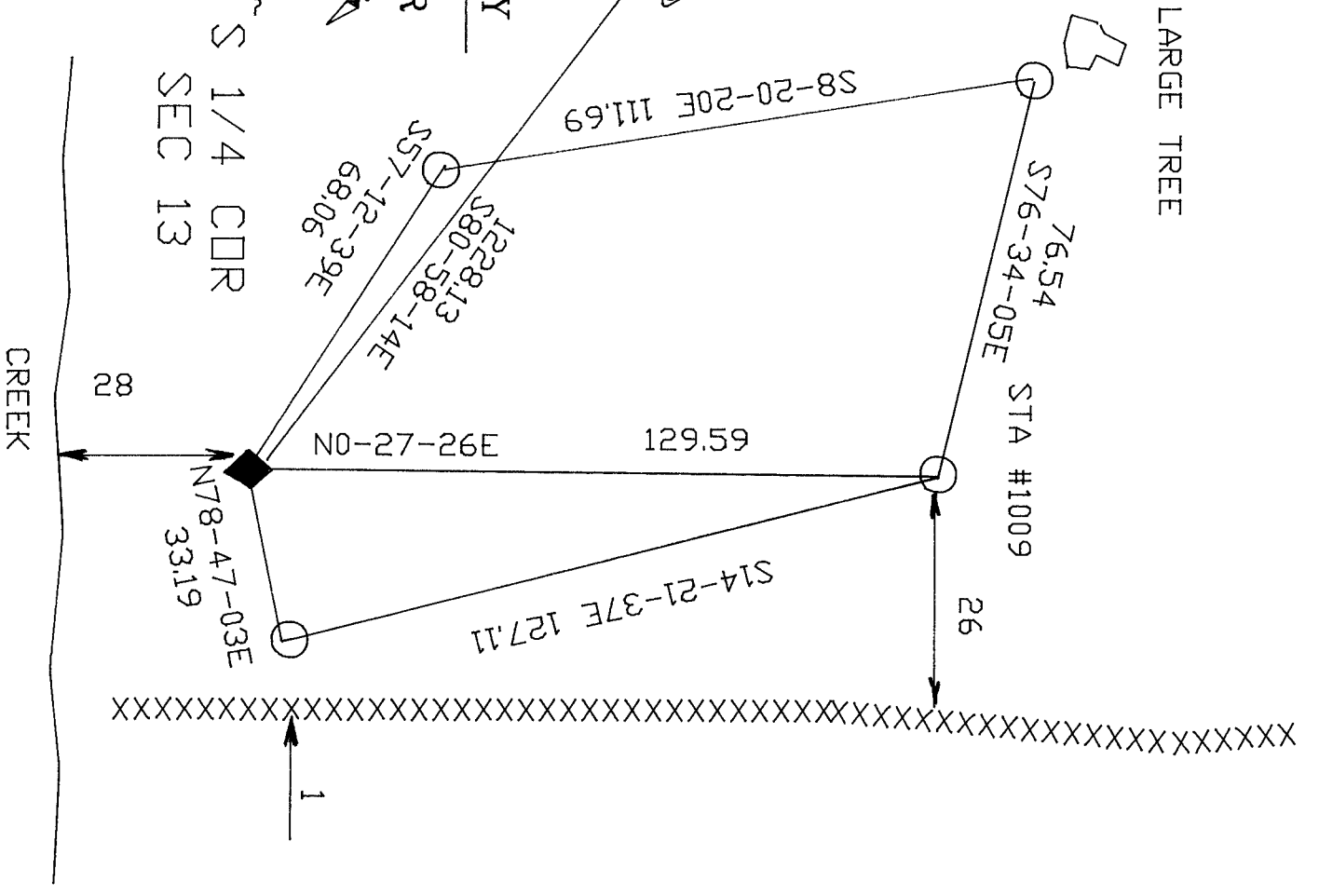
○ 3/4X24 RERDD WITH PLASTIC RING.

○ FOUND 2" PIPE. REPLACED WITH POLY. MONUMENT PLACED CARSDONITE POST ON WEST SIDE.

FOUND DISK IN CONCRETE MONUMENT PLACED CARSDONITE POST



LARGE TREE



Donald Barnes
6/12/95