

# PUBLIC LAND SURVEY MONUMENT RECORD

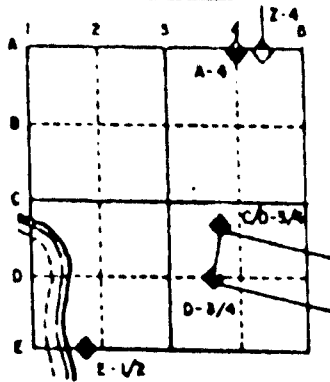
For Public Land Survey Corners in the

T. 2 N., R. 13 E.

## CORNER CODE INDEX

	1	2	3	4	5	6	7	8	9	10	11	12	13	14	15	16	17	18	19	20	21	22	23	24	25
A																									
B																									
C																									
D																									
E																									
F																									
G																									
H																									
I																									
J																									
K																									
L																									
M																									
N																									
O																									
P																									
Q																									
R																									
S																									
T																									
U																									
V																									
W																									
X																									
Y																									

### EXAMPLE



TURTLE TWP  
ROCK COUNTY WI

IF AVAILABLE  
STATE PLANE COORDINATES

North (Y) 230,154.38 Elev. (Z) \_\_\_\_\_

East (X) 501,465.27 Zone \_\_\_\_\_

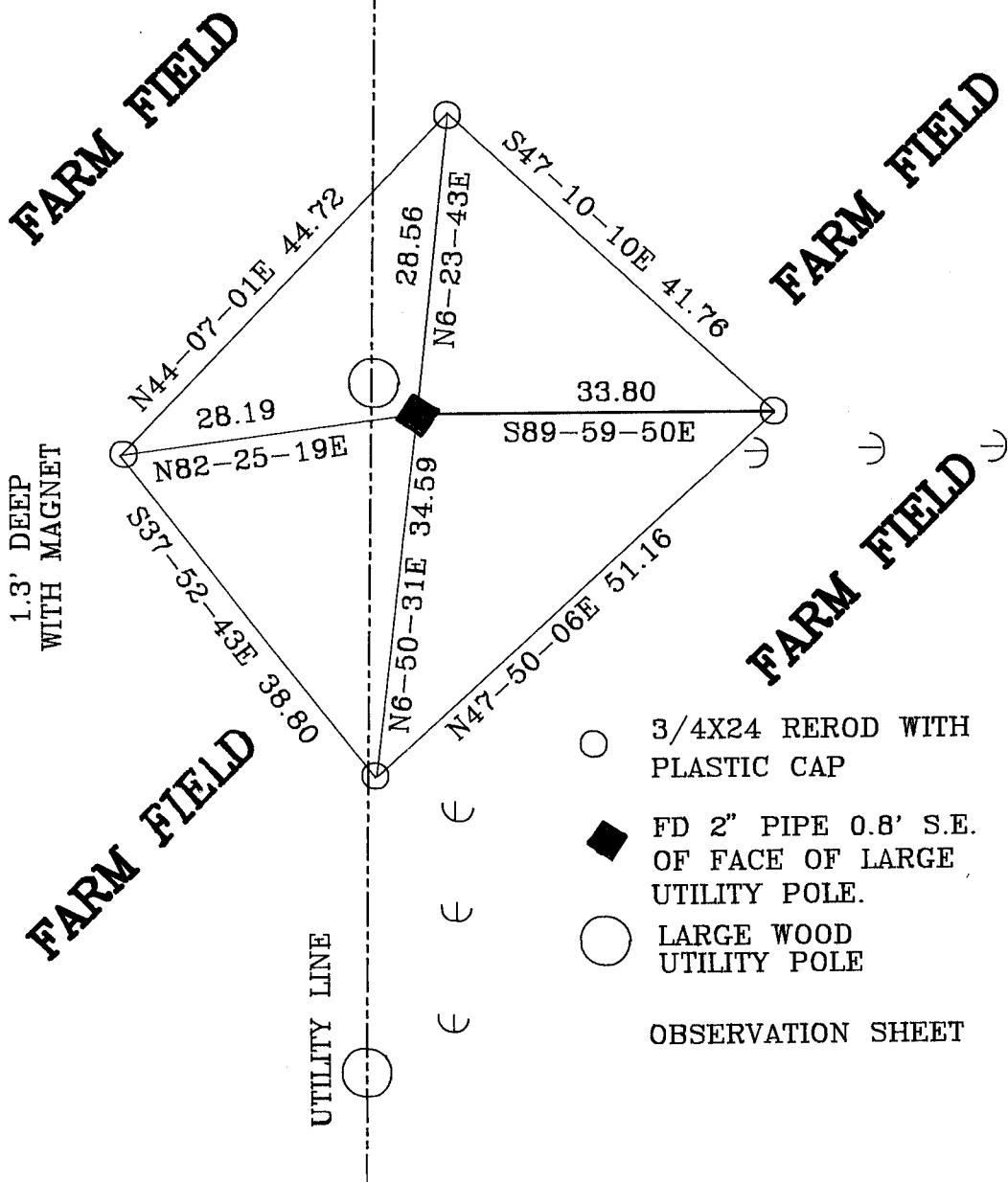
Hor. Datum COUNTY Vert. Datum \_\_\_\_\_

PLACE MONUMENT SYMBOL (◊) AT PROPER  
LOCATION ON ABOVE INDEX

◊ CORNER MONUMENT

○ WITNESS MONUMENT

BEARINGS ARE BASED ON: ASSUMED



○ 3/4X24 REROD WITH PLASTIC CAP

◊ FD 2" PIPE 0.8' S.E. OF FACE OF LARGE UTILITY POLE.

○ LARGE WOOD UTILITY POLE

OBSERVATION SHEET

SHEET 1 OF 2

CORNER CODE: C5

(B) Describe any record evidence, monument evidence, occupational evidence, testimonial evidence or any other material evidence you considered, and whether the monument was found or placed.

1865 LOCKE VOL 1 PG 235 FOUND STAKE IN EDGE OF SOD FENCE. SUBDIVIDED SE 1/4 OF SECTION 6.

1853 Mc VEAN VOL 1 PG 19 USED CORNER TO SUBDIVIDE SECTION 5.

1882 HOLMES VOL 2 PG 357 CALLS FOR A FENCE POST. SUBDIVIDED SECTION 6.

FOUND 2" PIPE THAT WAS IN HARMONY WITH PIPES FOUND AT THE CENTERS OF SECTIONS 5 & 6. PLACED CARSONITE POST NEXT TO PIPE.

C) Was the corner restored through acceptance of (1) an obliterated evidence location, or, (2) a found perpetuated location?

ACCEPTED FOUND PERPETUATED LOCATION.

D) Describe any material discrepancy between the location of the corner as restored or reestablished and the location of that corner as previously restored or reestablished by distance and direction. Show the discrepancy on the plan view drawing under (a), above. Show the distances between the corner as previously restored or reestablished and (1) the corner as restored or reestablished, and (2) to at least 4 of the witness monuments shown on the drawing in (a), above.

(E) Was the corner reestablished through lost corner proportionate methods? If so, show the method, including the directions and distances to other public land survey corners used as evidence or used for proportioning the corner location.

NO

I, Donald Barnes, hereby certify that the corner points as identified by the corner code index were, in a field survey on, May 16, 1994, established, re-established, monumented, re-monumented, recovered or restored as expressed below and in conformance with the regulations and rules as required in the current manual of survey instructions of the United States Department of Interior, Bureau of Land Management.

seal  
*Donald Barnes*  
July 7, 1994

COUNTY SURVEYOR FILING DATA

Date of computer entry \_\_\_\_\_

Date microfilmed \_\_\_\_\_

Number of included sheets 1  
CORNER CODE

AFFIX YOUR LAND SURVEYOR SEAL

1 OF 2

C5

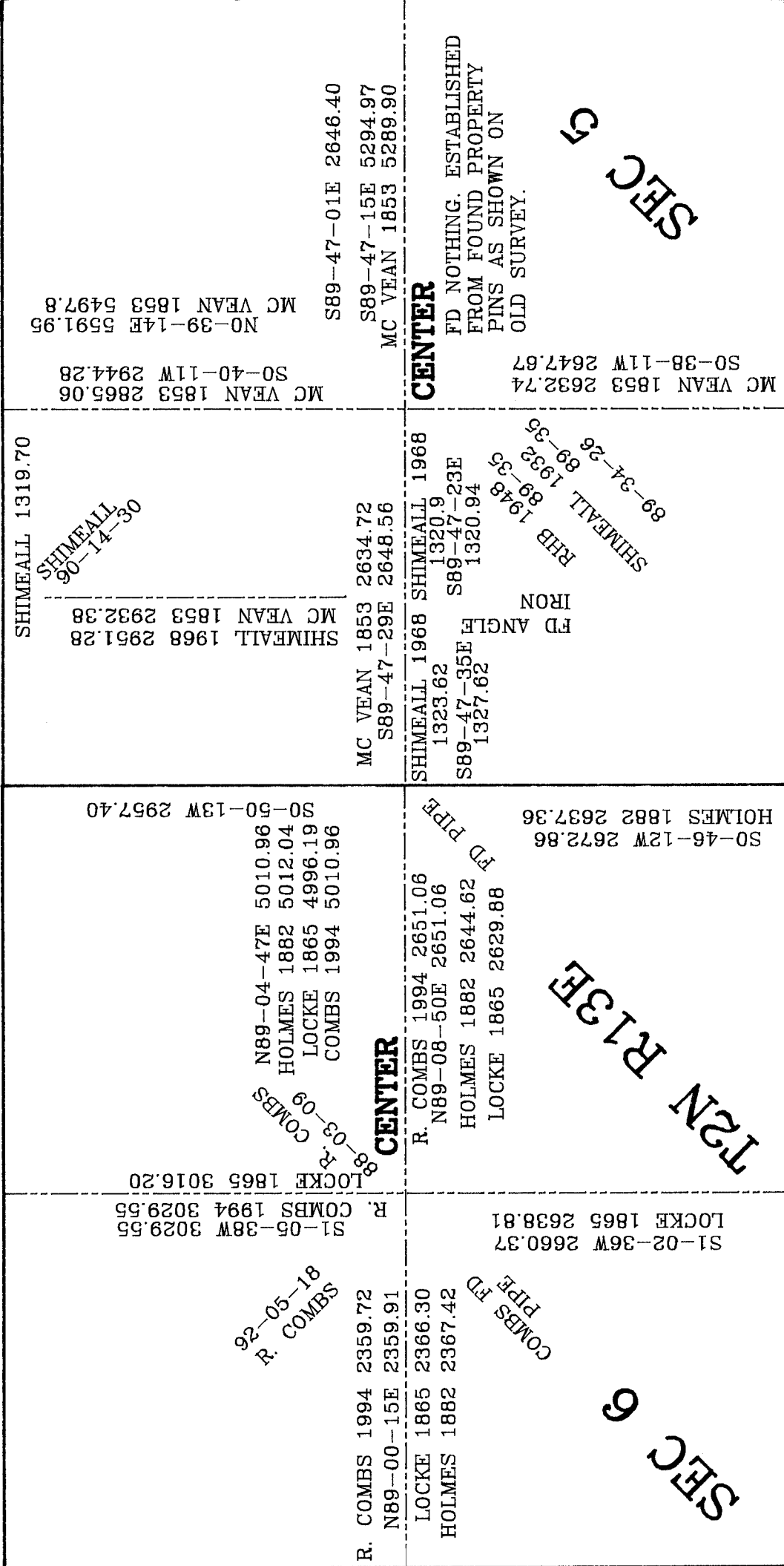
Ronald Barnes  
July 7, 1994

BEARINGS & DISTANCES ARE BASED ON  
DATA COMPILED FROM TURTLE TWP PROJECT.

LOCKE 1865 2432.10 N 1/4  
R. COMBS 1994 2427.16 COR  
S89-38-25E 2427.40  
LOCKE 1865 2640.00  
S89-17-41E 2636.32  
BATTERMAN 1964 2639.19  
S89-09-20E 2639.85

NW COR

NE COR



5