

U.S. PUBLIC LAND SURVEY MONUMENT RECORD

For Public Land Survey Corners in the

T. 1 N., R. 13 E

CORNER CODE INDEX

TURTLE TWP
ROCK COUNTY WI

A	1	2	3	4	5	6	7	8	9	10	11	12	13	14	15	16	17	18	19	20	21	22	23	24	25	26	27	28	29	30	31	32	33	34	35	36			
B																																							
C																																							
D																																							
E																																							
F																																							
G																																							
H																																							
I																																							
J																																							
K																																							
L																																							
M																																							
N																																							
O																																							
P																																							
Q																																							
R																																							
S																																							
T																																							
U																																							
V																																							
W																																							
X																																							
Y																																							
Z																																							

IF AVAILABLE
ROCK COUNTY COORDINATES PREFERRED

North _____ Elev. _____

East _____

Hor. Datum _____ Vert. Datum _____

GPS (x) _____ TRAVERSE (x) _____

BASED ON THE FOLLOWING CONTROL:

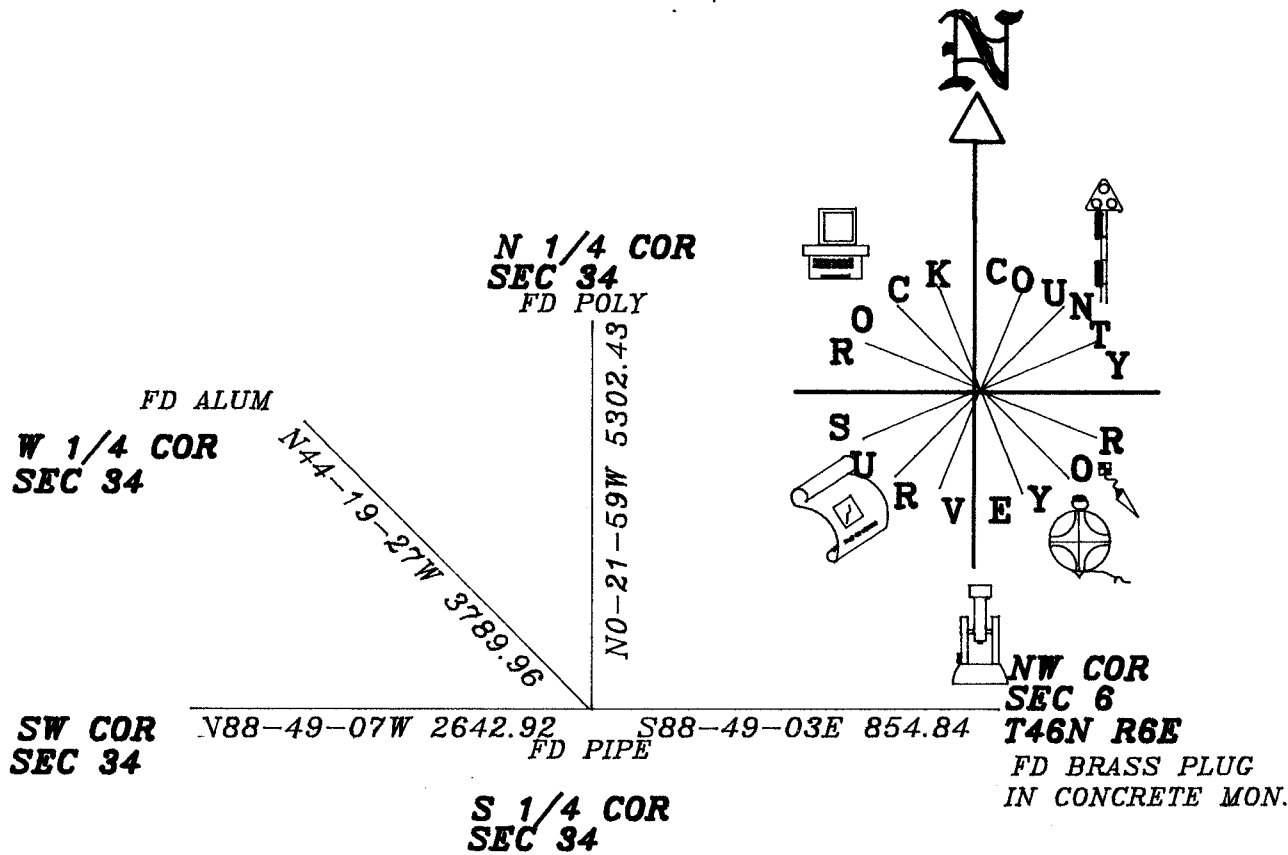
PLACE MONUMENT SYMBOL \blacklozenge AT PROPER LOCATION ON ABOVE INDEX

\diamond CORNER MONUMENT

\circ WITNESS MONUMENT

(a)

BEARINGS ARE BASED ON:



FIELD BOOK _____ PAGE # _____
SHOW A PLAN VIEW DRAWING DEPICTING THE CORNER MONUMENT AND SURROUNDING PHYSICAL FEATURES, INCLUDING THE EXCAVATION AREA AND DEPTH. THE CORNER MONUMENT SHALL HAVE THE FOLLOWING CHARACTERISTICS: 1) HAVE A LEAST TWO PREDETERMINED BREAK-OFF POINTS. 2) IF BROKEN LEAVE A PERMANENTLY MAGNETIZED REMNANT AT THE ORIGINAL POINT. 3) MUST BE EXTENDABLE. 4) THE CAP IS INSCRIBED "ROCK COUNTY SURVEY MONUMENT - PENALTY FOR DISTURBING MARKER". 5) OR AN EXISTING CUT LIMESTONE. AN IRON PIPE 1 1/2" 4' (MINIMUM) MAY BE USED IN AREAS WHERE GROUND WATER IS WITHIN ONE FOOT OF THE SURFACE. IF THE CORNER IS OCCUPIED BY AN IMPROVEMENT (HOLE, BURIED CABLE, ETC) AN DURABLE, DISTINCT MONUMENT MAY BE USED. CORNERS SHALL BE REFERENCED WITH AT LEAST 4 DURABLE WITNESS MONUMENTS. WITNESS MONUMENTS SHALL BE MADE OF CONCRETE, NATURAL STONE, IRON OR OTHER EQUALLY DURABLE MATERIAL EXCEPT WOOD. DESCRIBE THE CORNER AND THE WITNESS MONUMENTS.

CLAIMING & ZONING COMMITTEE ADOPTED THE ABOVE FORM ON 12/2/1992
WI ADMINISTRATIVE CODE A-E 7.09 REQUIREMENT

SHEET 1 OF 1

CORNER CODE

215

(B) Describe any record evidence, monument evidence, occupational evidence, testimonial evidence or any other material evidence you considered, and whether the monument was found or placed.

1833 LYONS SET POST FOR 1/4 SECTION CORNER. BUR OAK 17 S65E 133. CALLS FOR 9.9' WIDE STREAM RUNNING SW. THE LEFT BANK (WEST BANK) IS 49.5' EAST OF THE 1/4 CORNER.

1978 BARNES VOL 5 PG 461 CORNER WAS PROBABLY DESTROYED BY THE CONSTRUCTION OF THE NEW BRIDGE. SET 1 1/2X6' IRON PIPE ON LINE WITH THE NE CORNER SEC 1 T46N R2E & THE N 1/4 COR SEC 1. T46N R2E AT SINGLE PROPORTIONATE DISTANCE. 2 EAST OF THE WEST BANK.

1978 BARNES VOL 5 PG 456 2642.90 TO SW COR SEC 34, 854.84 TO THE NE COR SEC 1, 2642.90 TO SE COR SEC 34, & AN ANGLE OF 180-22-11 AT THE NE COR SEC 1 FROM THE S 1/4 COR SEC 34 TO THE SE COR SEC 34.

1979 BARNES VOL 5 PG 539 & VOL 6 PG 413 FOUND PIPE 2642.90 TO SW COR SEC 34 & 854.84 TO NE COR SEC 1.

FOUND PIPE.

C) Was the corner restored through acceptance of (1) an obliterated evidence location, or, (2) a found perpetuated location?

ACCEPTED FOUND PERPETUATED LOCATION.

D) Describe any material discrepancy between the location of the corner as restored or reestablished and the location of that corner as previously restored or reestablished by distance and direction. Show the discrepancy on the plan view drawing under (a), above. Show the distances between the corner as previously restored or reestablished and (1) the corner as restored or reestablished, and (2) to at least 4 of the witness monuments shown on the drawing in (a), above.

(E) Was the corner reestablished through lost corner proportionate methods? If so, show the method, including the directions and distances to other public land survey corners used as evidence or used for proportioning the corner location.

NO

I, Donald Barnes, hereby certify that the corner points as identified by the corner code index were, in a field survey on, 1994, established, re-established, monumented, re-monumented, recovered or restored as expressed below and in conformance with the regulations and rules as required in the current manual of survey instructions of the United States Department of Interior, Bureau of Land Management.

seal



EMBOSS LAND SURVEYOR SEAL

Oct 6, 1995

COUNTY SURVEYOR FILING DATA

Date of computer entry _____

Date microfilmed _____

Number of included sheets _____
CORNER CODE Z15

A-E 7.08 REQUIREMENT

Z15