

U.S. PUBLIC LAND SURVEY MONUMENT RECORD

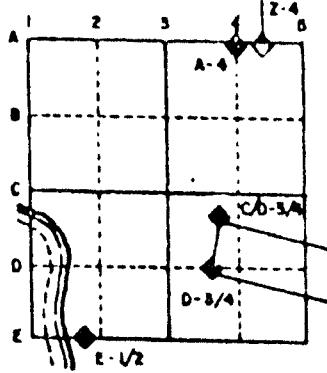
For Public Land Survey Corners in the
T. 1 N., R. 13 E.

CORNER CODE INDEX

	1	2	3	4	5	6	7	8	9	10	11	12	13	14	15	16	17	18	19	20	21	22	23	24	25
A																									
B																									
C	6																								
D		5																							
E			4																						
F				3																					
G					2																				
H																									
I	7																								
J		8																							
K			9																						
L				10																					
M					11																				
N						12																			
O																									
P	18																								
Q		17																							
R			16																						
S				15																					
T					14																				
U						13																			
V							12																		
W								11																	
X									10																
Y										9															
Z											8														

PLACE MONUMENT SYMBOL (◈) AT PROPER LOCATION ON ABOVE INDEX

EXAMPLE



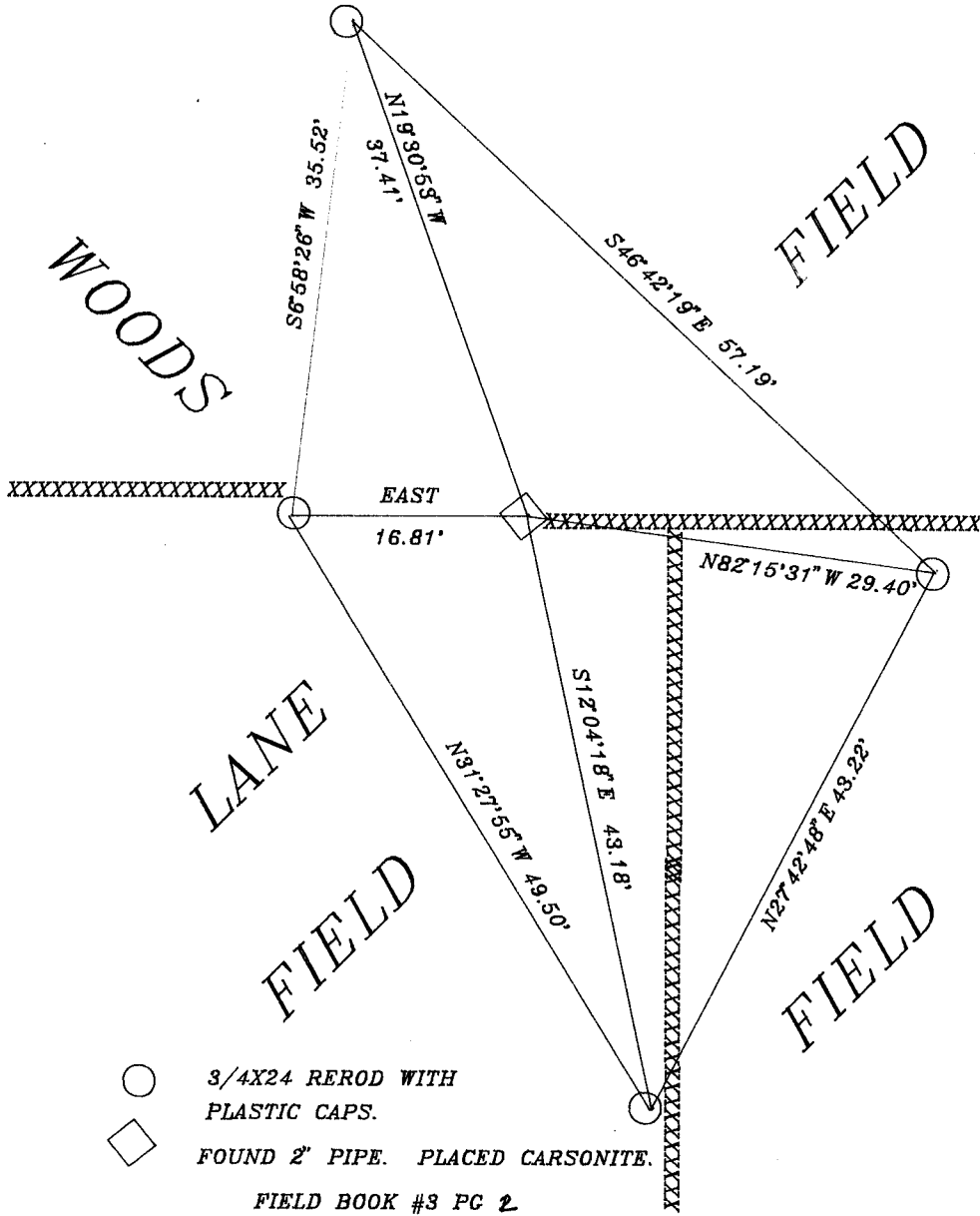
TURTLE TWP
ROCK COUNTY WI

IF AVAILABLE
STATE PLANE COORDINATES

North (Y) 208,927.53 Elevation (Z) _____
 East (X) 501,371.86 Zone _____
 Hor. Datum COUNTY Vert. Datum _____

◈ CORNER MONUMENT ○ WITNESS MONUMENT

BEARINGS ARE BASED ON: ASSUMER



○ 3/4X24 REROD WITH PLASTIC CAPS.
 ◈ FOUND 2' PIPE. PLACED CARSONITE.
 FIELD BOOK #3 PG 2

SHEET ___ OF ___

CORNER CODE: T5

(B) Describe any record evidence, monument evidence, occupational evidence, testimonial evidence or any other material evidence you considered, and whether the monument was found or placed.

1859 HOBART VOL 1 PG 106 BLACK OAK 3 S95W 21,2638.68 TO NE COR SEC 20.
EAST LINE OF SW 1/4 SEC 30 S89-58E
1859 HOBART VOL 1 PG 108 PLUM 4 N89E 140, S89-21E 2657.16 TO CENTER SEC
29, S0-40E 2641.32 TO SW COR SEC 29.
1859 HOBART VOL 1 PG 121 DOUBLE POPLAR 8 N80E 72.5, S0-42E 2637.36 TO
SE COR SEC 30.
1885 RUGER VOL 2 PG 295 FUND REMAINS OF OLD STAKE. SET LIMESTONE
20X12X5, 2646.93 VAR 3-29 TO CENTER SEC 30, 5112.86 TO W 1/4 COR SEC
30, 2647.92 TO NE COR SEC 30.
1911 KERCH VOL 3 PG 64 FOUND STONE & STAKE BY RUGER. SET 2" GAS PIPE
36", 2662 TO CENTER SEC 29, 2650.1 TO NE COR SEC 30, ANGLE OF 90-40
AT NE COR SEC 30 FROM E 1/4 COR SEC 30 TO N 1/4 COR SEC 30, & ANGLE
OF 89-04 AT NW COR SEC 29 FROM N 1/4 COR SEC 29 TO W 1/4 COR SEC
29.

FOUND 2" PIPE & PLACED CARSONITE POST NEXT TO PIPE.

C) Was the corner restored through acceptance of (1) an obliterated evidence location, or, (2) a found perpetuated location?
ACCEPTED FOUND PERPETUATED LOCATION.

D) Describe any material discrepancy between the location of the corner as restored or reestablished and the location of that corner as previously restored or reestablished by distance and direction. Show the discrepancy on the plan view drawing under (a), above. Show the distances between the corner as previously restored or reestablished and (1) the corner as restored or reestablished, and (2) to at least 4 of the witness monuments shown on the drawing in (a), above.

(E) Was the corner reestablished through lost corner proportionate methods? If so, show the method, including the directions and distances to other public land survey corners used as evidence or used for proportioning the corner location.
NO

I, Donald Barnes, hereby certify that the corner points as identified by the corner code index were, in a field survey on, 1995, established, re-established, monumented, re-monumented, recovered or restored as expressed below and in conformance with the regulations and rules as required in the current manual of survey instructions of the United States Department of Interior, Bureau of Land Management.

seal.
Donald Barnes

7/14/95

EMBOSS LAND SURVEYOR SEAL

COUNTY SURVEYOR FILING DATA

Date of computer entry _____

Date microfilmed _____

Number of included sheets _____
CORNER CODE

A-E 7.08 REQUIREMENT