

U. S. PUBLIC LAND SURVEY MONUMENT RECORD

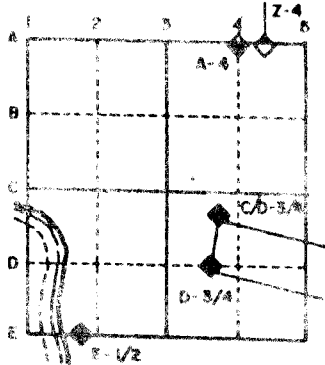
For Public Land Survey Corners in the
T. 1 N., R. 13 E.

CORNER CODE INDEX

	1	2	3	4	5	6	7	8	9	10	11	12	13	14	15	16	17	18	19	20	21	22	23	24	25
A																									
B																									
C	6																								
D																									
E																									
F																									
G																									
H	7																								
I																									
J																									
K																									
L	18																								
M																									
N																									
O																									
P																									
Q	19																								
R																									
S																									
T	30																								
U																									
V																									
W																									
X	31																								
Y																									
Z																									

PLACE MONUMENT SYMBOL (◆) AT PROPER LOCATION ON ABOVE INDEX

EXAMPLE



TURTLE TWP
ROCK COUNTY WI

IF AVAILABLE
STATE PLANE COORDINATES

North (Y) _____ Eleve. (Z) _____
 East (X) _____ Zone _____
 Hor. Datum _____ Vert. Datum _____

(a.)

◆ CORNER MONUMENT

○ WITNESS MONUMENT

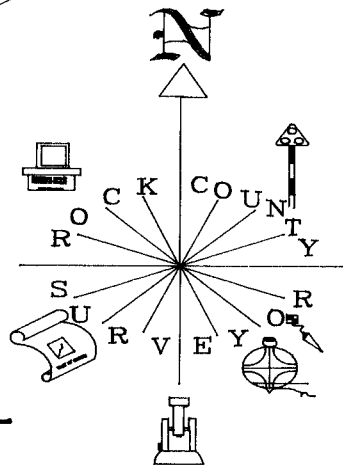
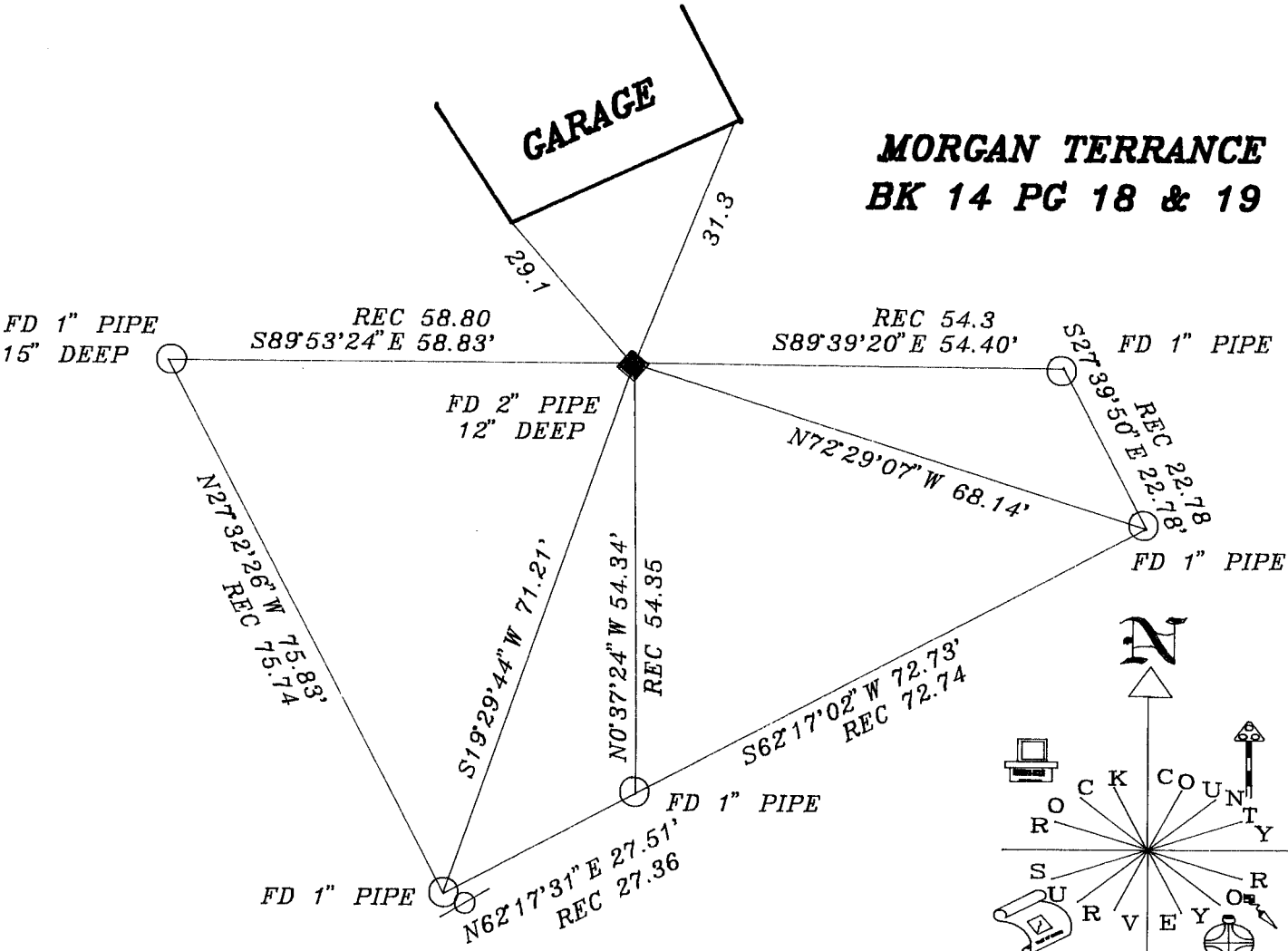
BEARINGS ARE BASED ON:

FIELD BOOK 1 PAGE # 2

SHOW A PLAN VIEW DRAWING DEPICTING THE CORNER MONUMENT AND SURROUNDING PHYSICAL FEATURES, INCLUDING THE EXCAVATION AREA AND DEPTH. THE CORNER MONUMENT SHALL HAVE THE FOLLOWING CHARACTERISTICS: 1) HAVE AT LEAST TWO PREDETERMINED BREAK-OFF POINTS. 2) IF BROKEN, LEAVE A PERMANENTLY MAGNETIZED REMNANT AT THE ORIGINAL POINT. 3) MUST BE EXTENDABLE. 4) THE CAP IS INSCRIBED: ROCK COUNTY SURVEY MONUMENT - PENALTY FOR DISTURBING MARKER. 5) OR AN EXISTING CUT LIMESTONE. AN IRON PIPE 1 1/2" x 4'0" (MINIMUM) MAY BE USED IN AREAS WHERE GROUND WATER IS WITHIN ONE FOOT OF THE SURFACE. IF THE CORNER IS OCCUPIED BY AN IMPROVEMENT (MANHOLE, BURIED CABLE, ETC.) ANY DURABLE, DISTINCT MONUMENT MAY BE USED. CORNERS SHALL BE REFERENCED WITH AT LEAST 4 DURABLE WITNESS MONUMENTS. WITNESS MONUMENTS SHALL BE MADE OF CONCRETE, NATURAL STONE, IRON OR OTHER EQUALLY DURABLE MATERIAL, EXCEPT WOOD. DESCRIBE THE CORNER AND THE WITNESS MONUMENTS.

CORNER CODE:
R 5

**MORGAN TERRANCE
BK 14 PG 18 & 19**



RIDGE RD.

VISTA DR

ANGLE SHEET FOR STA "733"

Donald Barnes
7/15/95

R 5

TU583

(B) Describe any record evidence, monument evidence, occupational evidence, testimonial evidence or any other material evidence you considered, and whether the monument was found or placed.

1836 LYON SET POST CORNER TO SECTIONS 19,20,29,&30 BUR OAK 6 N66W 42.9,HICKORY 7 S70 1/2W 169.6'. CALLS FOR 2640 TO E 1/4 COR SEC 30,2640 TO E 1/4 COR SEC 19,2640 TO S 1/4 COR SEC 20,& 2640 TO S 1/4 COR SEC 19.

1911 KERCH VOL 3 PG 64 CORNER LOST. FOUND STUMP OF SWBT & WHERE NWBT STOOD. SET 2" GAS PIPE. CALLS FOR 2652.4 TO S 1/4 COR SEC 19,2647.8 TO S 1/4 COR SEC 20,2649.3 TO W 1/4 COR SEC 20,2650.11 TO W 1/4 COR SEC 29,ANGLE OF 90-40 FROM E 1/4 COR SEC 30 TO S 1/4 COR SEC 19,ANGLE OF 89-04 FROM N 1/4 COR SEC 29 TO W 1/4 COR SEC 29,89-38-15 FROM W 1/4 COR SEC 20 TO S 1/4 COR SEC 20.

FOUND 2" PIPE 12" DEEP. 2651.46 (REC 2652.4) TO S 1/4 COR SEC 19,2647.82 (REC 2647.8) TO S 1/4 COR SEC 20,2648.36 (REC 2649.3) TO W 1/4 COR SEC 20,2649.76 (REC 2650.11) TO W 1/4 COR SEC 19,ANGLE OF 90-40-06 (REC 90-40) FROM E 1/4 COR SEC 30 TO S 1/4 COR SEC 19, ANGLE OF 89-03-34 (REC 89-04) FROM N 1/4 COR SEC 29 TO W 1/4 COR SEC 29, & AN ANGLE OF 89-37-44 (REC 89-38-15) FROM W 1/4 COR SEC 20 TO S 1/4 COR SEC 20.

C) Was the corner restored through acceptance of (1) an obliterated evidence location, or, (2) a found perpetuated location?

ACCEPTED FOUND PERPETUATED LOCATION

D) Describe any material discrepancy between the location of the corner as restored or reestablished and the location of that corner as previously restored or reestablished by distance and direction. Show the discrepancy on the plan view drawing under (a), above. Show the distances between the corner as previously restored or reestablished and (1) the corner as restored or reestablished, and (2) to at least 4 of the witness monuments shown on the drawing in (a), above.

(E) Was the corner reestablished through lost corner proportionate methods? If so, show the method, including the directions and distances to other public land survey corners used as evidence or used for proportioning the corner location.

NO

I, Donald Barnes, hereby certify that the corner points as identified by the corner code index were, in a field survey on,1994, established, re-established, monumented, re-monumented, recovered or restored as expressed below and in conformance with the regulations and rules as required in the current manual of survey instructions of the United States Department of Interior, Bureau of Land Management.

seal

Donald Barnes
6/13/95

EMBOSS LAND SURVEYOR SEAL

COUNTY SURVEYOR FILING DATA

Date of computer entry _____

Date microfilmed _____

Number of included sheets _____

CORNER CODE

A-E 7.08 REQUIREMENT

RS