

PUBLIC LAND SURVEY MONUMENT RECORD

For Public Land Survey Corners in the

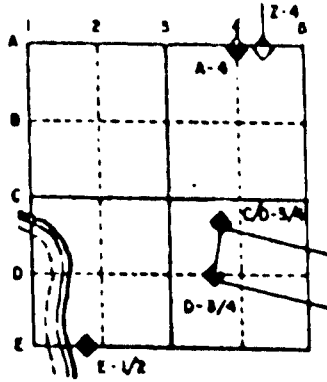
T. 1 N., R. 13E

CORNER CODE INDEX

	1	2	3	4	5	6	7	8	9	10	11	12	13	14	15	16	17	18	19	20	21	22	23	24	25
A																									
B																									
C																									
D																									
E																									
F																									
G																									
H																									
I																									
J																									
K																									
L																									
M																									
N																									
O																									
P																									
Q																									
R																									
S																									
T																									
U																									
V																									
W																									
X																									
Y																									
Z																									

PLACE MONUMENT SYMBOL (◆) AT PROPER LOCATION ON ABOVE INDEX

EXAMPLE



TURTLE TWP
ROCK COUNTY WI

IF AVAILABLE
STATE PLANE COORDINATES

North (Y) _____ Elev. (Z) _____
 East (X) _____ Zone _____
 Hor. Datum _____ Vert. Datum _____

◆ CORNER MONUMENT

○ WITNESS MONUMENT

BEARINGS ARE BASED ON:

TU535 E 1/4 COR SEC 7

(B) Describe any record evidence, monument evidence, occupational evidence, testimonial evidence or any other material evidence you considered, and whether the monument was found or placed.

1929 BATTERMAN MAP #4658 FOUND GAS PIPE. 2625.75' TO CENTER OF SECTION 7, EASTERLY 1486.31' TO PIPE IN CENTER OF ROAD, EASTERLY 2629.71 TO IRON ON E/W CENTER OF SECTION 8, 2663.1 TO SE CORNER OF SECTION 7, 2646.7' FROM SE TO S 1/4 CORNER OF SEC 7, 2639.2 FROM S 1/4 CORNER TO CENTER OF SECTION 7, ANGLE 91-58 AT CENTER OF SEC 7 FROM E 1/4 TO S 1/4 CORNERS OF SECTION 7, ANGLE 89-33 AT S 1/4 COR FROM CENTER TO SE CORNERS OF SECTION 7, ANGLE 90-34 AT SE CORNER OF SECTION 7 FROM S 1/4 CORNER TO E 1/4 CORNERS OF SECTION 7, & ANGLE 88-58 AT E 1/4 CORNER OF SEC 7 FROM E/W CENTER OF SECTION 8 TO SE CORNER OF SEC 7

1929 BATTERMAN VOL 3 PG 176 2625.75 TO CENTER OF SECTION 7 (GAS PIPE), 2663.1 TO SE CORNER OF SECTION 7, ANGLE 90-59-20 AT CENTER OF 7 FROM E 1/4 TO S 1/4 COR OF SEC 7, 88-58-12 AT E 1/4 FROM SE COR TO CENTER OF SECTION 7, ANGLE 88-20-41 AT E 1/4 CORNER OF SEC 7 FROM CENTER OF SEC 8 TO SE CORNER OF SECTION 7.

1963 BATTERMAN PLAT V 22 PG 7 "CLOVERDALE" FOUND 1" PIPE.

FOUND 1 1/4X36" PIPE PINCHED AT BOTH ENDS. REPLACED WITH POLY. MON. AND PLACED CARSONITE POST 1' WEST OF MONUMENT. 1486.53 TO BENT PIN IN CENTER OF ROAD (REC 1486.31), 2663.17 (REC 2663.1) TO SE COR SEC 7, & ANGLE OF 88-59-17 (REC 88-58-12) AT E 1/4 COR SEC 7 FROM SE COR TO W 1/4 COR SEC 7.

C) Was the corner restored through acceptance of (1) an obliterated evidence location, or, (2) a found perpetuated location?
ACCEPTED FOUND MONUMENT.

D) Describe any material discrepancy between the location of the corner as restored or reestablished and the location of that corner as previously restored or reestablished by distance and direction. Show the discrepancy on the plan view drawing under (a), above. Show the distances between the corner as previously restored or reestablished and (1) the corner as restored or reestablished, and (2) to at least 4 of the witness monuments shown on the drawing in (a), above.

(E) Was the corner reestablished through lost corner proportionate methods? If so, show the method, including the directions and distances to other public land survey corners used as evidence or used for proportioning the corner location.
NO

I, Donald Barnes, hereby certify that the corner points as identified by the corner code index were, in a field survey on, MAY 22, 1995, established, re-established, monumented, re-monumented, recovered or restored as expressed below and in conformance with the regulations and rules as required in the current manual of survey instructions of the United States Department of Interior, Bureau of Land Management.

COUNTY SURVEYOR FILING DATA

Date of computer entry _____

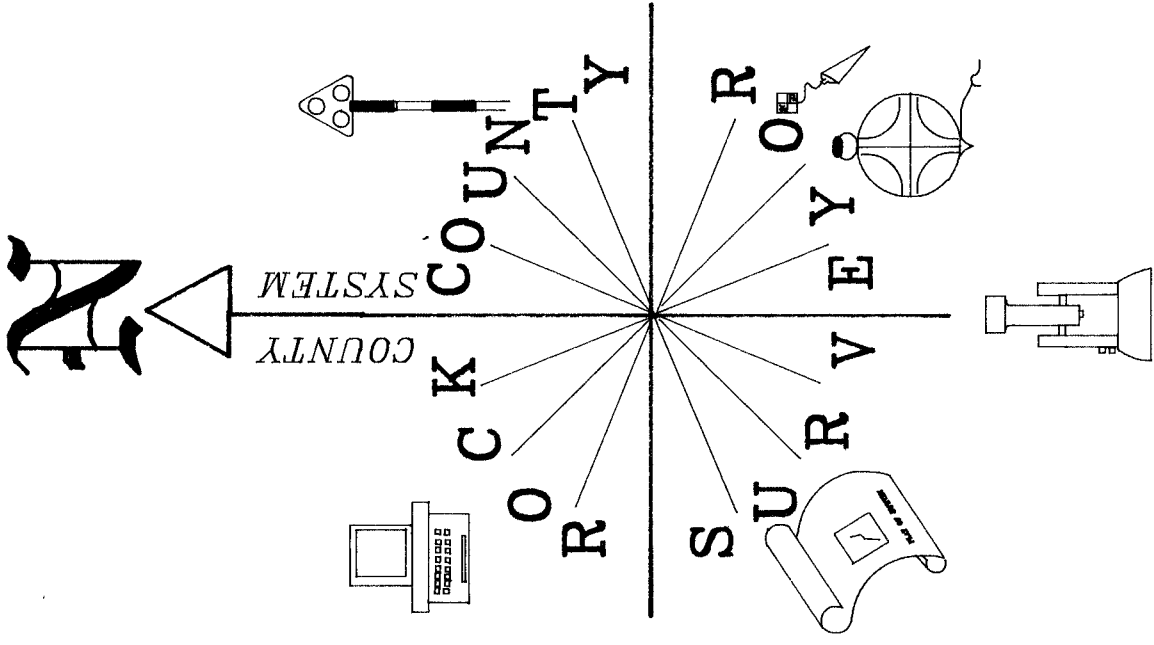
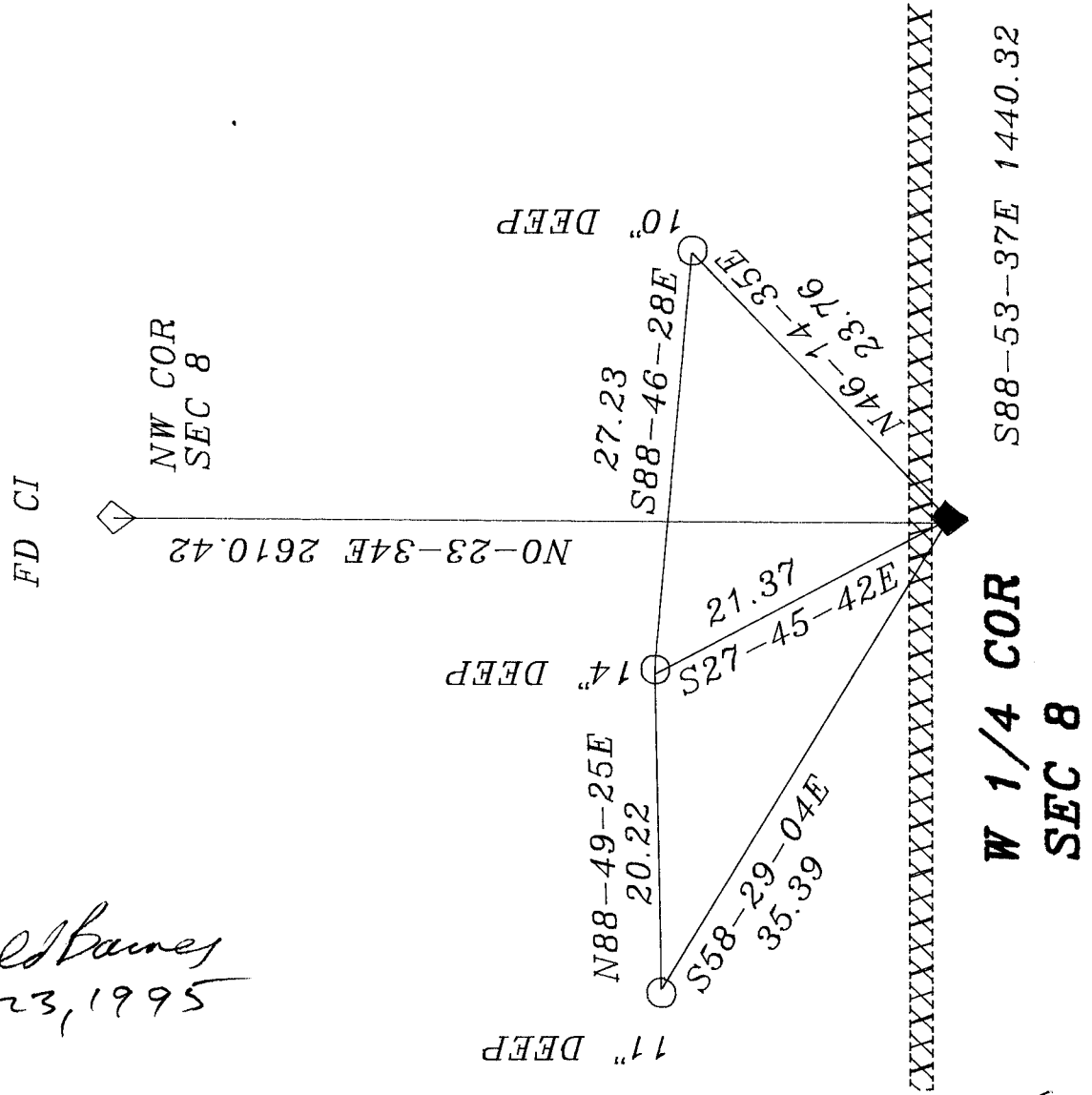
Date microfilmed _____

Number of included sheets 1
CORNER CODE

seal
Donald Barnes
May 23, 1995

AFFIX YOUR LAND SURVEYOR SEAL

Donald Barnes
5961327M
Mar 23, 1995



3/4X24 REROD WITH MAGNET
FOUND 1 1/4X36" PINCHED PIPE

REPLACED WITH POLY. MON.
PLACED CARSONITE POST ON WEST SIDE