

# PUBLIC LAND SURVEY MONUMENT RECORD

For Public Land Survey Corners in the

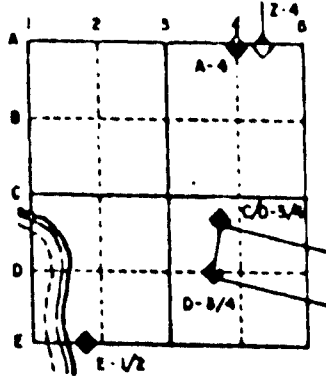
T. 1 N., R. 13 E.

## CORNER CODE INDEX

	1	2	3	4	5	6	7	8	9	10	11	12	13	14	15	16	17	18	19	20	21	22	23	24	25
A																									
B																									
C	6	5	4	3	2																				
D																									
E																									
F																									
G	7	8	9	10	11	12																			
H																									
I																									
J																									
K																									
L	13	14	15	16	17	18																			
M																									
N																									
O																									
P	19	20	21	22	23	24																			
Q																									
R																									
S																									
T	25	26	27	28	29	30																			
U																									
V																									
W																									
X																									
Y	31	32	33	34	35	36																			

PLACE MONUMENT SYMBOL (●) AT PROPER LOCATION ON ABOVE INDEX

### EXAMPLE



TURTLE TWP  
ROCK COUNTY WI

IF AVAILABLE  
STATE PLANE COORDINATES

North (Y) 223,208.25      Eleve. (Z) \_\_\_\_\_  
 East (X) 501,408.89      Zone \_\_\_\_\_  
 Hor. Datum COUNTY      Vert. Datum \_\_\_\_\_

◆ CORNER MONUMENT

○ WITNESS MONUMENT

BEARINGS ARE BASED ON:

TU543 SE 7

(B) Describe any record evidence, monument evidence, occupational evidence, testimonial evidence or any other material evidence you considered, and whether the monument was found or placed.

1929 BATTERMAN VOL 3 PG 176 FOUND GAS PIPE CALLS FOR 2663.1 TO E 1/4 & 2646.7 TO FENCE INTERSECTION AT S 1/4 CORNERS OF SECTION 7.

1929 BATTERMAN BK 16 PG 22 "GORNET'S SUB"- 2" PIPE. EASTERLY 254.43' TO A 1" PIPE WHICH IS 33.50 FROM A PIPE IN THE CENTER OF THE PAVEMENT. PIPE AT THE CENTER OF PAVEMENT IS ELEVATION 802.40. PLAT SHOWS A CONFLICT AT THE CORNER. CALLS FOR A PIPE 3.88' WEST & 0.35 NORTH OF THE 2" PIPE. ALSO SHOWS A PIPE 2.54 WEST OF A 2" PIPE AT THE SOUTH LINE OF THE SUBDIVISION.

1963 BATTERMAN BK 22 PG 7 "CLOVERDALE" FOUND EXISTING 1" PIPE. EASTERLY 247.09 IS A 1" PIPE WHICH IS 40.84 FROM THE CENTER OF THE PAVEMENT. 90-31-50 ANGLE AT THE SW FROM THE W 1/4 TO THE S 1/4 CORNER OF SECTION 8.

FOUND 2" PIPE LEANING. DROVE PIPE DEEP. PLACED 3/8"X24 REROD INSIDE PIPE. 15" DEEP WITH MAGNETS.

C) Was the corner restored through acceptance of (1) an obliterated evidence location, or, (2) a found perpetuated location?  
ACCEPTED FOUND PIPE.

D) Describe any material discrepancy between the location of the corner as restored or reestablished and the location of that corner as previously restored or reestablished by distance and direction. Show the discrepancy on the plan view drawing under (a), above. Show the distances between the corner as previously restored or reestablished and (1) the corner as restored or reestablished, and (2) to at least 4 of the witness monuments shown on the drawing in (a), above.

(E) Was the corner reestablished through lost corner proportionate methods? If so, show the method, including the directions and distances to other public land survey corners used as evidence or used for proportioning the corner location.  
NO

I, Donald Barnes, hereby certify that the corner points as identified by the corner code index were, in a field survey on, 1994, established, re-established, monumented, re-monumented, recovered or restored as expressed below and in conformance with the regulations and rules as required in the current manual of survey instructions of the United States Department of Interior, Bureau of Land Management.

seal

*7/13/95*  
*Donald Barnes*

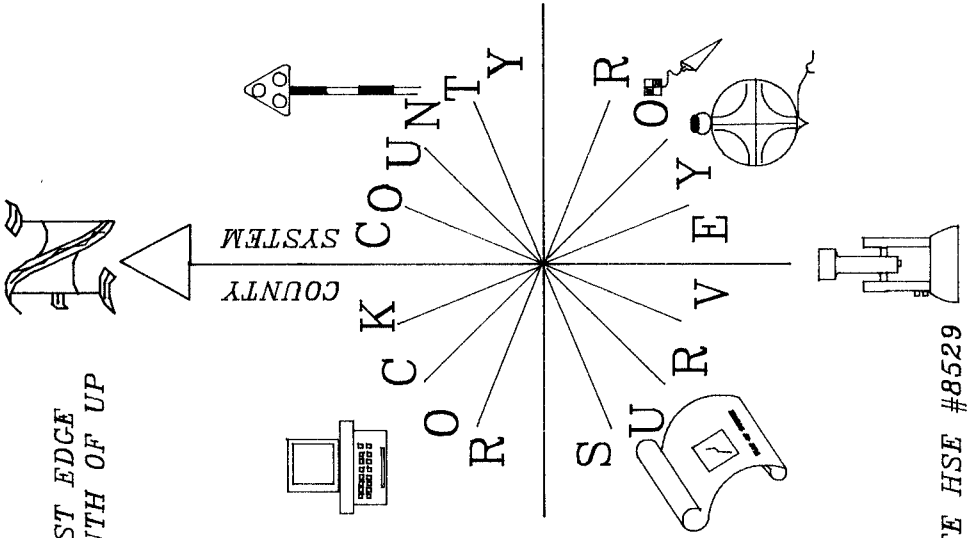
COUNTY SURVEYOR FILING DATA

Date of computer entry \_\_\_\_\_

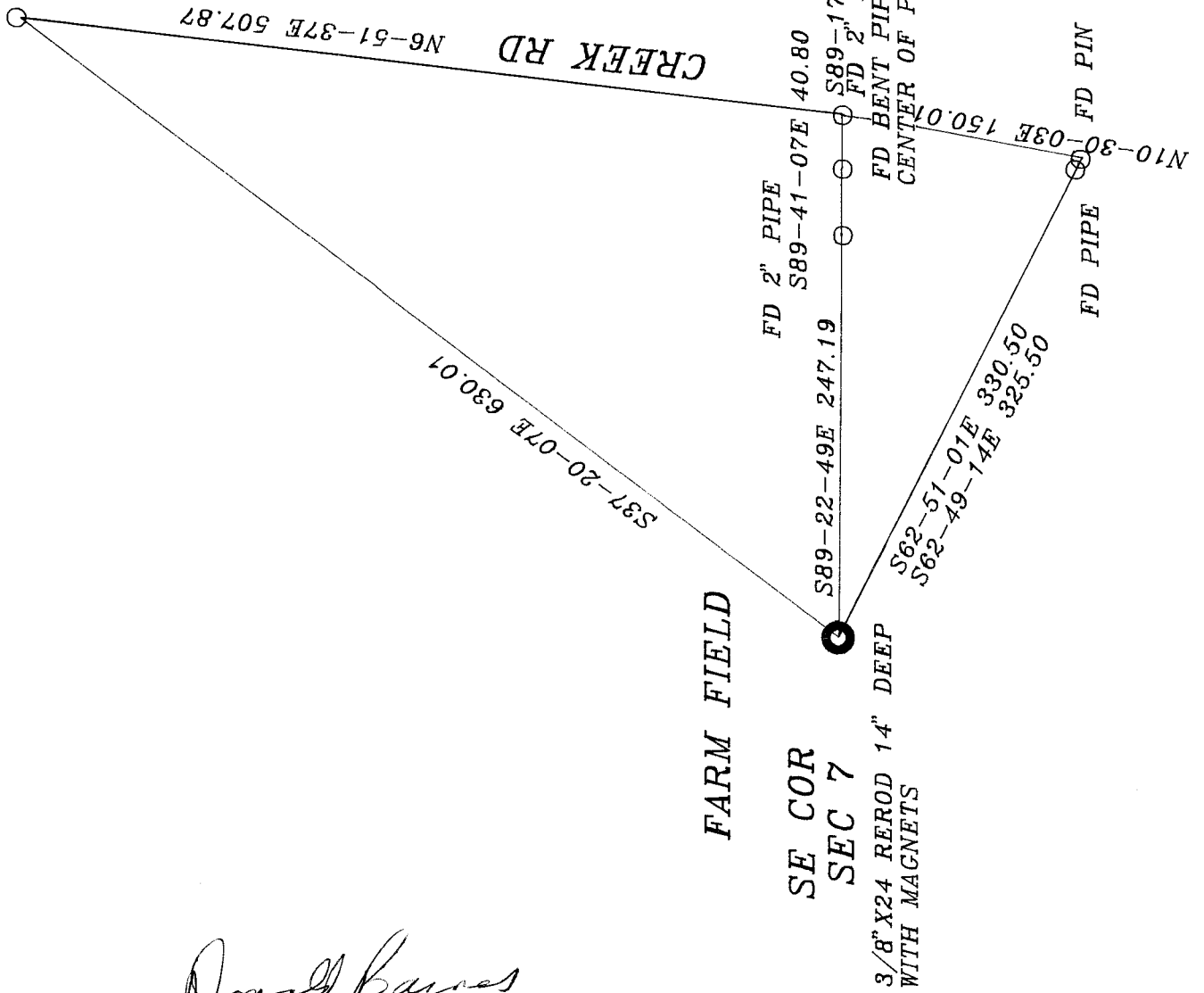
Date microfilmed \_\_\_\_\_

Number of included sheets \_\_\_\_\_  
CORNER CODE

AFFIX YOUR LAND SURVEYOR SEAL



3/4X24 REROD  
 10' WEST OF WEST EDGE  
 PVMT, +/-50 SOUTH OF UP



Donald Barnes  
 7/13/95