

PLAT AND RECORD

335

Of a Survey on Section 18 T 2 R 11 E. of the 4 P. M. in Plymouth Township

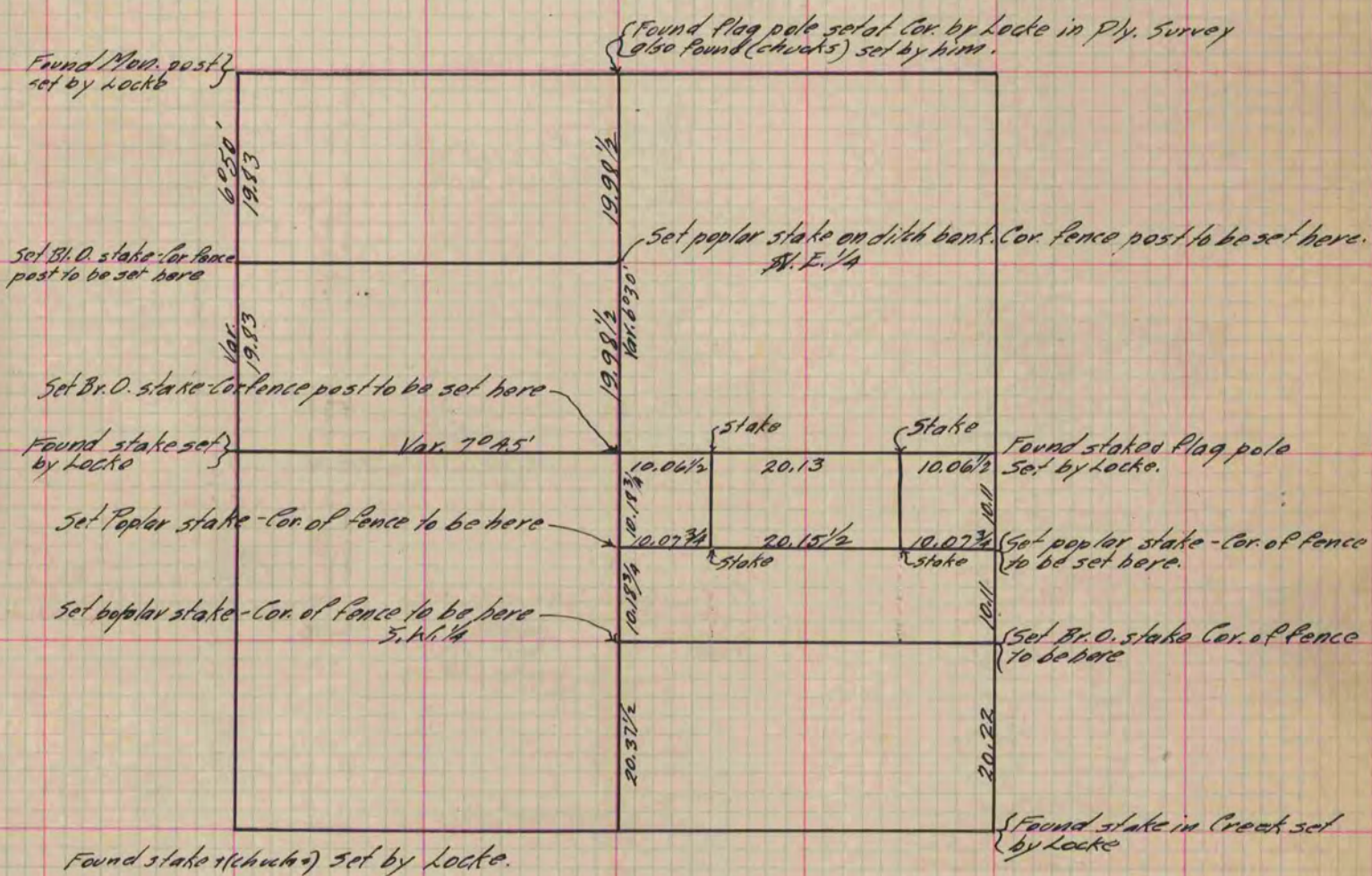
Rock County, Wisconsin, made November the 17, 18 & 19 1866

I hereby certify that the following is a correct record of said survey as made by me.

COUNTY BUILDING
IN CITY OF BELOIT

(Signed) R. K. Lee

Dep. County Surveyor.



Copied from P. 275 Vol. 1 County Surveyor's Record.