

U.S. PUBLIC LAND SURVEY MONUMENT RECORD

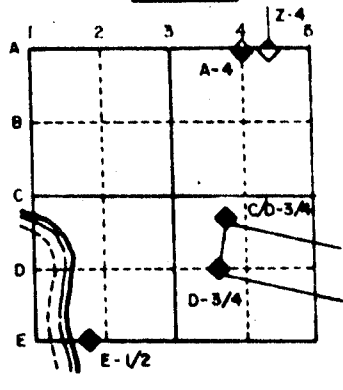
For Public Land Survey Corners in the
 T. 3 N., R. 12 E.

CORNER CODE INDEX

	2	3	4	5	6	7	8	9	10	11	12	13	14	15	16	17	18	19	20	21	22	23	24	25	
A																									
B																									
C																									
D																									
E																									
F																									
G																									
H																									
I																									
J																									
K																									
L																									
M																									
N																									
O																									
P																									
Q																									
R																									
S																									
T																									
U																									
V																									
W																									
X																									
Y																									
Z																									

PLACE MONUMENT SYMBOL (◆) AT PROPER LOCATION ON ABOVE INDEX

EXAMPLE



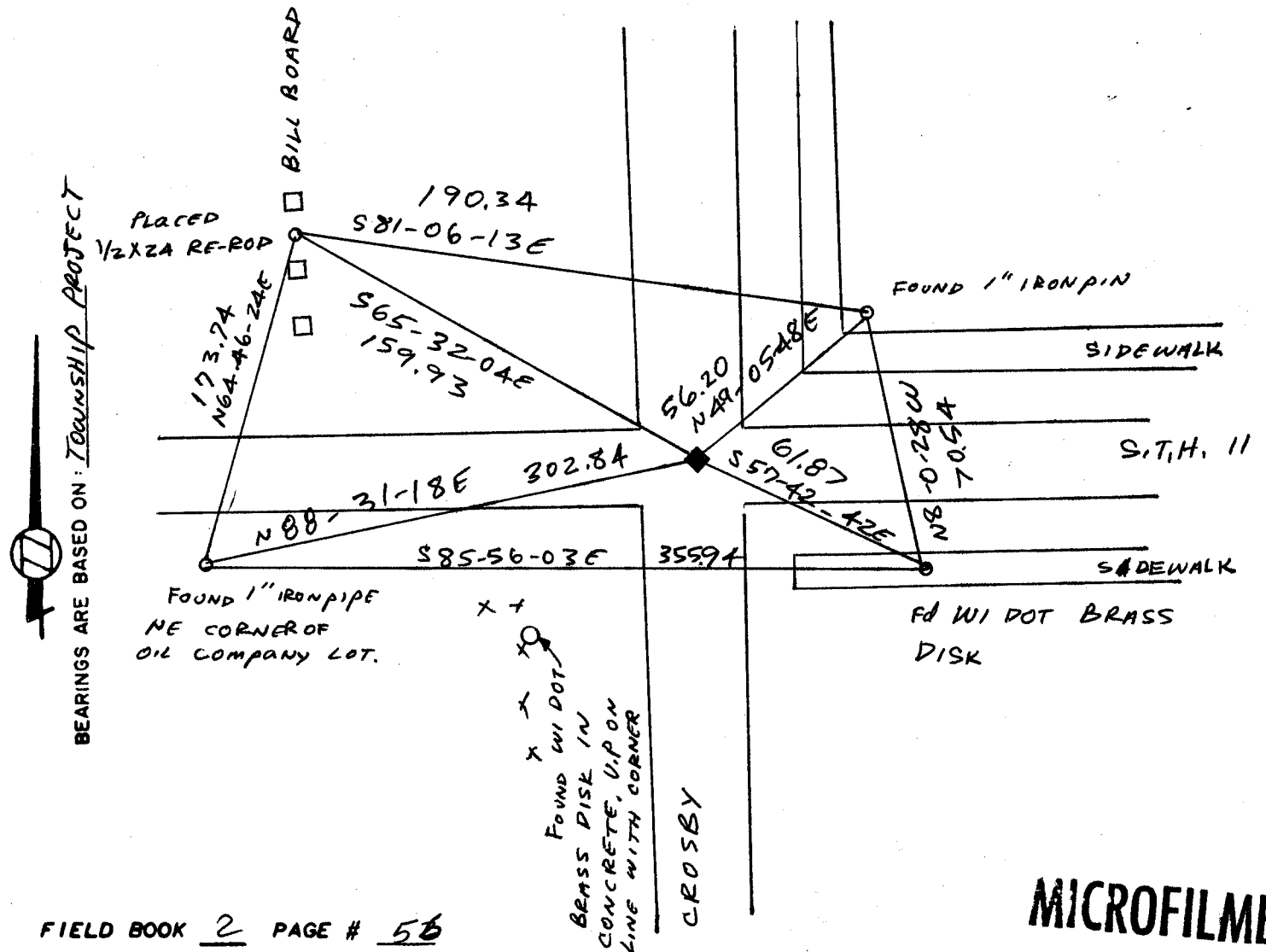
JANESVILLE TWP
 ROCK COUNTY WI

IF AVAILABLE
 STATE PLANE COORDINATES

North (Y) _____ Eleve. (Z) _____
 East (X) _____ Zone _____
 Hor. Datum _____ Vert. Datum _____

(a.) CORNER MONUMENT WITNESS MONUMENT

ALUMINUM
 MON



FIELD BOOK 2 PAGE # 56

MICROFILMED

SHOW A PLAN VIEW DRAWING DEPICTING THE CORNER MONUMENT AND SURROUNDING PHYSICAL FEATURES, INCLUDING THE EXCAVATION AREA AND DEPTH. THE CORNER MONUMENT SHALL HAVE THE FOLLOWING CHARACTERISTICS: 1) HAVE AT LEAST TWO PREDETERMINED BREAK-OFF POINTS. 2) IF BROKEN, LEAVE A PERMANENTLY MAGNETIZED REMNANT AT THE ORIGINAL POINT. 3) MUST BE EXTENDABLE. 4) THE CAP IS INSCRIBED: ROCK COUNTY SURVEY MONUMENT - PENALTY FOR DISTURBING MARKER. 5) OR AN EXISTING CUT LIMESTONE. AN IRON PIPE 1 1/2" x 4'0" (MINIMUM) MAY BE USED IN AREAS WHERE GROUND WATER IS WITHIN ONE FOOT OF THE SURFACE. IF THE CORNER IS OCCUPIED BY AN IMPROVEMENT (MANHOLE, BURIED CABLE, ETC.) ANY DURABLE, DISTINCT MONUMENT MAY BE USED. CORNERS SHALL BE REFERENCED WITH AT LEAST 4 DURABLE WITNESS MONUMENTS. WITNESS MONUMENTS SHALL BE MADE OF CONCRETE, NATURAL STONE, IRON OR OTHER EQUALLY DURABLE MATERIAL, EXCEPT WOOD. DESCRIBE THE CORNER AND THE WITNESS MONUMENTS.

CORNER CODE: X 17

(b.) Describe any record evidence, monument evidence, occupational evidence, testimonial evidence or any other material evidence you considered, and whether the monument was found or placed.

SEE ENCLOSED SHEET

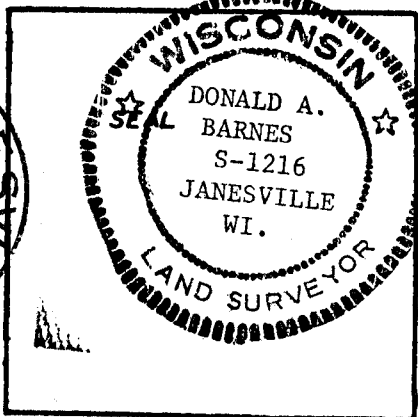
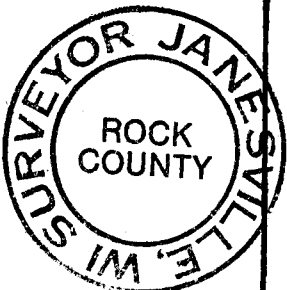
(c.) Was the corner restored through acceptance of (1) an obliterated evidence location, or, (2) a found perpetuated location?

ACCEPTED FOUND PERPETUATED LOCATION

(d.) Describe any material discrepancy between the location of the corner as restored or reestablished and the location of that corner as previously restored or reestablished by distance and direction. Show the discrepancy on the plan view drawing under (c), above. Show the distances between the corner as previously restored or reestablished and (1) the corner as restored or reestablished, and (2) to at least 4 of the witness monuments shown on the drawing in (a), above.

(e.) Was the corner reestablished through lost corner proportionate methods? If so, show the method, including the directions and distances to other public land survey corners used as evidence or used for proportioning in determining the corner location.

I, Donald Barnes, hereby certify that the corner points as identified by the corner code index were, in a field survey on SEP 1 1988, established, re-established, monumented, re-monumented, recovered or restored as expressed below and in conformance with the regulations and rules as required in the current manual of survey instructions of the United States Department of Interior, Bureau of Land Management.



COUNTY SURVEYOR FILING DATA

Date of Computer Entry _____

Date Received _____

Date Microfilmed _____

Treasurer's Receipt No. _____

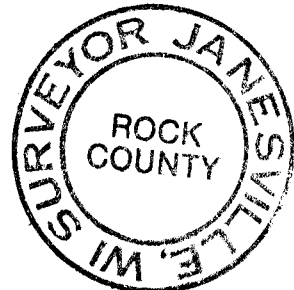
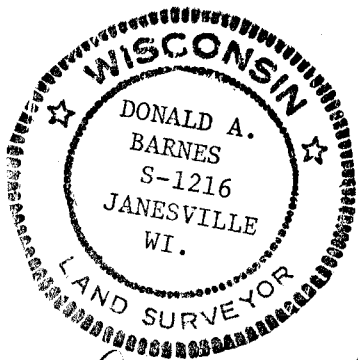
Number of Included Sheets 1

AFFIX YOUR LAND SURVEYOR SEAL. CORNER CODE X 17

(b) Describe any record evidence, monument evidence, occupational evidence, testimonial evidence or any other material evidence you considered, and whether the monument was found or placed.

- 1866 LOCKE VOL 1 PG 271 FOUND LIMESTONE ON CORNER-SET LIMESTONE 18 X 9 X 3 SURROUNDED BY 3 LIMESTONES.
- 1867 LOCKE VOL 1 PG 287 FOUND CORNER SET BY SELF SEE SEC 34.
- 1868 LOCKE VOL 1 PG 319 FOUND CORNER AS SET BY SELF.
- 1873 RUGER VOL 2 PG 108 LIMESTONE AT CORNER. SAID STONE IS 26 LINKS WEST OF FENCE ON E. SIDE OF ROAD & 50 LINKS SOUTH OF FENCE ON NORTH SIDE OF RD.
- 1881 LOCKE VOL 2 PG 331 FOUND LIMESTONE SET BY RUGER.
- 1882 RUGER VOL 2 PG 270 FOUND LIMESTONE SURROUNDED BY 4 HH THE CORNER IS 50 LINKS SOUTH OF FENCE ON N & 26 LINKS W OF FENCE ON E.
- 1882 RUGER VOL 2 PG 395 LIMESTONE 12 X 7 X 4 POINT UP.
- 1932 SUNNY VOL 3 PG 209 SHOWS TIES & 1 INCH SOUTH OF CENTER LINE OF CONCRETE.
- 1959 BATTERMAN JR. VOL 4 PG 31 SHOWS TIES
- 1981 BARNES VOL 6 PG 186 SHOWS STATE PLANE COORDINATES BY HURD.

FOUND ALUMINUM MONUMENT AND REFERENCED SAME.

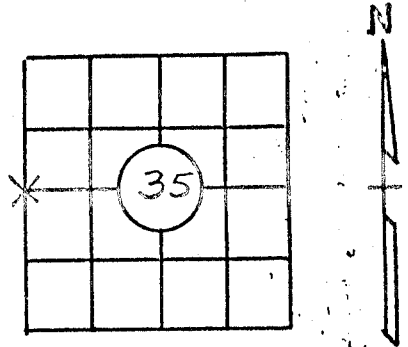


Donald Barnes
Sep 1 1988

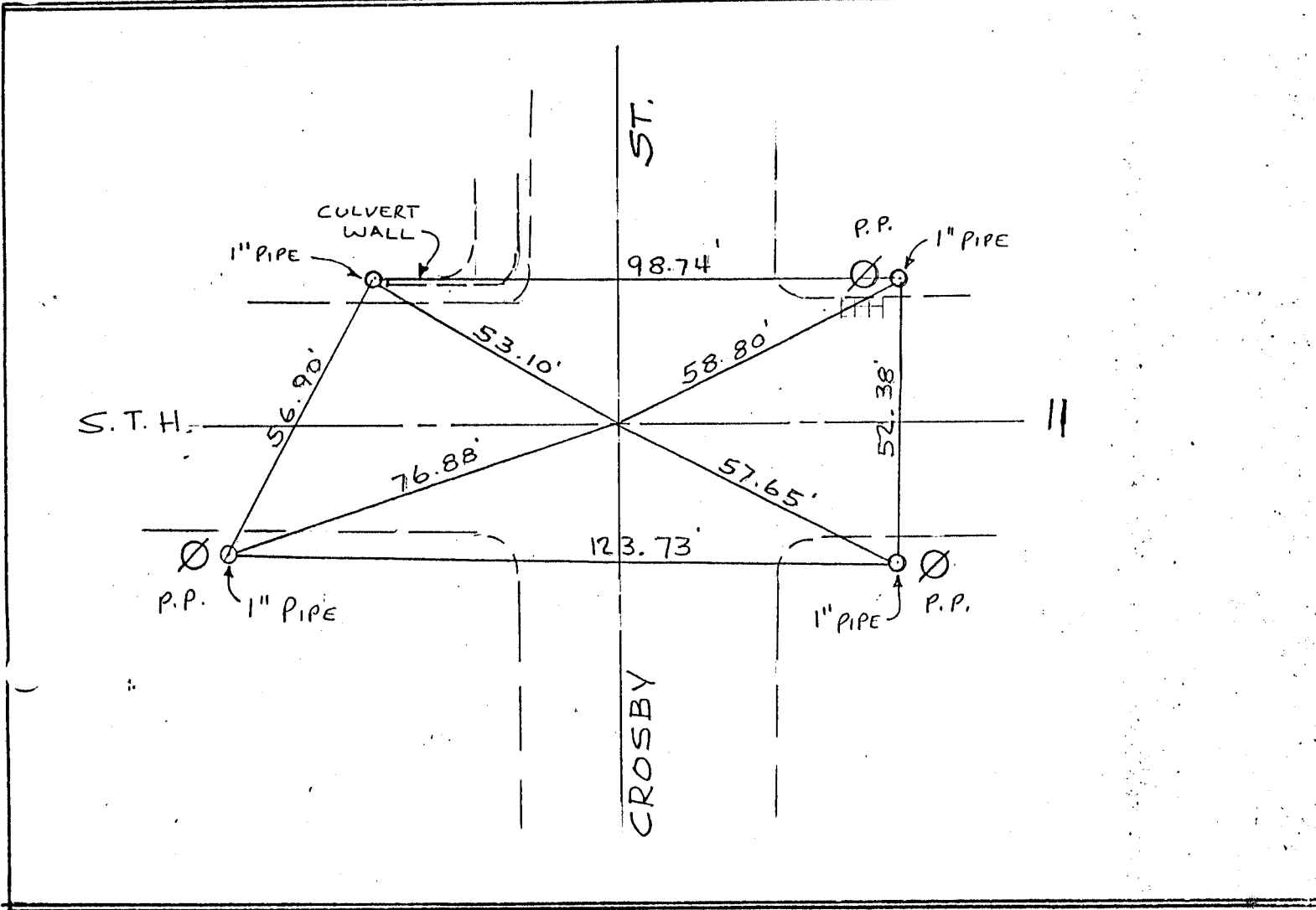
PRESERVATION OF LANDMARKS

BOOK _____ PAGE 1

SECTION 59,635(7) WISCONSIN STATUTES
 COUNTY Rock
 TOWN JANESVILLE
 HIGHWAY S.T.H. 11
 SECTION NO. 35
 T. 3 N., R. 12 E.
 TYPE OF LANDMARK P.K. NAIL
 LOCATION INDICATED ON SKETCH X



LOCATION SKETCH



Located and referenced by: R.F.B. 3-11, 1970
 Field notes recorded 3-11, 1970 in Book 152 on Page 23
 Copy sent to County Surveyor's Office _____, 19____
 Drawn by: _____

152

X17