

U.S. PUBLIC LAND SURVEY MONUMENT RECORD

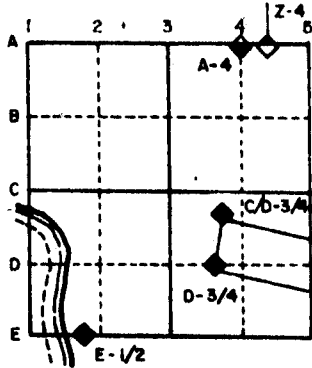
For Public Land Survey Corners in the

T. 3 N., R. 12 E.

CORNER CODE INDEX

	1	2	3	4	5	6	7	8	9	10	11	12	13	14	15	16	17	18	19	20	21	22	23	24	25
A																									
B																									
C	6																								
D		5																							
E			4																						
F				3																					
G					2																				
H																									
I																									
J	7																								
K		8																							
L			9																						
M				10																					
N					11																				
O						12																			
P							13																		
Q								14																	
R									15																
S										16															
T											17														
U												18													
V													19												
W														20											
X															21										
Y																22									
Z																	23								
																		24							
																			25						
																				26					
																					27				
																						28			
																							29		
																								30	
																									31
																									32
																									33
																									34
																									35
																									36

EXAMPLE



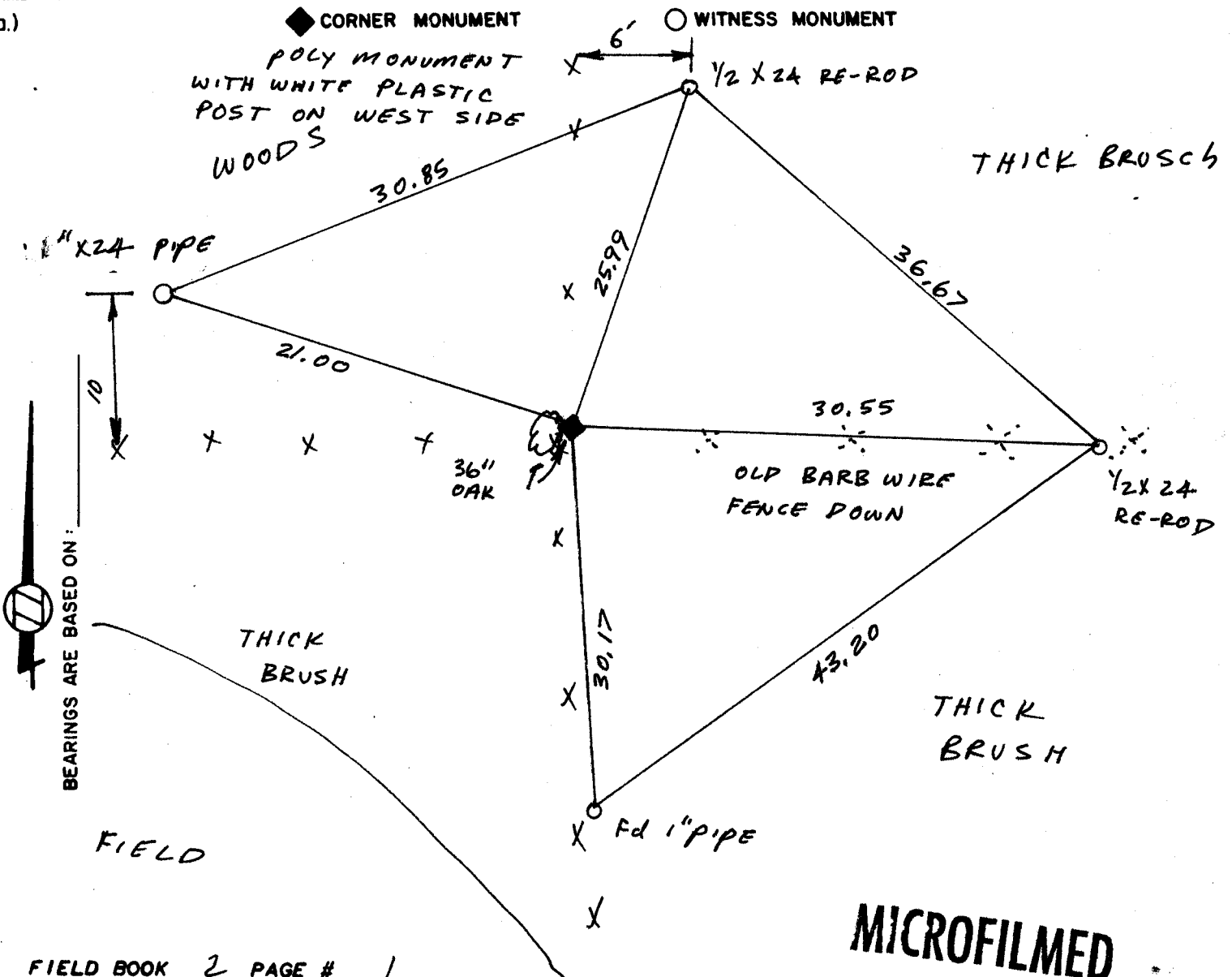
JANESVILLE TWP
ROCK COUNTY WI

IF AVAILABLE
STATE PLANE COORDINATES

North (Y) 259,607,31 Eleve. (Z) _____
 East (X) 2,254,717,29 Zone _____
 Hor. Datum 968,9 Vert. Datum _____

PLACE MONUMENT SYMBOL (◆) AT PROPER LOCATION ON ABOVE INDEX

(a.)



FIELD BOOK 2 PAGE # 1

MICROFILMED

SHOW A PLAN VIEW DRAWING DEPICTING THE CORNER MONUMENT AND SURROUNDING PHYSICAL FEATURES, INCLUDING THE EXCAVATION AREA AND DEPTH. THE CORNER MONUMENT SHALL HAVE THE FOLLOWING CHARACTERISTICS: 1) HAVE AT LEAST TWO PREDETERMINED BREAK-OFF POINTS. 2) IF BROKEN, LEAVE A PERMANENTLY MAGNETIZED REMNANT AT THE ORIGINAL POINT. 3) MUST BE EXTENDABLE. 4) THE CAP IS INSCRIBED: ROCK COUNTY SURVEY MONUMENT - PENALTY FOR DISTURBING MARKER. 5) OR AN EXISTING CUT LIMESTONE. AN IRON PIPE 1 1/2" x 4'0" (MINIMUM) MAY BE USED IN AREAS WHERE GROUND WATER IS WITHIN ONE FOOT OF THE SURFACE. IF THE CORNER IS OCCUPIED BY AN IMPROVEMENT (MANHOLE, BURIED CABLE, ETC.) ANY DURABLE, DISTINCT MONUMENT MAY BE USED. CORNERS SHALL BE REFERENCED WITH AT LEAST 4 DURABLE WITNESS MONUMENTS. WITNESS MONUMENTS SHALL BE MADE OF CONCRETE, NATURAL STONE, IRON OR OTHER EQUALLY DURABLE MATERIAL, EXCEPT WOOD. DESCRIBE THE CORNER AND THE WITNESS MONUMENTS.

CORNER CODE: P 17

- (b.) Describe any record evidence, monument evidence, occupational evidence, testimonial evidence or any other material evidence you considered, and whether the monument was found or placed.
- 1 1859 RUGER VOL 1 PG 98 NOTED SURROUNDED POST WITH 4 HH
 2. 1860 RUGER VOL 1 PG 124 USED THE CORNER BUT STATED NOTHING ABOUT IT
 - 3 1863 LOCKE VOL 1 PG 188 USED THE CORNER TO SUBDIVIDE SEC 23. STATED NOTHING ABOUT THE CORNER.
 4. 1875 RUGER VOL 2 PG 186, 187 NOTED A STAKE SURROUNDED BY 4 HH
 5. 1878 RUGER VOL 2 PG 238 USED THE CORNER TO SUBDIVIDE SEC 23. STATED NOTHING ABOUT CORNER.
 6. 1938 SUNNY VOL 3 PG 386 SHOWS FENCE INTERSECTION
 - 7 1960 BATTERMAN JR. PLAT OF SURVEY. FOUND 3 HH AROUND FENCE POST. SET 1" PIPE SURVEY ALSO SHOWS THAT THIS IS ON LINE WITH THE FOUND 2" PIPE AT THE CENTER OF SECTION 23 AND THE FOUND 4 HH AT THE 1/16th CORNER BETWEEN THE W 1/4 CORNER OF SECTION 23 AND THE CENTER OF SECTION 23.

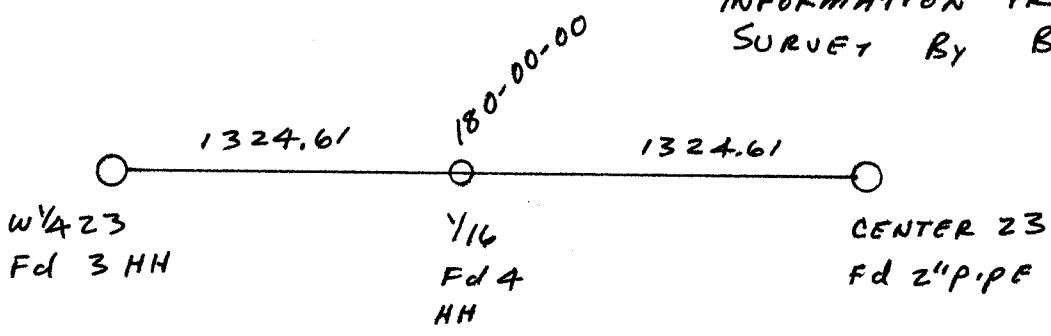
REPLACED 1" X 24 PIPE WITH POLY MONUMENT.

- (c.) Was the corner restored through acceptance of (1) an obliterated evidence location, or, (2) a found perpetuated location?
- ACCEPTED FOUND PERPETUATED LOCATION.

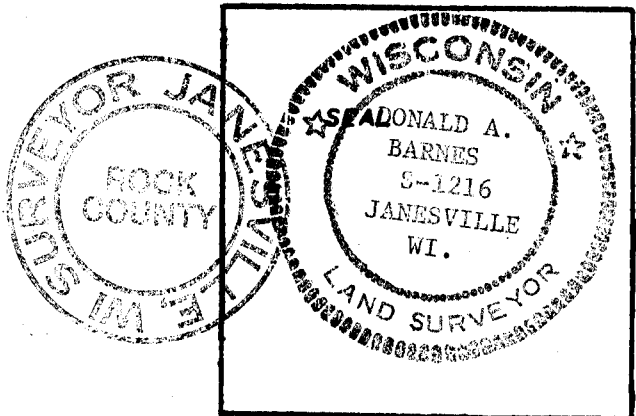
- (d.) Describe any material discrepancy between the location of the corner as restored or reestablished and the location of that corner as previously restored or reestablished by distance and direction. Show the discrepancy on the plan view drawing under (b), above. Show the distances between the corner as previously restored or reestablished and (1) the corner as restored or reestablished, and (2) to at least 4 of the witness monuments shown on the drawing in (a), above.

- (e.) Was the corner reestablished through lost corner proportionate methods? If so, show the method, including the directions and distances to other public land survey corners used as evidence or used for proportioning in determining the corner location.
- NO.

INFORMATION FROM PLAT OF SURVEY BY BATTERMAN JR.



I, Donald Barnes, hereby certify that the corner points as identified by the corner code index were, in a field survey on March 30, 1987, established, re-established, monumented, re-monumented, recovered or restored as expressed below and in conformance with the regulations and rules as required in the current manual of survey instructions of the United States Department of Interior, Bureau of Land Management.



COUNTY SURVEYOR FILING DATA
 Date of Computer Entry _____
 Date Received _____
 Date Microfilmed _____
 Treasurer's Receipt No. _____
 Number of Included Sheets _____

AFFIX YOUR LAND SURVEYOR SEAL. CORNER CODE P17