

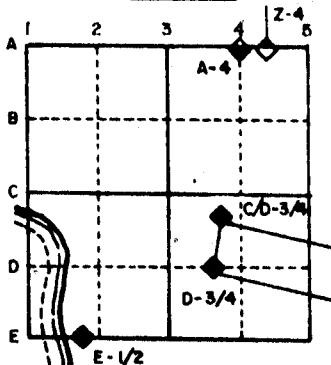
U.S. PUBLIC LAND SURVEY MONUMENT RECORD

For Public Land Survey Corners in the
T. 3 N., R. 12 E.

CORNER CODE INDEX

	1	2	3	4	5	6	7	8	9	10	11	12	13	14	15	16	17	18	19	20	21	22	23	24	25
A																									
B																									
C	6																								
D		5																							
E			4																						
F				3																					
G					2																				
H																									
I																									
J	7																								
K		8																							
L			9																						
M				10																					
N					11																				
O						12																			
P							13																		
Q								14																	
R									15																
S										16															
T											17														
U												18													
V													19												
W														20											
X															21										
Y																22									
Z																	23								
																		24							
																			25						
																				26					
																					27				
																						28			
																							29		
																								30	
																									31
																									32
																									33
																									34
																									35
																									36

EXAMPLE



JANESVILLE TWP
ROCK COUNTY WI

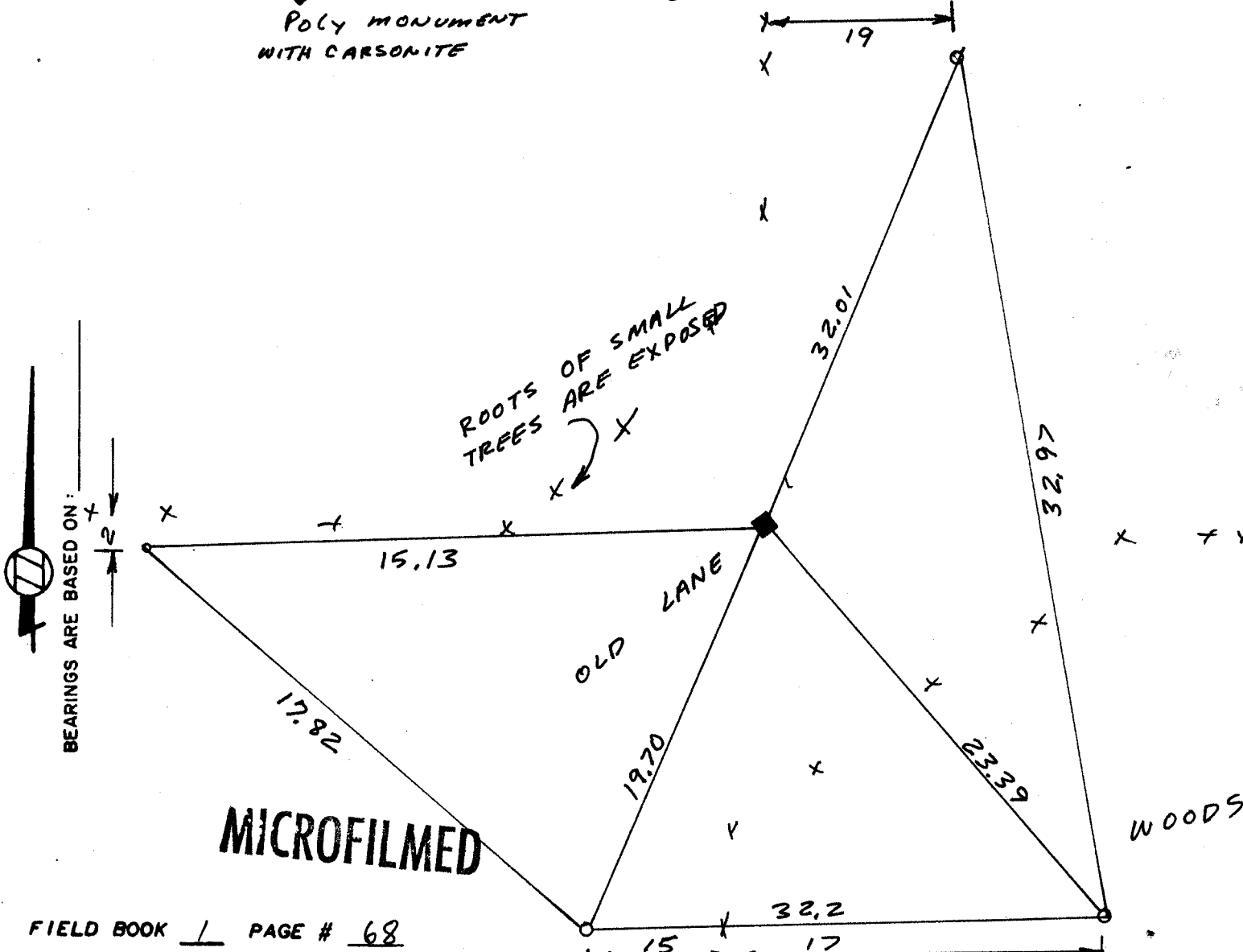
IF AVAILABLE STATE PLANE COORDINATES

North (Y) 270,208.98 Eleve. (Z) _____
 East (X) 3,254,510.96 Zone _____
 Hor. Datum 90 2.3 Vert. Datum _____

PLACE MONUMENT SYMBOL (◆) AT PROPER
LOCATION ON ABOVE INDEX

(a.) ◆ CORNER MONUMENT
 Poly monument
 WITH CARSONITE

○ WITNESS MONUMENT 1/2 X 24 RE-ROD



FIELD BOOK 1 PAGE # 68

SHOW A PLAN VIEW DRAWING DEPICTING THE CORNER MONUMENT AND SURROUNDING PHYSICAL FEATURES, INCLUDING THE EXCAVATION AREA AND DEPTH. THE CORNER MONUMENT SHALL HAVE THE FOLLOWING CHARACTERISTICS: 1) HAVE AT LEAST TWO PREDETERMINED BREAK-OFF POINTS. 2) IF BROKEN, LEAVE A PERMANENTLY MAGNETIZED REMNANT AT THE ORIGINAL POINT. 3) MUST BE EXTENDABLE. 4) THE CAP IS INSCRIBED: ROCK COUNTY SURVEY MONUMENT - PENALTY FOR DISTURBING MARKER. 5) OR AN EXISTING CUT LIMESTONE. AN IRON PIPE 1 1/2" X 4" (MINIMUM) MAY BE USED IN AREAS WHERE GROUND WATER IS WITHIN ONE FOOT OF THE SURFACE. IF THE CORNER IS OCCUPIED BY AN IMPROVEMENT (MANHOLE, BURIED CABLE, ETC.) ANY DURABLE, DISTINCT MONUMENT MAY BE USED. CORNERS SHALL BE REFERENCED WITH AT LEAST 4 DURABLE WITNESS MONUMENTS. WITNESS MONUMENTS SHALL BE MADE OF CONCRETE, NATURAL STONE, IRON OR OTHER EQUALLY DURABLE MATERIAL, EXCEPT WOOD. DESCRIBE THE CORNER AND THE WITNESS MONUMENTS.

CORNER CODE:
G 17

Combs PLAT OF SURVEY HEIGHTS
981 JUNIPER
shows COR POS NOT IDENTIFIED

- (b.) Describe any record evidence, monument evidence, occupational evidence, testimonial evidence or any other material evidence you considered, and whether the monument was found or placed.
- 1 1870 RUGER VOL 2 PG 18 FOUND OLD STAKE- ALSO FOUND NORTH BEARING TREE & STUMP OF SOUTH BEARING TREE.
 - 2 1873 RUGER VOL 2 PG 19 USED THE CORNER TO SUBDIVIDE SECTION 11
 3. 1872 RUGER VOL 2 PG 84 LEE FOUND OLD STAKE & STUMP OF BT. SET W.O. STAKE 2' HIGH. USED THE CORNER TO SUBDIVIDE SECTION 11
 4. 1887 RUGER VOL 2 PG 417 FOUND OLD STAKE & SMALL HH ALSO STUMP OF SE BT. DROVE NEW STAKE IN PLACE OF OLD STAKE & SURROUNDED IT WITH 4 HH TOKE NEW BT 14W0 8 S50 1/2 E BL 0 7 N26W35
 - 5 1902 KERCH VOL 3 PG 16 FOUND STONE SET BY RUGER
 - 6 1958 BATTERMAN JR. VOL 3 PG 534 NOTES A 1" PIPE BUT DOES NOT STATE ANYTHING ABOUT IT

1981 COMBS (PLAT OF SURVEY) STATES HE FOUND A PIPE.
FOUND 1 1/2" X 24" PIPE. ALSO DUG 1.5 DEEP, 3' TO THE NORTH, 1.5' TO THE SOUTH, EAST AND WEST AND DID NOT FIND RUGER'S STONE. AREA APPEARS TO BE WASHED OUT OR WORN DOWN FROM TRAVEL. REPLACED PIPE WITH POLY MONUMENT AND PLACED YELLOW CARSONITE POST ON NORTH SIDE OF MONUMENT

(c.) Was the corner restored through acceptance of (1) an obliterated evidence location, or, (2) a found perpetuated location?

ACCEPTED FOUND PERPETUATED LOCATION

(d.) Describe any material discrepancy between the location of the corner as restored or reestablished and the location of that corner as previously restored or reestablished by distance and direction. Show the discrepancy on the plan view drawing under (d), above. Show the distances between the corner as previously restored or reestablished and (1) the corner as restored or reestablished, and (2) to at least 4 of the witness monuments shown on the drawing in (e), above.

(e.) Was the corner reestablished through lost corner proportionate methods? If so, show the method, including the directions and distances to other public land survey corners used as evidence or used for proportioning in determining the corner location.

I, Donald Barnes, hereby certify that the corner points as identified by the corner code index were, in a field survey on March 12 1987, established, re-established, monumented, re-monumented, recovered or restored as expressed below and in conformance with the regulations and rules as required in the current manual of survey instructions of the United States Department of Interior, Bureau of Land Management.



COUNTY SURVEYOR FILING DATA
 Date of Computer Entry _____
 Date Received _____
 Date Microfilmed _____
 Treasurer's Receipt No. _____
 Number of Included Sheets _____

AFFIX YOUR LAND SURVEYOR SEAL. CORNER CODE G17