

U.S. PUBLIC LAND SURVEY MONUMENT RECORD

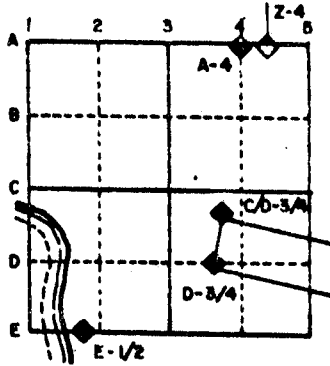
For Public Land Survey Corners in the
T. 3 N., R. 12 E.

CORNER CODE INDEX

	1	2	3	4	5	6	7	8	9	10	11	12	13	14	15	16	17	18	19	20	21	22	23	24	25
A																									
B																									
C	6																								
D		5																							
E			4																						
F				3																					
G					2																				
H																									
I																									
J																									
K																									
L	7																								
M		8																							
N			9																						
O				10																					
P					11																				
Q						12																			
R							13																		
S								14																	
T									15																
U										16															
V											17														
W												18													
X													19												
Y														20											
Z															21										
																22									
																	23								
																		24							
																			25						
																				26					
																					27				
																						28			
																							29		
																								30	
																									31
																									32
																									33
																									34
																									35
																									36

PLACE MONUMENT SYMBOL (◆) AT PROPER LOCATION ON ABOVE INDEX

EXAMPLE



JANESVILLE TWP
ROCK COUNTY WI

IF AVAILABLE STATE PLANE COORDINATES

North (Y) 251,655.32 Eleve. (Z) _____
 East (X) 2,254,942.07 Zone _____
 Hor. Datum _____ Vert. Datum _____

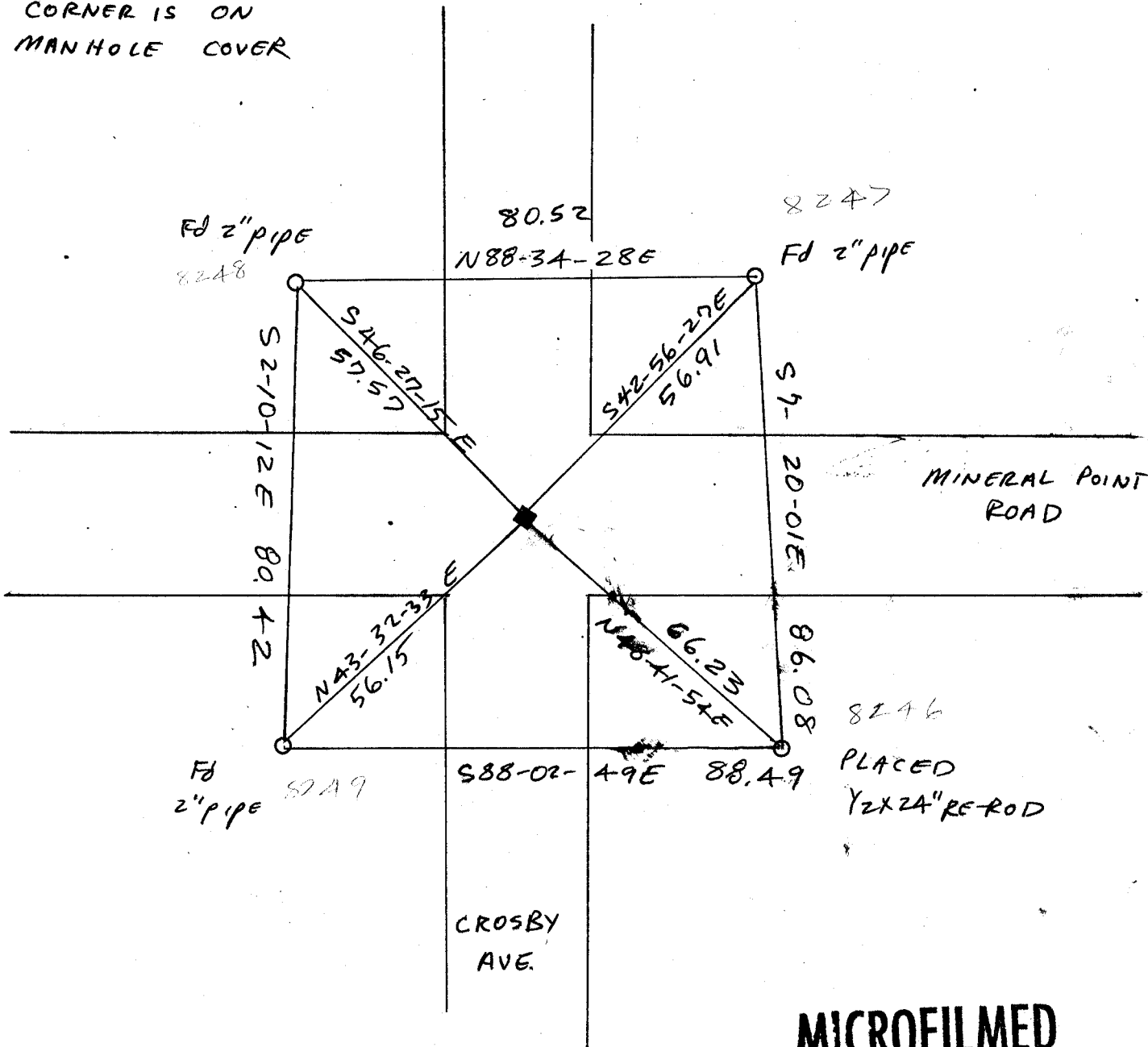
a.)

◆ CORNER MONUMENT

○ WITNESS MONUMENT

CORNER IS ON
MANHOLE COVER

BEARINGS ARE BASED ON:



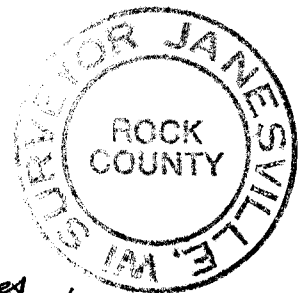
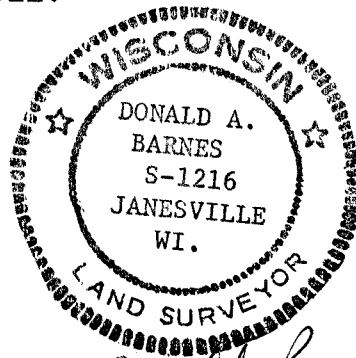
MICROFILMED

SHEET 1 OF 3

CORNER CODE: V17

(b) Describe any record evidence, monument evidence, occupational evidence, testimonial evidence or any other material evidence you considered, and whether the monument was found or placed.

- 1866 LOCKE VOL 1 PG 271 USED CORNER TO ESTABLISH THE NORTH QUARTER CORNER OF SECTION 34. DID NOT STATE ANYTHING ABOUT THE CORNER.
- 1868 LOCKE VOL 1 PG 319 FOUND OLD STAKE IN CENTER OF HIGHWAY (E&W) AND ONE ROD FROM E. SIDE OF N & S HIGHWAY.
- 1872 R.K. LEE VOL 2 PG 83 FOUND OLD STAKE IN CENTER OF E & W ROAD AND 25 LINKS W. OF LINE OF N & S FENCE.
- 1877 RUGER VOL 2 PG 225 FOUND OLD STAKE & LIMESTONE ON SOUTH OF IT. SET IN PLACE OF STAKE LIMESTONE 19 x 11 x 4 1/2" & SURROUNDED BY 4 H.H.
- 1877 RUGER VOL 2 PG 83 CORNER AS SET BY SELF . SEE SECTION 26 ON PAGE 179 OF THIS BOOK.
- 1881 R.K. LEE VOL 2 PG 331 FOUND LIMESTONE SET BY RUGER.
- 1882 RUGER VOL 2 PG 395 FOUND LIMESTONE SURROUNDED BY 4 HH.
- 1882 RUGER VOL 2 PG 270 FOUND LIMESTONE SURROUNDED BY 4 HH STONES. IT IS IN CENTER OF E & W ROAD & IN LINE WITH FENCE RUNNING NORTH.
- 1932 SUNNY VOL 3 PG 209 FOUND 4" X 10" LIMESTONE. SET 1" PIPE WITH TIES.
- 1962 KNOERR "FRANKLIN HEIGHT" BOOK 21 PAGE 28. STATES NOTHING ABOUT CORNER AND LEGEND SHOWS NOTHING.
- 1967 SMITH "COUNTRY CLUB ESTATES" BOOK 23 PG 33 LEGEND SHOWS A PIPE. SHOWS A DISTANCE OF 45.84 ALONG THE SECTION LINE TO THE INTERSECTION OF THE SECTION LINE AND THE EAST LINE OF THE LOT PROJECTED SOUTH. MY MEASURED DISTANCE TO THIS COMPUTED LOCATION IS 45.49.
- 1970 KAKUSKE "KIMARY VALLEY" SHOWS CORNER BUT STATES NOTHING ABOUT IT.
- 1971 BEATTY "HARVARD COURT" BOOK 25 PG 23 LEGEND SHOWS PIPE BUT STATES NOTHING ON THE MAP.
- 1974 KNOERR "HAMILTON HEIGHTS" BOOK 27 PAGE 13. STATES CORNER IS OCCUPIED BY MANHOLE. SHOWS A DISTANCE OF 345.02 ALONG SECTION LINE TO THE INTERSECTION OF THAT LINE WITH THE EAST LINE OF A LOT PROJECTED SOUTH.
- 1977 COMBS "ARNPRIOR ESTATES SECOND ADDITION" BOOK 28 PG 33. STATE SW CORNER IS OCCUPIED BY MANHOLE.
- 1984 COMBS "HAMILTON HEIGHTS" BOOK 27 PAGE 13 STATES THAT THE CORNER IS OCCUPIED BY MANHOLE.



Donald Barnes
Sheet 2 of 3 7/15/88

This location is in harmony with most of the following found monuments:

1) Is on a straight line with the SW and S 1/4 corners of section 27. Locke declared the South quarter corner as lost and placed it on line with the SW and SE corners of section 27.

2) The first monument on the South side of Bond Place Drive is 39.94 West of the section line and the record distance is 40.01. The distance to a point on the section line that is computed using that subdivision's record angle is 1328.69. The record distance is 1328.72'. The distance from this point to the East quarter corner of section 34 is 1293.89'. The record distance is 1293.89.

3) At a distance of 33.00 from the NE corner of section 34 and along the line between the NE corner of section 34 and the East quarter corner of section, the distance to the found pipe to the West is 33.00. The record distance is 33.00.

4) The angle between the West quarter corner, the Southwest corner, and the South quarter corners of section 26 is 90-20-28. The record angle is 90-20.

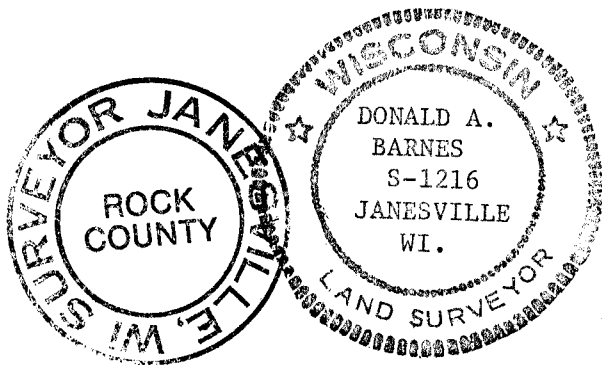
5) The found pipe that is 325.30 North of the Southwest corner of section 26 is on line between the Southwest corner and the West quarter corner of section 26. This is the way the subdivision shows it. The record distance is 325.00.

6) The pipes found in the subdivisions in the Northeast quarter of section 34 are within .05 of the record North/South distances. The distances from the section line to the pipes found in the subdivisions to the North are as follows: The pipe at the Southwest corner of lot 7 is 40.34 and the record distance is 40.00. The distance to the pipe found that was found just NW of the section corner is 40.65 and the record distance is 40.29.

7) The distances of the found pipes that are in the Southwest quarter of section 34 are longer than the record distances.

(c) Was the corner restored through acceptance of (1) an obliterated evidence location. or, (2) a found perpetuated location?

The corner was restored through acceptance of obliterated evidence location.



Donald Barnes
7/15/88

Sheet 3 of 3

U17