

# U.S. PUBLIC LAND SURVEY MONUMENT RECORD

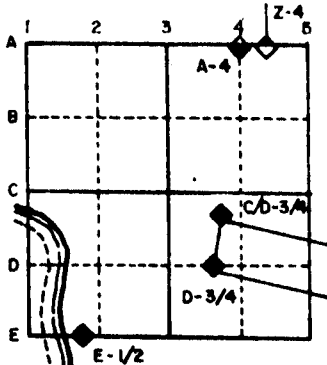
For Public Land Survey Corners in the

T. 3 N., R. 12 E.

## CORNER CODE INDEX

	1	2	3	4	5	6	7	8	9	10	11	12	13	14	15	16	17	18	19	20	21	22	23	24	25
A																									
B	6																								
C		5																							
D			4																						
E				3																					
F					2																				
G																									
H	7																								
J		8																							
K			9																						
L				10																					
M					11																				
N						12																			
O							13																		
P								14																	
Q									15																
R										16															
S											17														
T												18													
U													19												
V														20											
W															21										
X																22									
Y																	23								
Z																		24							
																			25						
																				26					
																					27				
																						28			
																							29		
																								30	
																									31
																									32
																									33
																									34
																									35
																									36

### EXAMPLE



JANESVILLE TWP  
ROCK COUNTY WI

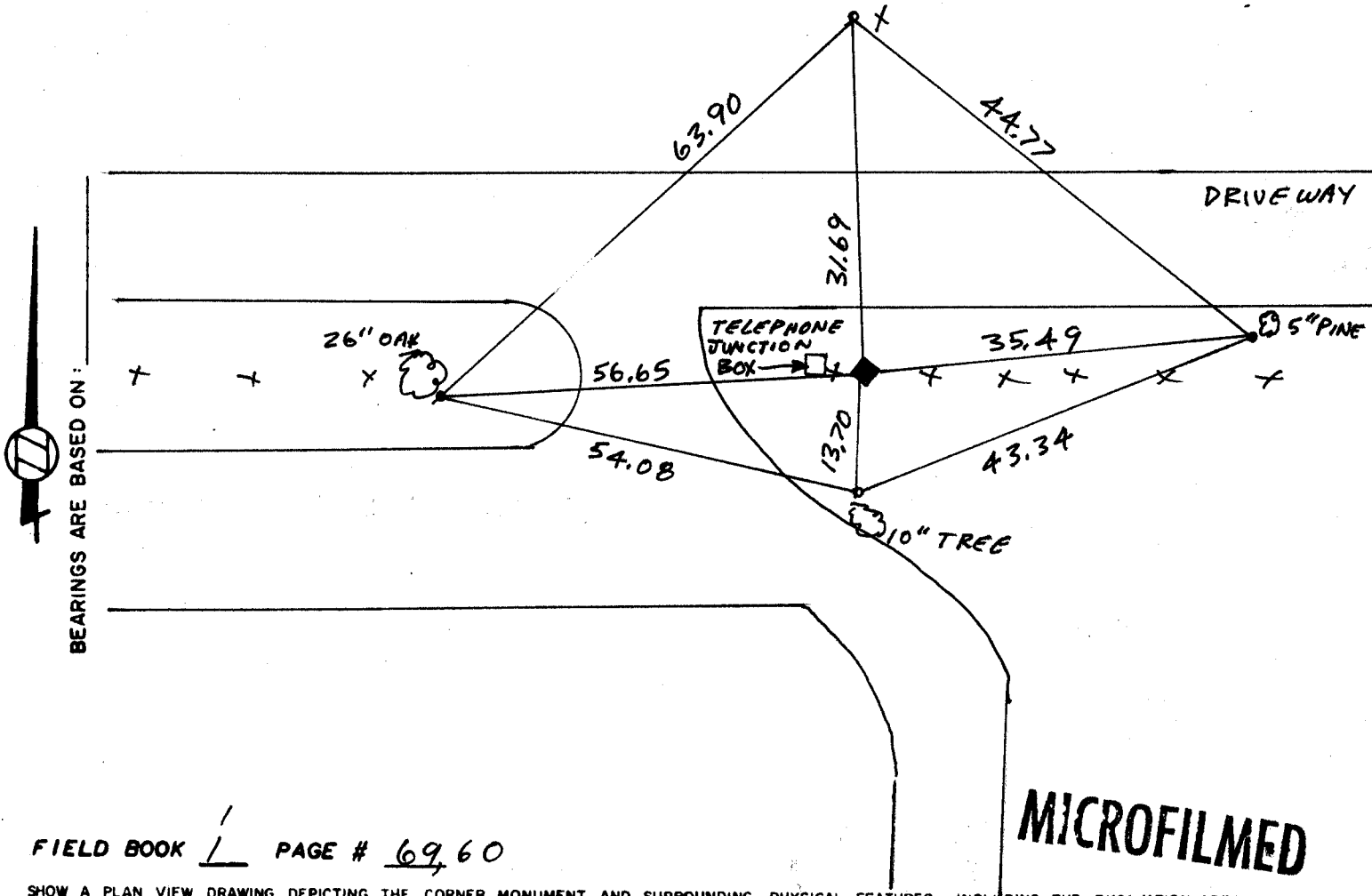
564

IF AVAILABLE  
STATE PLANE COORDINATES

North (Y) 262,182.90      Eleve. (Z) \_\_\_\_\_  
 East (X) 2,241,433.18      Zone \_\_\_\_\_  
 Hor. Datum 932      Vert. Datum \_\_\_\_\_

PLACE MONUMENT SYMBOL (◆) AT PROPER LOCATION ON ABOVE INDEX

- (a) ◆ CORNER MONUMENT      ○ WITNESS MONUMENT 1/2 X 24 RE ROD
- Poly monument  
with CARSONITE  
ON EAST SIDE



FIELD BOOK 1 PAGE # 69,60

**MICROFILMED**

SHOW A PLAN VIEW DRAWING DEPICTING THE CORNER MONUMENT AND SURROUNDING PHYSICAL FEATURES, INCLUDING THE EXCAVATION AREA AND DEPTH. THE CORNER MONUMENT SHALL HAVE THE FOLLOWING CHARACTERISTICS: 1) HAVE AT LEAST TWO PREDETERMINED BREAK-OFF POINTS. 2) IF BROKEN, LEAVE A PERMANENTLY MAGNETIZED REMNANT AT THE ORIGINAL POINT. 3) MUST BE EXTENDABLE. 4) THE CAP IS INSCRIBED: ROCK COUNTY SURVEY MONUMENT - PENALTY FOR DISTURBING MARKER. 5) OR AN EXISTING CUT LIMESTONE. AN IRON PIPE 1 1/2" X 4'0" (MINIMUM) MAY BE USED IN AREAS WHERE GROUND WATER IS WITHIN ONE FOOT OF THE SURFACE. IF THE CORNER IS OCCUPIED BY AN IMPROVEMENT (MANHOLE, BURIED CABLE, ETC.) ANY DURABLE, DISTINCT MONUMENT MAY BE USED. CORNERS SHALL BE REFERENCED WITH AT LEAST 4 DURABLE WITNESS MONUMENTS. WITNESS MONUMENTS SHALL BE MADE OF CONCRETE, NATURAL STONE, IRON OR OTHER EQUALLY DURABLE MATERIAL, EXCEPT WOOD. DESCRIBE THE CORNER AND THE WITNESS MONUMENTS.

CORNER CODE: N 7

(b.) Describe any record evidence, monument evidence, occupational evidence, testimonial evidence or any other material evidence you considered, and whether the monument was found or placed.

1868 LOCKE VOL 1 PG 308 FOUND BEARING TREES & STAKE IN CORNER OF FENCE

1981 BARNES VOL 6 PG 133 SHOWS THAT SHIMEAL, COMBS, THOM USED THE CORNER

FOUND 1 7/8"X54" IRON REROD. WITH LARGE HH ON SOUTH SIDE. REPLACED REROD WITH POLY MONUMENT & PLACED CARSONITE POST ON EAST SIDE. THE CORNER IS ON LINE WITH THE N/S FENCE THAT IS ON THE WEST SIDE OF THE ROAD TO THE SOUTH.

1972 H.L. Coe plat of survey shows stals nothing

(Sec 20) Shimeal 1972 P 195

Thom fd pin 1970

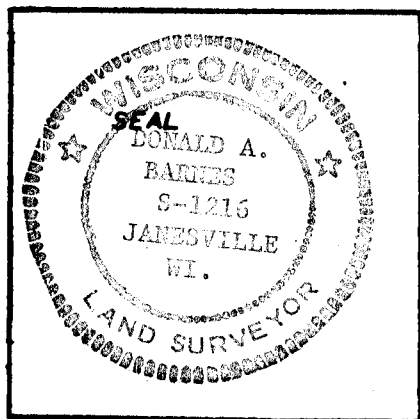
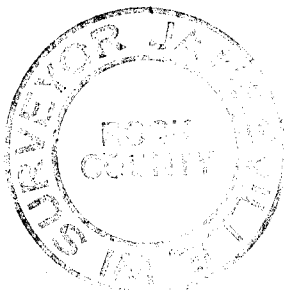
(c.) Was the corner restored through acceptance of (1) an obliterated evidence location, or, (2) a found perpetuated location?

ACCEPTED FOUND PERPETUATED LOCATION

(d.) Describe any material discrepancy between the location of the corner as restored or reestablished and the location of that corner as previously restored or reestablished by distance and direction. Show the discrepancy on the plan view drawing under (a), above. Show the distances between the corner as previously restored or reestablished and (1) the corner as restored or reestablished, and (2) to at least 4 of the witness monuments shown on the drawing in (a), above.

(e.) Was the corner reestablished through lost corner proportionate methods? If so, show the method, including the directions and distances to other public land survey corners used as evidence or used for proportioning in determining the corner location.

I, Donald Barnes, hereby certify that the corner points as identified by the corner code index were, in a field survey on March 12 1987 established, re-established, monumented, re-monumented, recovered or restored as expressed below and in conformance with the regulations and rules as required in the current manual of survey instructions of the United States Department of Interior, Bureau of Land Management.



COUNTY SURVEYOR FILING DATA

Date of Computer Entry \_\_\_\_\_

Date Received \_\_\_\_\_

Date Microfilmed \_\_\_\_\_

Treasurer's Receipt No. \_\_\_\_\_

Number of Included Sheets \_\_\_\_\_

AFFIX YOUR LAND SURVEYOR SEAL. CORNER CODE N7