

U.S. PUBLIC LAND SURVEY MONUMENT RECORD

For Public Land Survey Corners in:

WI ADMINISTRATIVE CODE A-E 7.08 REQUIREMENT

T. 1 N., R. 11 E

CORNER CODE INDEX

A	1	2	3	4	5	6	7	8	9	10	11	12	13	14	15	16	17	18	19	20	21	22	23	24	25
B																									
C	6																								
D																									
E																									
F																									
G	7																								
H																									
J																									
K																									
L	18																								
M																									
N																									
O																									
P	19																								
Q																									
R																									
S																									
T	30																								
U																									
V																									
W																									
X	31																								
Y																									
Z																									

NEWARK TWP

ROCK COUNTY WI

IF AVAILABLE
ROCK COUNTY COORDINATES PREFERRED

North _____ Elev. _____

East _____

Hor. Datum _____ Vert. Datum _____

LATITUDE _____ ELLIPS. HT. _____

LONGITUDE _____

GPS (X) _____ TRAVERSE (X) _____

BASED ON THE FOLLOWING CONTROL:

PLACE MONUMENT SYMBOL AT PROPER LOCATION ON ABOVE INDEX

CORNER MONUMENT

WITNESS MONUMENT

(a)

BEARINGS ARE BASED ON:

FIELD BOOK _____ PAGE # _____

SHEET 1 OF 3

SHOW A PLAN VIEW DRAWING DEPICTING THE CORNER MONUMENT AND SURROUNDING PHYSICAL FEATURES, INCLUDING THE EXCAVATION AREA AND DEPTH.

PLANNING & ZONING COMMITTEE ADOPTED THE ABOVE FORM ON 12/2/1982

CORNER CODE N17(1)

NE569

(B) Describe any record evidence, monument evidence, occupational evidence, testimonial evidence or any other material evidence you considered, and whether the monument was found or placed.

1834 MILLER PG 22 EAST RANDOM BETWEEN SEC 15 & 22

1782 ENTER MARSH SOUTH

2244 LEAVE SAME

5315.64 INTERSECT SEC LINE 19.14' NORTH OF POST

LAND 2ND RATE GENTLY ROLLING TIMBER OAK & HICKORY OAK & HAZEL U.G.

WEST CORRECTED BETWEEN SECS 22 & 15

2657.82 SET 1/4 SEC POST. YELLOW OAK 12 S67E 58.08'; YELLOW OAK 18 N12W 63.36'

3175.26 HICKORY 18 IN DIA

5315.64 SEC CORNER

PG 17 NORTH BETWEEN SECS 14 & 15

2005.08 YELLOW OAK 10 IN

2583.9 BUR OAK 22 IN DIAMETER

2640 SET 1/4 SEC POST BUR OAK 10 IN N50E 68.64; BUR OAK 10 IN S29W 27.72

3699.3 WHITE OAK 18 IN

4404.18 YELLOW OAK 10

5082 ENTER PRAIRIE

5280 SET POST COR OF 10,11,14,15

BUR OAK 22 IN N75E 252.12'; BUR OAK 10 IN S27-30W 67.98'

LAND 2ND RATE GENTLY ROLLING 2ND RATE TIMBER OAK & HICKORY OAK & HAZE U.G.

PG 16

NORTH BETWEEN 22 & 23

300.96 BUR OAK 12 IN

627 BROOK 6.6' SW

676.5 SAME BROOK NE

722.7 SAME BROOK S.W.

2640 SET 1/4 SEC POST BUR OAK 8 IN S19E 59.4'; YELLOW OAK 10 N6W 66

2814.9 YELLOW OAK 10 IN

4643.76 BUR OA 18 IN

5256.24 BUR OAK 12 IN

5280 SET POST COR OF SEC 14,15,22,23 BUR OAK 18 S50E 29.04'; BUR OAK 15 N60W 23.76' LAND ROLLING (SLIGHTLY) 2ND RATE TIMBER OAK & HICKORY. OAK & HAZEL UNDERGROWTH

PG 16 EAST RANDOM BETWEEN SEC 14 & 23

5263.5 INTERSECT SEC LINE 3.96' SOUTH OF POST LAND SAME

WEST CORRECTED BETWEEN SECS 14 & 23

174.9 WHITE OAK 15 IN DIA

1339.14 BUR OAK 18

2631.42 SET 1/4 SEC POST BUR OAK 20 IN S19W 35.64'

BUR OAK 20 IN N53E 38.94'

4026 YELLOW OAK 10

5263.5 SEC CORNER

1871 COLLINS REMONUMENTATION NOTES

PG 153

NORTH BETWEEN 22 & 23 VARIATION 4-30

620.4 CREEK

2620.2 INTERSECT 1/4 LINE 5.94' EAST OF CORNER SET 1/4 STONE BY STUMP OF WITNESS TREE. CORRECTED VARIATION 4-22

CONTINUED NORTH VARIATION 5

5249.64 SET STONE FOR CORNER OF 14,15,22,23 BY ROOTS OF WITNESS TREES.

PG 167

EAST BETWEEN 15 & 22 VARIATION 3-15

2698.74 INTERSECT 1/4 LINE 18.48' NORTH OF CORNER SET 1/4 STONE BY STUMP OF WITNESS TREE CORRECTED VARIATION 3-40

CONTINUED EAST VARIATION 3-18

5404.08 SECTION CORNER

- PG 155 NORTH BETWEEN 14 & 15 VARIATION 7-10
- 2648.58 INTEREST 1/4 LINE 11.88' WEST OF CORNER. SET 1/4 STONE BY STUMP AND ROOTS OF WITNESS TREE. CORRECTED VAR 7-25
CONTINUED NORTH VARIATION 6-20
- 5298.48 SET STONE FOR CORNER OF 10,11,14,15 IN PLACE OF OLD STAKE FOUND BY ROOTS OF WITNESS TREES
PG 154 EAST BETWEEN 14 & 23 VARIATION 8
- 2608.98 SET 1/4 STONE BY STUMP OF WITNESS TREE
CONTINUED EAST VARIATION 7-30
- 5217.3 SEC CORNER
- 1965 BATTERMAN VOL 4 PG 168 FD 6X6 CUT STONE. SET 1" PIPE IN MON. BOX OVER STONE. REFERENCED SAME.
- 1973 SHIMEALL CSM VOL 3 PG 171 ANGLE OF 93-33-30 @ NW COR SEC 23 FROM N 1/4 TO W 1/4 CORNERS OF SEC 23
- 1977 BARNES VOL 5 PG 332 FD MON BOX 0.4' DEEP & 1" PIPE. SET ALUM MON INSIDE.
- 1991 BARNES N-17 ROAD PAVING PROJECT. FD ALUM. MON & REFERENCE SAME.
- 1996 COMBS #8347 2644.21 TO W 1/4 COR SEC 14 & 2606.05 TO S 1/4 COR SEC 14
- 1997 LEUENBERGER CSM 20 PG 202 ANGLE OF 88-37-00 @ SW COR SEC 14 FROM W 1/4 TO S 1/4 COR SEC 14. 2606.12 TO S 1/4 COR SEC 14, 2664.28 TO W 1/4 COR SEC 14

FOUND ALUM. MON. WITH TOP BROKE OFF.

C) Was the corner restored through acceptance of (1) an obliterated evidence location, or, (2) a found perpetuated location?

ACCEPTED FOUND MONUMENT.

D) Describe any material discrepancy between the location of the corner as restored or reestablished and the location of that corner as previously restored or reestablished by distance and direction. Show the discrepancy on the plan view drawing under (a), above. Show the distances between the corner as previously restored or reestablished and (1) the corner as restored or reestablished, and (2) to at least 4 of the witness monuments shown on the drawing in (a), above.

(E) Was the corner reestablished through lost corner proportionate methods? If so, show the method, including the directions and distances to other public land survey corners used as evidence or used for proportioning the corner location.

I, Donald Barnes, hereby certify that the corner location as identified by the corner code index was determined by me under my direction and control and that this U.S. Public Land Survey Monument Record is correct and complete to the best of my knowledge and belief.

seal



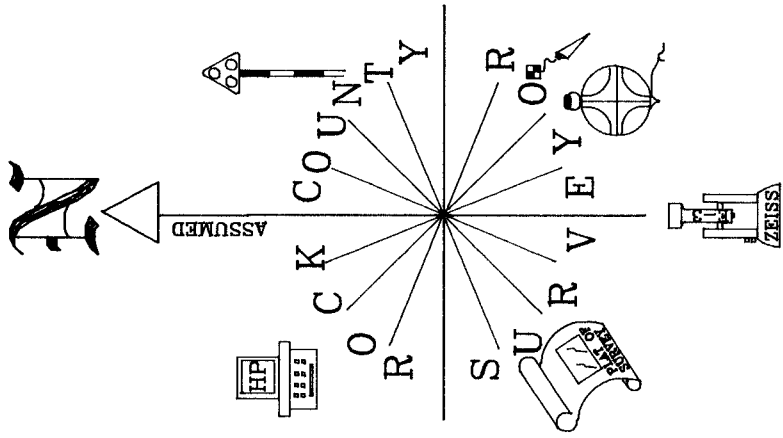
emboss

Dec 18 2000

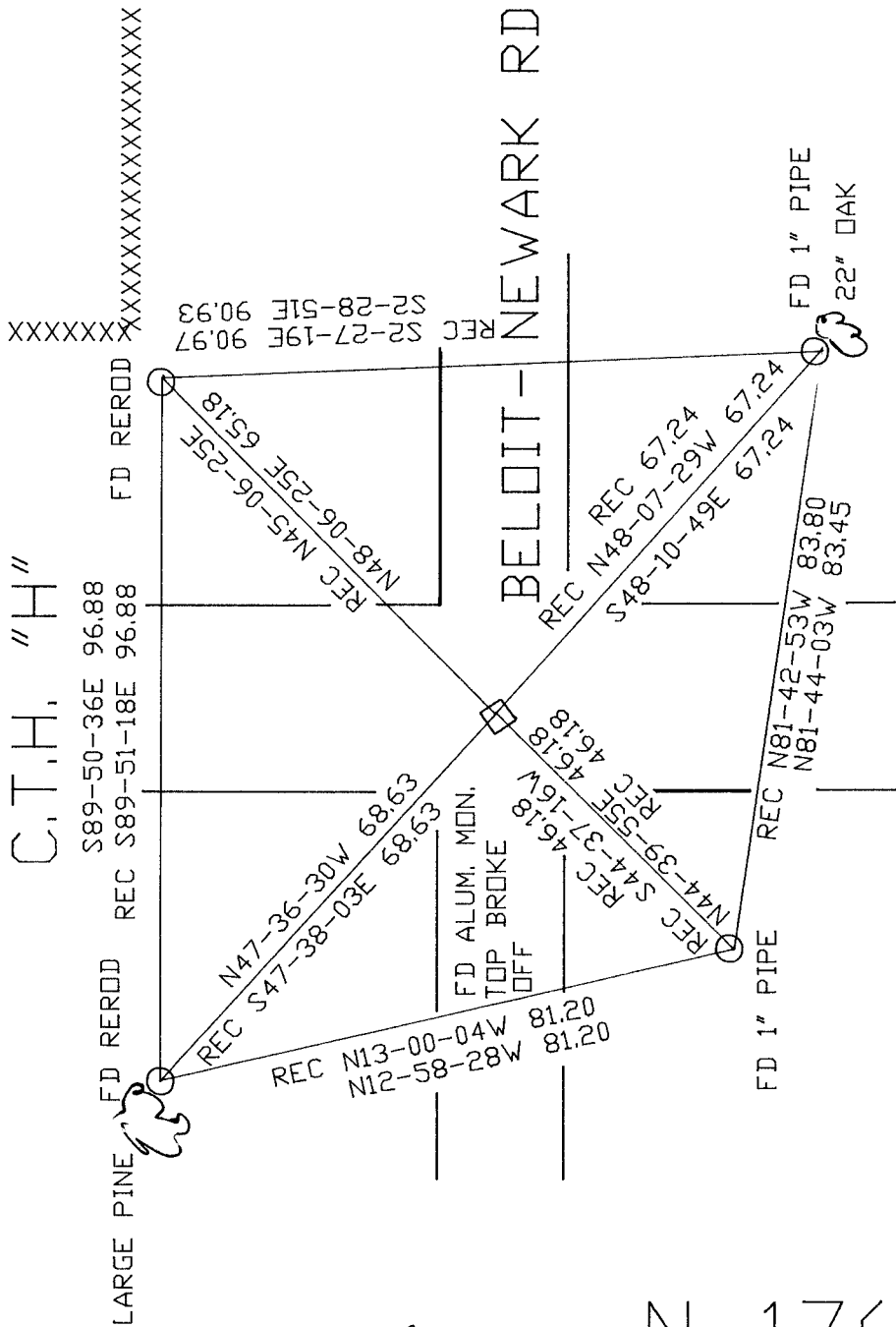
SHEET 2 OF 3

CORNER CODE **N-17(1)**

A-E 7.08 REQUIREMENT



OBSERVATION SHEET 569



EMBOSSSED
Donald Barnes
 Dec 18 2000

N-17(1)