

Paper weight _____ (minimum)

Black not _____ required

U.S. PUBLIC LAND SURVEY MONUMENT RECORD

For Public Land Survey Corners in:

WI ADMINISTRATIVE CODE A-E 7.08 REQUIREMENT

T. 1 N., R. 11 E

CORNER CODE INDEX

A	1	2	3	4	5	6	7	8	9	10	11	12	13	14	15	16	17	18	19	20	21	22	23	24	25
B	6																								
C																									
D																									
E																									
F																									
G	7																								
H																									
I																									
J																									
K																									
L	18																								
M																									
N																									
O																									
P	19																								
Q																									
R																									
S	30																								
T																									
U	29																								
V																									
W																									
X	31																								
Y																									
Z																									

NEWARK TWP
ROCK COUNTY WI

IF AVAILABLE
ROCK COUNTY COORDINATES PREFERRED

North _____ Elev. _____

East _____

Hor. Datum _____ Vert. Datum _____

LATITUDE _____ ELLIPS. HT. _____

LONGITUDE _____

GPS (X) _____ TRAVERSE (X) _____

BASED ON THE FOLLOWING CONTROL:

PLACE MONUMENT SYMBOL AT PROPER LOCATION ON ABOVE INDEX

CORNER MONUMENT

WITNESS MONUMENT

(a)

BEARINGS ARE BASED ON:

FIELD BOOK _____ PAGE # _____

SHEET 1 OF 2

SHOW A PLAN VIEW DRAWING DEPICTING THE CORNER MONUMENT AND SURROUNDING PHYSICAL FEATURES, INCLUDING THE EXCAVATION AREA AND DEPTH.

PLANNING & ZONING COMMITTEE ADOPTED THE ABOVE FORM ON 12/2/1982

CORNER CODE G-17(1)

NE538

(B) Describe any record evidence, monument evidence, occupational evidence, testimonial evidence or any other material evidence you considered, and whether the monument was found or placed.

1834 MILLER

PG 18 NORTH BETWEEN SECS 10 & 11

2640 SET 1/4 SEC POST YELLOW OAK 18 S57-30E 124.74; ASPEN 10 N70-30E 184.8'

3676.2 TRAIL N.W.

5280 SET POST COR OF SECS 2,3,10,11 BUR OAK 10 S11E 175.56'; BUR OAK 10 N6W 132'

1871 COLLINS REMONUMENTATION

NORTH BETWEEN 10 & 11 VARIATION 5-50

2666.4 INTERSECT 1/4 LINE 4.62' EAST OF CORNER. SET 1/4 STONE IN PLACE OF OLD STAKE FOUND BY STUMP OF WITNESS TREE. VARIATION CORRECTED 5-44

CONTINUED NORTH VARIATION 5-20

5334.78 SET STONE FOR CORNER OF 2,3,10,11 BY ROOTS OF WITNESS TREES.

1882 HOLMES VOL 2 PG 347 CALLS FOR MON. BUT STATES NOTHING ABOUT IT. VAR 4-45 2663.43 TO NW COR SEC 11.

1968 BATTERMAN VOL 4 PG 361 FD CUT STONE 6" DEEP REFERENCED SAME. 6.5' EAST OF WEST EDGE PVMT.

1970 SHIMEALL CSM 1 PG 296 1333.0 TO THE W 1/16TH COR OF THE SW 1/4 OF SEC 11.

1991 BARNES G-17 FD PK DID NOT ACCEPT NOR REJECT. REFERENCED BECAUSE OF PAVING PROJECT.

FD REFERENCE MONUMENTS AND SET STEEL SURVEY SPIKE.

C) Was the corner restored through acceptance of (1) an obliterated evidence location, or, (2) a found perpetuated location?

ACCEPTED FOUND PERPETUATED LOCATION.

D) Describe any material discrepancy between the location of the corner as restored or reestablished and the location of that corner as previously restored or reestablished by distance and direction. Show the discrepancy on the plan view drawing under (a), above. Show the distances between the corner as previously restored or reestablished and (1) the corner as restored or reestablished, and (2) to at least 4 of the witness monuments shown on the drawing in (a), above.

(E) Was the corner reestablished through lost corner proportionate methods? If so, show the method, including the directions and distances to other public land survey corners used as evidence or used for proportioning the corner locatio

I, Donald Barnes, hereby certify that the corner location as identified by the corner code index was determined by me under my direction and control and that this US Public Land Survey Monument Record is correct and complete to the best of my knowledge and belief.

seal

Donald
Barnes
suboss

Number of included sheets 1

6-22-01

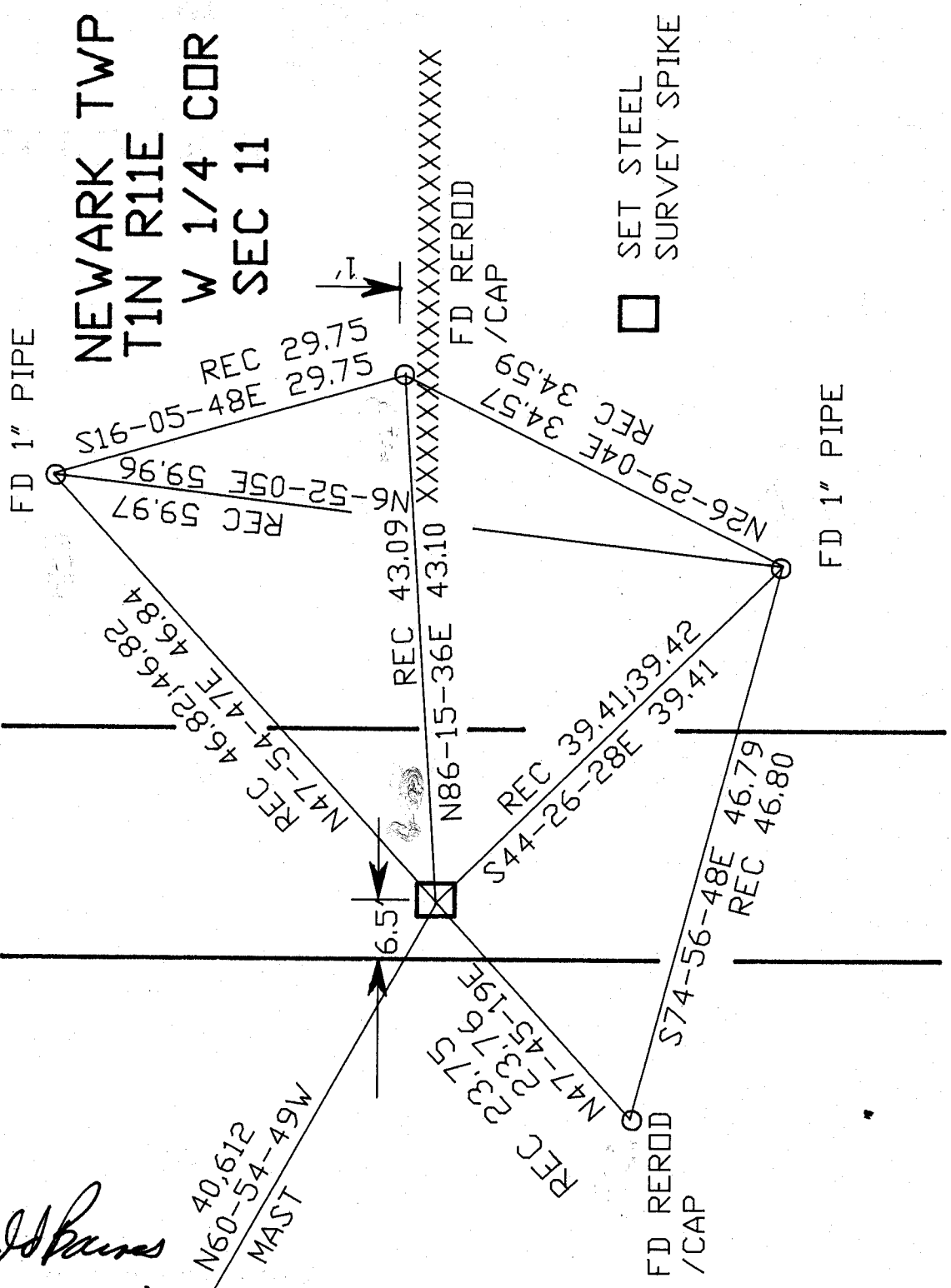
CORNER CODE G-17(1)

A-E 7.08 REQUIREMENT

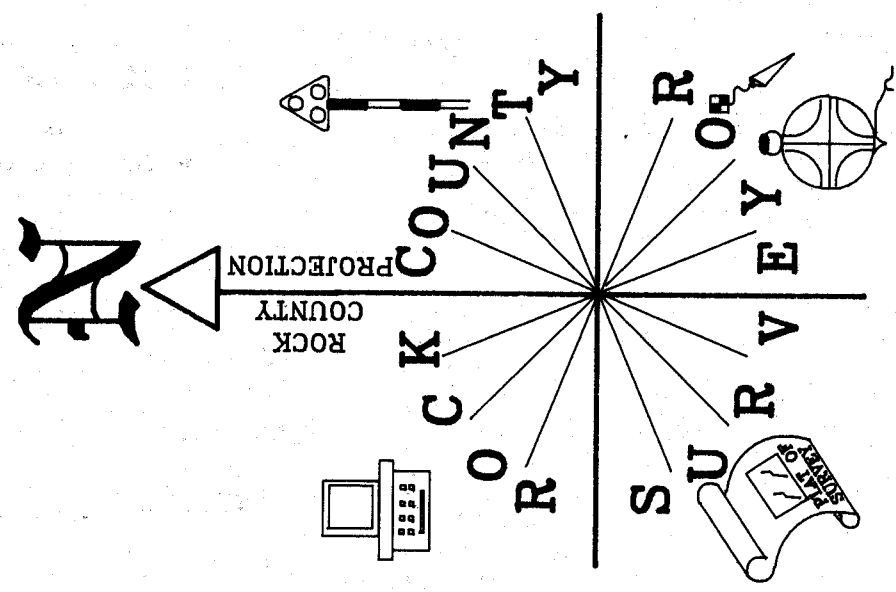
Randall
6-22-01

N60-54-49W
MAST
40,612

CTH "H"



SET STEEL SURVEY SPIKE



OBSERVATION SHEET
#392

G-17(1)

EMBOSSED SEAL