

# U.S. PUBLIC LAND SURVEY MONUMENT RECORD

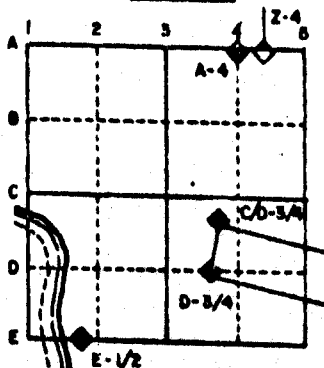
For Public Land Survey Corners in the  
T. 2 N., R. 10 E.

## CORNER CODE INDEX

	1	2	3	4	5	6	7	8	9	10	11	12	13	14	15	16	17	18	19	20	21	22	23	24	25
A																									
B																									
C	6																								
D		5																							
E			4																						
F				3																					
G					2																				
H																									
I																									
J	7																								
K		8																							
L			9																						
M				10																					
N					11																				
O						12																			
P							13																		
Q								14																	
R									15																
S										16															
T											17														
U												18													
V													19												
W														20											
X															21										
Y																22									
Z																	23								
																		24							
																			25						
																				26					
																					27				
																						28			
																							29		
																								30	
																									31
																									32
																									33
																									34
																									35
																									36

PLACE MONUMENT SYMBOL (◆) AT PROPER LOCATION ON ABOVE INDEX

### EXAMPLE



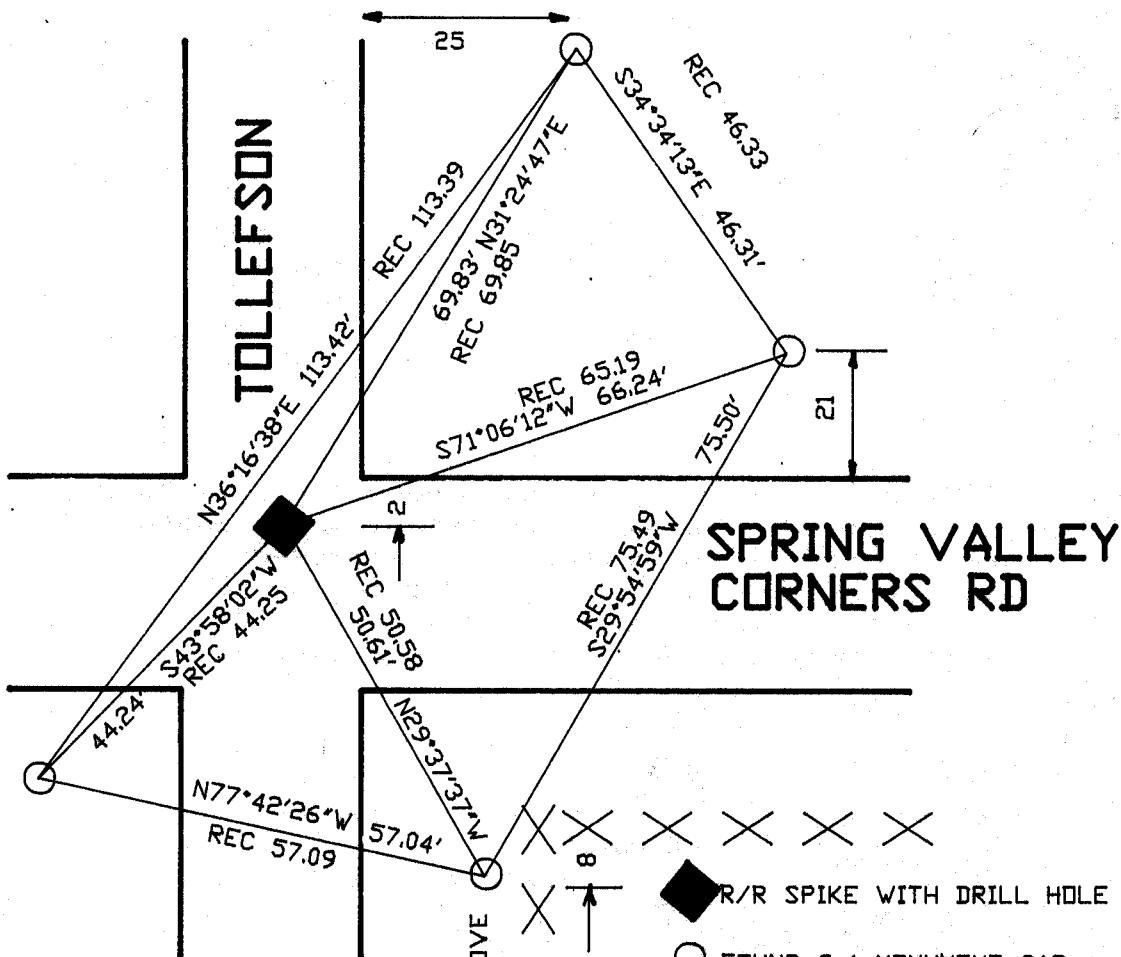
SPRING VALLEY TWP  
ROCK COUNTY WI

IF AVAILABLE  
STATE PLANE COORDINATES

North (Y) 240,858.32 Elev. (Z) \_\_\_\_\_  
 East (X) 2,196,710.14 Zone \_\_\_\_\_  
 Hor. Datum \_\_\_\_\_ Vert. Datum \_\_\_\_\_

◆ CORNER MONUMENT      ○ WITNESS MONUMENT

BEARINGS ARE BASED ON STATE PLANE



FOUND G-1 MON 3' ABOVE GROUND. DROVE TO GROUND LEVEL.

◆ R/R SPIKE WITH DRILL HOLE  
 ○ FOUND G-1 MONUMENT CAP  
 FIELD BOOK # 3, PAGE 7,18

# MICROFILMED

SHEET \_\_\_ OF \_\_\_

CORNER CODE: E 21

(B) Describe any record evidence, monument evidence, occupational evidence, testimonial evidence or any other material evidence you considered, and whether the monument was found or placed.

- 1867 LOCKE VOL 1 PG 285 FOUND STUMP OF E.B.T. & OLD STAKE. SET STAKE WITH LARGE HARDHEADS ON SOUTH AND SMALLER HARDHEAD ON N. AND LIMESTONE ON E & W. SHOWS A DISTANCE OF 2690.29 TO NORTH QUARTER CORNER OF SECTION 12.
- 1868 LOCKE VOL 1 PG 322 STATES NOTHING ABOUT CORNER BUT SHOWS A DISTANCE OF 2623.50 TO THE WEST QUARTER CORNER OF SECTION 1.
- 1869 LEE VOL 1 PG 344 STATES NOTHING ABOUT CORNER. SHOWS A DISTANCE OF 2622.84 TO WEST QUARTER CORNER OF SECTION 1.
- 1887 RUGER VOL 2 PG 419 FOUND OLD STAKE SET BY LOCKE, ALSO LARGE HH BY IT. IT AGREES WITH OLD B.T. STUMP., LEFT BOTTOM OF OLD STAKE IN GROUND AND SET OVER IT LIMESTONE 17 1/2 X 8 x 2 1/2" AND SURROUNDED IT BY 4 LARGE H.H.
- 1975 BARNES VOL 5 PG 193 DUG AND FOUND 18 INCHES DEEP A BROKEN LIMESTONE 17 1/2" x 8 x 2 1/2" SURROUNDED BY 4 VERY LARGE HH. PLACED FOUR REFERENCE TIES.

PLACED R/R SPIKE WITH DRILL HOLE FROM TIES.

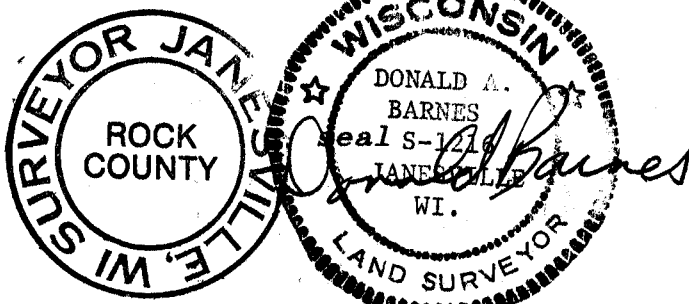
C) Was the corner restored through acceptance of (1) an obliterated evidence location, or, (2) a found perpetuated location?

ACCEPTED FOUND PERPETUATED LOCATION.

D) Describe any material discrepancy between the location of the corner as restored or reestablished and the location of that corner as previously restored or reestablished by distance and direction. Show the discrepancy on the plan view drawing under (a), above. Show the distances between the corner as previously restored or reestablished and (1) the corner as restored or reestablished, and (2) to at least 4 of the witness monuments shown on the drawing in (a), above.

(E) Was the corner reestablished through lost corner proportionate methods? If so, show the method, including the directions and distances to other public land survey corners used as evidence or used for proportioning the corner location.

I, Donald Barnes, hereby certify that the corner points as identified by the corner code index were, in a field survey on, November 1, 1989, established, re-established, monumented, re-monumented, recovered or restored as expressed below and in conformance with the regulations and rules as required in the current manual of survey instructions of the United States Department of Interior, Bureau of Land Management.



AFFIX YOUR LAND SURVEYOR SEAL

COUNTY SURVEYOR FILING DATA

Date of computer entry \_\_\_\_\_

Date microfilmed \_\_\_\_\_

Number of included sheets \_\_\_\_\_  
CORNER CODE