

# U.S. PUBLIC LAND SURVEY MONUMENT RECORD

For Public Land Survey Corners in:

WI ADMINISTRATIVE CODE A-E 7.08 REQUIREMENT

T. 2N., R. 10E

### CORNER CODE INDEX

A	1	2	3	4	5	6	7	8	9	10	11	12	13	14	15	16	17	18	19	20	21	22	23	24	25
B																									
C	6																								
D																									
E																									
F	1																								
G																									
H																									
J																									
K	18																								
L																									
M																									
N																									
O																									
P	19																								
Q																									
R																									
S																									
T	30																								
U																									
V																									
W																									
X	31																								
Y																									
Z																									

SPRING VALLEY TWP  
ROCK COUNTY WI

IF AVAILABLE  
ROCK COUNTY COORDINATES PREFERRED

North \_\_\_\_\_ Elev. \_\_\_\_\_

East \_\_\_\_\_

Hor. Datum \_\_\_\_\_ Vert. Datum \_\_\_\_\_

LATITUDE \_\_\_\_\_ ELLIPS. HT. \_\_\_\_\_

LONGITUDE \_\_\_\_\_

GPS (X) \_\_\_\_\_ TRAVERSE (X) \_\_\_\_\_

BASED ON THE FOLLOWING CONTROL:

PLACE MONUMENT SYMBOL  AT PROPER LOCATION ON ABOVE INDEX

CORNER MONUMENT

WITNESS MONUMENT

(a)

BEARINGS ARE BASED ON:

FIELD BOOK \_\_\_\_\_ PAGE # \_\_\_\_\_

SHEET 1 OF 2

SHOW A PLAN VIEW DRAWING DEPICTING THE CORNER MONUMENT AND SURROUNDING PHYSICAL FEATURES, INCLUDING THE EXCAVATION AREA AND DEPTH.

PLANNING & ZONING COMMITTEE ADOPTED THE ABOVE FORM ON 12/2/1982

CORNER CODE V 21

SP611

(B) Describe any record evidence, monument evidence, occupational evidence, testimonial evidence or any other material evidence you considered, and whether the monument was found or placed.

- 1834 MILLER NORTH BETWEEN SEC 35 & 26
  - 462' ENTER MARSH S.E.
  - 792' BROOK 3.3' S.E.
  - 2640 SET 1/4 SEC COR POST BUR OAK 6 N10E 297'
  - BUR OAK 13 N41E 239.84'
  - 4125 LEAVE MARSH
  - 5280 SET POST COR SEC 24 & 26, 35, 36 BUR OAK 16 IN S28E 31.68'
  - BUR OAK 18 N32W 86.46'
- 1834 MILLER NORTH BETWEEN 25 & 26
  - 943.14' BUR OAK 14" DIA.
  - 1943.7' BUR OAK 16" IN DIA.
  - 2593.8' TRAIL S.E.
  - 2640' SET 1/4 SEC POST
  - YELLOW OAK 6 S27W 23.72'
  - YELLOW OAK 8 N10E 86.46'
  - 5280 SET POST COR OF SEC 23, 24, 26, & 25
  - WHITE OAK 30 S51E 69.96'
  - WHITE OAK 36 N49W 27.72'
- 1834 MILLER EAST RANDOM BETWEEN SEC 26 & 35
  - 3366' ENTER MARSH @ S.W.
  - 4488' LEAVE SAME
  - 5227.2' INTERSECTED SEC. LINE 9.9' SOUTH POST
  - WEST CORRECTED BETWEEN SEC 26 & 35
  - 2023.56' BUR OAK 12 DIA
  - 2613.6 SET 1/4 SEC POST
  - BUR OAK 5IN S20W 21.12'; BUR OAK 6IN S72E 35.64'
  - 3639.9' BUR OAK 15" DIA
  - 4215.42 BUR OAK 12 IN DIA
  - 5227.20' SEC COR.
- 1834 MILLER EAST RANDOM BETWEEN SEC 25 - 36
  - 1848' ENTER MARSH S.W.
  - 2858.46' TRAIL N.W.
  - 3960' ENTER TIMBER
  - 5300.46 INTERSECTED RANGE LINE
  - WEST CORRECTED BETWEEN SEC 25 30
  - 4649.9' SET 1/4 SEC POST IN MARSH; BUR OAK 18 S30E 488.4'
  - 5300.46 SEC COR
- 1851 McVEAN VOL 1 PG 7 2655.18 TO E 1/4 COR SEC 35.
- 1854 McVEAN VOL 1 PG 21 2640 TO S 1/4 COR SEC 25 & 2649.24 TO W 1/4 COR SEC 25.

DUG & FOUND CMP CROSSING IN NORTH WESTERLY DIRECTION.

C) Was the corner restored through acceptance of (1) an obliterated evidence location, or, (2) a found perpetuated location?  
CORNER RESTORED THROUGH ACCEPTANCE OF OBLITERATED EVIDENCE LOCATION. ESTABLISHED CORNER BY PRORATING McVEAN'S DISTANCE TO THE E 1/4 COR SEC 35 AND E 1/4 COR SEC 26 AND THE ORIGINAL GOVERNMENT SURVEY DISTANCE FROM THE N 1/4 COR SEC 35 AND THE N 1/4 COR SEC 36.

I, Donald Barnes, hereby certify that the corner location as identified by the corner code index was determined by me under by direction and control and that this U.S. Public Land Survey Monument Record is correct and complete to the best of my knowledge and belief.

seal

*Donald Barnes*

emboss

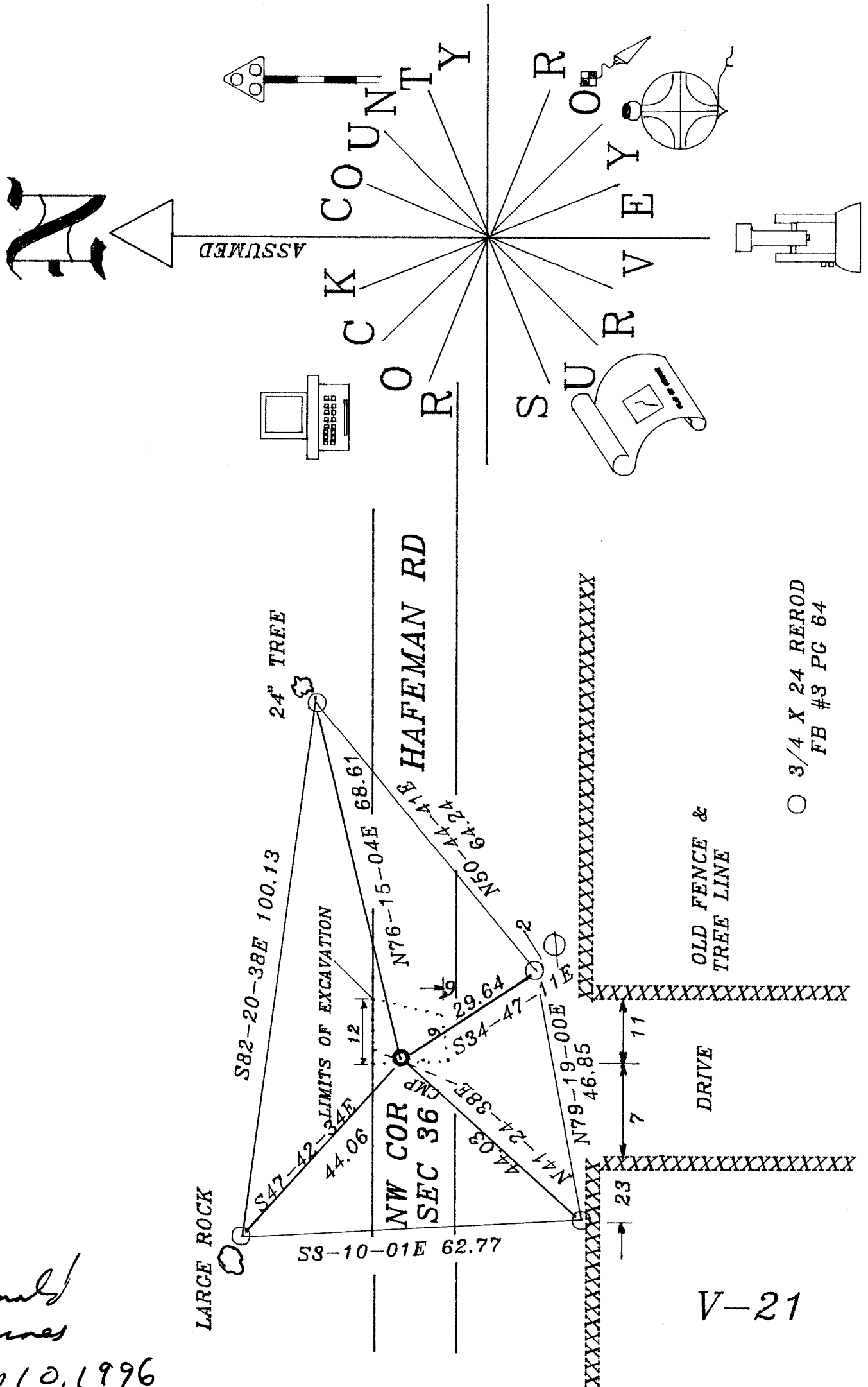
*Sept 10, 1996*

A-E 7.08 REQUIREMENT

Number of included sheets \_\_\_\_\_

CORNER CODE

Donald Barnes  
 Sep 10, 1996



○ 3/4 X 24 REROD  
 FB #3 PG 64