

U.S. PUBLIC LAND SURVEY MONUMENT RECORD

For Public Land Survey Corners in:

WI ADMINISTRATIVE CODE A-E 7.08 REQUIREMENT

T. 2 N., R. 10 E

CORNER CODE INDEX

A	1	2	3	4	5	6	7	8	9	10	11	12	13	14	15	16	17	18	19	20	21	22	23	24	25
B	6					5					A				3						2				1
C																									
D																									
E																									
F																									
G	7					8				9					10						11				12
H																									
J																									
K																									
L	18					17				16					15						14				13
M																									
N																									
O																									
P	19					20				21					22						23				24
Q																									
R																									
S																									
T	30					29				28					27						26				25
U																									
V																									
W																									
X	31					32				33					34						35				36
Y																									
Z																									

SPRING VALLEY TWP

ROCK COUNTY WI

IF AVAILABLE
ROCK COUNTY COORDINATES PREFERRED

North _____ Elev. _____

East _____

Hor. Datum _____ Vert. Datum _____

LATITUDE _____ ELLIPS. HT. _____

LONGITUDE _____

GPS (X) _____ TRAVERSE (X) _____

BASED ON THE FOLLOWING CONTROL:

PLACE MONUMENT SYMBOL **◆** AT PROPER LOCATION ON ABOVE INDEX

◆ CORNER MONUMENT

○ WITNESS MONUMENT

(a)

BEARINGS ARE BASED ON: _____

FIELD BOOK _____ PAGE # _____

SHEET 1 OF 3

SHOW A PLAN VIEW DRAWING DEPICTING THE CORNER MONUMENT AND SURROUNDING PHYSICAL FEATURES, INCLUDING THE EXCAVATION AREA AND DEPTH.

PLANNING & ZONING COMMITTEE ADOPTED THE ABOVE FORM ON 12/2/1982

CORNER CODE A-21

(B) Describe any record evidence, monument evidence, occupational evidence, testimonial evidence or any other material evidence you considered, and whether the monument was found or placed.

- 1833 MULLETT VAR 7-40E
WEST ON SOUTH SIDE SEC 36
2640 SET QUARTER SEC POST
BUR OAK 9 N29W 70.62'
RUB OAK 6 N42E 163.02'
2970 ENTER PRAIRIE
5280 SET POST CORNER SECTIONS 35 & 36
IN PRAIRIE AND MADE A MOUND
ON EAST SIDE SEC 35
2640 SET QUARTER SEC POST IN PRAIRIE & MADE A MOUND
5280 SET POST CORNER SECTS 34 & 35 IN PRAIRIE & MADE A MOUND.
- 1833 HARRISON NORTH BETWEEN SEC 35 & 36
990 LEAVE PRAIRIE
1987.92 BROOK 3 CRS E
2277 RED OAK
2640 QUARTER SEC COR.
HICKY 8 S87E 9.9'
WHITE OAK 20 S67W 52.8'
3109.92 RED OAK 12 IN DIA
5280 COR TO SECS 25 26 35 36
BUR OAK 12 N46E 172.26'
BUR OAK 12 S68E 116.16'
BUR OAK 12 N45W 310.2'
RED OAK 10 S88W 283.14'
- 1868 LOCKE VOL 1 VOL 322 STATES NOTHING ABOUT CORNER. CALLS FOR
2616.90 TO N 1/4 COR SEC 1 & 2302.74 TO W 1/4 COR SEC 1.
- 1874 RUGER VOL 2 PG 130 FOUND COR SET BY LOCKE. 1120.52 SOUTH TO
PROPERTY COR. , 2232.78 TO W 1/4 COR W 1/4 COR SEC 1, & 2610.92 TO
N 1/4 COR SEC 1.
- 1880 LEE VOL 2 PG 313 FOUND COR SET BY LOCKE. 1729.53 SOUTH TO
PROPERTY COR & 2306.04 TO W 1/4 COR SEC 1.
- 1881 LEE VOL 2 PG 335 FOUND STAKE & STONES SET BY LOCKE CALLS FOR
495.88 NORTH TO PROPERTY COR. , 2632.74 TO S 1/4 COR SEC 35 &
2644.62 TO E 1/4 COR SEC 35.
- 1988 BARNES VOL 6 PG CALLS FOR LEE'S SURVEY 1881 & DISTANCE 2632.74 TO
S 1/4 COR SEC 35 AND 2644.62 TO E 1/4 COR SEC 35.
- 1989 BARNES Z-21(1) LIMITS OF 3' DEEP HOLE. FOUND OLD REMAINS OF
EXCAVATION OF SOUTH SIDE OF HOLE. 2645.3 FROM CENTER OF HOLE TO W
1/4 COR SEC 36 & 5281.2 FROM CENTER TO NE COR SEC 1.

ESTABLISHED CORNER AT INTERSECTION OF PAVEMENT. THIS IS IN HARMONY WITH RECORD DISTANCES AND OCCUPATION AS SHOWN IN SECTION DIAGRAM.

C) Was the corner restored through acceptance of (1) an obliterated evidence location, or, (2) a found perpetuated location?

RESTORED CORNER THROUGH ACCEPTANCE OF OBLITERATED EVIDENCE LOCATION.

D) Describe any material discrepancy between the location of the corner as restored or reestablished and the location of that corner as previously restored or reestablished by distance and direction. Show the discrepancy on the plan view drawing under (a), above. Show the distances between the corner as previously restored or reestablished and (1) the corner as restored or reestablished, and (2) to at least 4 of the witness monuments shown on the drawing in (a), above.

(E) Was the corner reestablished through lost corner proportionate methods? If so, show the method, including the directions and distances to other public land survey corners used as evidence or used for proportioning the corner location.

I, Donald Barnes, hereby certify that the corner location as identified by the corner code index was determined by me under my direction and control and that this U.S. Public Land Survey Monument Record is correct and complete to the best of my knowledge and belief.

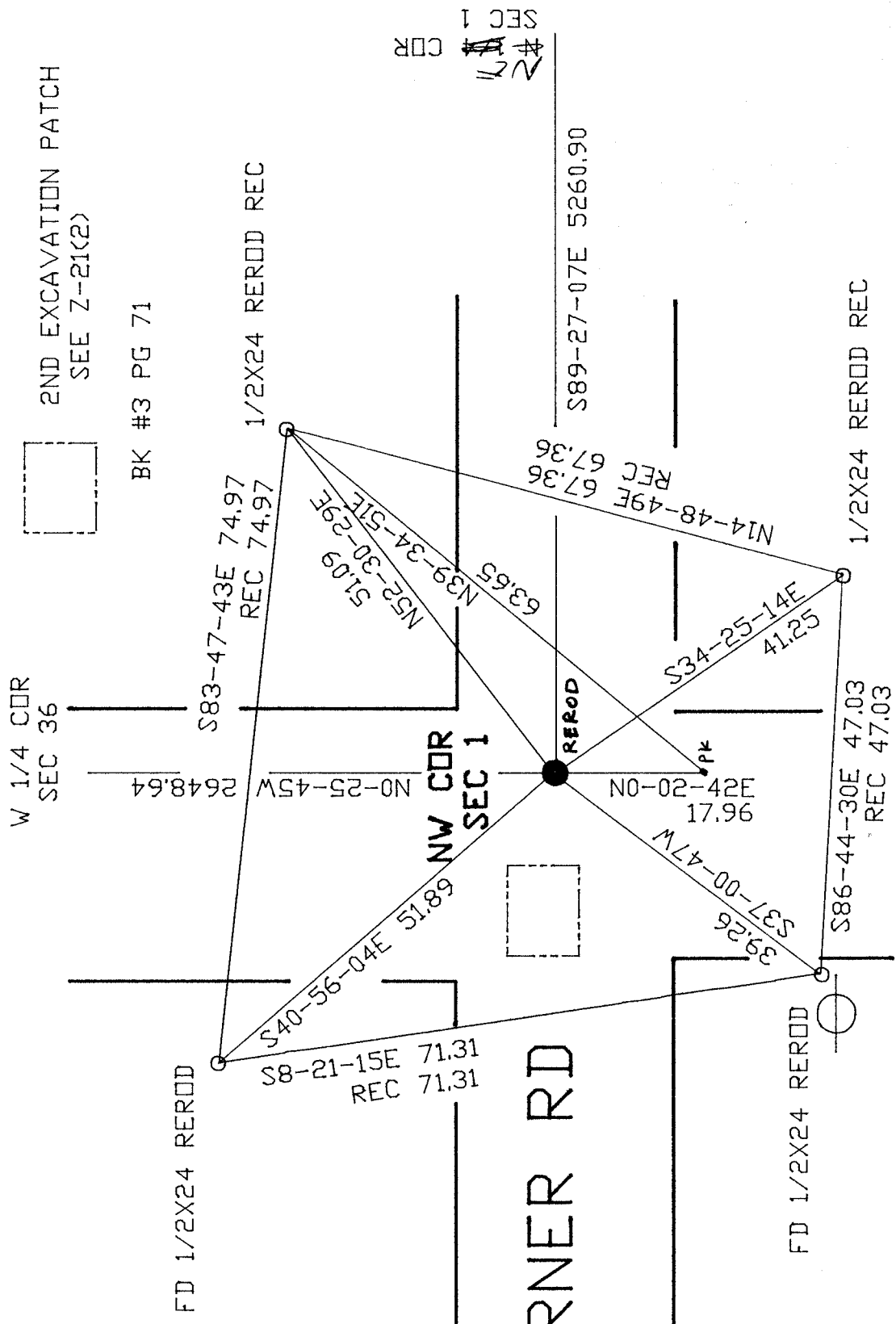
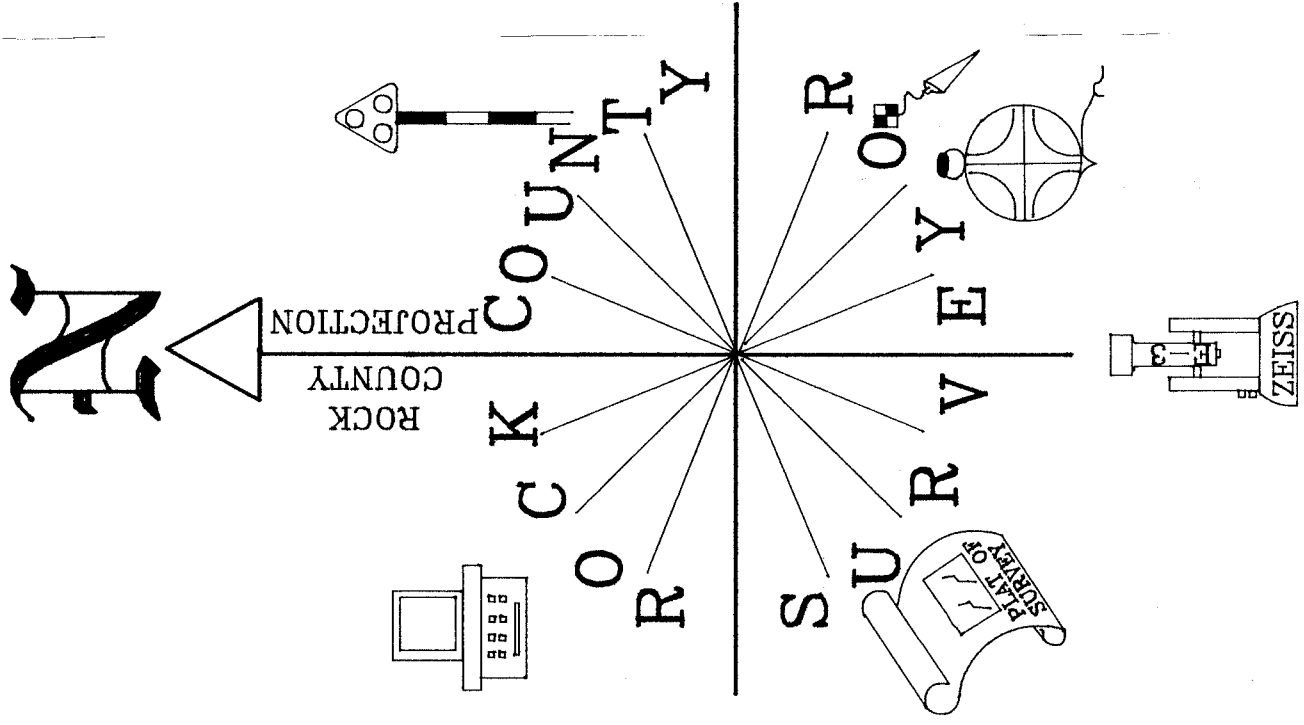
seal
Donald Barnes
emboss
April 26, 1998

Number of included sheets A-24

CORNER CODE

A-E 7.08 REQUIREMENT

Ronald Barnes
 EMBOSSED SEAL
 April 21, 1998



S89-16-10E 2631.46
1833 ORIG 2610.3
1870 RUGER 2620.2
1310.10 RUGER 655.05 655.05

S89-15-55E 2630.32
1833 ORIG 2610.3
1870 RUGER 2625.8
656.45 656.45 RUGER 1312.90

LOCKE 28.38
NO-20-57W 28.45
28.38'

IR

NW CO.

MAGNOLIA TWP

SEC 35

SEC 36

SEC 36

CENTER TWP
T3N R11E

SET 3/4" REROD
NW COR

NE COR

1833 ORIG 2600.4

SEC 2
N1-13-02E 2303.10
1834 ORIG 2364.78
1874 RUGER 2232.78 VAR 5-15
1112.26 RUGER 1120.52
1880 LEE 2306.04
1868 LOCKE 2302.74 VAR 6-10
LEE 576.51
569.86 FENCE
XXX

1874 RUGER 2610.96 VAR 6-45
1868 LOCKE 2616.90
S89-35-19E 2616.90
RUGER 5250.64
5260.91
1874 RUGER 2629.44
XXXX

SET TIES

SEC 1

SEC 1

4926.98
LOCKE 4925.58
LEE 4928.88
S1-32-53W 2623.88
1869 LEE 2622.84
655.71 1311.42
1868 LOCKE 2623.50 VAR 5-55
1834 ORIG 2640
FENCE 1313.9
FENCE 1309.6

1869 LEE 2653.2 VAR 3
1326.60 331.65 331.65 331.65 331.65
1880 LEE 2645.28 VAR 3
1874 RUGER 2647.92
1868 LOCKE 2634.06 VAR 3
S85-44-15E 2651.45

5347.68
RUGER 5338.74
1868 LOCKE VAR 3

1345.41 RUGER 1345.41
1877 RUGER 2690.82
S85-44-15E 2696.22

1869 LEE 2673.0
1336.5 334.13 334.13 334.13 334.13

SPRING VALLEY

N89-49-22E 1337.27

S 1/4 COR 1301.6 FENCE 1396.6

SW COR
S0-05-45W 2665.20
1867 LOCKE 2655.84
1867 LOCKE 2690.68 VAR 3-24
1345.34 LOCKE 1345.34
1989 BARNES 2698.22
S86-08-09E 2698.29

SEC 12

SEC 12

1887 RUGER 2663.32
1986 BARNES INT. 2649.44

1834 ORIG 2655.84
1867 LOCKE 2690.29 VAR 6-24
1870 RUGER 2697.75
1989 BARNES 2698.22
S86-08-19E 2698.19

SE COR

NO-09-16W 2630.45
1867 LOCKE 2657.82

PLYMOUTH TWP
T2N R11E

SOME DISTANCES & BEARINGS
ARE BASED ON OLD OBSERVATIONS

1867 LOCKE 2731.08



A-21

Donald Barnes
EMBOSSED SEAL

April 21, 1998